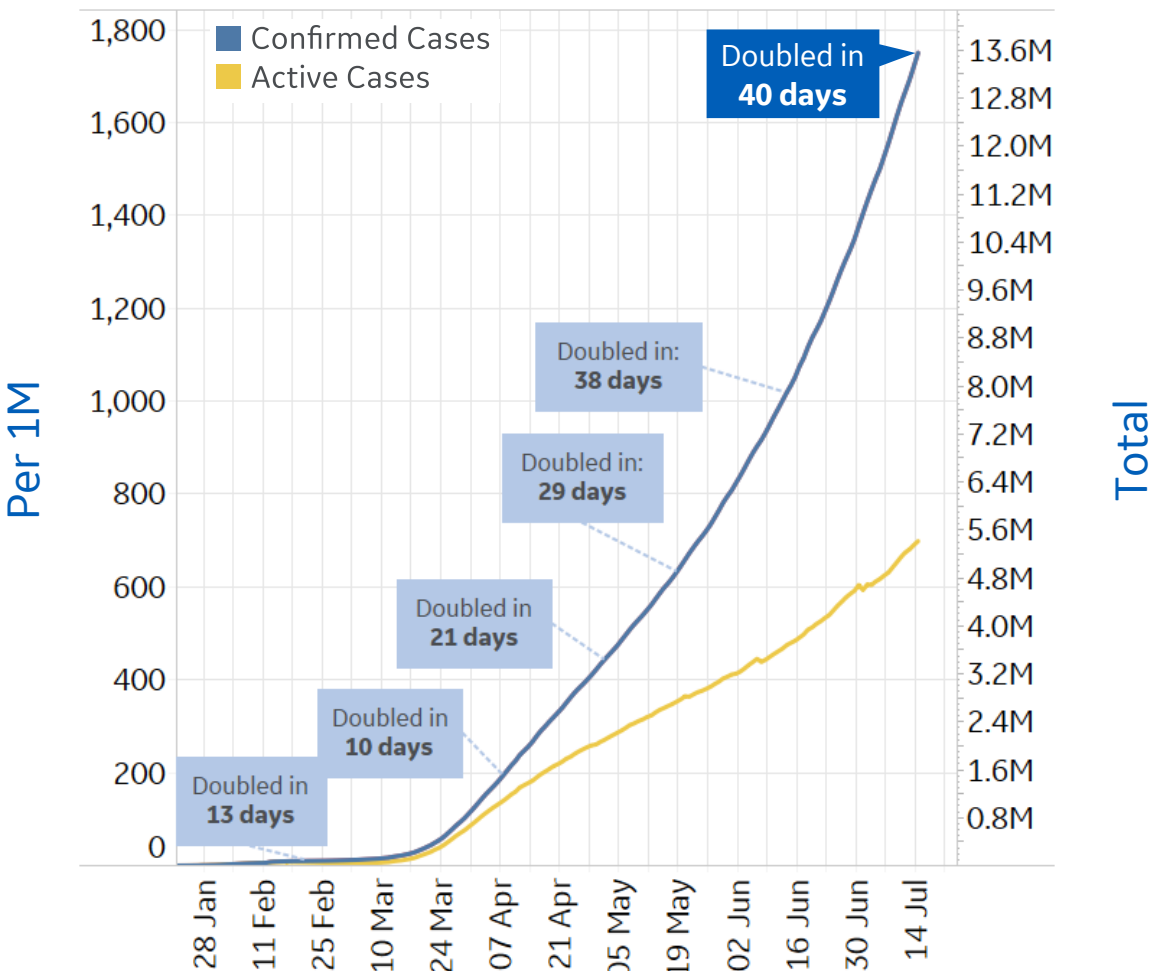




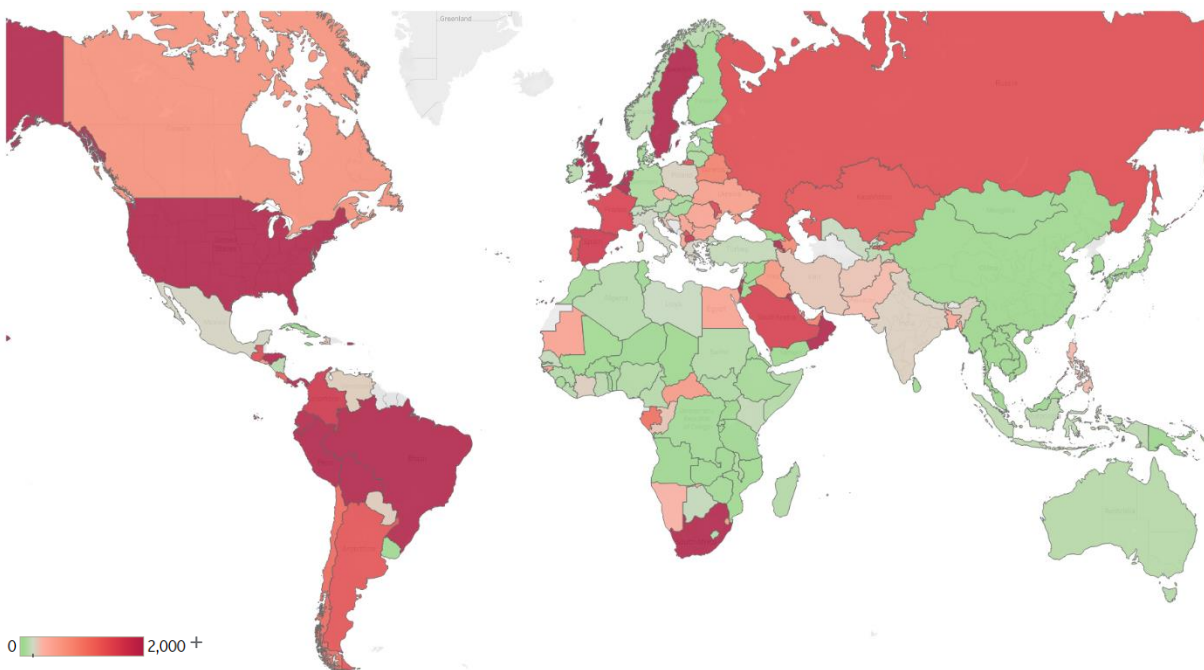
# Global Confirmed & Active Cases

Trend since 22 Jan



Today per 1M

Active cases = Confirmed - Recovered - Deaths



Per 1M:	Today		Change
Active Today	699		+1%
Active	9	new	+1%
Confirmed	30	new	+2%
Deaths	1	new	+1%
Recovered	21	new	+2%



# New Confirmed Cases & New Deaths

Key

North America

Europe

Middle East

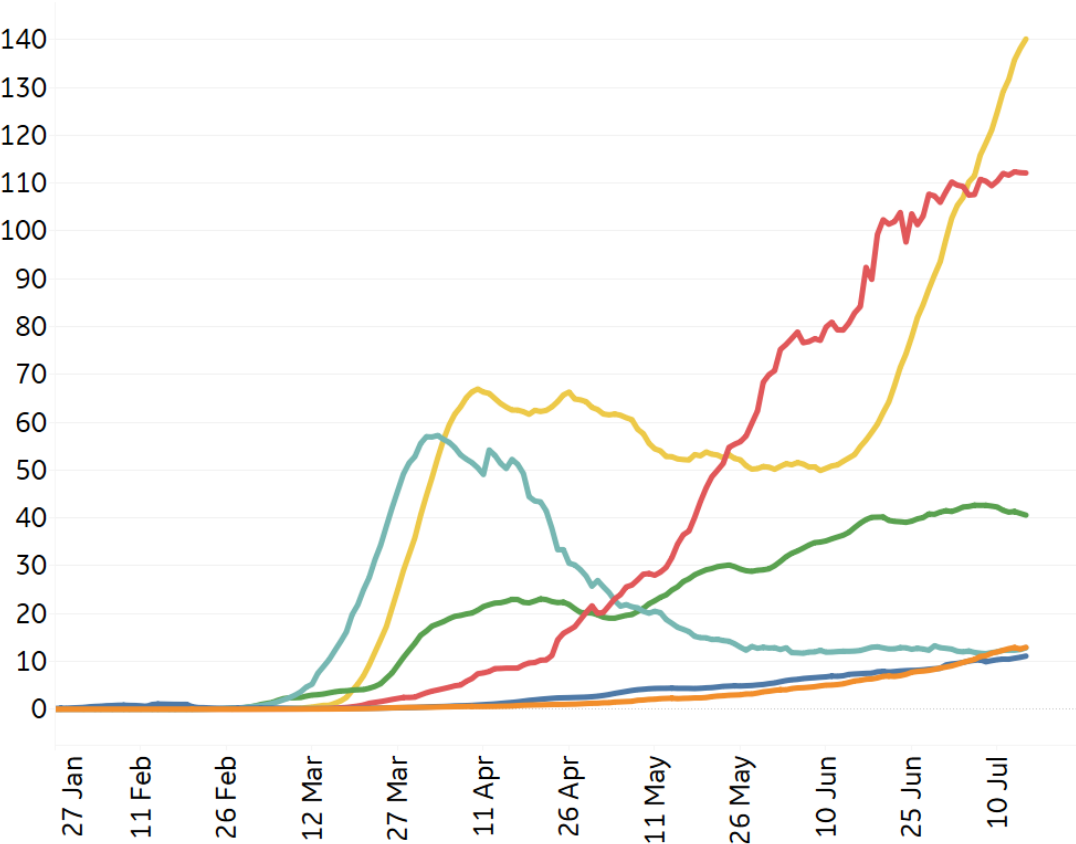
Central/South America

Asia

Africa

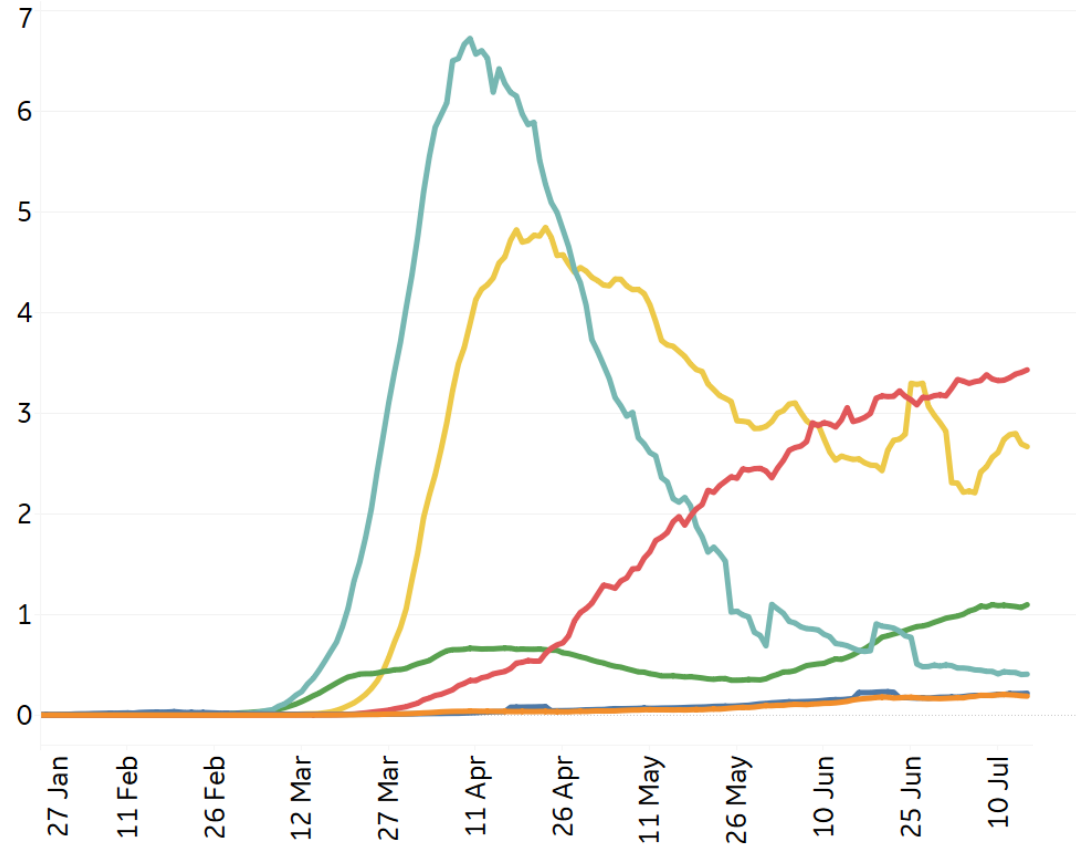
New Confirmed Cases / 1M

7-day rolling average



New Deaths / 1M

7-day rolling average





# Top 50 Countries: Per 1M



## 1 - 25

	Active Today	Today			Total since 22 Jan		
		Confirmed	Deaths	Recovered	Total Confirmed	Total Deaths	Total Recovered
Belgium	3,093	8	0	2	5,425	845	1,488
UK	3,638	8	1	0	4,323	665	20
Spain	1,683	19	0	0	5,507	608	3,216
Sweden	7,022	49	3	0	7,574	552	0
France	1,555	14	1	3	3,226	461	1,209
US	6,902	200	3	81	10,567	415	3,250
Peru	3,001	118	6	95	10,244	377	6,866
Chile	1,147	90	6	149	16,803	376	15,279
Netherlands	2,633	6	0	0	3,004	359	11
Brazil	2,547	188	6	126	9,253	355	6,352
EU	897	12	0	9	3,006	303	1,806
Ecuador	1,957	43	2	9	3,986	292	1,737
Canada	736	9	0	9	2,933	235	1,962
Panama	5,294	266	5	174	11,413	228	5,891
Armenia	3,734	174	4	209	11,138	200	7,204
North Macedo..	1,715	95	2	46	4,094	189	2,191
Bolivia	2,906	116	4	46	4,473	166	1,401
Portugal	1,338	37	1	55	4,651	164	3,149
Moldova	1,508	82	1	66	4,968	163	3,297
Colombia	1,673	110	4	59	3,142	117	1,352
Kuwait	2,243	165	1	172	13,318	93	10,981
Dom. Rep.	2,146	126	2	30	4,394	86	2,163
Iraq	692	52	2	45	2,085	85	1,308
Honduras	2,608	94	2	9	3,033	83	341
Russia	1,446	44	1	72	5,106	81	3,580

## 26 - 50

	Active Today	Today			Total since 22 Jan		
		Confirmed	Deaths	Recovered	Total Confirmed	Total Deaths	Total Recovered
Guatemala	1,457	67	3	9	1,790	75	258
South Africa	2,460	215	2	243	5,245	75	2,709
Bos. and Herz.	1,171	131	3	48	2,259	72	1,017
Bahrain	2,423	283	4	333	20,311	69	17,819
Saudi Arabia	1,583	77	1	158	6,907	67	5,258
Kosovo	1,443	64	2	50	2,838	61	1,334
Oman	4,294	329	2	206	11,994	55	7,645
Qatar	1,109	156	0	166	36,439	52	35,278
Belarus	908	18	1	61	6,926	51	5,966
Argentina	1,367	94	2	41	2,459	45	1,047
El Salvador	654	53	1	31	1,641	44	944
Israel	2,752	211	1	37	5,105	43	2,309
Eq. Guinea	1,552	0	0	0	2,189	36	600
UAE	920	28	0	39	5,647	34	4,693
Ukraine	602	19	0	22	1,298	33	663
Azerbaijan	853	55	1	54	2,532	32	1,647
Kyrgyzstan	1,288	128	2	27	1,883	25	569
Gabon	1,083	43	0	85	2,750	21	1,646
Kazakhstan	1,371	89	0	57	3,472	20	2,081
Eswatini	642	47	0	25	1,283	17	624
Central Africa..	631	1	0	7	903	11	261
West Bank an..	1,299	66	0	0	1,546	10	237
Costa Rica	1,255	99	1	22	1,764	8	501
Singapore	660	42	0	43	8,013	5	7,348
Total World	699	30	1	21	1,750	75	976

Several countries are revising and updating case counts

Confirmed Cases in **Kyrgyzstan** have **doubled** since 1 July

Sorted by Total Deaths / 1M  
Top 50 countries selected by Active Cases / 1M  
Excluded countries with population < 1M



# Top 50 Countries: Raw Volume



## 1 - 25

	Active Cases	Today			Total since 22 Jan		
		Confirmed	Deaths	Recovered	Total Confirmed	Total Deaths	Total Recovered
US	2,284,558	66,273	941	26,784	3,497,847	137,407	1,075,882
EU	399,555	5,184	182	3,893	1,338,272	134,755	803,962
Brazil	541,284	39,924	1,233	26,673	1,966,748	75,366	1,350,098
UK	246,945	538	85	1	293,469	45,138	1,386
Mexico	28,361	6,149	579	6,538	317,635	36,906	252,368
Italy	12,493	162	13	575	243,506	34,997	196,016
France	101,500	928	91	223	210,568	30,123	78,945
Spain	78,705	875	4	0	257,494	28,413	150,376
India	331,175	32,676	605	20,736	968,857	24,914	612,768
Iran	23,590	2,388	199	2,291	264,561	13,410	227,561
Peru	98,934	3,884	188	3,139	337,751	12,417	226,400
Russia	211,069	6,410	156	10,417	745,197	11,753	522,375
Belgium	35,842	91	1	19	62,872	9,788	17,242
Germany	5,810	434	2	900	200,890	9,080	186,000
Canada	27,769	343	12	354	110,693	8,857	74,067
Chile	21,934	1,712	117	2,865	321,205	7,186	292,085
Netherlands	45,123	109	1	0	51,471	6,155	193
Colombia	85,123	5,621	182	2,997	159,898	5,969	68,806
Sweden	70,920	491	27	0	76,492	5,572	0
Pakistan	73,751	2,145	40	5,927	257,914	5,426	178,737
Turkey	12,788	947	17	1,013	215,940	5,419	197,733
Ecuador	34,530	759	28	157	70,329	5,158	30,641
China	597	20	2	38	85,246	4,644	80,005
South Africa	145,903	12,757	107	14,414	311,049	4,453	160,693
Egypt	54,641	913	59	591	84,843	4,067	26,135

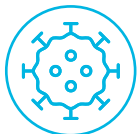
## 26 - 50

	Active Cases	Today			Total since 22 Jan		
		Confirmed	Deaths	Recovered	Total Confirmed	Total Deaths	Total Recovered
Indonesia	37,247	1,522	87	1,414	80,094	3,797	39,050
Iraq	27,814	2,110	87	1,839	83,867	3,432	52,621
Bangladesh	85,610	3,533	33	2,296	193,590	2,457	105,523
Saudi Arabia	55,101	2,671	42	5,488	240,474	2,325	183,048
Argentina	61,798	4,236	82	1,831	111,146	2,050	47,298
Romania	10,225	641	21	246	34,226	1,952	22,049
Bolivia	33,919	1,351	44	538	52,218	1,942	16,357
Portugal	13,640	375	8	560	47,426	1,676	32,110
Philippines	36,260	1,305	11	517	58,850	1,614	20,976
Poland	8,635	264	6	736	38,721	1,594	28,492
Ukraine	26,330	848	15	984	56,779	1,444	29,005
Afghanistan	11,444	254	46	1,002	34,994	1,094	22,456
Panama	22,844	1,147	22	750	49,243	982	25,417
Dom. Rep.	23,283	1,366	19	325	47,671	929	23,459
Nigeria	19,500	643	6	207	34,259	760	13,999
Belarus	8,584	174	6	580	65,443	480	56,379
Kuwait	9,581	703	3	736	56,877	399	46,897
Israel	23,823	1,828	5	324	44,188	376	19,989
Kazakhstan	25,747	1,674	0	1,058	65,188	375	39,066
UAE	9,095	275	0	393	55,848	335	46,418
Oman	21,928	1,679	8	1,051	61,247	281	39,038
Qatar	3,195	450	1	477	104,983	151	101,637
Bahrain	4,123	482	6	567	34,560	117	30,320
Singapore	3,863	248	0	251	46,878	27	42,988
Total World	5,411,101	230,420	5,478	159,778	13,554,477	584,124	7,559,252

Several countries are revising and updating case counts

**55%** of Confirmed Cases **Worldwide** have been reported as recovered

Sorted by Total Deaths  
Top 50 countries selected by Total Confirmed Cases  
Excluded countries with population < 1M



# United States: Per 1M



## 1 - 26

	Active Today	Today			Total since 22 Jan		
		Confirmed	Deaths	Recovered	Total Confirmed	Total Deaths	Total Recovered
New Jersey	8,727	36	5	377	20,501	1,768	10,005
New York	9,903	51	2	460	22,118	1,670	10,545
Connecticut	7,166	30	2	0	13,361	1,229	4,966
Massachuse..	1,246	31	4	151	16,300	1,214	13,840
Rhode Island	14,123	49	2	0	16,652	932	1,597
DC	12,300	113	4	0	15,623	809	2,514
Louisiana	5,890	448	3	1,496	18,098	745	11,463
Michigan	1,874	105	0	0	7,902	634	5,394
Illinois	2,686	94	1	10	12,455	586	9,182
Mississippi	7,853	206	159	N/A	12,820	586	4,381
Maryland	10,989	125	1	0	12,408	553	866
Pennsylvania	1,633	78	3	0	7,996	549	5,814
Indiana	1,698	102	1	0	7,928	414	5,816
Arizona	15,558	447	13	0	18,046	334	2,154
Georgia	9,868	365	3	0	12,040	291	1,881
New Hamps..	440	0	0	0	4,480	288	3,752
Minnesota	710	101	2	76	7,756	276	6,770
New Mexico	4,191	156	3	32	7,555	266	3,098
Ohio	1,711	112	1	0	5,935	264	3,959
Delaware	9,966	115	N/A	N/A	13,433	254	3,213
Alabama	6,541	370	10	0	12,047	247	5,258
Iowa	2,644	139	3	66	11,504	243	8,617
Virginia	7,265	127	2	12	8,614	233	1,116
Colorado	1,970	153	N/A	2,239	6,697	224	4,503
Florida	12,248	474	5	21	14,052	210	1,593
Arkansas	3,340	244	95	N/A	10,096	205	6,551

## 27 - 51

	Active Today	Today			Total since 22 Jan		
		Confirmed	Deaths	Recovered	Total Confirmed	Total Deaths	Total Recovered
S. Carolina	7,264	360	1	0	12,089	194	4,632
Missouri	3,846	86	1	0	5,085	186	1,053
California	6,323	166	2	89	8,913	185	2,405
Washington	3,792	84	0	9	5,807	185	1,830
N. Carolina	2,149	155	1	0	8,702	152	6,400
Nebraska	2,702	0	0	0	11,227	148	8,377
Kentucky	3,258	102	2	19	4,628	144	1,225
Wisconsin	1,481	141	0	0	6,651	142	5,028
South Dakota	992	90	2	72	8,650	125	7,532
Oregon	1,267	58	66	961	3,094	124	1,703
Texas	4,952	368	4	237	10,223	123	5,148
North Dakota	941	94	0	98	5,990	115	4,934
Tennessee	4,162	333	2	232	10,113	115	5,836
Oklahoma	1,267	272	1	185	5,765	109	4,389
Nevada	2,311	220	N/A	998	9,836	109	7,417
Kansas	3,073	294	2	39	7,242	104	4,064
Vermont	261	21	0	0	2,112	90	1,761
Maine	286	9	0	13	2,662	85	2,291
Utah	3,763	129	2	150	9,635	73	5,800
Idaho	4,937	407	4	86	6,964	62	1,966
West Virginia	815	84	1	9	2,543	55	1,673
Wyoming	790	59	0	76	3,430	38	2,602
Montana	1,073	135	0	29	1,961	32	856
Alaska	1,292	71	0	37	2,230	23	915
Hawaii	225	20	0	21	913	16	672

Confirmed Cases in **Mississippi** have increased **37%** since 1 July

Sorted by Total Deaths / 1M





# United States: Raw Volume

Updated 16 July 2020, 3:30 GMT 6

## 1 - 26

	Active Cases	Today			Total since 22 Jan		
		Confirmed	Deaths	Recovered	Total Confirmed	Total Deaths	Total Recovered
New York	192,645	992	33	8,950	430,270	32,495	205,130
New Jersey	77,519	321	43	3,350	182,094	15,705	88,870
Massachuse..	8,589	217	28	1,043	112,347	8,368	95,390
Illinois	34,042	1,187	8	125	157,825	7,427	116,356
California	249,828	6,555	70	3,522	352,153	7,305	95,020
Pennsylvania	20,902	1,001	42	0	102,361	7,023	74,436
Michigan	18,716	1,049	4	0	78,913	6,330	53,867
Florida	263,070	10,181	112	459	301,810	4,521	34,219
Connecticut	25,550	106	8	0	47,636	4,380	17,706
Texas	143,579	10,662	108	6,878	296,434	3,579	149,276
Louisiana	27,382	2,082	15	6,954	84,133	3,463	53,288
Maryland	66,437	756	7	0	75,016	3,341	5,238
Georgia	104,773	3,871	37	0	127,834	3,091	19,970
Ohio	20,005	1,311	7	0	69,370	3,083	46,282
Indiana	11,430	685	10	0	53,370	2,785	39,155
Arizona	113,242	3,257	97	0	131,354	2,434	15,678
Virginia	62,008	1,084	15	104	73,527	1,992	9,527
Mississippi	23,373	613	472	N/A	38,155	1,744	13,038
N. Carolina	22,544	1,623	12	0	91,266	1,598	67,124
Minnesota	4,005	572	10	430	43,742	1,558	38,179
Washington	28,876	640	3	66	44,217	1,407	13,934
Colorado	11,345	881	N/A	12,894	38,567	1,290	25,932
Alabama	32,073	1,812	47	0	59,067	1,211	25,783
Missouri	23,605	525	7	0	31,209	1,144	6,460
S. Carolina	37,398	1,856	5	0	62,245	998	23,849
Rhode Island	14,961	52	2	0	17,640	987	1,692

## 27 - 51

	Active Cases	Today			Total since 22 Jan		
		Confirmed	Deaths	Recovered	Total Confirmed	Total Deaths	Total Recovered
Wisconsin	8,625	821	1	0	38,727	827	29,275
Tennessee	28,421	2,273	16	1,585	69,061	783	39,857
Iowa	8,343	438	10	208	36,297	767	27,187
Kentucky	14,557	454	10	86	20,677	645	5,475
Arkansas	10,080	735	287	N/A	30,468	618	19,770
DC	8,681	80	3	0	11,026	571	1,774
New Mexico	8,788	327	6	67	15,841	557	6,496
Oregon	5,345	245	277	4,055	13,050	521	7,184
Oklahoma	5,015	1,075	4	731	22,813	432	17,366
New Hamps..	598	0	0	0	6,091	392	5,101
Nevada	7,118	678	N/A	3,074	30,297	335	22,844
Kansas	8,954	856	5	113	21,097	303	11,840
Nebraska	5,226	0	0	0	21,717	286	16,205
Delaware	9,705	112	N/A	N/A	13,081	247	3,129
Utah	12,065	413	7	482	30,891	233	18,593
Maine	385	12	0	17	3,578	114	3,079
South Dakota	878	80	2	64	7,652	111	6,663
Idaho	8,822	727	7	153	12,445	110	3,513
West Virginia	1,460	150	1	17	4,557	98	2,999
North Dakota	717	72	0	75	4,565	88	3,760
Vermont	163	13	0	0	1,318	56	1,099
Montana	1,147	144	0	31	2,096	34	915
Wyoming	457	34	0	44	1,985	22	1,506
Hawaii	319	28	0	30	1,292	22	951
Alaska	945	52	0	27	1,631	17	669

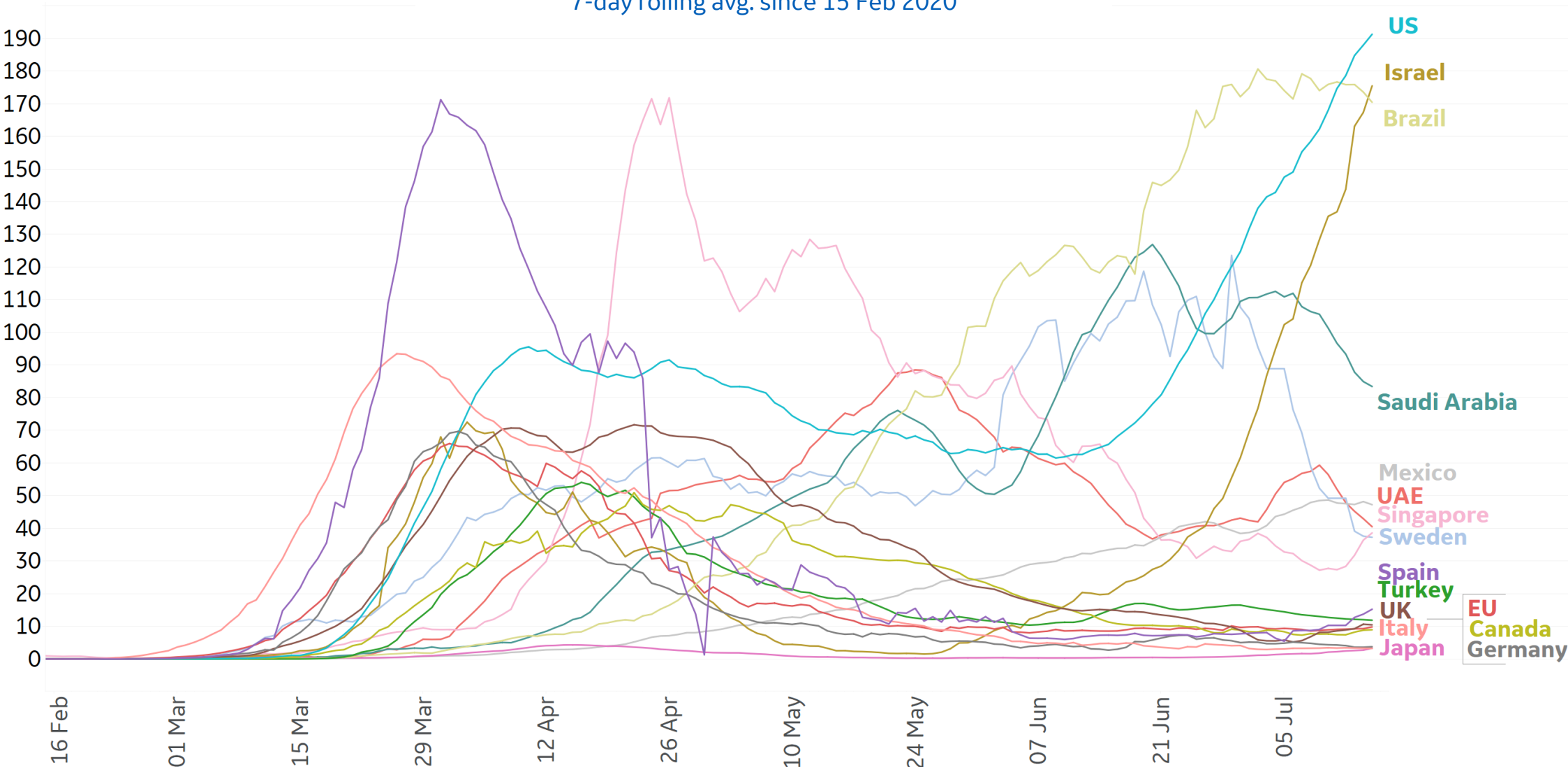
NY, NJ, MA, IL, and CA account for 52% of Total Reported Deaths in the US

Sorted by volume of Total Deaths



# New Confirmed Cases in Select Countries

Daily New Confirmed Cases / 1M  
7-day rolling avg. since 15 Feb 2020

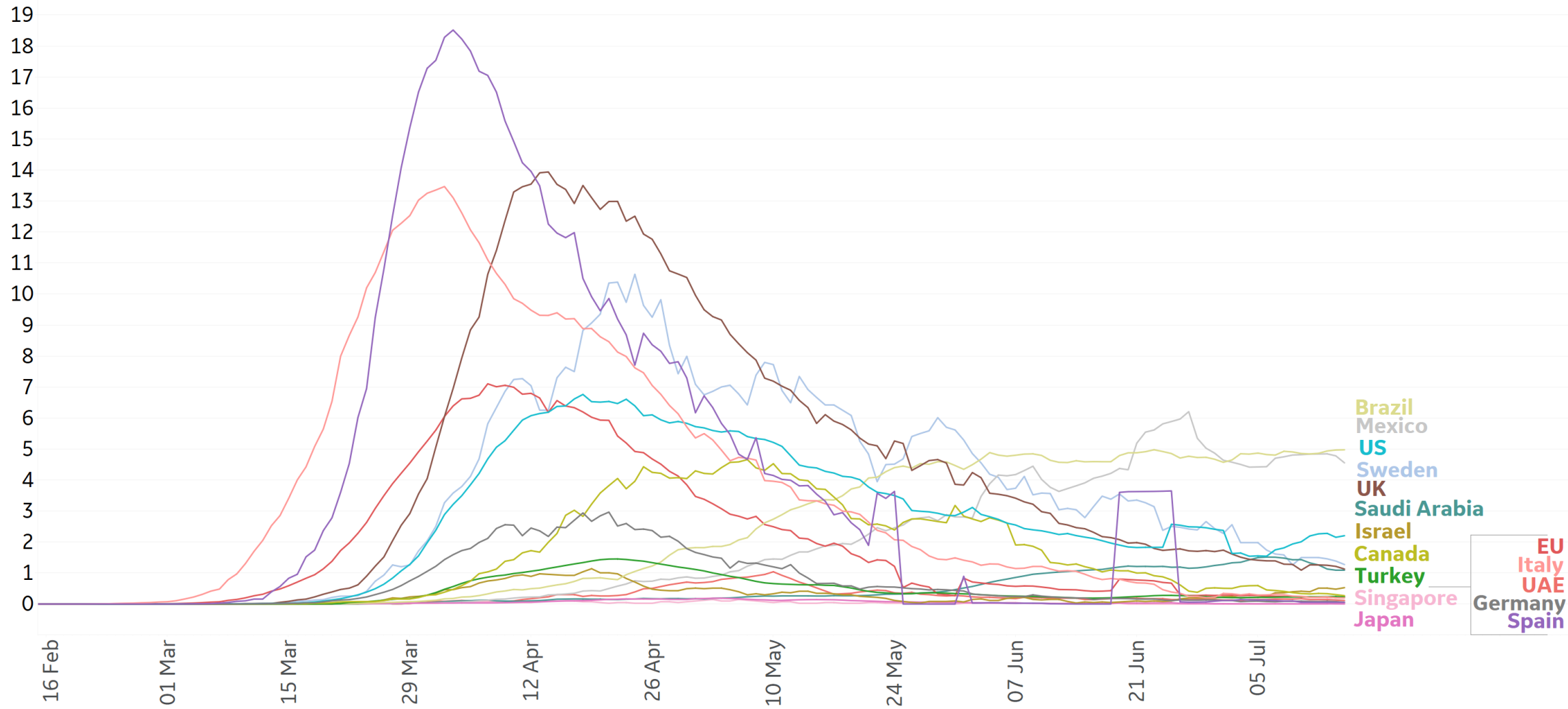




# New Deaths in Select Countries

## Daily New Deaths / 1M

7-day rolling avg. since 15 Feb 2020



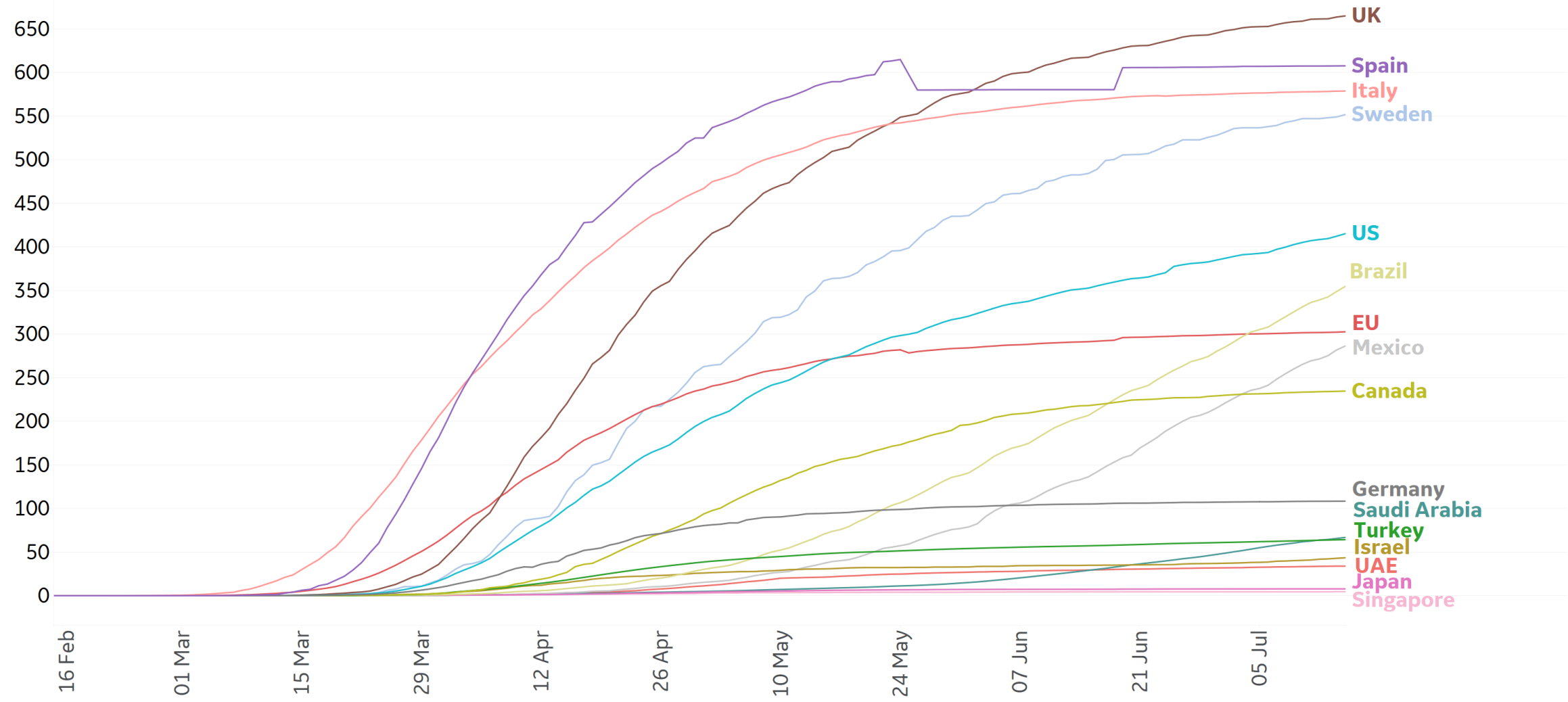




# Cumulative Deaths in Select Countries

Updated 16 July 2020, 3:30 GMT 9

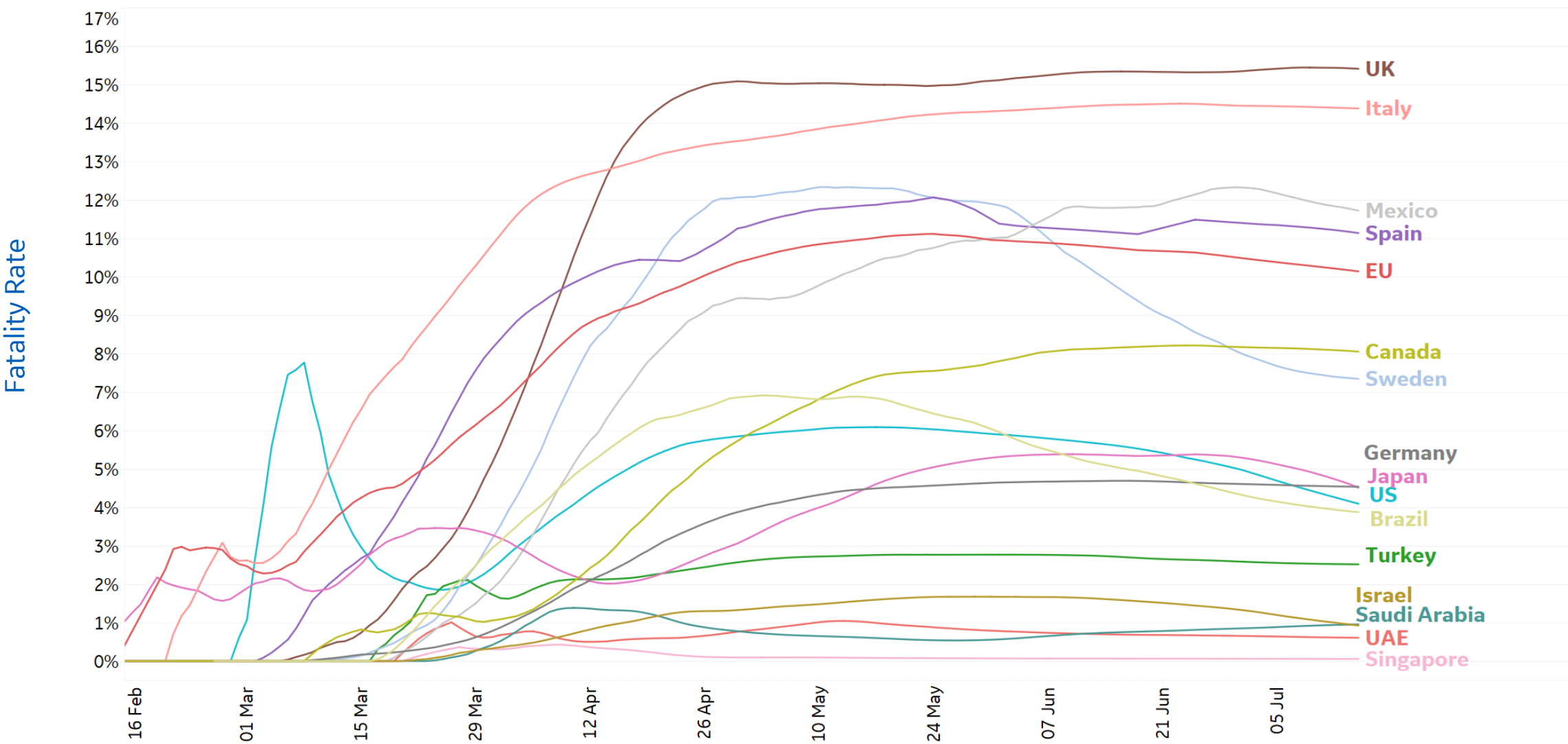
**Cumulative Deaths / 1M**  
Since 15 Feb 2020





# Fatality Rate in Select Countries

**Deaths / Confirmed Cases**  
7-day rolling avg. since 15 Feb 2020

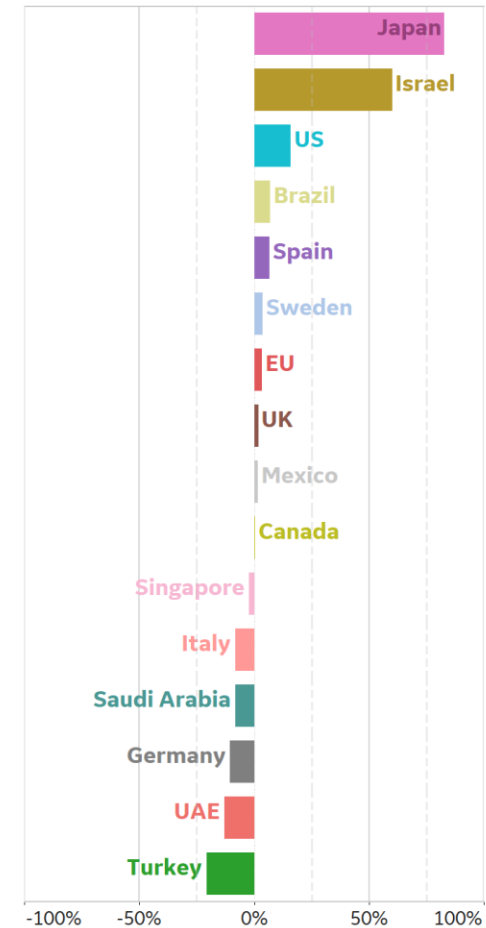




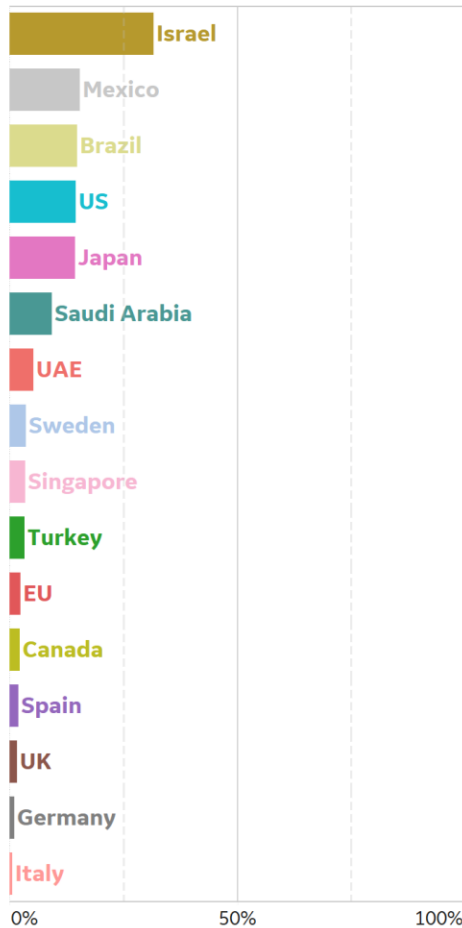
# % Change in Case Volume in Select Countries

Over Previous 7 days

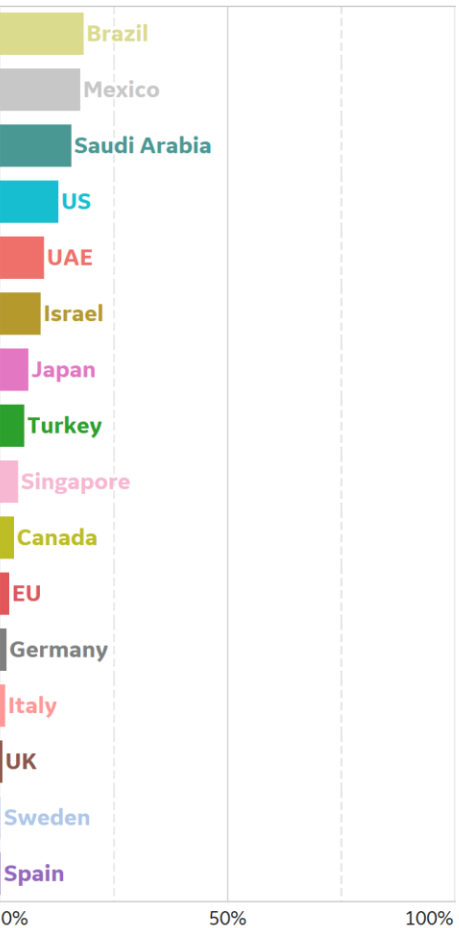
Active Cases



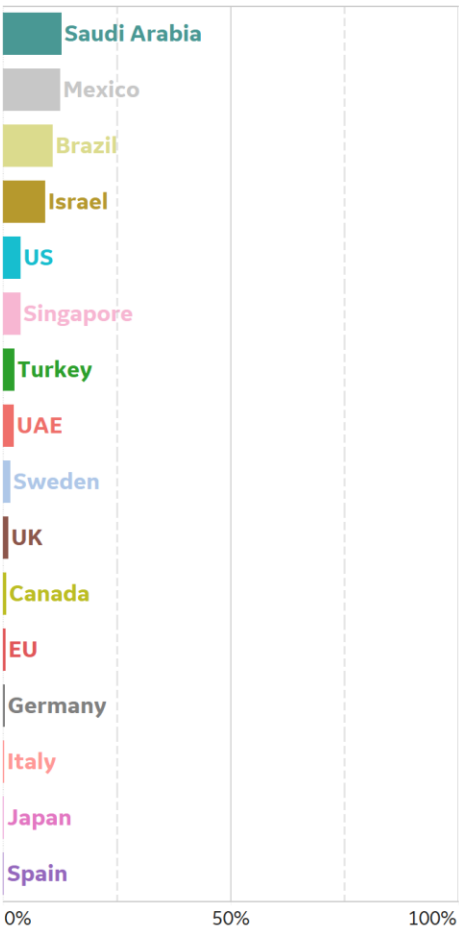
Confirmed Cases



Reported Recoveries



Reported Deaths





# Feature: All Cause Mortality in US



## Data Source Highlights

In the following pages, we use CDC data from 2015 – 2019 through the National Center for Health Statistics.

- *Number of deaths reported in these tables are the total number of deaths received and coded as of the date of analysis, and may not represent all deaths that occurred in that period.*
- *Data for 2020 is provisional and may be incomplete because of the lag in time between when the death occurred and when the death certificate is completed, submitted to NCHS and processed for reporting purposes.*

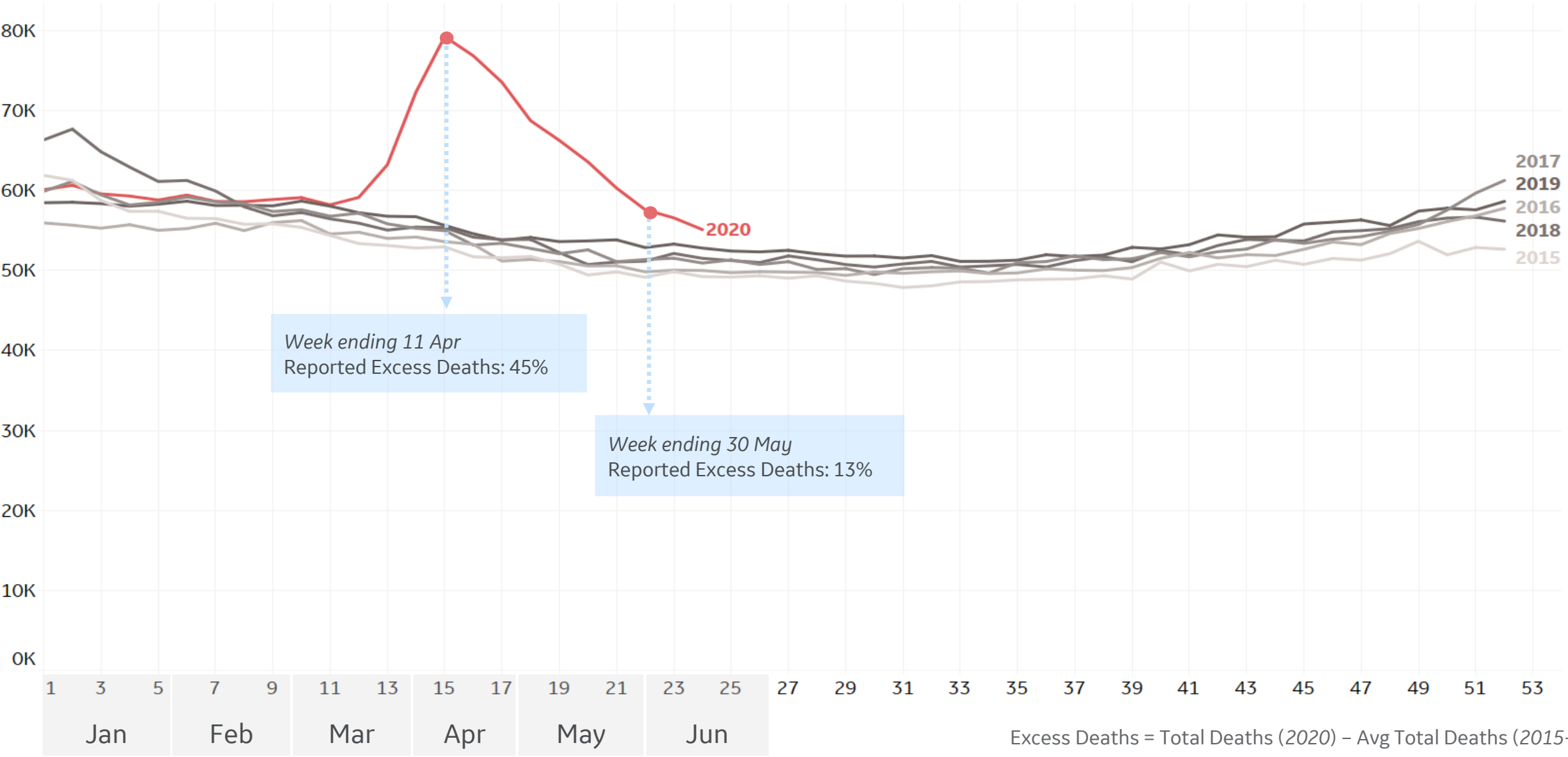
For data in 2020, we use Weekly Counts of Death by Jurisdiction and Age Group. Per the CDC:

- **Provisional counts are not final and are subject to change.** *Counts from previous weeks are continually revised as additional records are received and processed.*
- **Provisional data are not yet complete.** *Counts may not include all deaths that occurred during a given time period, especially for more recent periods. However, we can estimate how complete our numbers are by looking at the average number of deaths reported in previous years.*
- **Death counts should not be compared across jurisdictions.** *Some jurisdictions report deaths on a daily basis, while others report deaths weekly or monthly. In addition, vital record reporting may also be affected or delayed by COVID-19 related response activities.*

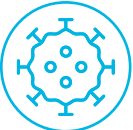


# Feature: All Cause Mortality in the US

Total Deaths by Week 2015-2020

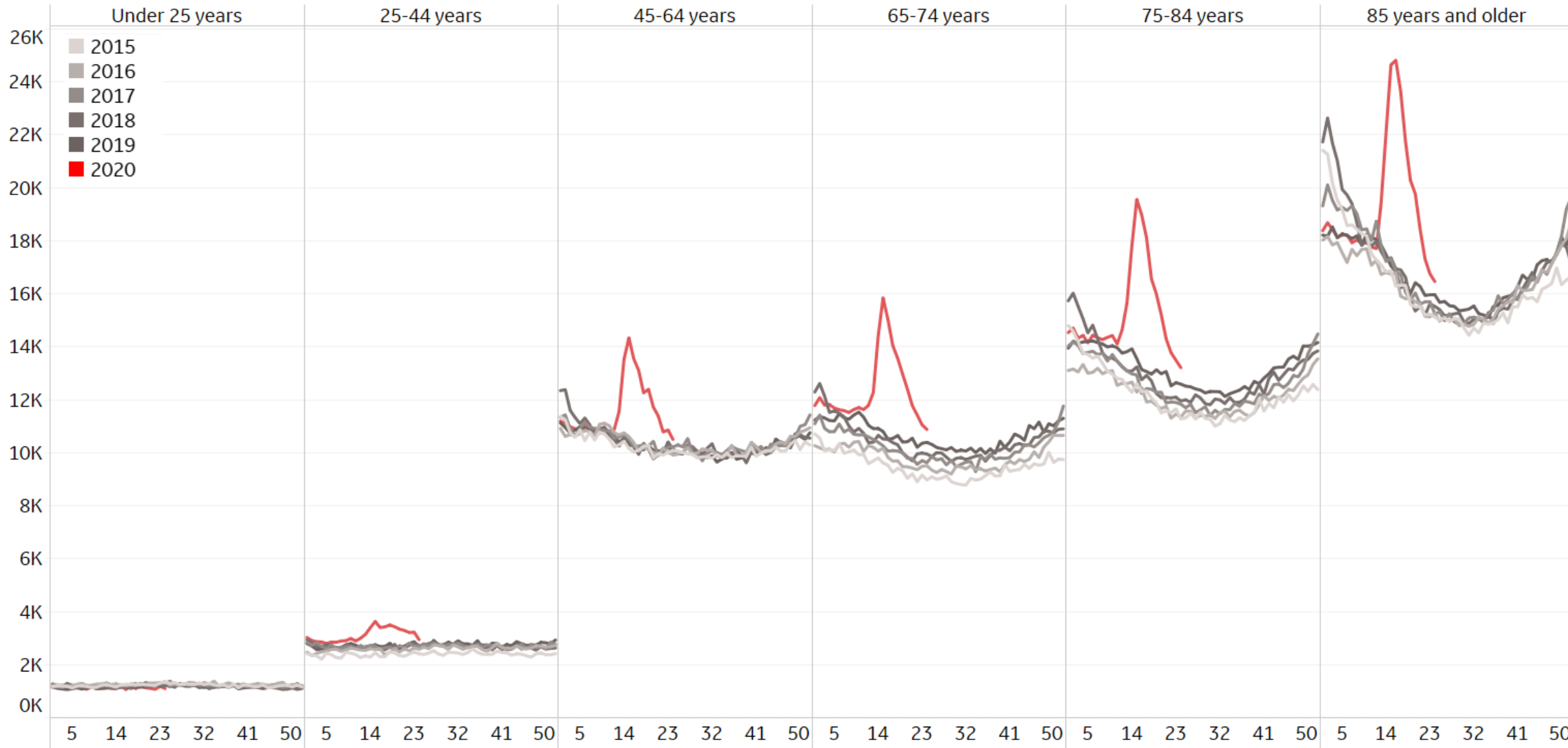






# Feature: All Cause Mortality in the US by Age Group

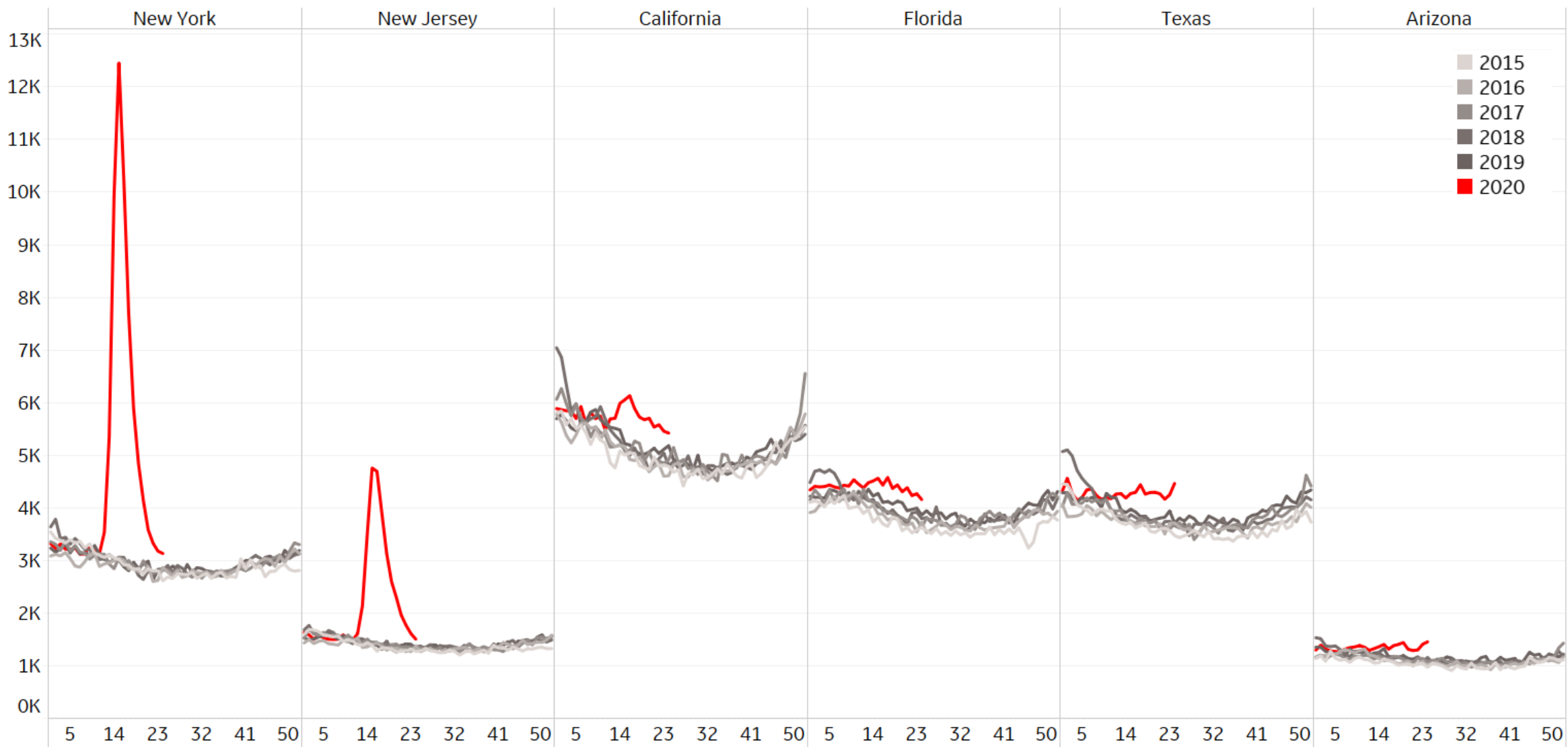
## Total Deaths by Week 2015-2020





# Feature: All Cause Mortality for Select States

Total Deaths by Week 2015-2020











## Per 1M in Region

	Today	Change
Active Cases	3,399	+0.2%
Confirmed	8 new	+0.2%
Deaths	1 new	+0.2%
Recovered	0 new	+0%

## Most Active Cases per 1M

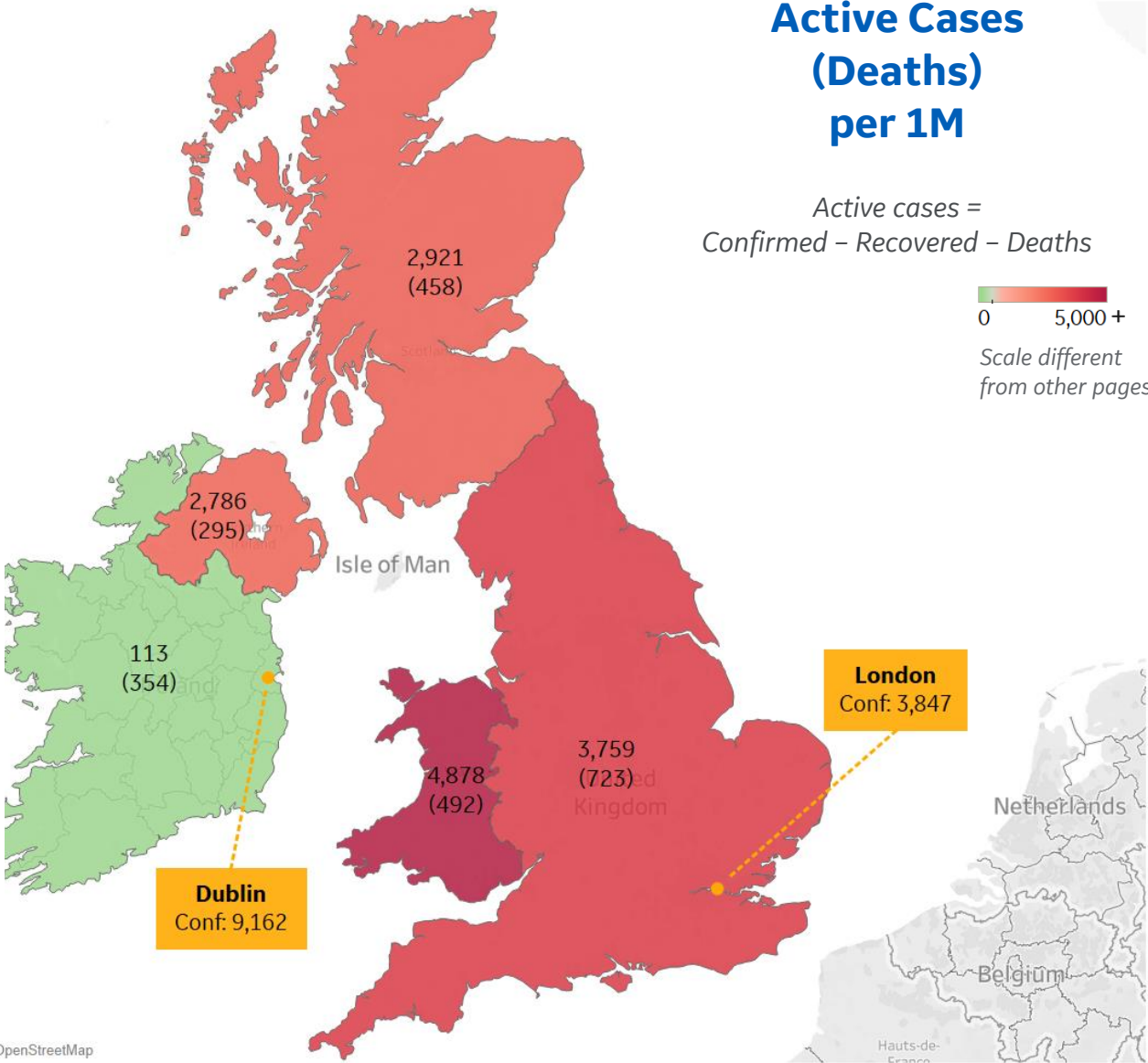
Wales	4,878
England	3,759
Scotland	2,921
Northern Ireland	2,786
Ireland	113

## Active Cases (Deaths) per 1M

Active cases =  
Confirmed – Recovered – Deaths

0 5,000 +

Scale different  
from other pages





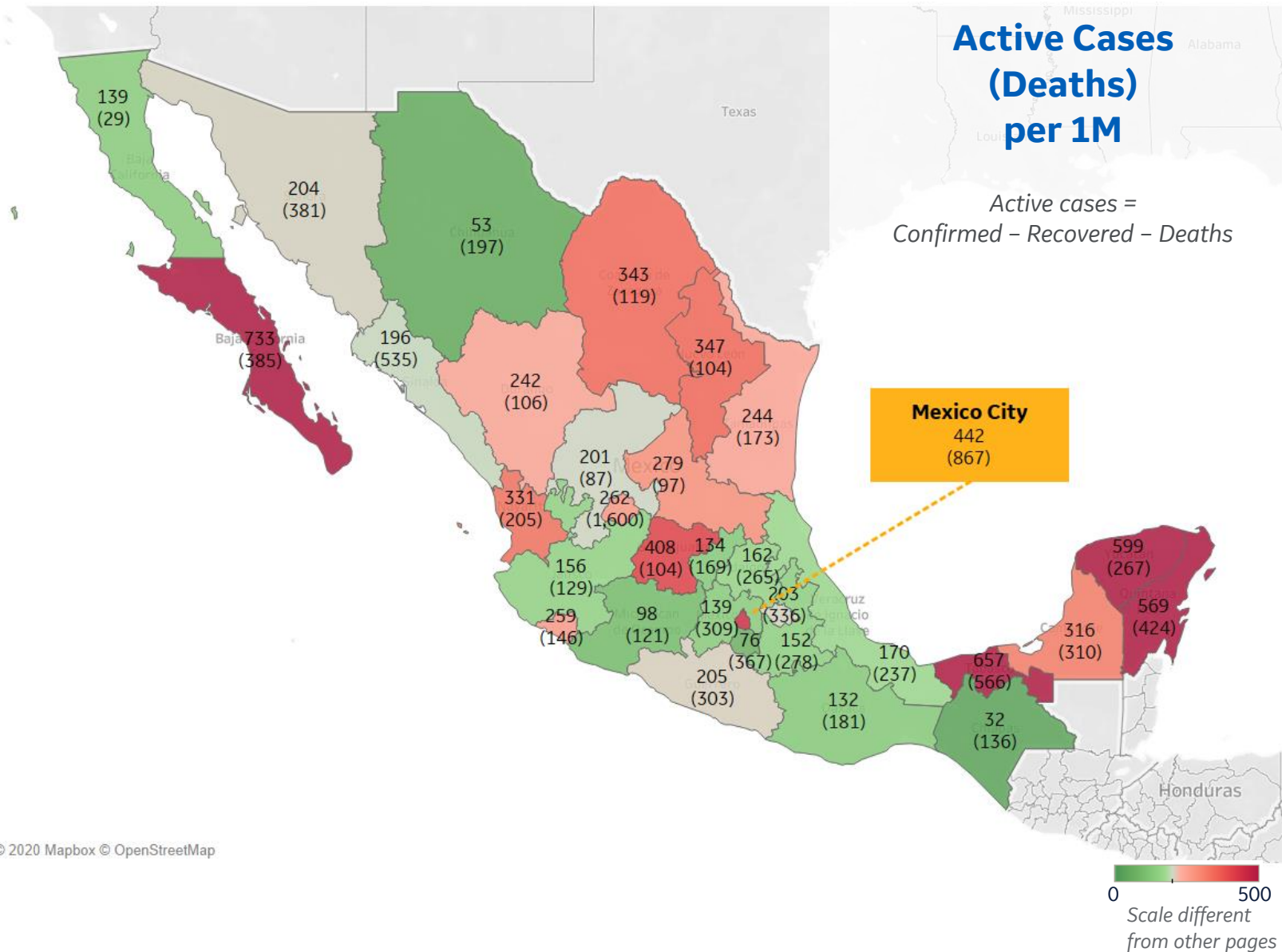


## Per 1M in Region

	Today	Change
Active Cases	220	-3%
Confirmed	48 new	+2%
Deaths	4 new	+2%
Recovered	50 new	+3%

## Most Active Cases per 1M

Baja California Sur	733
Tabasco	657
Yucatan	599
Quintana Roo	569
Distrito Federal	442
Guanajuato	408
Nuevo Leon	347
Coahuila	343
Nayarit	331
Campeche	316



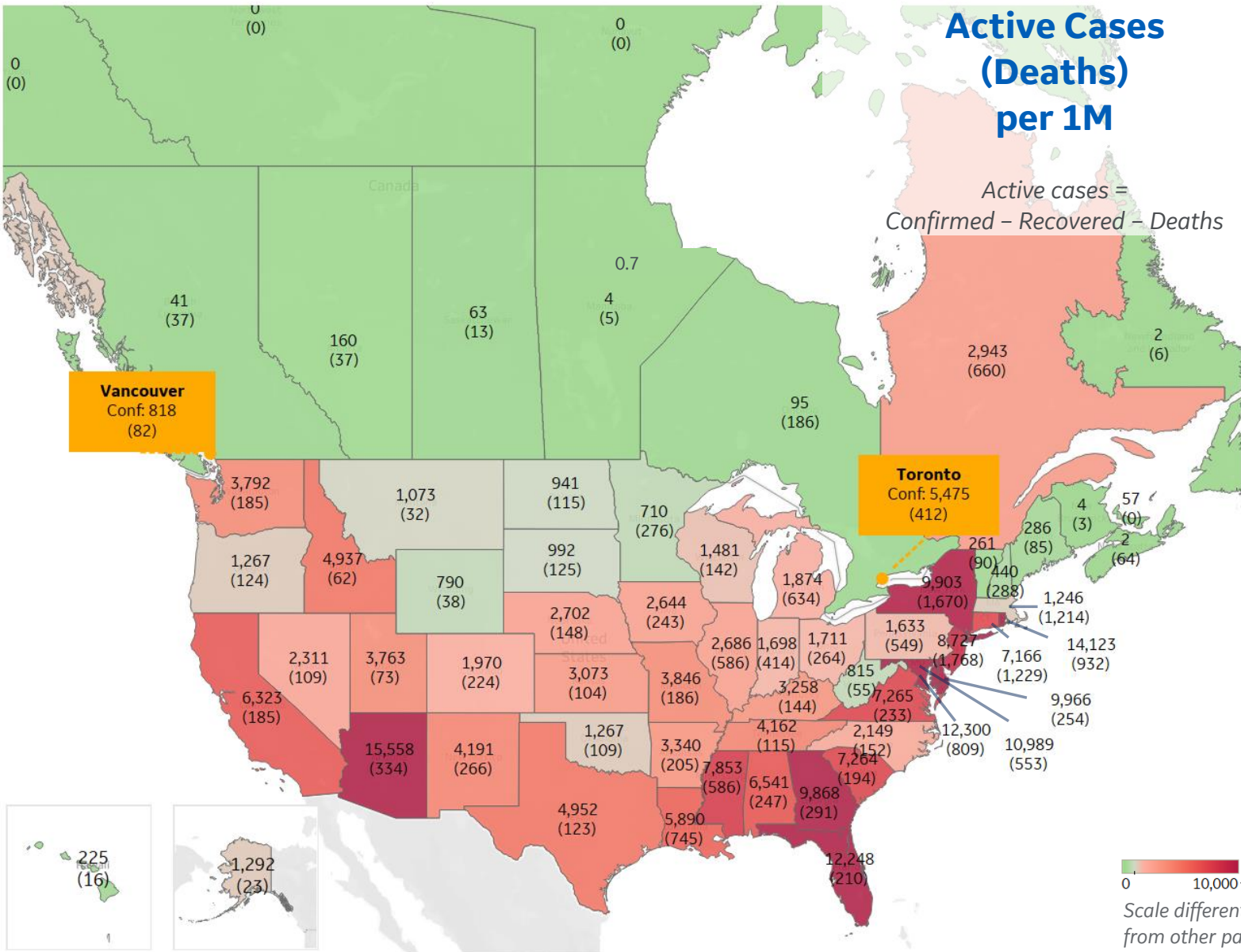


## Per 1M in Region

	Today	Change
Active Cases	6,271	+2%
Confirmed	181 new	+2%
Deaths	3 new	+0.7%
Recovered	74 new	+2%

## Most Active Cases per 1M

Arizona	15,558
Rhode Island	14,123
DC	12,300
Florida	12,248
Maryland	10,989
Delaware	9,966
New York	9,903
Georgia	9,868
New Jersey	8,727
Mississippi	7,853



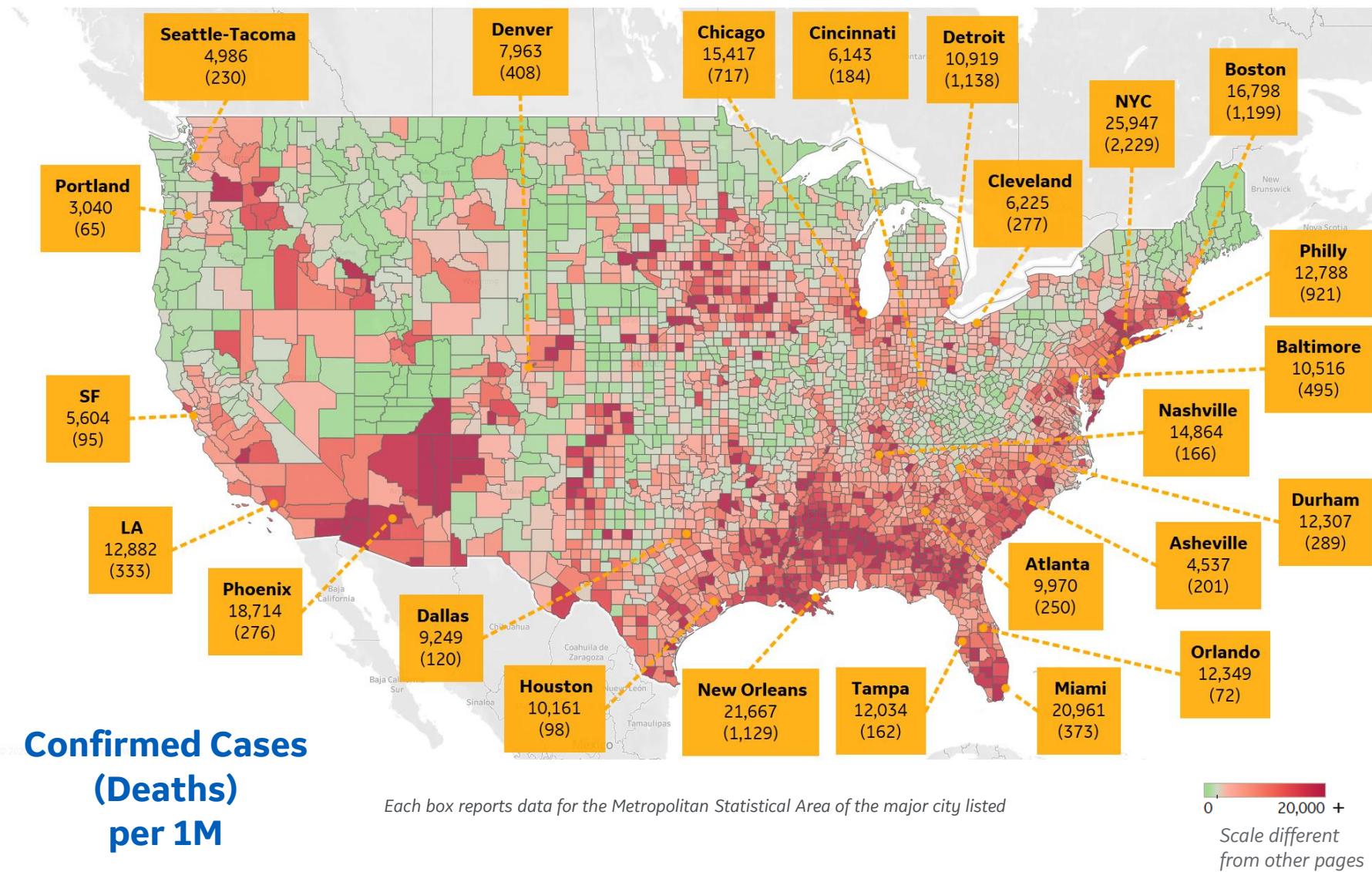




# US by County & Metro, Total to Date

Updated 16 July 2020, 3:30 GMT

21



## Top 10 Northeast Counties

Total Confirmed Cases / 1M

Rockland County, NY	42,184
Westchester County, NY	36,583
Passaic County, NJ	34,129
Nassau County, NY	31,293
Union County, NJ	29,771
Suffolk County, NY	28,625
Hudson County, NJ	28,583
Orange County, NY	28,259
New York City*	26,387
Suffolk County, MA	25,390

## Top 10 Other US Counties

Total Confirmed Cases / 1M

Yakima County, WA	33,627
Jefferson Parish, LA	26,854
Miami-Dade County, FL	26,617
Orleans Parish, LA	22,930
Prince George's County, MD	22,103
Davidson County, TN	20,961
Nueces County, TX	20,790
Charleston County, SC	20,578
Maricopa County, AZ	19,281
Cook County, IL	18,768

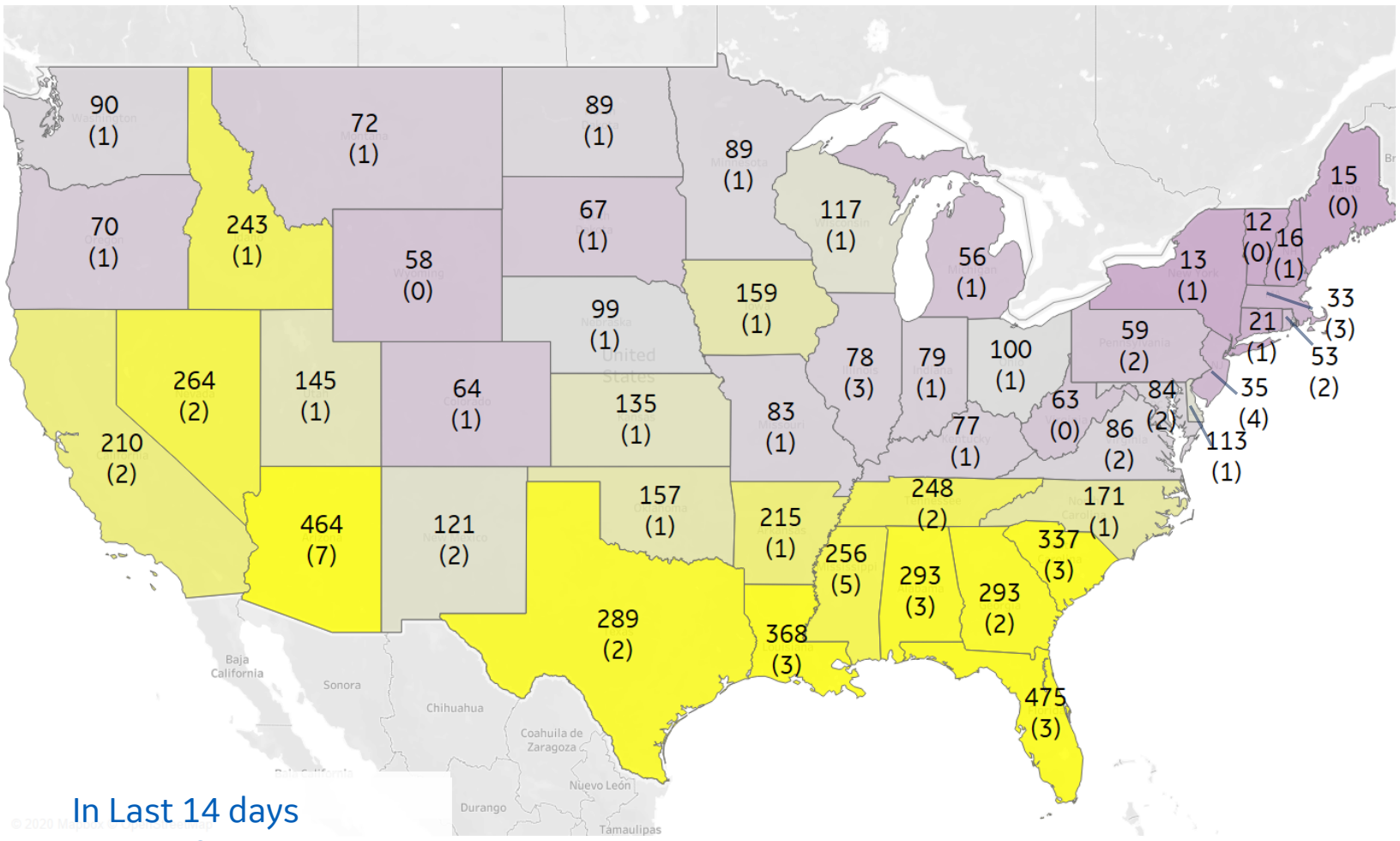
**Note:** Includes counties ≥ 250K population  
\* New York City counties aggregated into one reporting area



# US, New in Last 14 days

Updated 16 July 2020, 3:30 GMT

22



## Top 10 by New Confirmed

Avg New Confirmed Cases / 1M

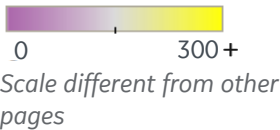
Florida	475
Arizona	464
Louisiana	368
South Carolina	337
Georgia	293
Alabama	293
Texas	289
Nevada	264
Mississippi	256
Tennessee	248

## Top 10 by New Deaths

Avg New Deaths / 1M

Arizona	7
Mississippi	5
New Jersey	4
Alabama	3
Florida	3
Illinois	3
Louisiana	3
Massachusetts	3
South Carolina	3
California	2

In Last 14 days  
**Avg New Confirmed Cases**  
**(Avg New Deaths)**  
**per 1M**





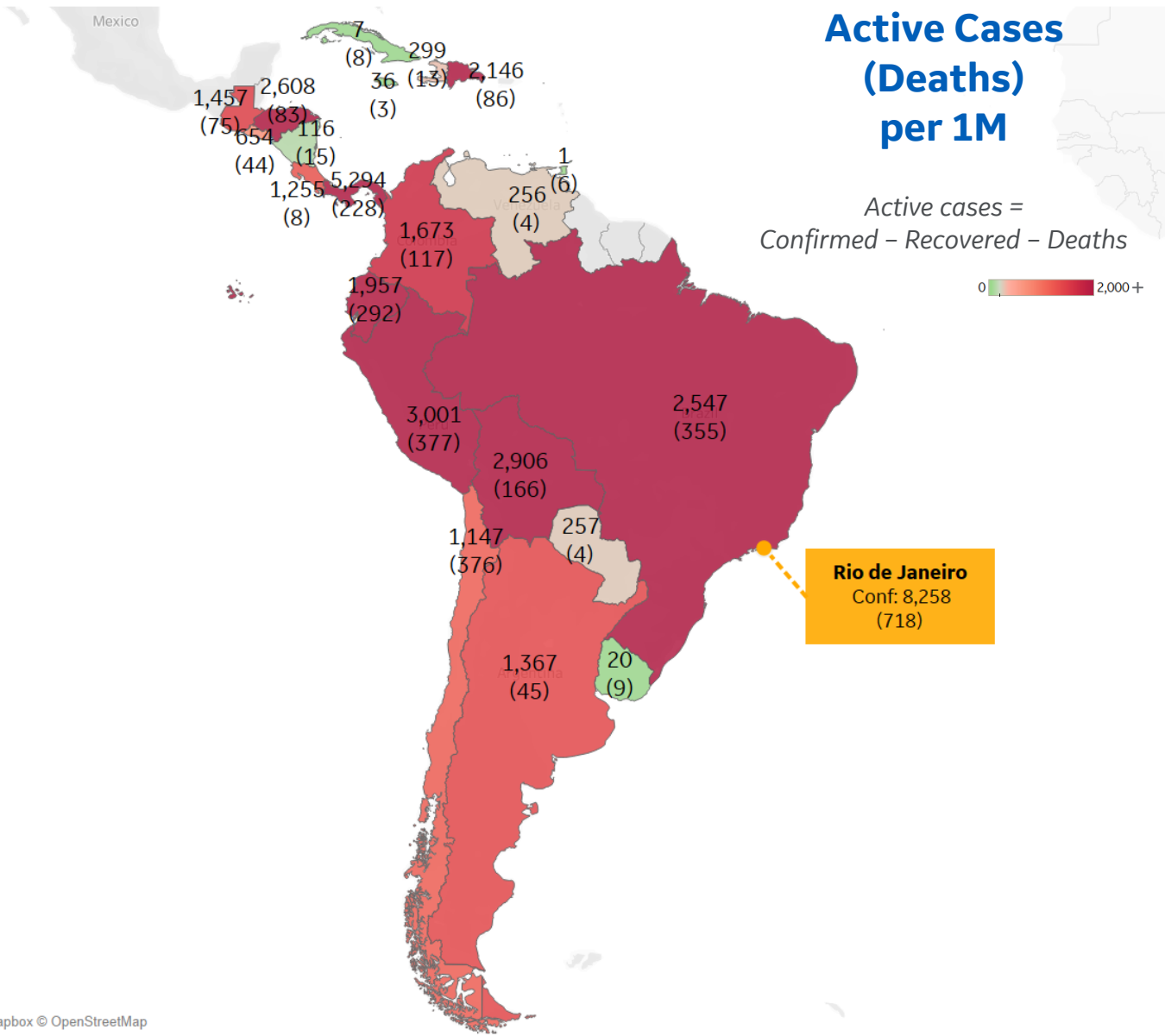
## Per 1M in Region

	Today	Change
Active Cases	1,922	+2%
Confirmed	122 new	+2%
Deaths	4 new	+2%
Recovered	78 new	+2%

## Most Active Cases per 1M

Panama	5,294
Peru	3,001
Bolivia	2,906
Honduras	2,608
Brazil	2,547
Dom. Rep.	2,146
Ecuador	1,957
Colombia	1,673
Guatemala	1,457
Argentina	1,367

\* Excludes regions with population < 1M







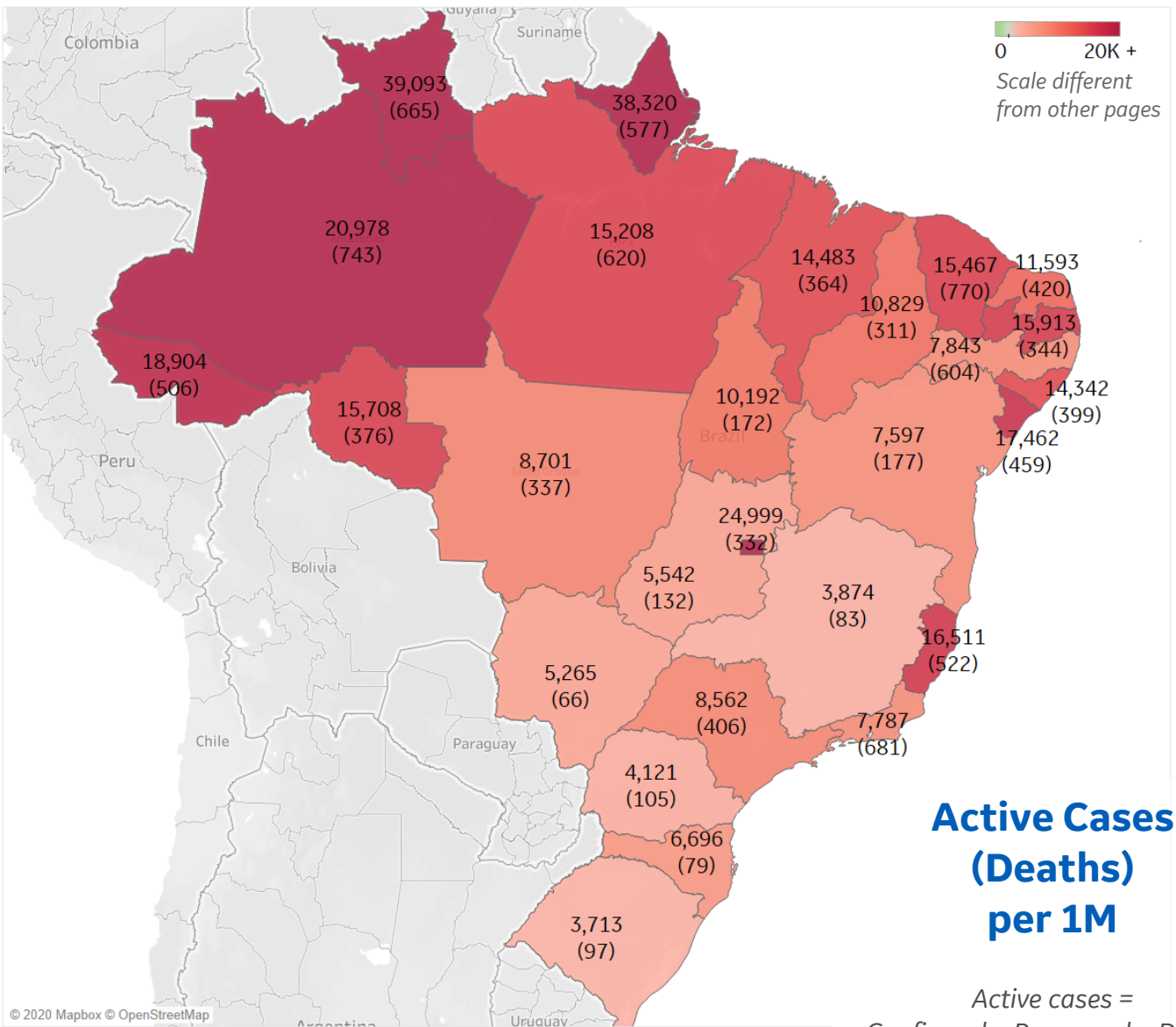
## Per 1M in Region

	Today	Change
Active Cases	2,547	+2%
Confirmed	188 new	+2%
Deaths	6 new	+2%
Recovered	126 new	+2%

## Most Active Cases per 1M

Distrito Federal	24,999
Amazonas	20,978
Sergipe	17,462
Espírito Santo	16,511
Paraíba	15,913
Rondônia	15,708
Ceará	15,467
Pará	15,208
Maranhão	14,483
Alagoas	14,342

\* Excludes regions with population < 1M





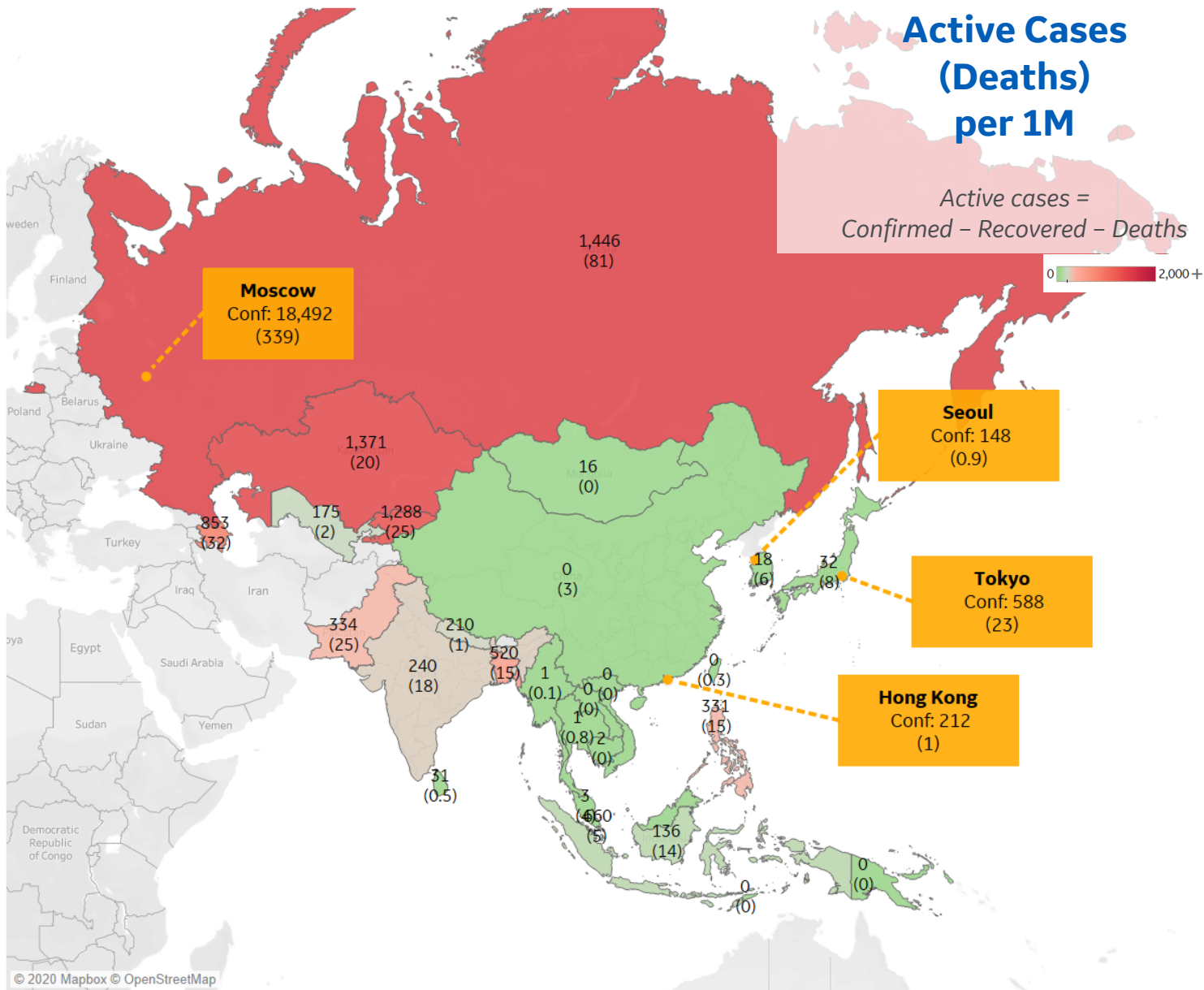
## Per 1M in Region

	Today	Change
Active Cases	193	+1%
Confirmed	12 new	+2%
Deaths	0.2 new	+2%
Recovered	10 new	+3%

## Most Active Cases per 1M

Russia	1,446
Kazakhstan	1,371
Kyrgyzstan	1,288
Azerbaijan	853
Singapore	660
Bangladesh	520
Pakistan	334
Philippines	331
India	240
Nepal	210

\* Excludes regions with population < 1M





## Per 1M in Region

	Today	Change
Active Cases	86	+9%
Confirmed	10 new	+3%
Deaths	0.1 new	+2%
Recovered	3 new	+1%

## Most Active Cases per 1M

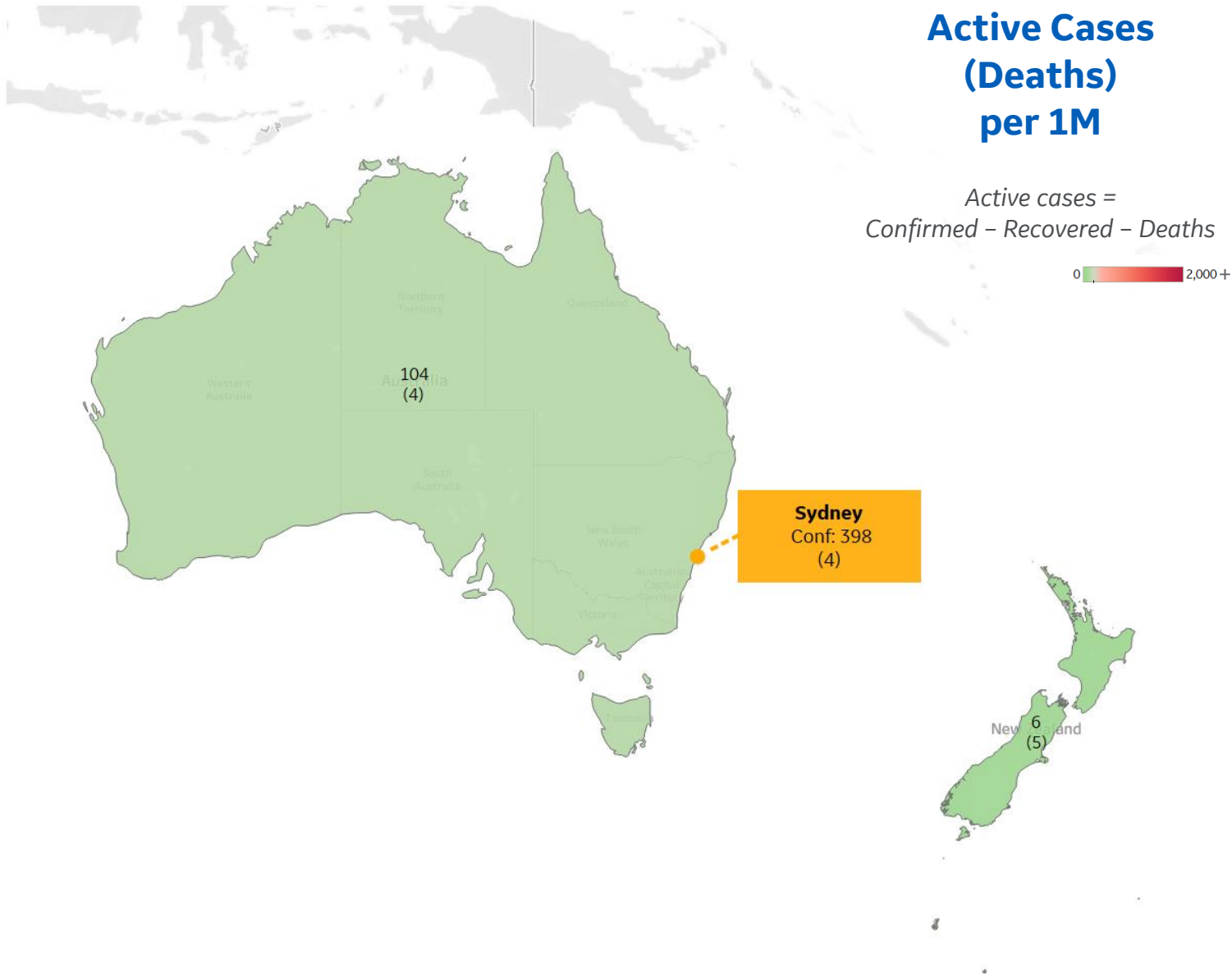
Australia	104
New Zealand	6

\* Excludes regions with population < 1M

## Active Cases (Deaths) per 1M

Active cases =  
Confirmed - Recovered - Deaths

0 2,000 +





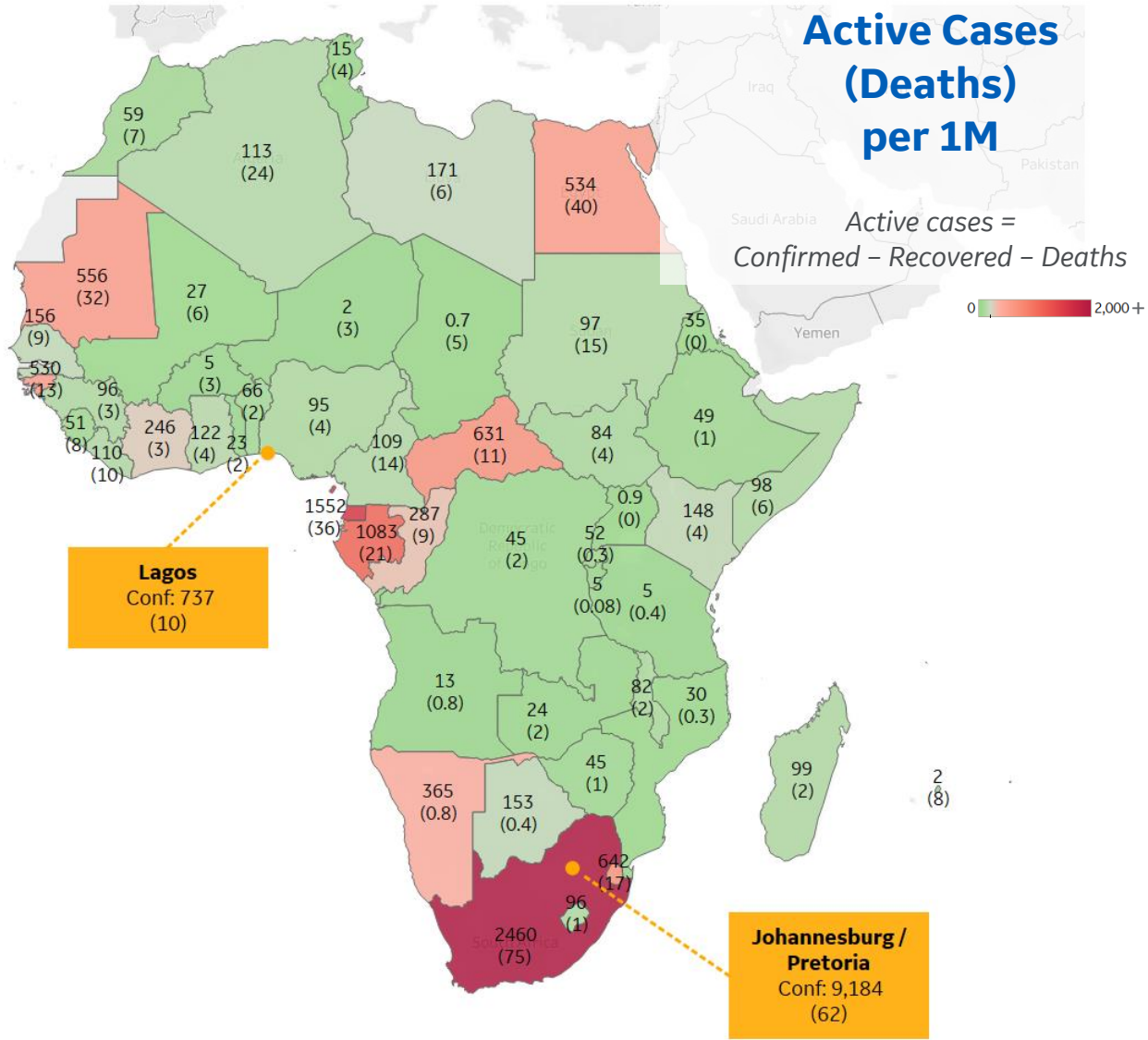
## Per 1M in Region

	Today	Change
Active Cases	222	+0%
Confirmed	13 new	+3%
Deaths	0.2 new	+2%
Recovered	14 new	+6%

## Most Active Cases per 1M

South Africa	2,460
Eq. Guinea	1,552
Gabon	1,083
Eswatini	642
Central African R..	631
Mauritania	556
Egypt	534
Guinea-Bissau	530
Namibia	365
Congo (Brazzavil..	287

\* Excludes regions with population < 1M





# Sources



\*\* Per 1M = Per 1 Million Population unless otherwise noted

**Johns Hopkins Coronavirus Resource Center:**

<https://coronavirus.jhu.edu/map.html>

**Worldometer Coronavirus Reporting:**

<https://www.worldometers.info/coronavirus/>

**Public Health England:**

<https://www.gov.uk/government/publications/covid-19-track-coronavirus-cases>

**US Department of Homeland Security, Homeland Infrastructure Foundation-Level Data:**

<https://hifld-geoplatform.opendata.arcgis.com/datasets/hospitals>

**City of New York, NYC Health:**

<https://www1.nyc.gov/site/doh/covid/covid-19-data.page>

**Chicago Coronavirus Latest Data:**

<https://www.chicago.gov/city/en/sites/covid-19/home/latest-data.html>

**National Health Commission of the PRC:**

<http://www.nhc.gov.cn/xcs/yqtb/202003/bf66696029ba420098164607240074f8.shtml>

**Korean Centers for Disease Control and Prevention:**

[http://www.cdc.go.kr/cdc\\_eng/](http://www.cdc.go.kr/cdc_eng/)

**CDC, Severe Outcomes Among Patients with Coronavirus Disease 2019 (COVID-19):**

<https://www.cdc.gov/mmwr/volumes/69/wr/mm6912e2.htm>

**Italian Department of Civil Protection, COVID Monitoring:**

<http://opendatadpc.maps.arcgis.com/apps/opsdashboard/index.html#/b0c68bce2cce478eaac82fe38d4138b1>

**The COVID Tracking Project:**

<https://covidtracking.com/data/>

**UK Office for National Statistics**

<https://www.ons.gov.uk/peoplepopulationandcommunity/birthsdeathsandmarriages/deaths/bulletins/deathsregisteredweeklyinenglandandwalesprovisional/weekending24april2020>

**WHO Europe, Surveillance Report:**

<http://www.euro.who.int/en/health-topics/health-emergencies/coronavirus-covid-19/weekly-surveillance-report>

**OECD Economic Outlooks, Statistics:**

[https://www.oecd-ilibrary.org/economics/data/oecd-economic-outlook-statistics-and-projections\\_eo-data-en](https://www.oecd-ilibrary.org/economics/data/oecd-economic-outlook-statistics-and-projections_eo-data-en)

**WHO Europe, Principles for Transition:**

<http://www.euro.who.int/en/media-centre/sections/statements/2020/statement-transition-to-a-new-normal-during-the-covid-19-pandemic-must-be-guided-by-public-health-principles>

**COVID-19 Information for Switzerland:**

<https://www.corona-data.ch/>

**CIA World Factbook:**

<https://www.cia.gov/library/publications/resources/the-world-factbook/>

**Italian Ministry of Health:**

<http://www.salute.gov.it/portale/nuovocoronavirus/dettaglioContenutiNuovoCoronavirus.jsp?lingua=italiano&id=5351&area=nuovoCoronavirus&menu=vuoto>

**New South Wales Government:**

<https://www.health.nsw.gov.au/Infectious/diseases/Pages/covid-19-latest.aspx>

**Provincial Health Services Authority of Canada. BC Center for Disease Control:**

<http://www.bccdc.ca/about/news-stories/stories/2020/information-on-novel-coronavirus>

**Coronavirus Cases in Japan by Prefecture, Nippon Communications Foundation:**

<https://www.nippon.com/en/japan-data/h00657/coronavirus-cases-in-japan-by-prefecture.html>

**Secretary of Health, Mexico:**

<https://www.gob.mx/salud/en>

**OECD Economic Outlooks, Statistics:**

[https://www.oecd-ilibrary.org/economics/data/oecd-economic-outlook-statistics-and-projections\\_eo-data-en](https://www.oecd-ilibrary.org/economics/data/oecd-economic-outlook-statistics-and-projections_eo-data-en)

**Public Health Authority of Sweden:**

<https://www.folkhalsomyndigheten.se/smittskydd-beredskap/utbrott/aktuella-utbrott/covid-19/bekraftade-fall-i-sverige>

**National Public Health Agency of France:**

<https://www.santepubliquefrance.fr/regions/ile-de-france/documents/bulletin-regional/2020/covid-19-point-epidemiologique-en-ile-de-france-du-23-avril-2020>

**Florida Department of Health, COVID-19 Response:**

<https://floridahealthcovid19.gov>

**CDC:**

<https://www.cdc.gov/covid-data-tracker/index.html#demographics>

**Weekly deaths by Age:**

<https://data.cdc.gov/NCHS/Weekly-counts-of-deaths-by-jurisdiction-and-age-gr/y5bj-9g5w>