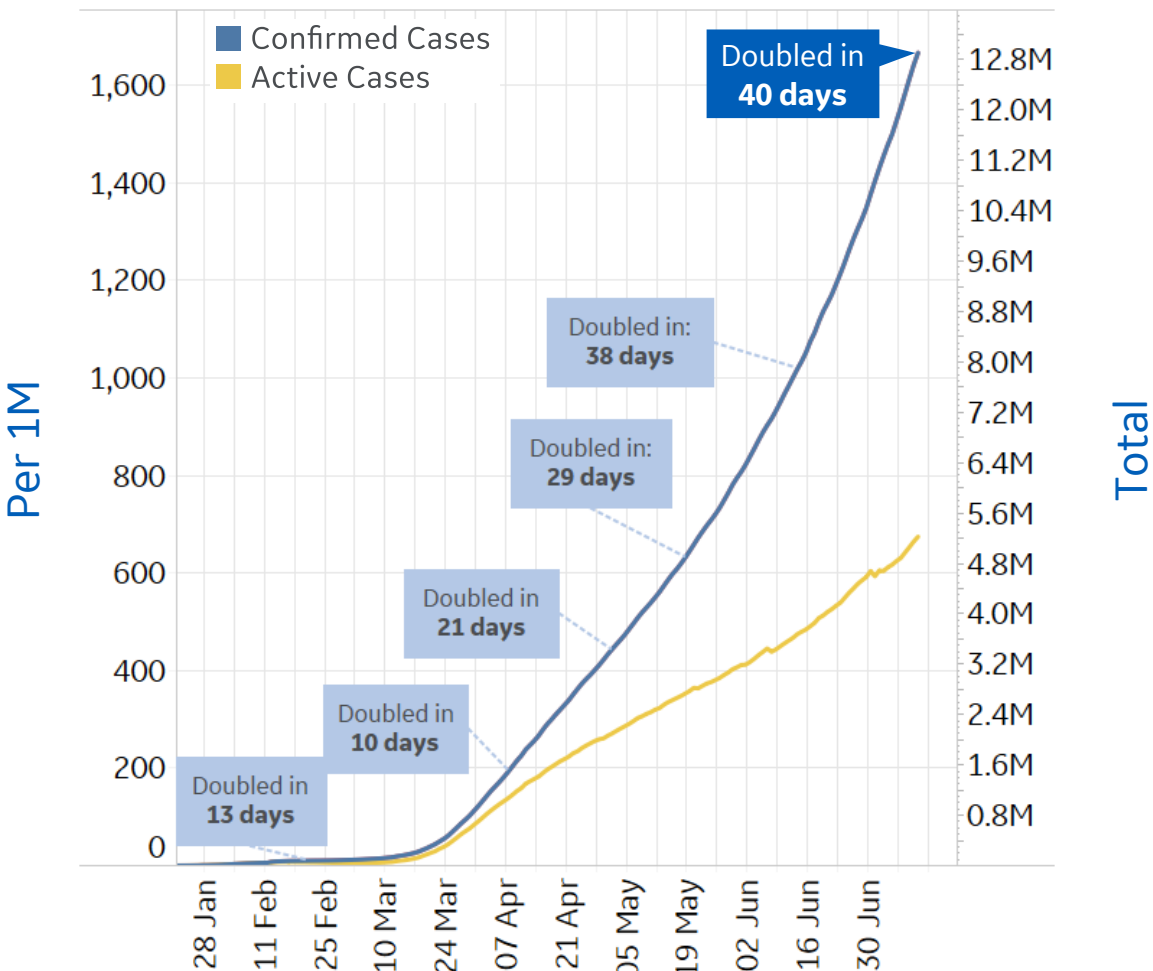




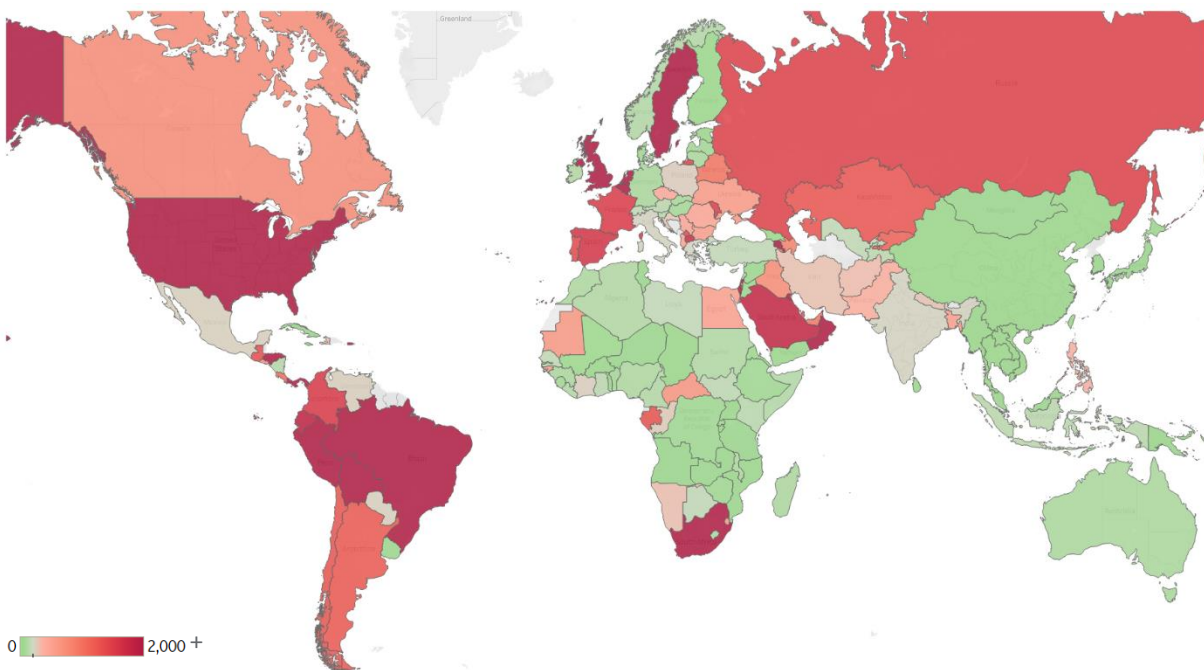
Global Confirmed & Active Cases

Trend since 22 Jan



Today per 1M

Active cases = Confirmed - Recovered - Deaths



Per 1M:	Today		Change
Active Today	674		+1%
Active	9	new	+1%
Confirmed	25	new	+2%
Deaths	1	new	+1%
Recovered	15	new	+2%



Top 50 Countries: Per 1M



1 - 25

	Active Today	Today			Total since 22 Jan		
		Confirmed	Deaths	Recovered	Total Confirmed	Total Deaths	Total Recovered
Belgium	3,083	21	0	0	5,411	844	1,484
UK	3,607	10	0	0	4,289	661	20
Spain	1,607	0	0	0	5,431	607	3,216
Sweden	6,869	0	0	0	7,416	547	0
France	1,524	0	0	0	3,187	460	1,203
US	6,536	178	1	32	9,985	408	3,040
Chile	1,264	158	5	145	16,480	365	14,851
Peru	2,952	110	6	90	9,897	360	6,585
Netherlands	2,620	6	0	0	2,990	359	11
Brazil	2,483	117	3	98	8,773	339	5,951
EU	882	5	0	4	2,972	302	1,788
Ecuador	1,844	37	1	10	3,847	286	1,716
Canada	730	5	0	5	2,897	234	1,933
Panama	5,026	302	4	202	10,576	211	5,340
Armenia	3,972	195	2	73	10,789	191	6,626
North Macedo..	1,692	65	3	59	3,893	183	2,017
Portugal	1,368	29	1	25	4,561	163	3,031
Moldova	1,505	43	0	52	4,805	159	3,140
Bolivia	2,702	85	5	44	4,128	155	1,272
Colombia	1,548	90	4	46	2,857	107	1,202
Kuwait	2,317	196	1	152	12,854	91	10,446
Dom. Rep.	2,044	131	2	43	4,105	83	1,978
Iraq	737	57	2	41	1,927	78	1,112
Honduras	2,459	51	0	6	2,836	78	299
Russia	1,470	45	1	25	4,975	78	3,428

26 - 50

	Active Today	Today			Total since 22 Jan		
		Confirmed	Deaths	Recovered	Total Confirmed	Total Deaths	Total Recovered
South Africa	2,315	203	2	121	4,658	69	2,274
Guatemala	1,335	42	3	8	1,639	68	235
Bos. and Herz.	1,079	48	1	11	2,096	67	949
Saudi Arabia	1,807	80	1	50	6,671	64	4,801
Bahrain	2,591	277	2	351	19,359	63	16,705
Kosovo	1,388	117	1	22	2,672	55	1,229
Qatar	1,287	163	0	280	35,958	51	34,620
Oman	3,850	258	2	165	10,969	50	7,069
Belarus	962	17	1	49	6,872	49	5,861
Israel	2,230	139	1	22	4,468	42	2,196
Argentina	1,231	59	1	29	2,216	41	945
El Salvador	583	44	1	19	1,491	40	869
Eq. Guinea	1,552	0	0	0	2,189	36	600
UAE	948	41	0	50	5,546	34	4,564
Ukraine	601	16	0	11	1,250	32	617
Mauritania	612	17	0	43	1,152	32	508
Azerbaijan	852	51	1	48	2,371	30	1,489
Kyrgyzstan	1,151	108	3	31	1,704	23	530
Gabon	1,299	0	0	0	2,670	21	1,350
Kazakhstan	1,282	0	6	0	3,102	20	1,801
Central Africa..	640	0	0	0	888	11	237
West Bank an..	1,149	65	1	89	1,364	8	206
Costa Rica	1,046	72	0	4	1,491	6	440
Singapore	624	30	0	44	7,856	4	7,228
Total World	674	25	1	15	1,667	73	919

Several countries are revising and updating case counts

Confirmed cases in **Belgium** increased 20% since 1 July

Sorted by total deaths / 1M
Top 50 countries selected by Active Cases / 1M
Excluded countries with population < 1M



Top 50 Countries: Raw Volume



1 - 25

		Today			Total since 22 Jan		
	Active Cases	Confirmed	Deaths	Recovered	Total Confirmed	Total Deaths	Total Recovered
US	2,163,411	59,017	428	10,750	3,304,942	135,205	1,006,326
EU	392,755	2,372	37	1,625	1,323,252	134,389	796,108
Brazil	527,738	24,831	631	20,755	1,864,681	72,100	1,264,843
UK	244,872	650	21	0	291,154	44,904	1,378
Mexico	29,839	4,482	276	5,049	299,750	35,006	234,905
Italy	13,179	234	9	349	243,061	34,954	194,928
France	99,495	0	0	0	208,015	30,007	78,513
Spain	75,129	0	0	0	253,908	28,403	150,376
India	301,609	28,732	501	18,853	878,254	23,174	553,471
Iran	24,481	2,186	194	2,327	257,303	12,829	219,993
Peru	97,345	3,616	188	2,959	326,326	11,870	217,111
Russia	214,510	6,587	130	3,614	726,036	11,318	500,208
Belgium	35,729	238	0	0	62,707	9,782	17,196
Germany	6,434	210	1	148	199,919	9,071	184,414
Canada	27,565	198	11	170	109,348	8,829	72,954
Chile	24,160	3,012	98	2,788	315,041	6,979	283,902
Netherlands	44,888	101	0	0	51,237	6,156	193
Sweden	69,372	0	0	0	74,898	5,526	0
Colombia	78,750	4,586	224	2,386	145,362	5,426	61,186
Turkey	13,115	1,012	19	1,298	212,993	5,363	194,515
Pakistan	84,442	2,753	69	5,217	251,625	5,266	161,917
Ecuador	32,540	661	16	176	67,870	5,047	30,283
China	569	46	0	31	85,117	4,641	79,907
South Africa	137,289	12,058	108	7,159	276,242	4,079	134,874
Egypt	53,793	912	89	543	82,070	3,858	24,419

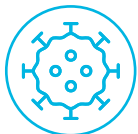
26 - 50

		Today			Total since 22 Jan		
	Active Cases	Confirmed	Deaths	Recovered	Total Confirmed	Total Deaths	Total Recovered
Indonesia	36,455	1,681	71	919	75,699	3,606	35,638
Iraq	29,632	2,312	95	1,645	77,506	3,150	44,724
Bangladesh	87,829	2,666	47	5,580	183,795	2,352	93,614
Saudi Arabia	62,898	2,779	42	1,742	232,259	2,223	167,138
Switzerland	1,315	66	0	100	32,883	1,968	29,600
Argentina	55,627	2,657	35	1,286	100,166	1,845	42,694
Bolivia	31,537	987	53	510	48,187	1,807	14,843
Portugal	13,945	291	6	252	46,512	1,660	30,907
Poland	9,172	370	3	513	37,891	1,571	27,148
Philippines	38,679	2,037	162	2,009	56,259	1,534	16,046
Ukraine	26,276	706	11	458	54,647	1,400	26,971
Afghanistan	12,225	85	16	81	34,451	1,010	21,216
Panama	21,685	1,301	16	869	45,633	909	23,039
Dom. Rep.	22,176	1,418	17	463	44,532	897	21,459
Nigeria	18,371	571	16	344	32,558	740	13,447
Belarus	9,088	165	5	461	64,932	464	55,380
Kuwait	9,894	836	4	649	54,894	390	44,610
Kazakhstan	24,064	0	111	0	58,253	375	33,814
Israel	19,300	1,206	8	194	38,670	362	19,008
UAE	9,381	401	2	492	54,854	333	45,140
Oman	19,660	1,318	9	843	56,015	257	36,098
Qatar	3,708	470	1	809	103,598	147	99,743
Bahrain	4,408	471	4	597	32,941	108	28,425
Singapore	3,650	178	0	259	45,961	26	42,285
Total World	5,224,272	192,449	3,990	111,658	12,910,357	569,128	7,116,957

Several countries are revising and updating case counts

Reported Recoveries in the **US** exceeded 1M

Sorted by total deaths
Top 50 countries selected by Total Confirmed Cases
Excluded countries with population < 1M



United States: Per 1M



1 - 26

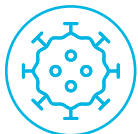
	Active Today	Today			Total since 22 Jan		
		Confirmed	Deaths	Recovered	Total Confirmed	Total Deaths	Total Recovered
New Jersey	9,700	277	1	325	20,357	1,757	8,901
New York	11,180	41	1	539	21,970	1,666	9,125
Connecticut	7,308	0	0	0	13,263	1,220	4,736
Massachuse..	1,268	42	2	0	16,162	1,206	13,688
Rhode Island	13,830	0	0	0	16,342	921	1,591
DC	12,132	65	0	20	15,369	805	2,433
Louisiana	6,102	284	3	0	16,805	736	9,967
Michigan	1,662	109	3	103	7,688	632	5,394
Illinois	2,519	170	3	53	12,236	583	9,134
Maryland	10,679	106	1	7	12,093	549	865
Pennsylvania	1,554	68	0	49	7,793	544	5,695
Delaware	5,427	63	0	54	13,149	531	7,191
Mississippi	4,325	292	6	0	12,193	420	7,448
Indiana	1,546	79	1	48	7,666	410	5,710
Arizona	14,540	349	12	74	16,825	307	1,978
Colorado	4,109	69	0	0	6,354	300	1,946
New Hamps..	456	24	1	85	4,430	288	3,687
Georgia	8,995	538	3	104	11,013	283	1,735
Minnesota	737	126	1	101	7,497	273	6,487
Ohio	1,580	121	2	57	5,614	262	3,773
New Mexico	3,796	107	2	43	7,045	259	2,991
Iowa	2,563	172	1	48	11,116	238	8,315
Virginia	6,958	104	0	5	8,280	230	1,091
Alabama	5,442	342	2	0	10,929	229	5,258
Florida	10,845	712	2	27	12,562	198	1,520
Nevada	3,027	274	0	256	8,988	193	5,768

27 - 51

	Active Today	Today			Total since 22 Jan		
		Confirmed	Deaths	Recovered	Total Confirmed	Total Deaths	Total Recovered
Washington	3,478	47	0	1	5,357	187	1,692
S. Carolina	6,746	379	2	0	11,002	187	4,070
Missouri	3,507	93	1	30	4,684	182	995
California	5,915	359	2	36	8,265	178	2,172
Nebraska	2,579	114	-1	116	10,855	147	8,129
N. Carolina	2,754	185	2	0	8,174	146	5,274
Wisconsin	1,255	291	1	170	6,260	141	4,864
Kentucky	3,009	161	1	14	4,340	140	1,191
South Dakota	989	60	2	70	8,426	123	7,314
North Dakota	888	119	0	49	5,687	114	4,685
Texas	4,380	407	3	333	9,066	112	4,574
Tennessee	3,714	353	3	163	9,073	109	5,250
Oklahoma	1,094	115	0	88	5,114	107	3,913
Arkansas	2,139	518	3	314	9,400	106	7,155
Kansas	2,540	57	0	78	6,484	101	3,843
Vermont	279	21	0	0	2,077	90	1,708
Maine	321	14	1	16	2,633	85	2,227
Utah	3,732	393	2	325	9,197	67	5,397
Idaho	4,079	323	1	27	5,878	57	1,743
Oregon	2,041	94	0	0	2,810	55	713
West Virginia	733	74	1	20	2,347	54	1,561
Wyoming	829	40	0	59	3,217	36	2,352
Montana	808	76	0	1	1,645	27	809
Alaska	1,158	213	0	37	2,022	23	841
Hawaii	218	30	0	18	848	13	616

Confirmed cases in **Louisiana** increased 30% since 1 July

Sorted by total deaths / 1M



United States: Raw Volume



1 - 26

	Active Cases	Today			Total since 22 Jan		
		Confirmed	Deaths	Recovered	Total Confirmed	Total Deaths	Total Recovered
New York	217,494	798	12	10,485	427,402	32,400	177,508
New Jersey	86,157	2,459	8	2,886	180,816	15,603	79,056
Massachuse..	8,741	288	14	0	111,398	8,310	94,347
Illinois	31,915	2,149	43	674	155,048	7,388	115,745
California	233,702	14,170	89	1,406	326,573	7,047	85,824
Pennsylvania	19,899	872	6	626	99,767	6,958	72,910
Michigan	16,595	1,091	29	1,026	76,776	6,314	53,867
Connecticut	26,054	0	0	0	47,287	4,348	16,885
Florida	232,919	15,300	45	580	269,811	4,242	32,650
Louisiana	28,367	1,319	13	0	78,122	3,421	46,334
Maryland	64,560	642	9	40	73,109	3,319	5,230
Texas	126,997	11,800	91	9,642	262,876	3,241	132,638
Ohio	18,464	1,414	26	666	65,628	3,063	44,101
Georgia	95,505	5,715	36	1,105	116,926	3,001	18,420
Indiana	10,411	533	4	321	51,612	2,760	38,441
Arizona	105,836	2,537	86	541	122,467	2,237	14,394
Virginia	59,394	888	4	39	70,670	1,966	9,310
Colorado	23,661	400	1	0	36,591	1,725	11,205
Minnesota	4,159	710	3	570	42,281	1,540	36,582
N. Carolina	28,879	1,937	26	0	85,730	1,533	55,318
Washington	26,482	355	0	11	40,790	1,424	12,884
Mississippi	12,871	868	19	0	36,287	1,249	22,167
Alabama	26,683	1,677	8	0	53,587	1,121	25,783
Missouri	21,523	568	8	184	28,745	1,117	6,105
Rhode Island	14,651	0	0	0	17,312	976	1,685
S. Carolina	34,731	1,949	10	0	56,648	961	20,956

27 - 51

	Active Cases	Today			Total since 22 Jan		
		Confirmed	Deaths	Recovered	Total Confirmed	Total Deaths	Total Recovered
Wisconsin	7,309	1,695	7	989	36,448	821	28,318
Iowa	8,087	542	2	152	35,071	750	26,234
Tennessee	25,364	2,414	18	1,115	61,960	741	35,855
Kentucky	13,442	719	5	64	19,389	625	5,322
Nevada	9,324	845	1	788	27,683	593	17,766
DC	8,562	46	0	14	10,847	568	1,717
New Mexico	7,959	224	4	90	14,773	543	6,271
Delaware	5,285	61	0	53	12,804	517	7,002
Oklahoma	4,328	456	1	349	20,235	422	15,485
New Hamps..	620	33	1	116	6,024	391	5,013
Arkansas	6,455	1,564	8	949	28,367	321	21,591
Kansas	7,399	167	1	226	18,890	295	11,196
Nebraska	4,989	221	-1	225	20,998	285	15,724
Oregon	8,610	397	0	0	11,851	232	3,009
Utah	11,966	1,261	8	1,042	29,484	215	17,303
Maine	431	19	2	22	3,539	114	2,994
South Dakota	875	53	2	62	7,454	109	6,470
Idaho	7,289	577	1	48	10,505	102	3,114
West Virginia	1,313	133	1	35	4,207	96	2,798
North Dakota	677	91	0	37	4,334	87	3,570
Vermont	174	13	0	0	1,296	56	1,066
Montana	864	81	0	1	1,758	29	865
Wyoming	480	23	0	34	1,862	21	1,361
Hawaii	309	42	0	25	1,200	19	872
Alaska	847	156	0	27	1,479	17	615

51% of today's confirmed cases in the US are in **California, Florida** and **Texas**

Sorted by volume of total deaths

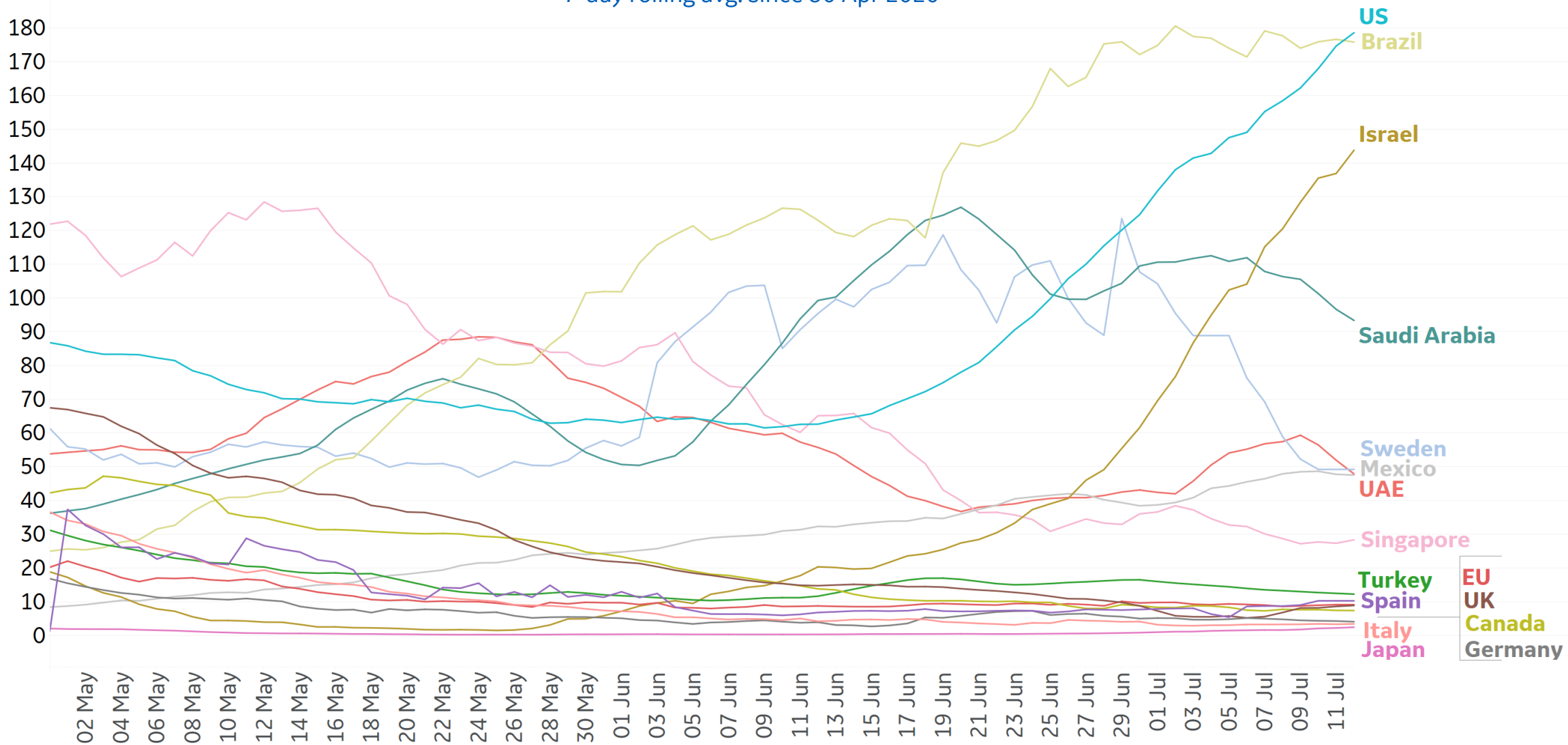


New Confirmed Cases in Select Countries

Updated 13 July 2020, 3:30 GMT

Daily New Confirmed Cases / 1M

7-day rolling avg. since 30 Apr 2020

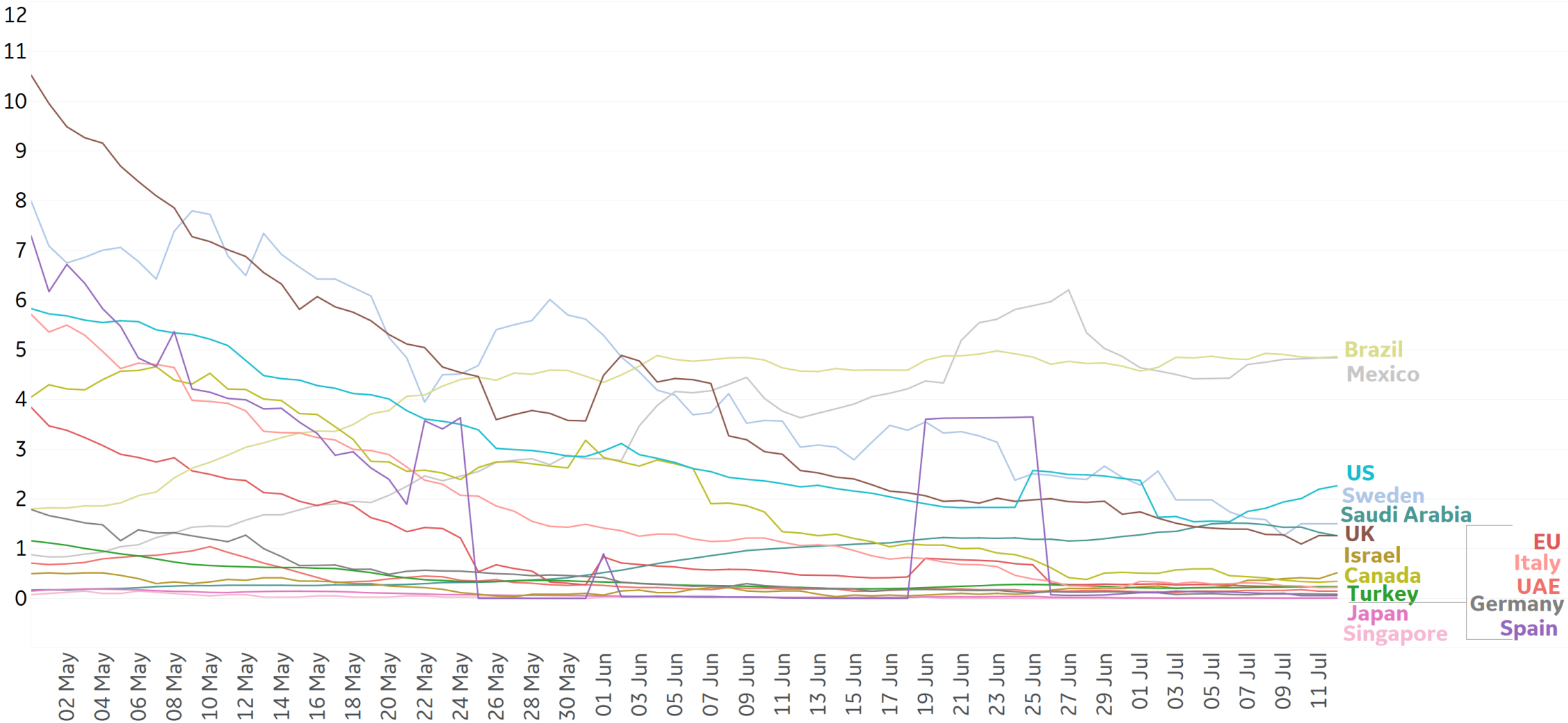




New Deaths in Select Countries

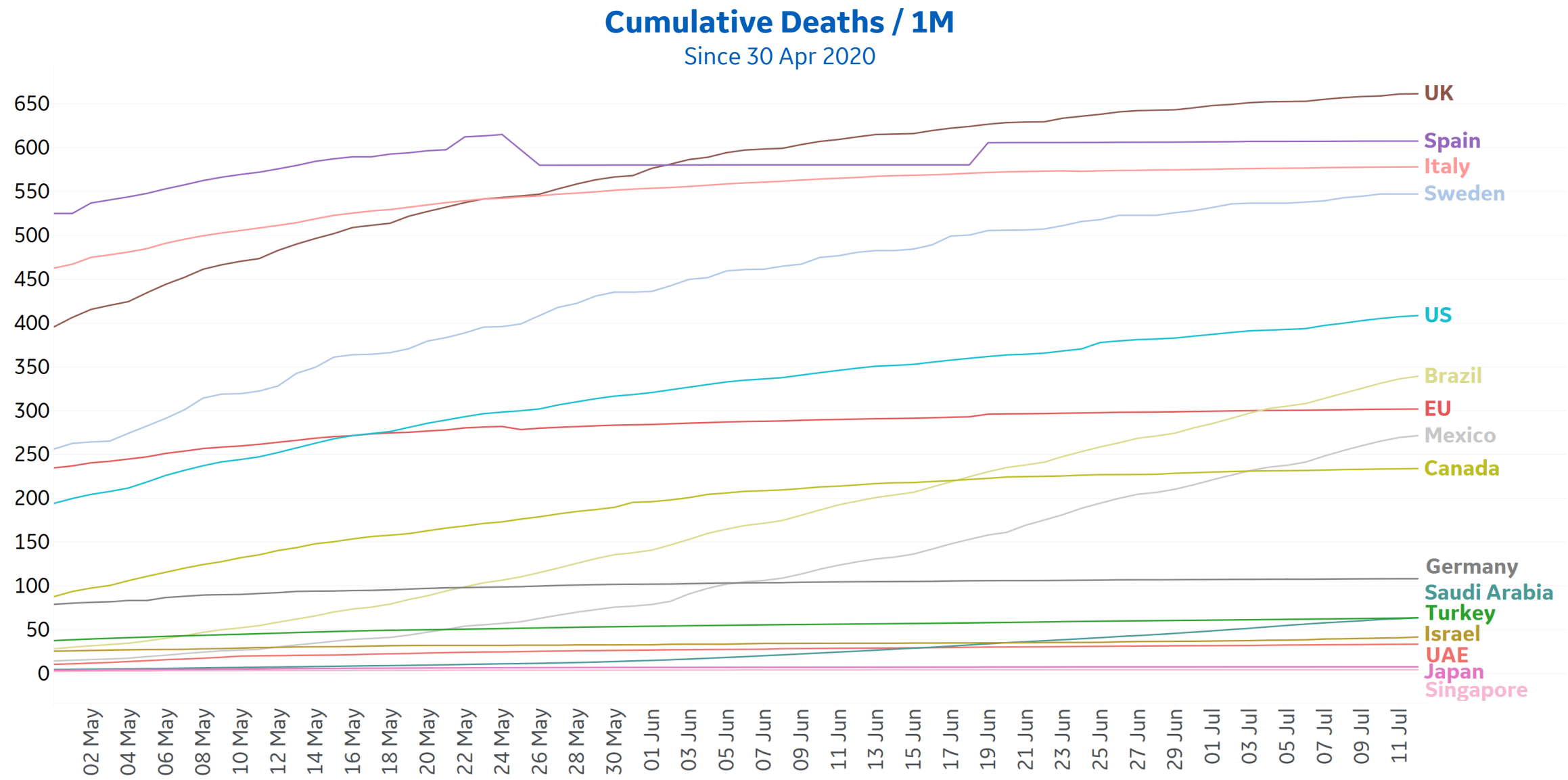
Daily New Deaths / 1M

7-day rolling avg. since 30 Apr 2020





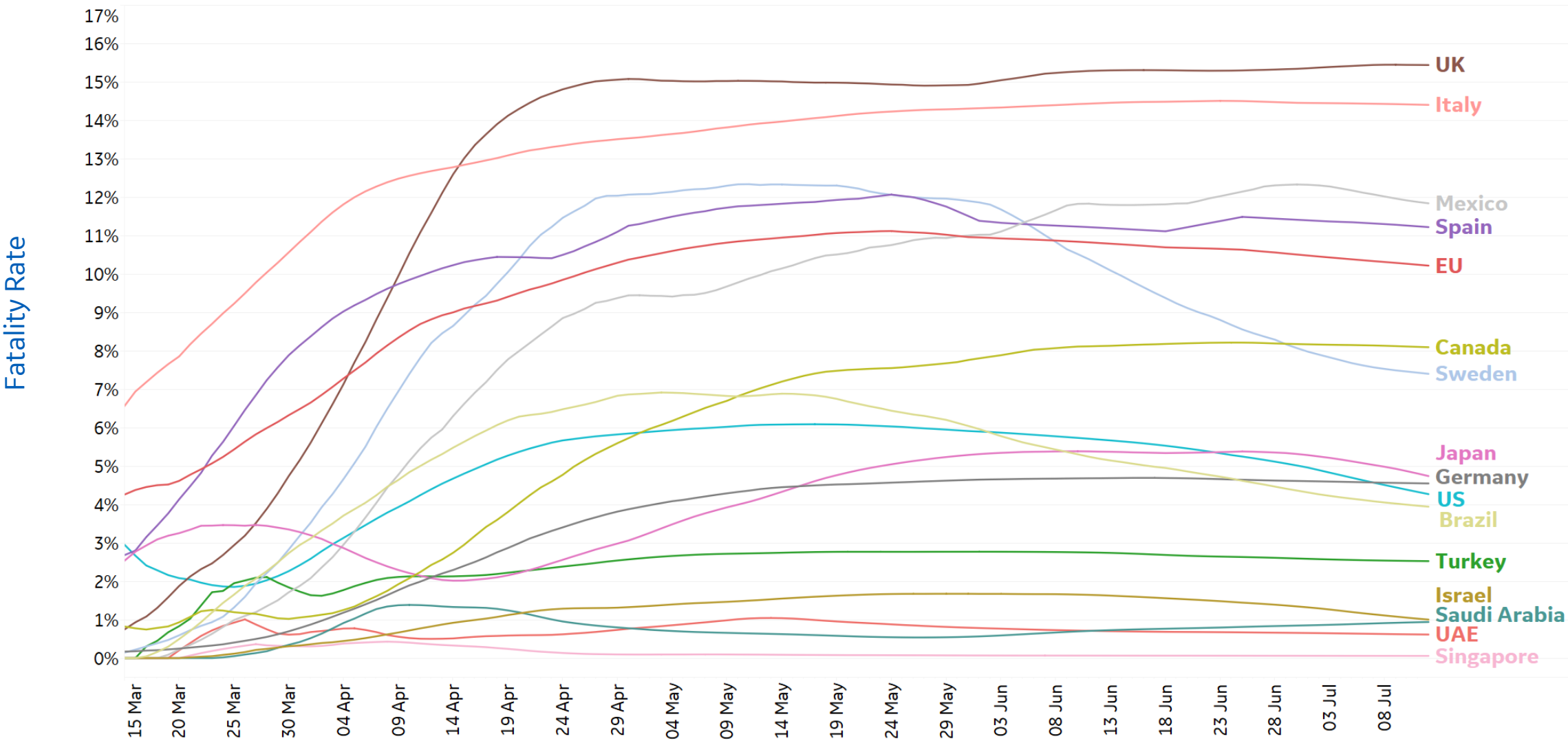
Cumulative Deaths in Select Countries





Fatality Rate in Select Countries

Deaths / Confirmed Cases Since 15 Mar 2020



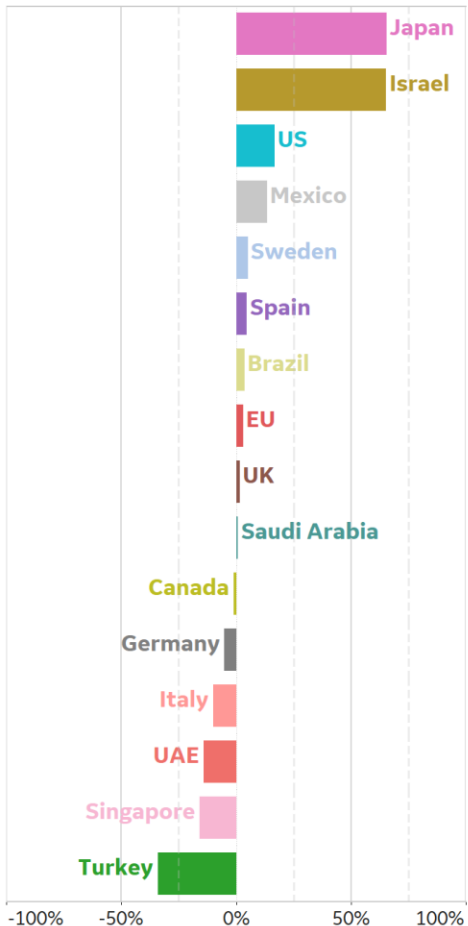


% Change in Case Volume in Select Countries

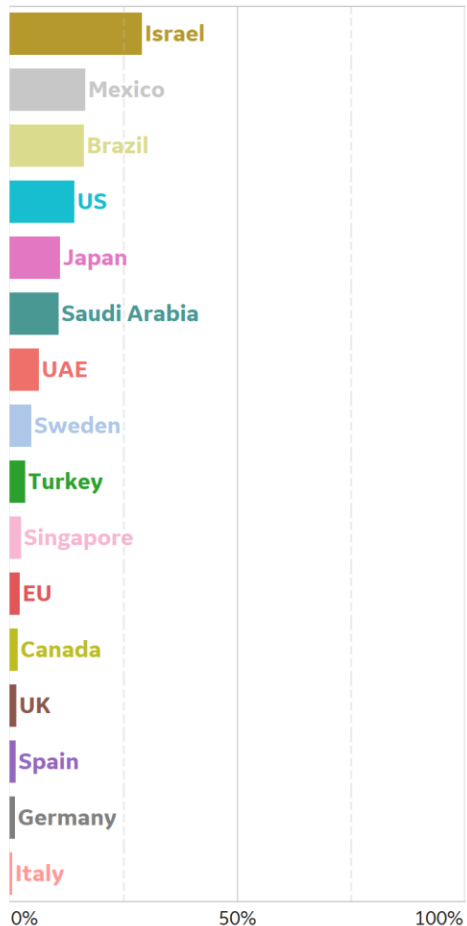


Over Previous 7 days

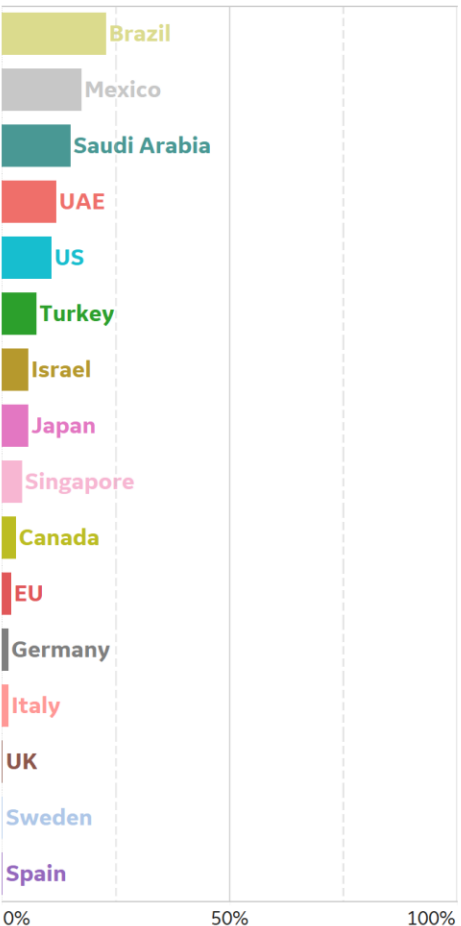
Active Cases



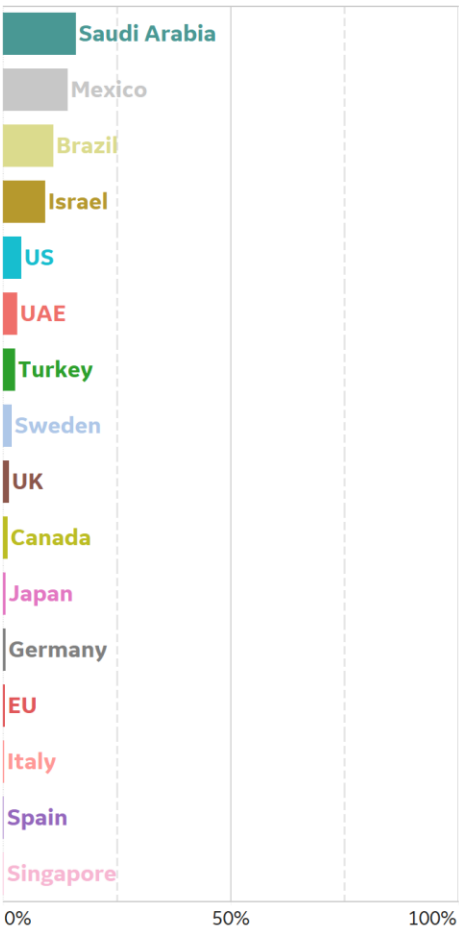
Confirmed Cases



Reported Recoveries



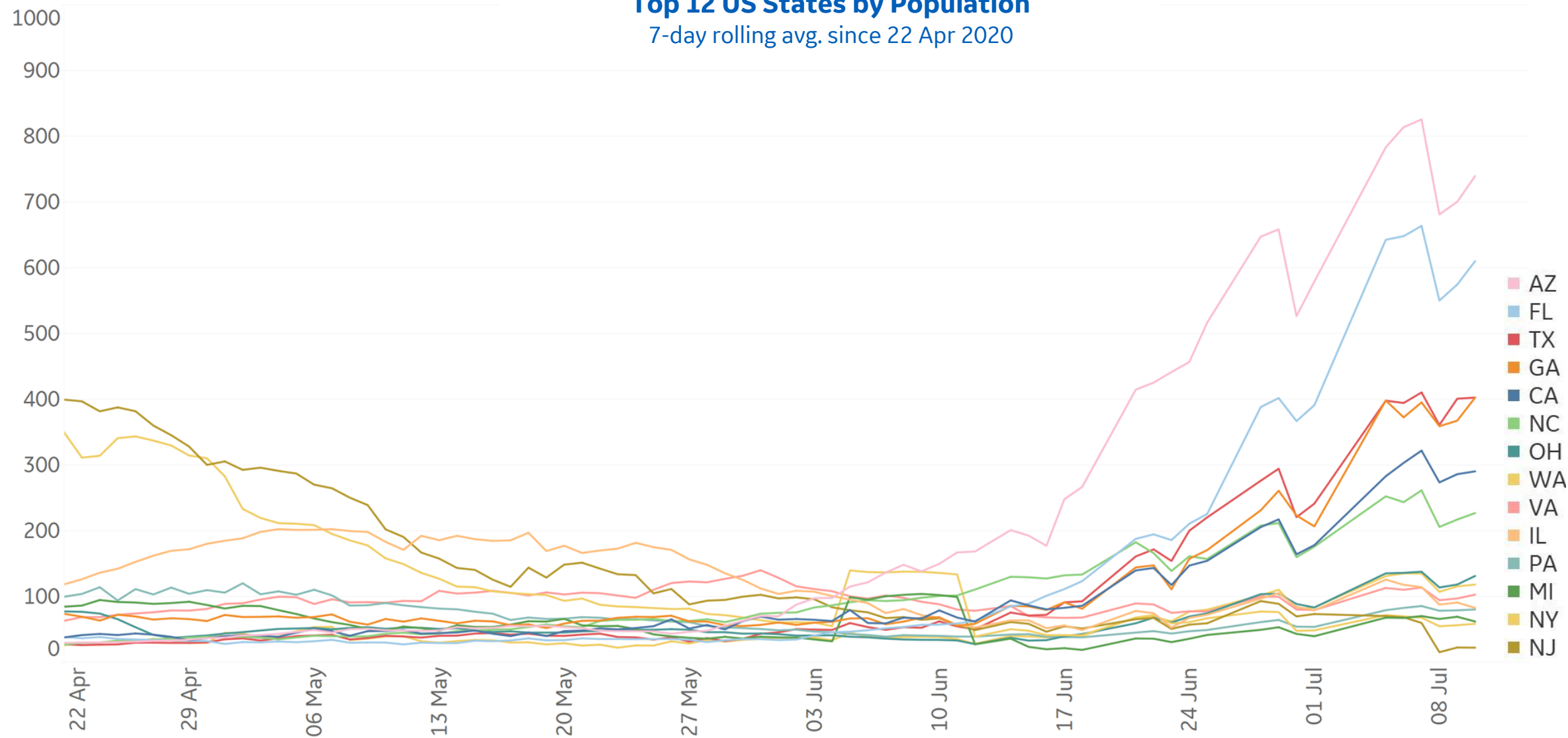
Reported Deaths





Feature: New Confirmed Cases in US States

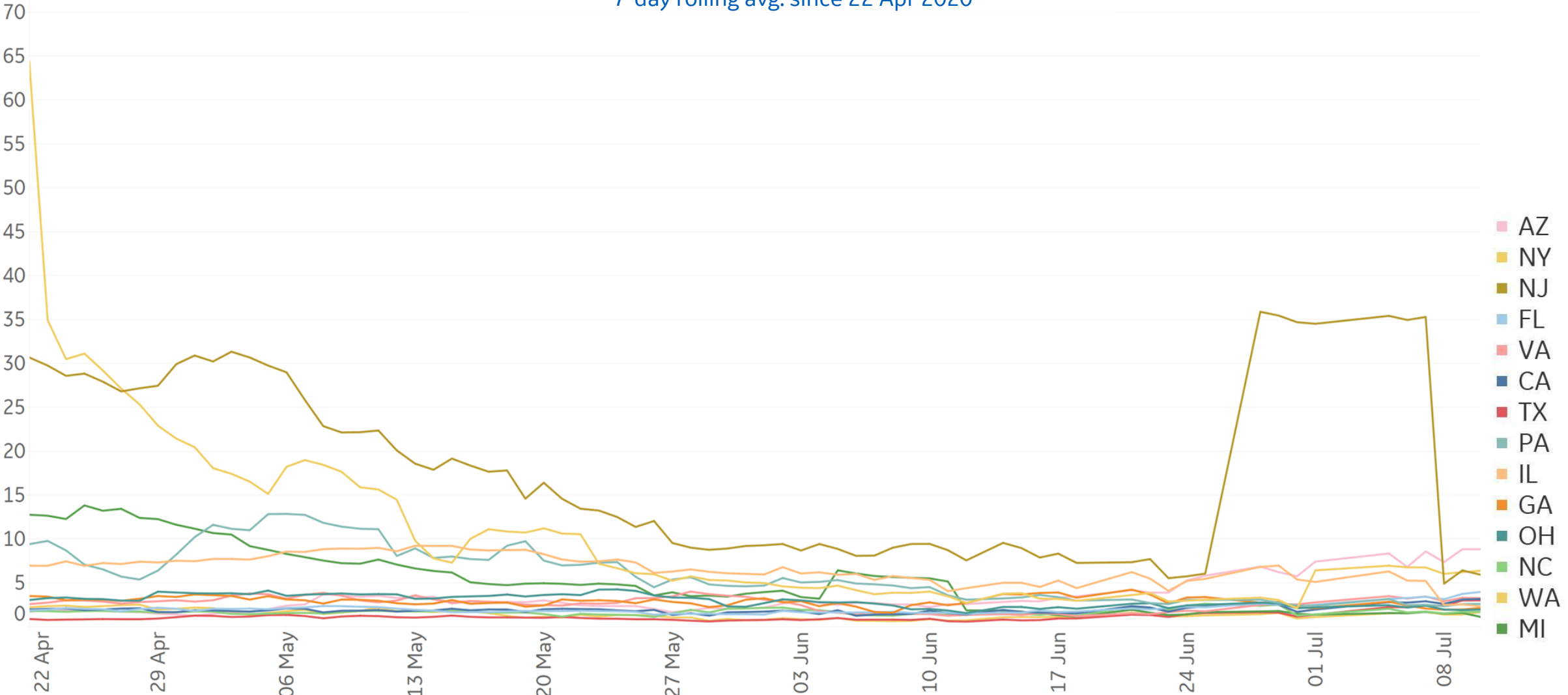
Daily New Confirmed Cases / 1M
Top 12 US States by Population
7-day rolling avg. since 22 Apr 2020





Feature: New Deaths in US States

Daily New Deaths / 1M
Top 12 US States by Population
7-day rolling avg. since 22 Apr 2020

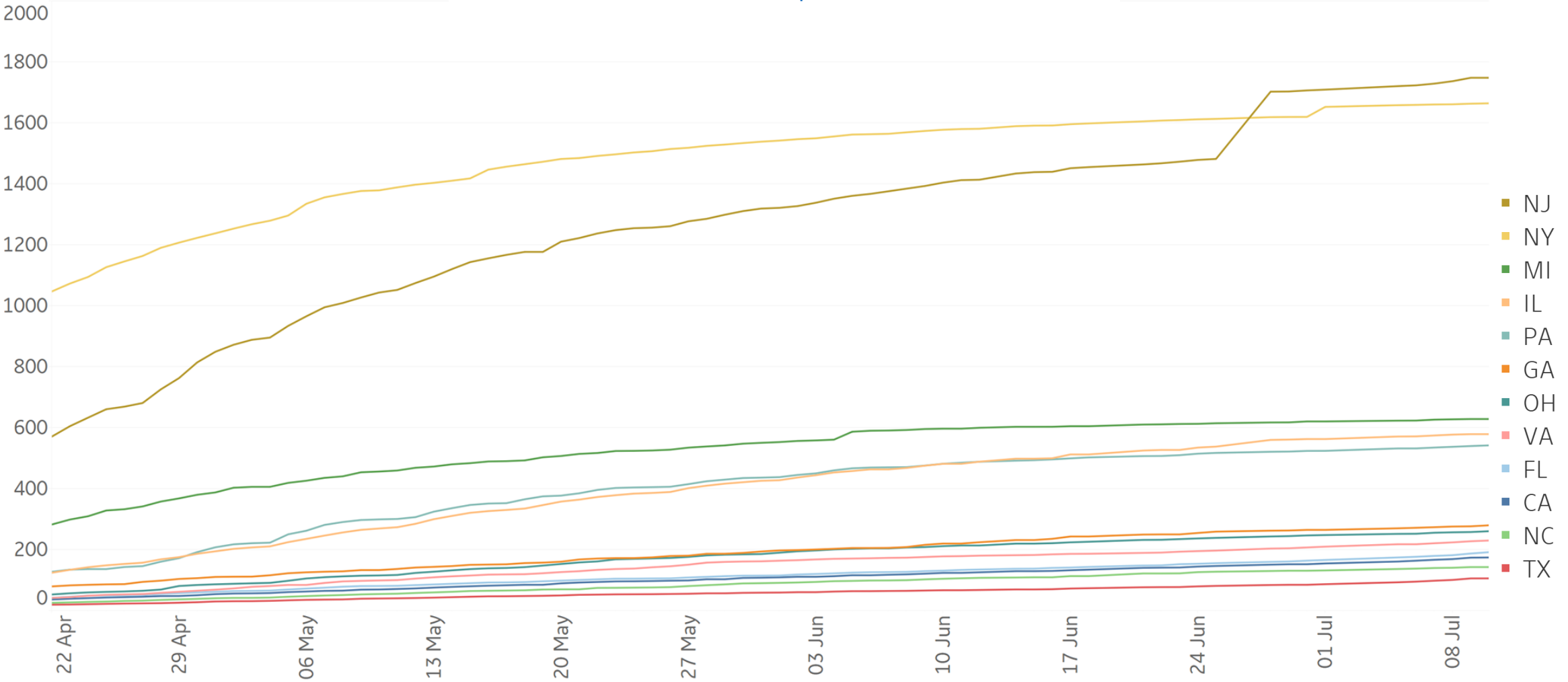


*Jump in daily new deaths / 1M from 26 June to 8 July due to data gaps



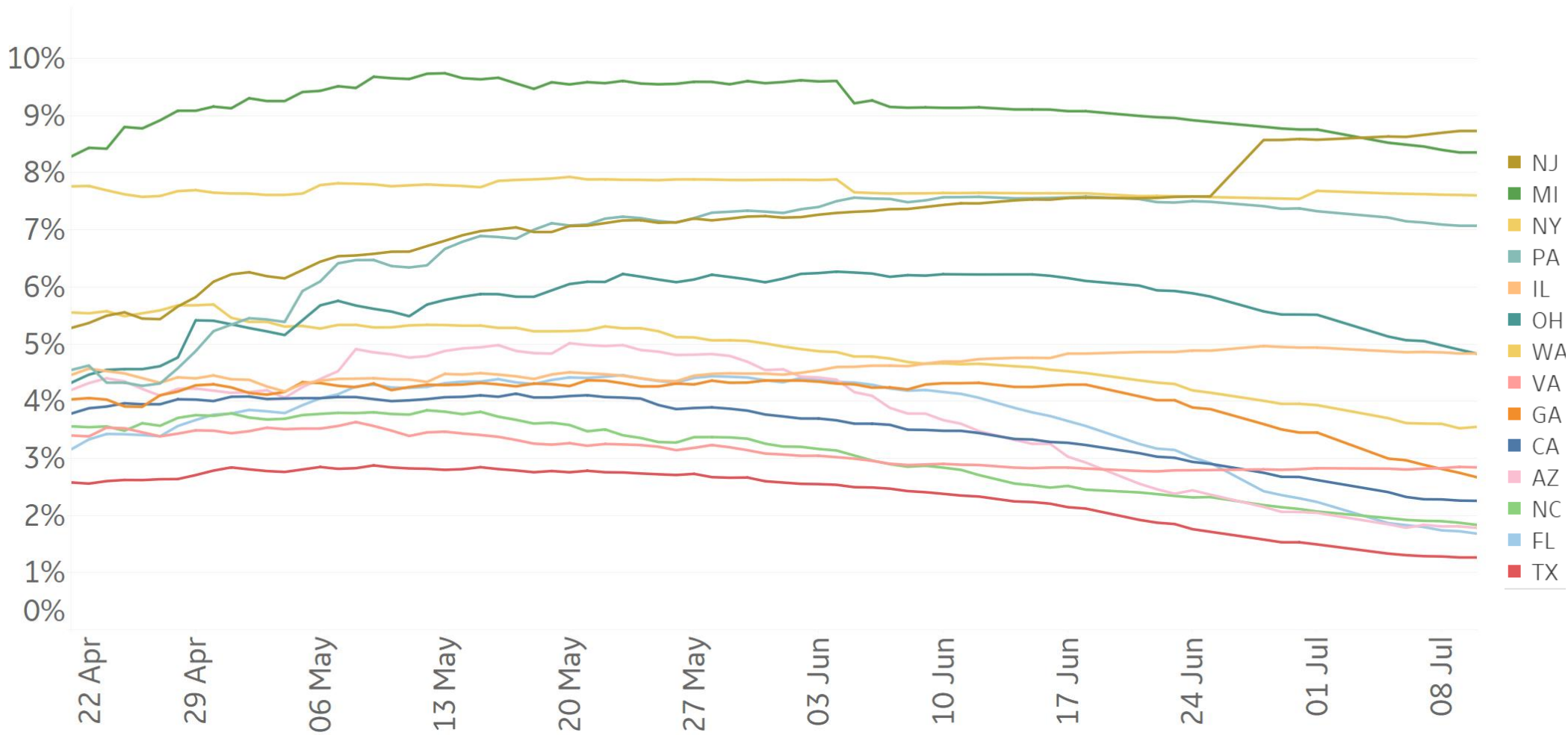
Feature: Cumulative Deaths in US States

Cumulative Deaths / 1M
Top 12 US States by Population
Since 22 Apr 2020





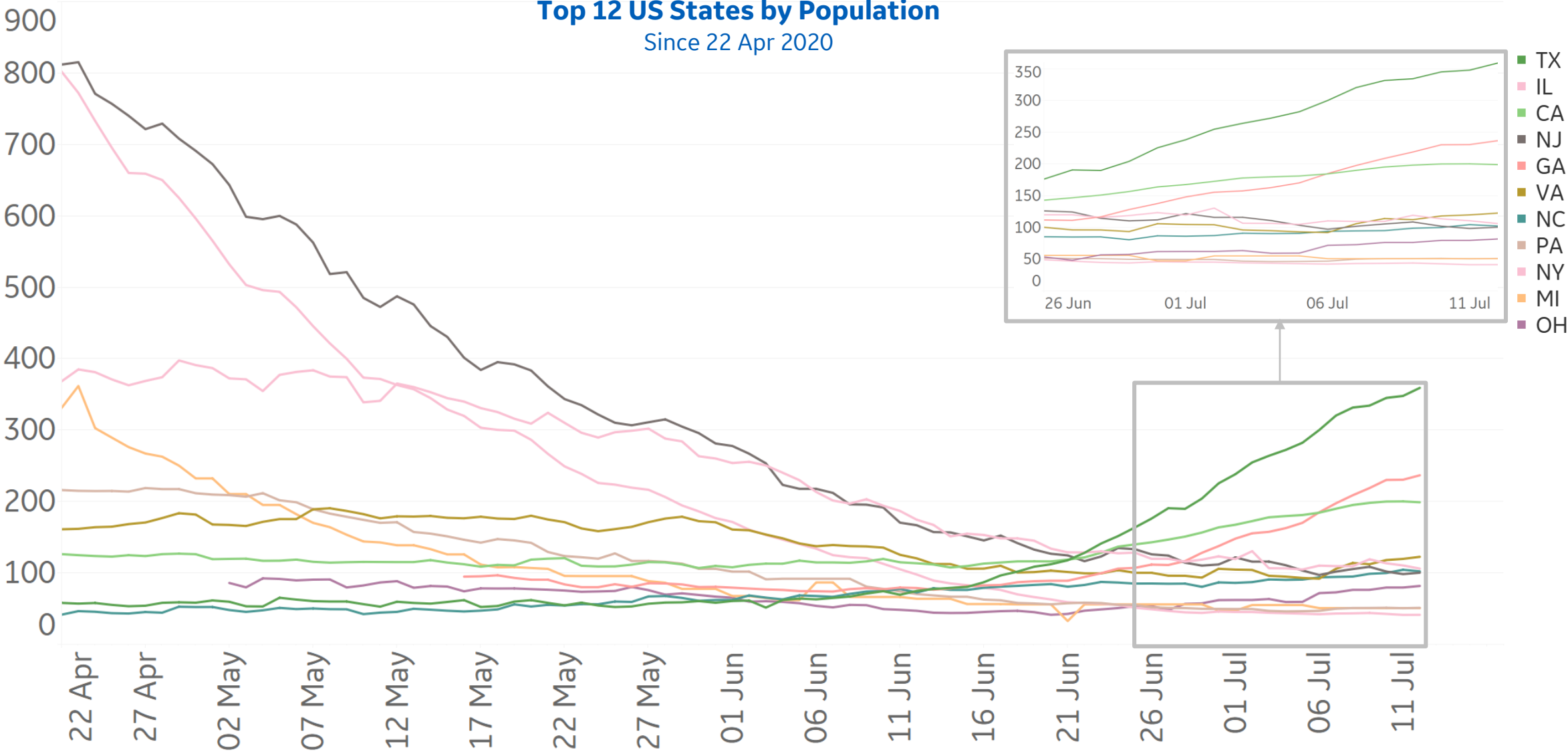
Fatality Rate





Feature: Current Hospitalizations in US States

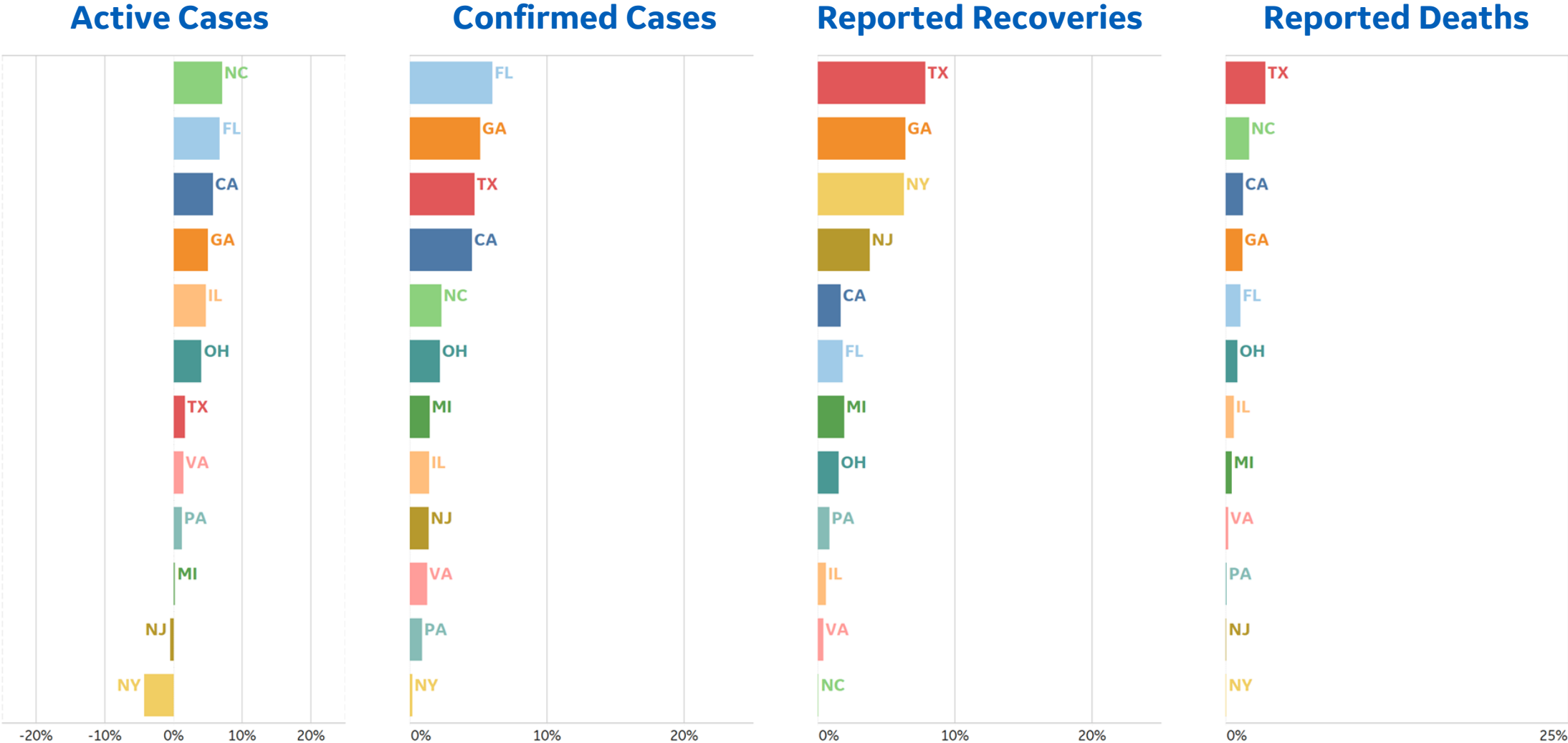
Current Hospitalizations / 1M
Top 12 US States by Population
Since 22 Apr 2020





Feature: % Change in Case Volume in US States

Over Previous 7 days
Top 12 US States by Population





Per 1M in Region

	Today	Change
Active Cases	957	+0.5%
Confirmed	20 new	+1%
Deaths	1 new	+0.2%
Recovered	15 new	+1%

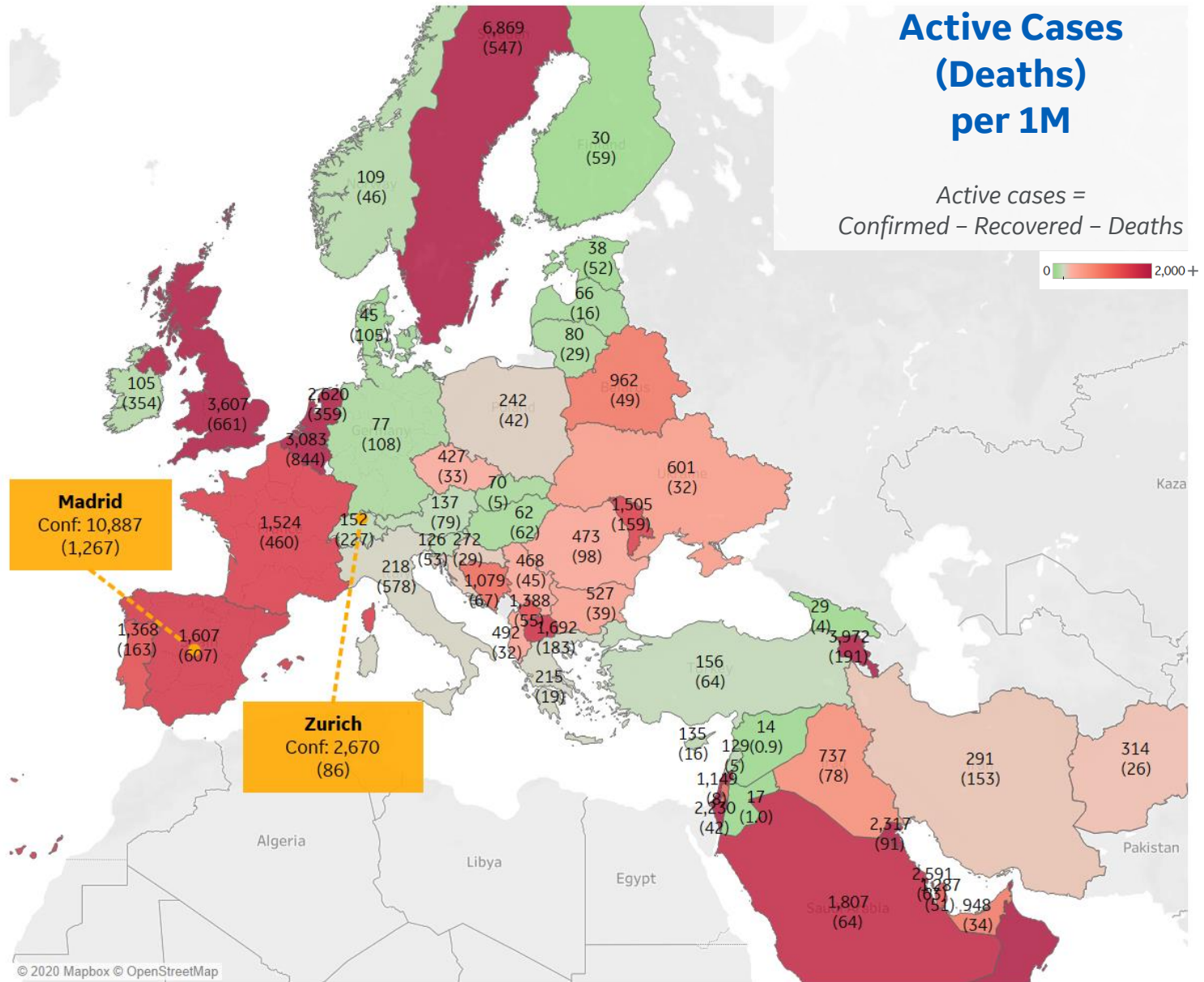
Most Active Cases per 1M

Sweden	6,869
Armenia	3,972
Oman	3,850
UK	3,607
Belgium	3,083
Netherlands	2,620
Bahrain	2,591
Kuwait	2,317
Israel	2,230
Saudi Arabia	1,807

* Excludes regions with population < 1M

Active Cases (Deaths) per 1M

Active cases =
Confirmed - Recovered - Deaths





Per 1M in Region

	Today	Change
Active Cases	3,370	+0.3%
Confirmed	9 new	+0.2%
Deaths	0.3 new	+0.05%
Recovered	0 new	+0%

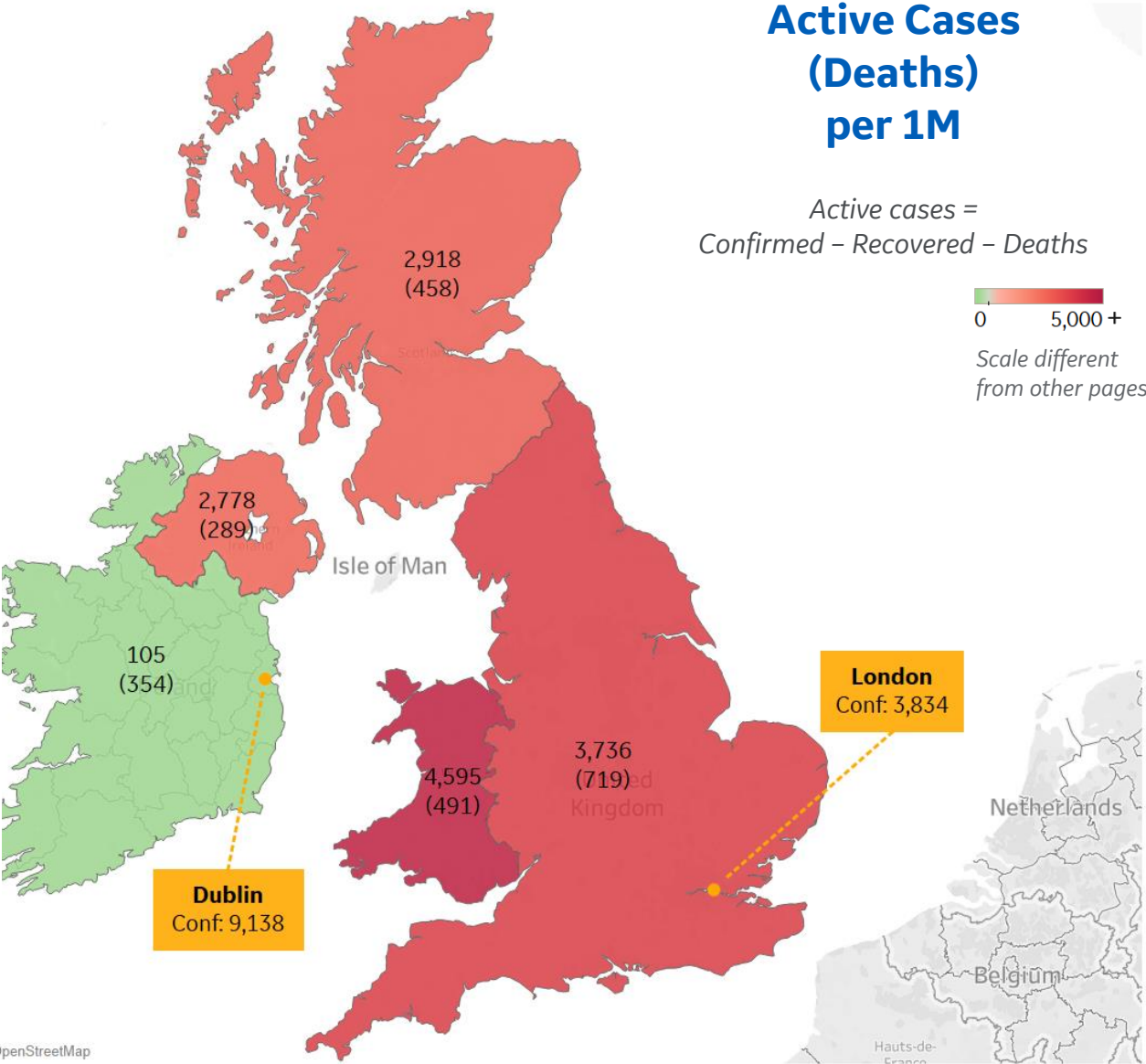
Most Active Cases per 1M

Wales	4,595
England	3,736
Scotland	2,918
Northern Ireland	2,778
Ireland	105

Active Cases (Deaths) per 1M

Active cases =
Confirmed – Recovered – Deaths

0 5,000 +
Scale different
from other pages





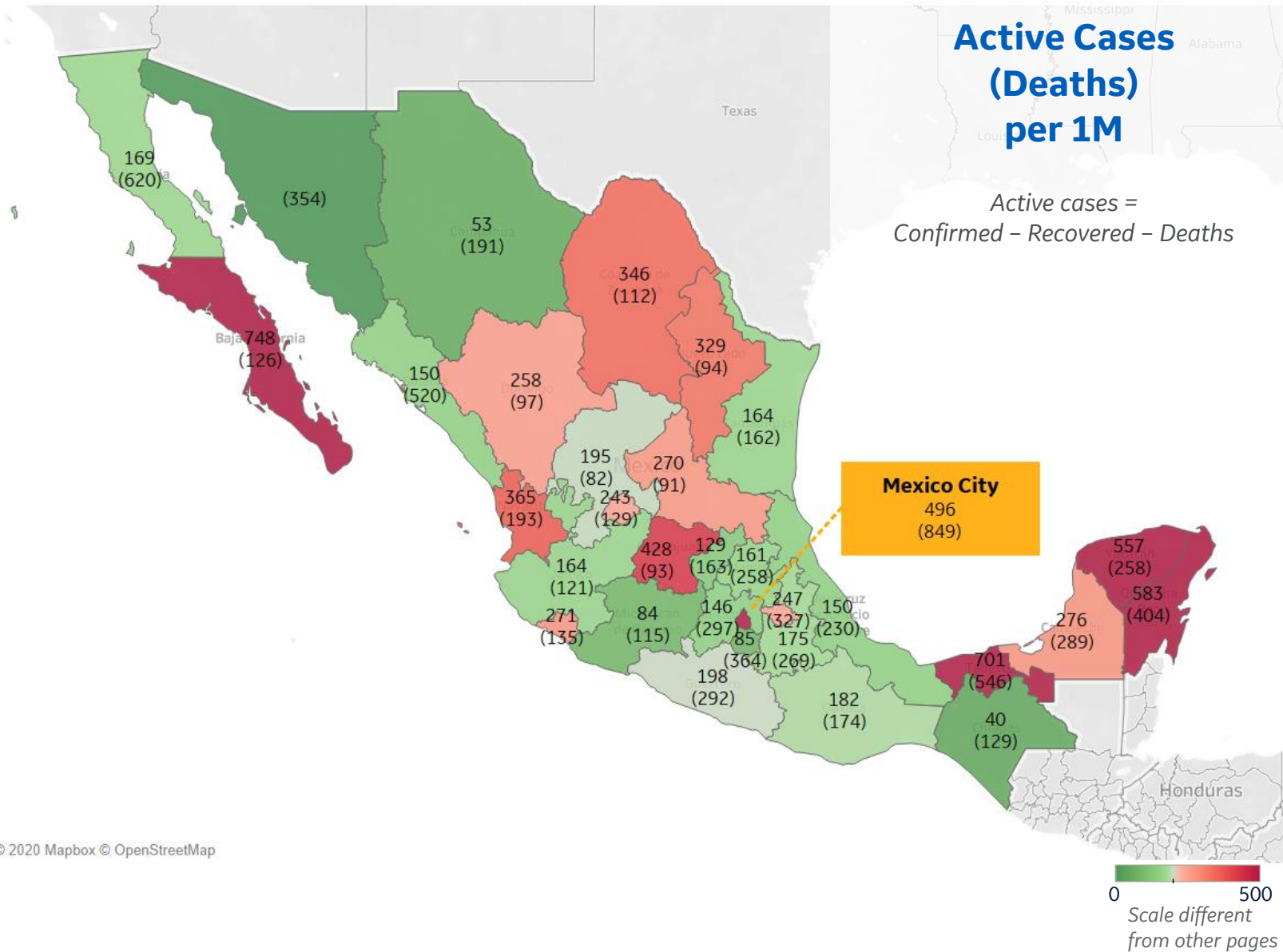
Mexico

Per 1M in Region

	Today	Change
Active Cases	231	-3%
Confirmed	35 new	+2%
Deaths	2 new	+1%
Recovered	39 new	+2%

Most Active Cases per 1M

Baja California Sur	748
Tabasco	701
Quintana Roo	583
Yucatan	557
Distrito Federal	496
Guanajuato	428
Nayarit	365
Coahuila	346
Nuevo Leon	329
Campeche	276



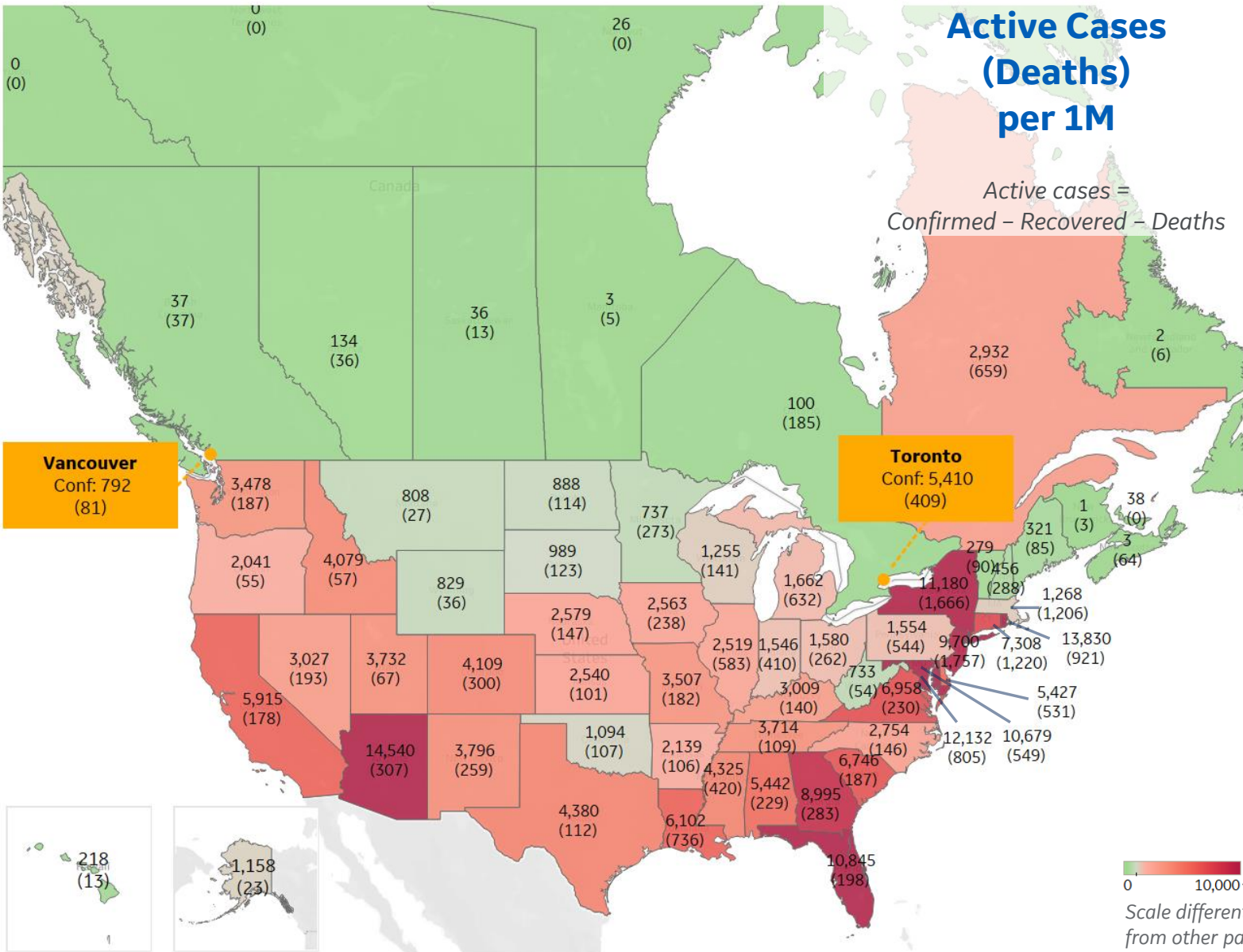


Per 1M in Region

	Today	Change
Active Cases	5,942	+2%
Confirmed	161 new	+2%
Deaths	1 new	+0.3%
Recovered	30 new	+1%

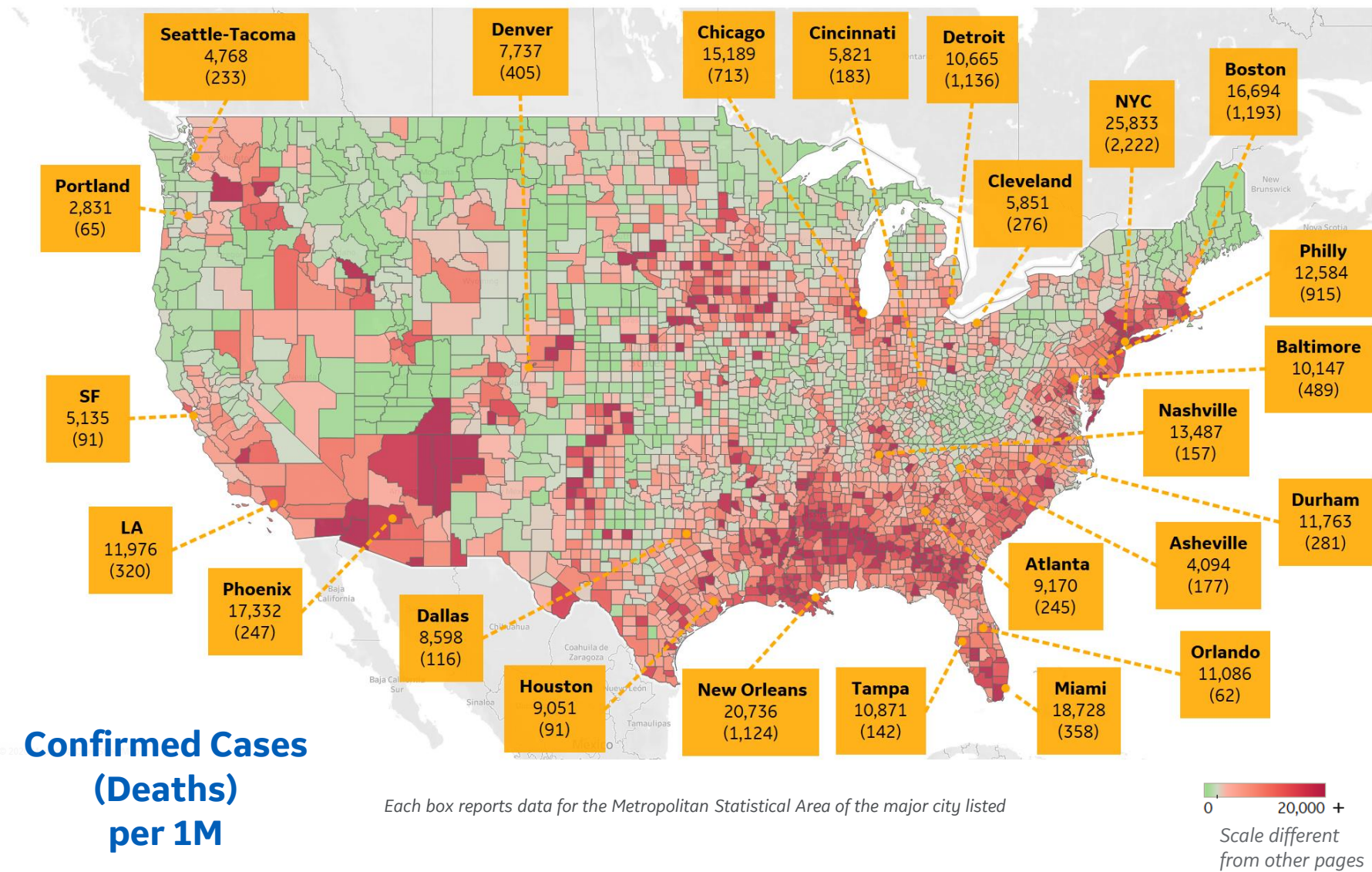
Most Active Cases per 1M

Arizona	14,540
Rhode Island	13,830
DC	12,132
New York	11,180
Florida	10,845
Maryland	10,679
New Jersey	9,700
Georgia	8,995
Connecticut	7,308
Virginia	6,958





US by County & Metro, Total to Date



Top 10 Northeast Counties

Total Confirmed Cases / 1M

Rockland County, NY	42,101
Westchester County, NY	36,482
Passaic County, NJ	34,004
Nassau County, NY	31,179
Union County, NJ	29,660
Suffolk County, NY	28,463
Hudson County, NJ	28,437
Orange County, NY	28,147
New York City*	26,275
Suffolk County, MA	25,253

Top 10 Other US Counties

Total Confirmed Cases / 1M

Yakima County, WA	32,375
Jefferson Parish, LA	25,665
Miami-Dade County, FL	23,719
Orleans Parish, LA	22,210
Prince George's County, MD	21,679
Davidson County, TN	19,173
Cook County, IL	18,554
Prince William County, VA	16,603
District of Columbia, DC	15,369
Kane County, IL	15,227

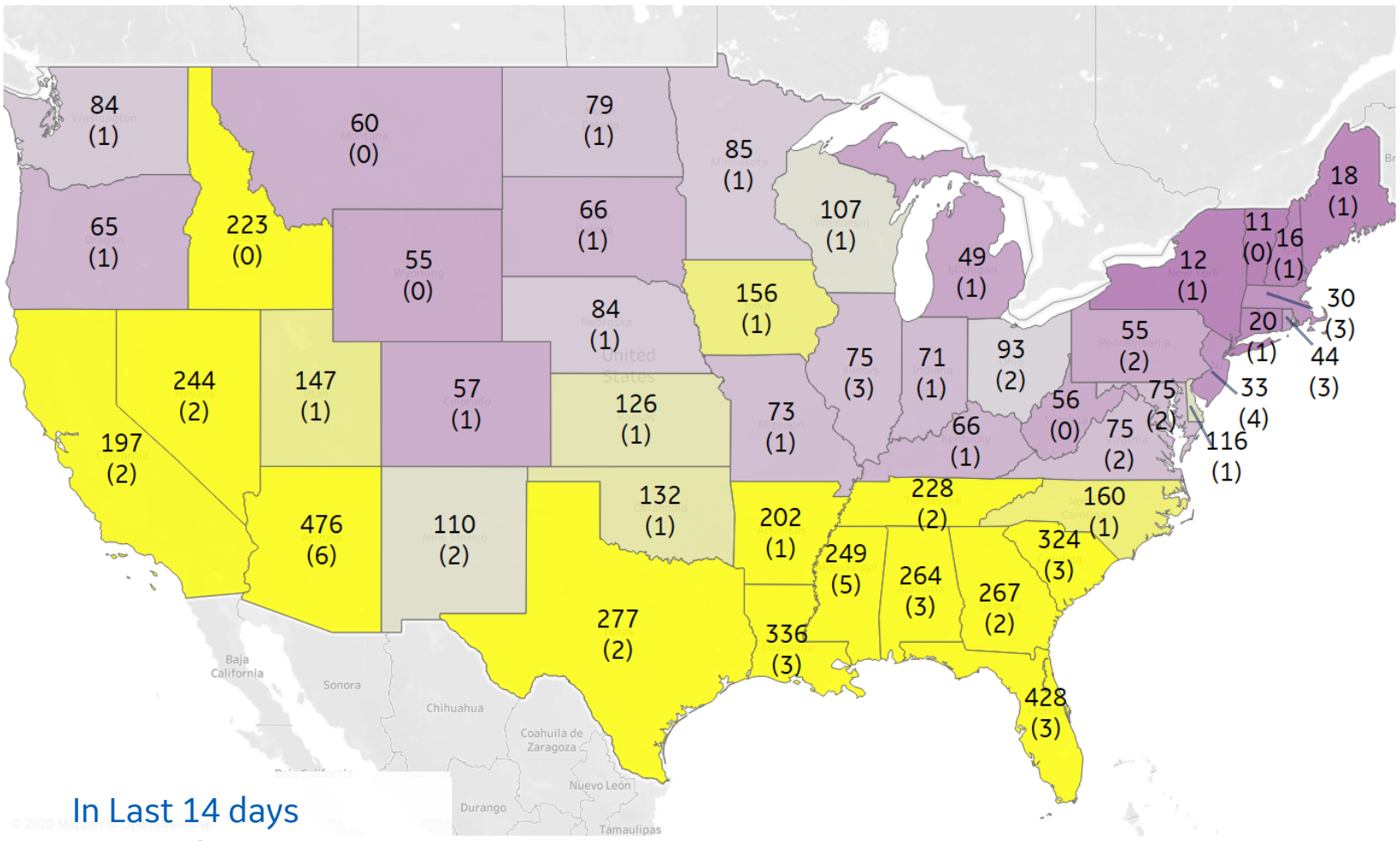
Note: Includes counties ≥ 250K population
* New York City counties aggregated into one reporting area



US, New in Last 14 days

Updated 13 July 2020, 3:30 GMT

23



Top 10 by New Confirmed

Avg New Confirmed Cases / 1M

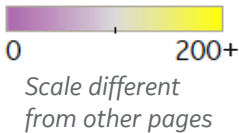
Arizona	476
Florida	428
Louisiana	336
South Carolina	324
Texas	277
Georgia	267
Alabama	264
Mississippi	249
Nevada	244
Tennessee	228

Top 10 by New Deaths

Avg New Deaths / 1M

Arizona	6
Mississippi	5
New Jersey	4
Alabama	3
Florida	3
Illinois	3
Louisiana	3
Massachusetts	3
Rhode Island	3
South Carolina	3

In Last 14 days
Avg New Confirmed Cases
(Avg New Deaths)
per 1M





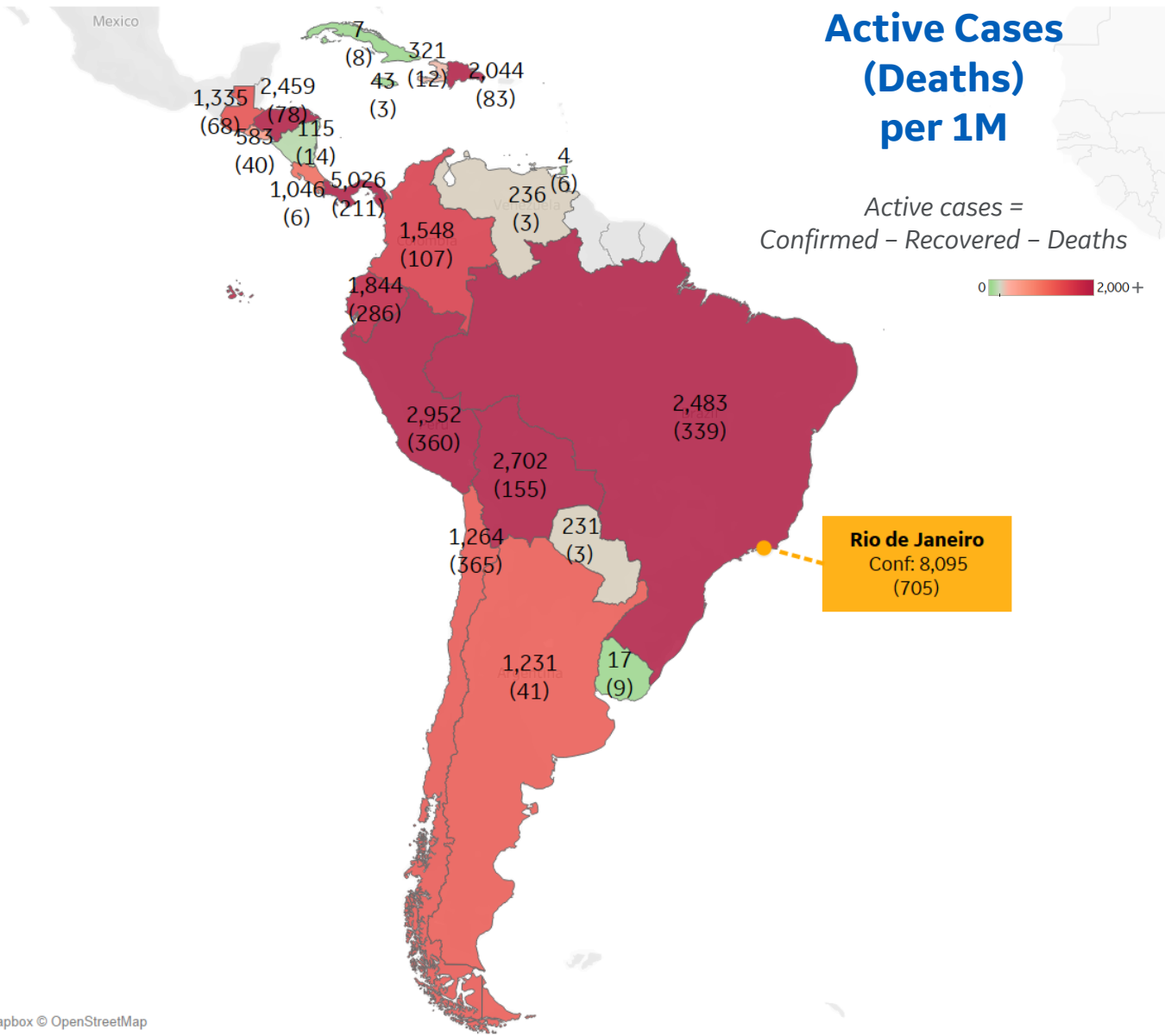
Per 1M in Region

	Today	Change
Active Cases	1,849	+1%
Confirmed	87 new	+2%
Deaths	3 new	+1%
Recovered	63 new	+2%

Most Active Cases per 1M

Panama	5,026
Peru	2,952
Bolivia	2,702
Brazil	2,483
Honduras	2,459
Dom. Rep.	2,044
Ecuador	1,844
Colombia	1,548
Guatemala	1,335
Chile	1,264

* Excludes regions with population < 1M





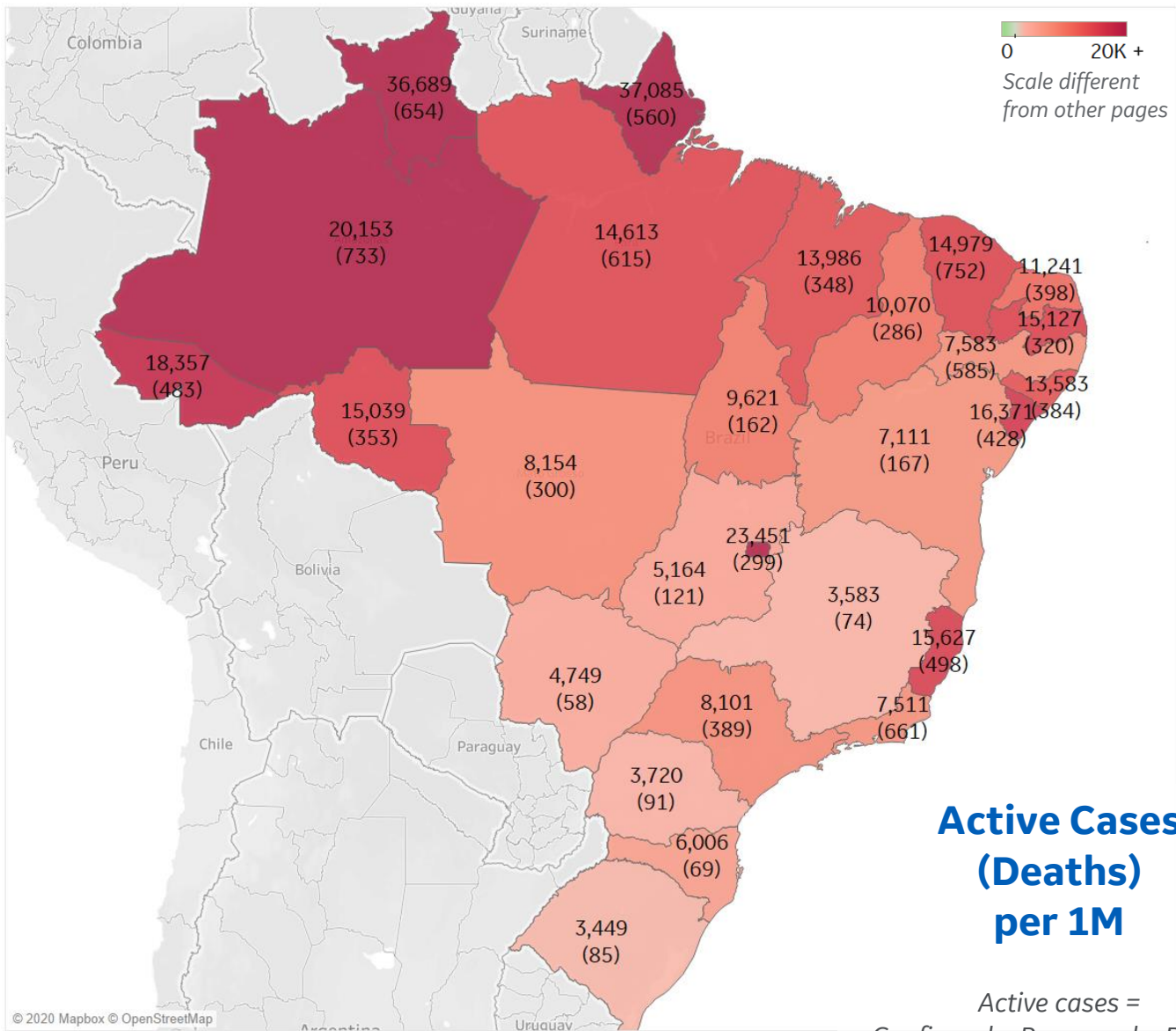
Per 1M in Region

	Today	Change
Active Cases	2,483	-3%
Confirmed	117 new	+1%
Deaths	3 new	+1%
Recovered	98 new	+2%

Most Active Cases per 1M

Distrito Federal	23,451
Amazonas	20,153
Sergipe	16,371
Espírito Santo	15,627
Paraíba	15,127
Rondônia	15,039
Ceará	14,979
Pará	14,613
Maranhão	13,986
Alagoas	13,583

* Excludes regions with population < 1M





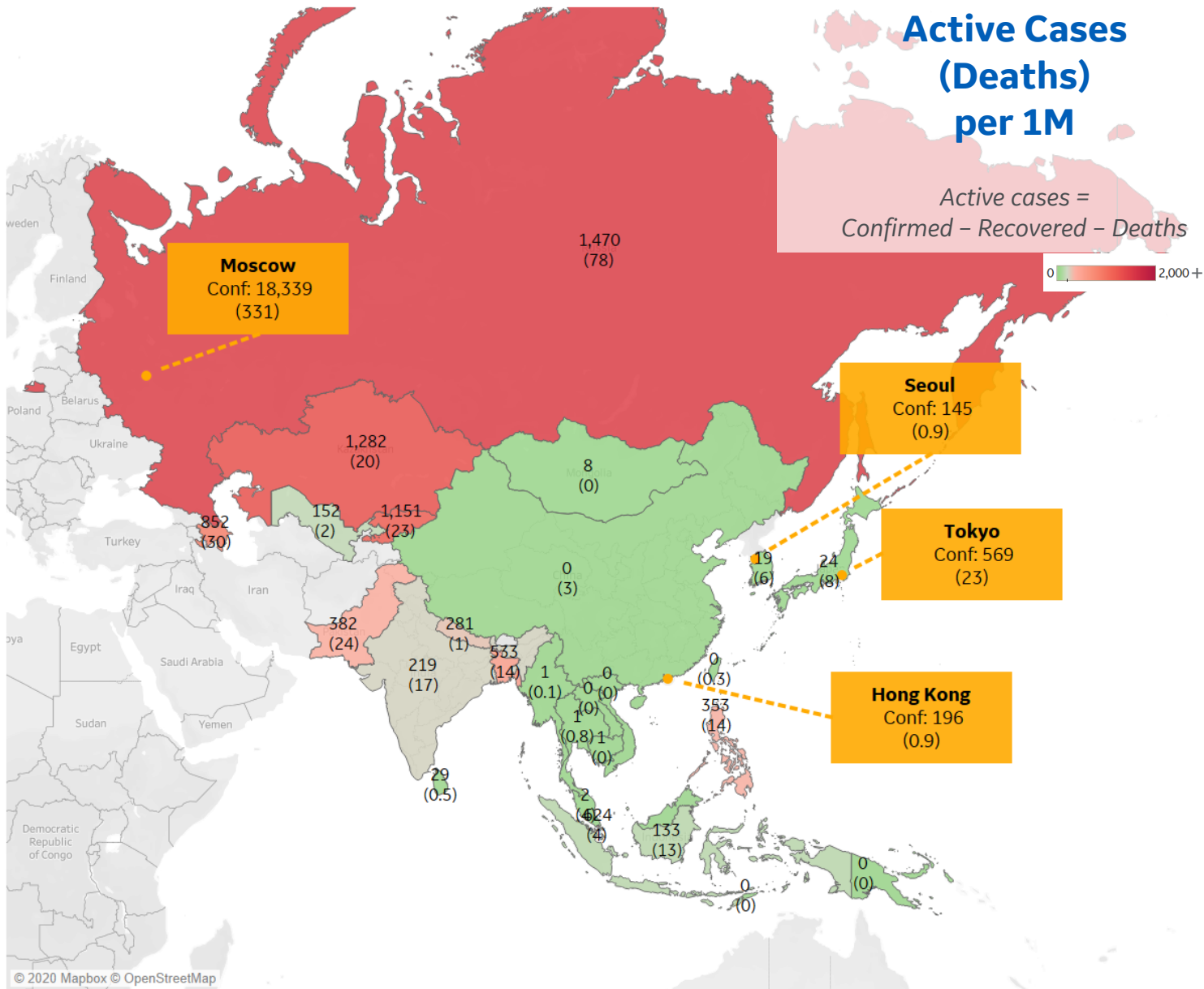
Per 1M in Region

	Today	Change
Active Cases	190	+1%
Confirmed	11 new	+2%
Deaths	0.3 new	+2%
Recovered	8 new	+2%

Most Active Cases per 1M

Russia	1,470
Kazakhstan	1,282
Kyrgyzstan	1,151
Azerbaijan	852
Singapore	624
Bangladesh	533
Pakistan	382
Philippines	353
Nepal	281
India	219

* Excludes regions with population < 1M





Per 1M in Region

	Today	Change
Active Cases	68	+7%
Confirmed	6 new	+1.6%
Deaths	0 new	+0%
Recovered	1 new	+0.3%

Most Active Cases per 1M

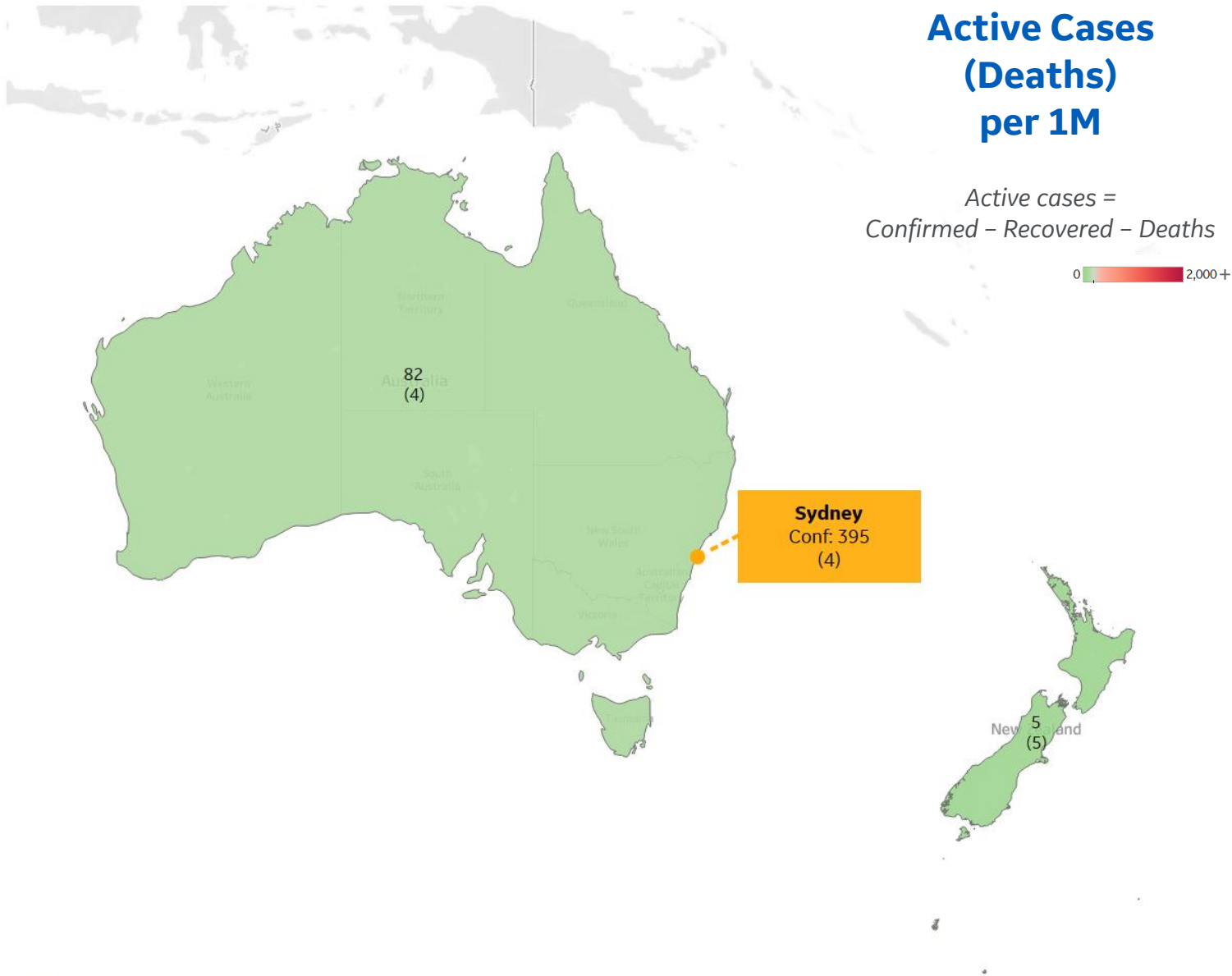
Australia	82
New Zealand	5

* Excludes regions with population < 1M

Active Cases (Deaths) per 1M

Active cases =
Confirmed - Recovered - Deaths

0 2,000 +





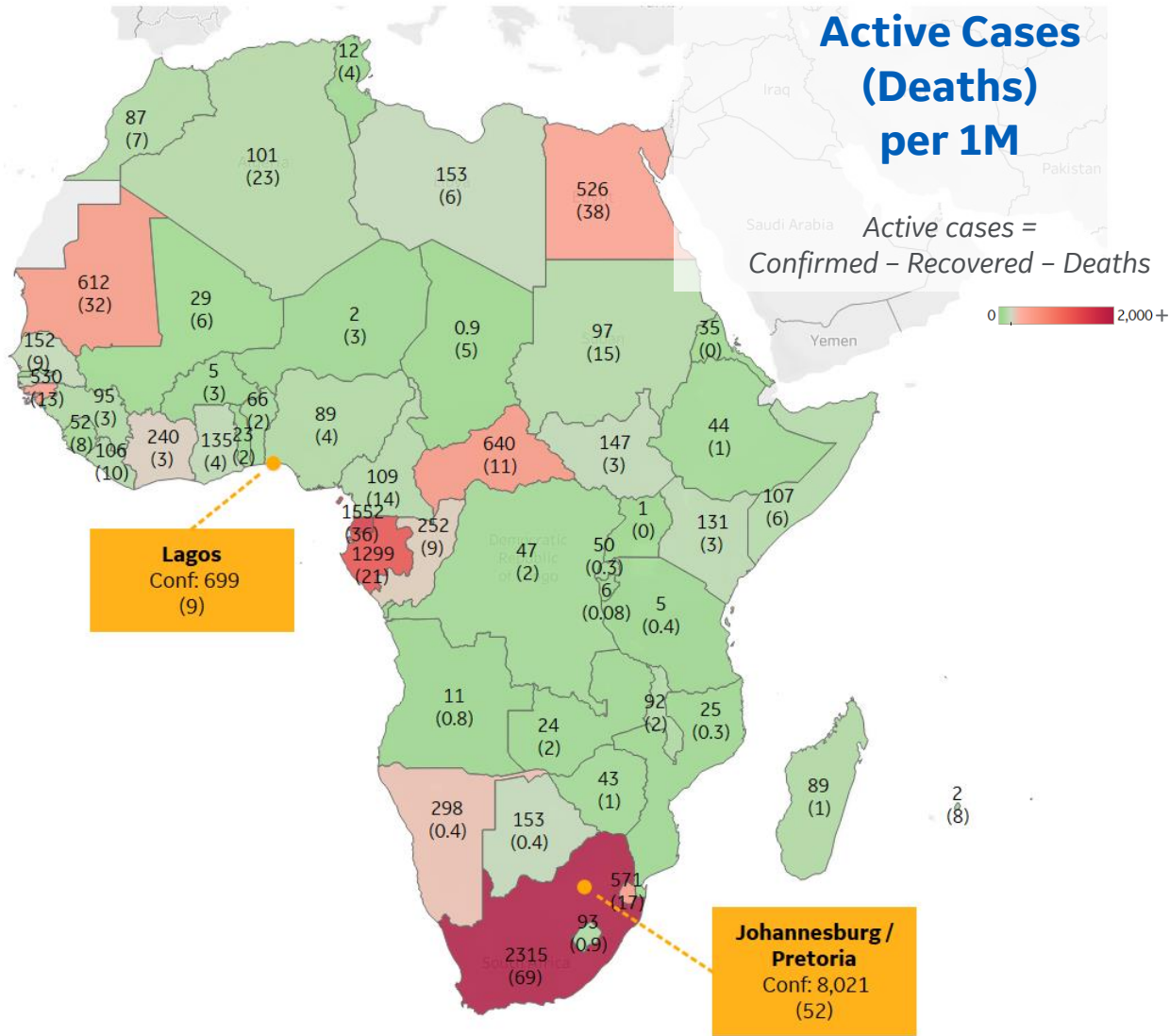
Per 1M in Region

	Today	Change
Active Cases	214	+2%
Confirmed	12 new	+3%
Deaths	0.2 new	+2%
Recovered	8 new	+4%

Most Active Cases per 1M

South Africa	2,315
Eq. Guinea	1,552
Gabon	1,299
Central African R..	640
Mauritania	612
Eswatini	571
Guinea-Bissau	530
Egypt	526
Namibia	298
Congo (Brazzavil..	252

* Excludes regions with population < 1M





*** Per 1M = Per 1 Million Population unless otherwise noted*

Johns Hopkins Coronavirus Resource Center:

<https://coronavirus.jhu.edu/map.html>

Worldometer Coronavirus Reporting:

<https://www.worldometers.info/coronavirus/>

Public Health England:

<https://www.gov.uk/government/publications/covid-19-track-coronavirus-cases>

US Department of Homeland Security, Homeland Infrastructure Foundation-Level Data:

<https://hifld-geoplatform.opendata.arcgis.com/datasets/hospitals>

City of New York, NYC Health:

<https://www1.nyc.gov/site/doh/covid/covid-19-data.page>

Chicago Coronavirus Latest Data:

<https://www.chicago.gov/city/en/sites/covid-19/home/latest-data.html>

National Health Commission of the PRC:

<http://www.nhc.gov.cn/xcs/yqtb/202003/bf66696029ba420098164607240074f8.shtml>

Korean Centers for Disease Control and Prevention:

http://www.cdc.go.kr/cdc_eng/

CDC, Severe Outcomes Among Patients with Coronavirus Disease 2019 (COVID-19):

<https://www.cdc.gov/mmwr/volumes/69/wr/mm6912e2.htm>

Italian Department of Civil Protection, COVID Monitoring:

<http://opendatadpc.maps.arcgis.com/apps/opsdashboard/index.html#/b0c68bce2cce478eaac82fe38d4138b1>

The COVID Tracking Project:

<https://covidtracking.com/data/>

UK Office for National Statistics

<https://www.ons.gov.uk/peoplepopulationandcommunity/birthsdeathsandmarriages/deaths/bulletins/deathsregisteredweeklyinenglandandwalesprovisional/weekending24april2020>

WHO Europe, Surveillance Report:

<http://www.euro.who.int/en/health-topics/health-emergencies/coronavirus-covid-19/weekly-surveillance-report>

WHO Europe, Principles for Transition:

<http://www.euro.who.int/en/media-centre/sections/statements/2020/statement-transition-to-a-new-normal-during-the-covid-19-pandemic-must-be-guided-by-public-health-principles>

COVID-19 Information for Switzerland:

<https://www.corona-data.ch/>

CIA World Factbook:

<https://www.cia.gov/library/publications/resources/the-world-factbook/>

Italian Ministry of Health:

<http://www.salute.gov.it/portale/nuovocoronavirus/dettaglioContenutiNuovoCoronavirus.jsp?lingua=italiano&id=5351&area=nuovoCoronavirus&menu=vuoto>

New South Wales Government:

<https://www.health.nsw.gov.au/Infectious/diseases/Pages/covid-19-latest.aspx>

Provincial Health Services Authority of Canada. BC Center for Disease Control:

<http://www.bccdc.ca/about/news-stories/stories/2020/information-on-novel-coronavirus>

Coronavirus Cases in Japan by Prefecture, Nippon Communications Foundation:

<https://www.nippon.com/en/japan-data/h00657/coronavirus-cases-in-japan-by-prefecture.html>

Secretary of Health, Mexico:

<https://www.gob.mx/salud/en>

OECD Economic Outlooks, Statistics:

https://www.oecd-ilibrary.org/economics/data/oecd-economic-outlook-statistics-and-projections_eo-data-en

Public Health Authority of Sweden:

<https://www.folkhalsomyndigheten.se/smittskydd-beredskap/utbrott/aktuella-utbrott/covid-19/bekraftade-fall-i-sverige>

National Public Health Agency of France:

<https://www.santepubliquefrance.fr/regions/ile-de-france/documents/bulletin-regional/2020/covid-19-point-epidemiologique-en-ile-de-france-du-23-avril-2020>

Florida Department of Health, COVID-19 Response:

<https://floridahealthcovid19.gov>

CDC:

<https://www.cdc.gov/covid-data-tracker/index.html#demographics>