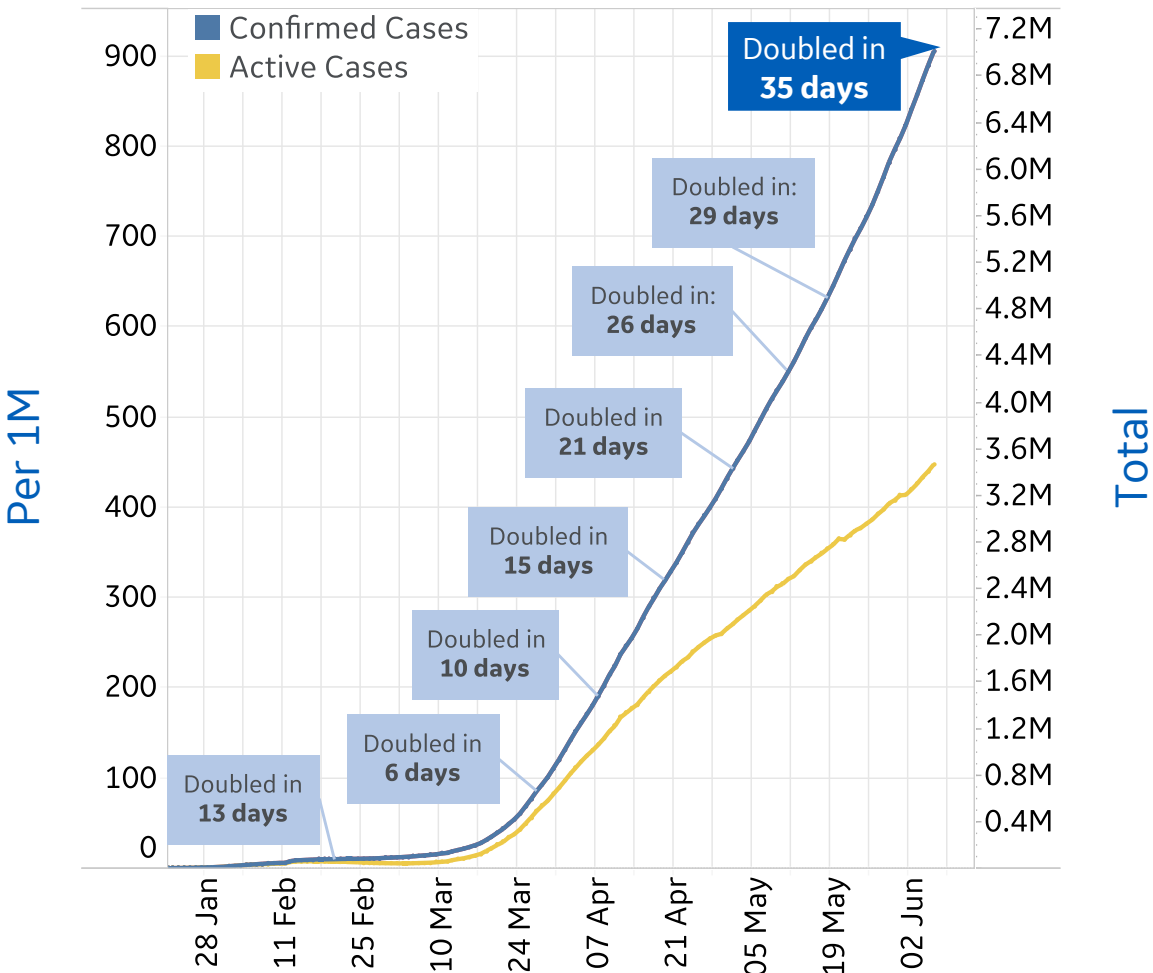




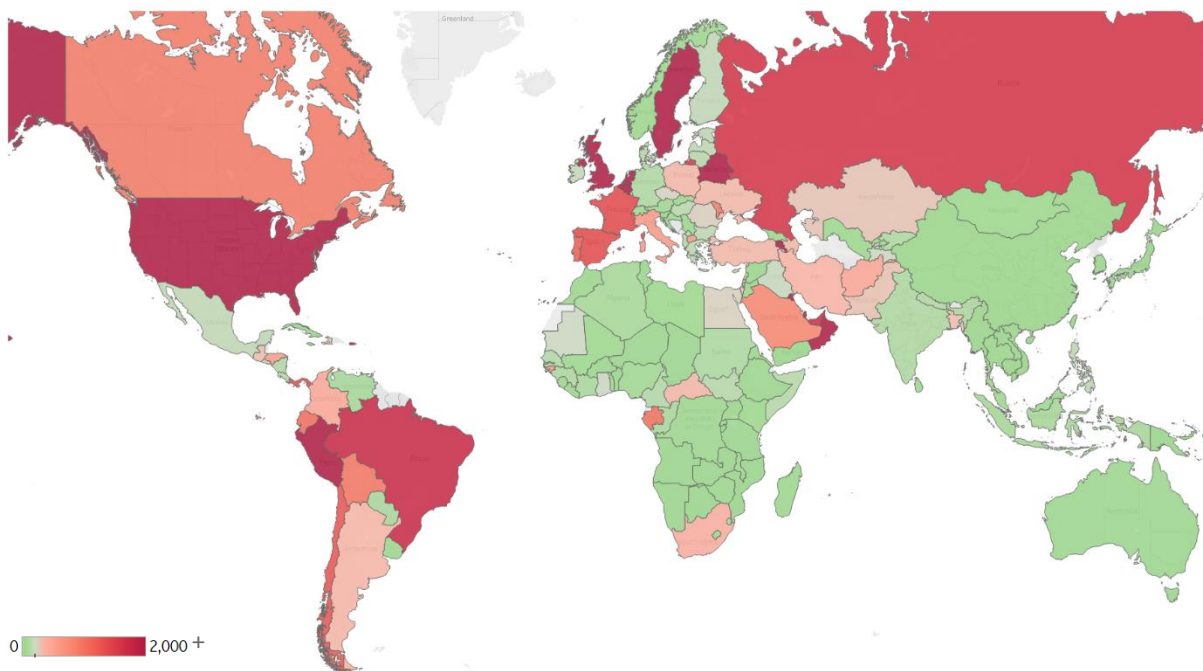
Global Confirmed & Active Cases

Trend since 22 Jan



Today per 1M

Active cases = Confirmed - Recovered - Deaths



Per 1M:	Today	Change
Active Today	447	+2%
Active	7 new	+2%
Confirmed	15 new	+2%
Deaths	0.4 new	+1%
Recovered	7 new	+2%



New Confirmed Cases & New Deaths

Key

North America

Europe

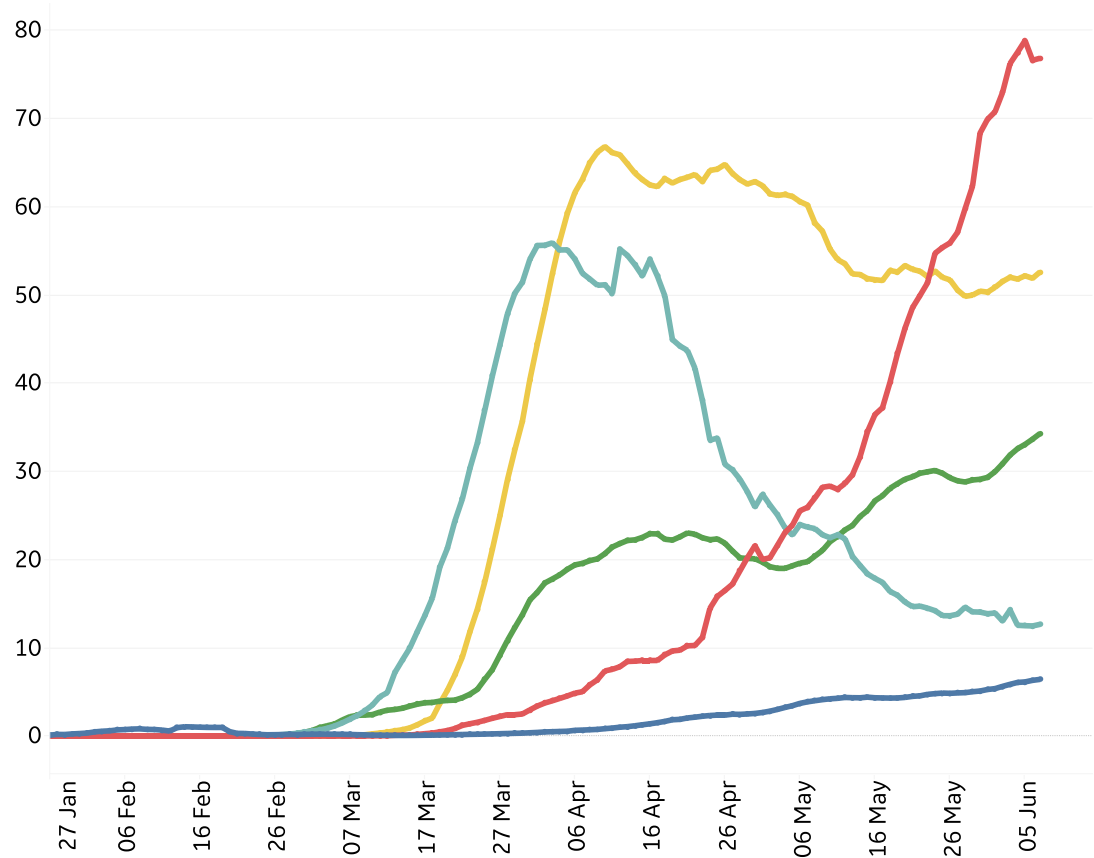
Middle East

Central/South America

Asia

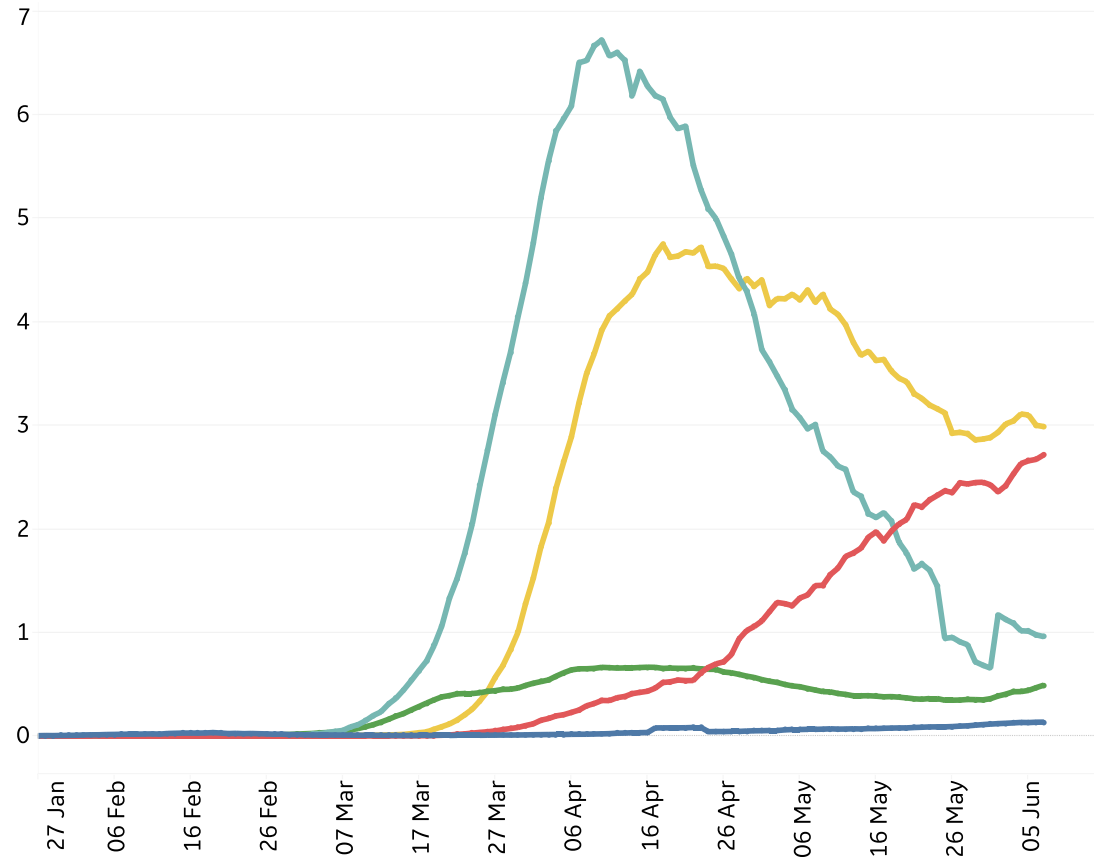
New Confirmed Cases / 1M

7-day rolling average



New Deaths / 1M

7-day rolling average





Top 50 Countries: Per 1M

1 - 25

	Active Today	Today			Total since 22 Jan		
		Confirmed	Deaths	Recovered	Total Confirmed	Total Deaths	Total Recovered
Qatar	8,468	554	1	629	23,877	19	15,390
US	4,004	67	2	17	5,868	334	1,530
Sweden	3,968	83	0	0	4,429	461	0
UK	3,620	20	1	0	4,237	598	18
Peru	3,179	144	5	106	5,960	166	2,615
Bahrain	3,097	223	1	242	8,676	15	5,564
Armenia	3,009	259	3	100	4,431	67	1,355
Belgium	2,877	13	1	9	5,110	828	1,406
Kuwait	2,665	168	2	216	7,458	62	4,731
Oman	2,615	170	1	0	3,306	15	676
Belarus	2,615	93	1	67	5,146	28	2,503
Netherlands	2,426	14	0	0	2,788	352	11
Singapore	2,222	65	0	56	6,480	4	4,254
Brazil	1,747	89	2	32	3,254	172	1,336
UAE	1,691	55	0	76	3,924	28	2,205
Russia	1,610	61	1	37	3,201	40	1,551
France	1,394	5	0	0	2,928	447	1,087
Spain	1,370	5	0	0	5,166	580	3,216
Panama	1,347	98	2	23	3,807	91	2,368
Chile	1,274	335	5	227	7,018	86	5,658
Portugal	1,198	34	0	18	3,402	145	2,059
Ecuador	1,047	22	1	0	2,444	205	1,191
Gabon	1,010	0	0	0	1,393	9	374
Bolivia	950	24	1	16	1,169	40	179
Moldova	922	47	2	47	2,405	85	1,398

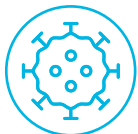
26 - 50

	Active Today	Today			Total since 22 Jan		
		Confirmed	Deaths	Recovered	Total Confirmed	Total Deaths	Total Recovered
Canada	917	19	1	16	2,575	209	1,449
Saudi Arabia	815	87	1	30	2,927	20	2,092
EU	791	8	0	4	2,657	288	1,578
Eq. Guinea	780	0	0	0	931	9	143
Dom. Rep.	650	37	0	8	1,807	50	1,107
Guinea-Bissau	611	0	0	0	695	6	78
North Macedo..	588	53	1	3	1,452	73	790
Italy	583	3	1	13	3,887	561	2,743
Honduras	541	17	1	2	639	26	72
Afghanistan	465	20	1	1	523	9	48
Colombia	442	27	1	14	750	25	283
South Africa	387	39	1	2	814	17	411
Iran	347	28	1	28	2,045	99	1,600
Argentina	337	17	0	16	504	15	153
Poland	332	15	0	6	702	31	340
Central Africa..	329	13	0	0	338	1	8
Azerbaijan	327	31	0	12	745	9	409
Ukraine	327	11	0	6	631	18	286
Turkey	326	11	0	32	2,017	56	1,636
Bangladesh	310	17	0	3	399	5	84
Guatemala	309	15	1	7	394	14	70
Pakistan	287	22	0	4	448	9	151
Israel	286	13	0	6	2,064	34	1,744
Haiti	286	23	0	0	292	4	2
Total World	447	15	0	7	905	52	405

Several countries are revising and updating case counts

Worldwide total confirmed cases surpassed 7M (7,009,065)

Top 50 countries selected by Active Cases / 1M
Excluded countries with population < 1M



Top 50 Countries: Raw Volume

1 - 25

		Today			Total since 22 Jan		
	Active Cases	Confirmed	Deaths	Recovered	Total Confirmed	Total Deaths	Total Recovered
US	1,325,482	22,302	712	5,518	1,942,363	110,514	506,367
Brazil	371,351	18,912	525	6,803	691,758	36,455	283,952
EU	352,280	3,627	124	1,870	1,183,094	128,152	702,662
UK	245,757	1,327	77	9	287,621	40,625	1,239
Russia	234,950	8,971	134	5,337	467,073	5,851	226,272
Peru	104,831	4,757	164	3,488	196,515	5,465	86,219
France	90,983	343	13	37	191,102	29,158	70,961
Spain	64,038	240	1	0	241,550	27,136	150,376
Pakistan	63,476	4,960	67	884	98,943	2,002	33,465
Bangladesh	50,978	2,743	42	578	65,769	888	13,903
Netherlands	41,567	239	2	0	47,780	6,032	181
Sweden	40,071	843	3	0	44,730	4,659	0
Italy	35,262	197	53	759	234,998	33,899	165,837
Canada	34,626	703	27	588	97,178	7,877	54,675
Belgium	33,340	154	15	101	59,226	9,595	16,291
Iran	29,159	2,364	72	2,311	171,789	8,281	134,349
Turkey	27,471	914	23	2,647	170,132	4,692	137,969
Saudi Arabia	28,385	3,045	36	1,026	101,914	712	72,817
Belarus	24,714	879	6	632	48,630	269	23,647
Qatar	24,398	1,595	3	1,811	68,790	54	44,338
Chile	24,363	6,405	96	4,333	134,150	1,637	108,150
Colombia	22,470	1,390	61	744	38,149	1,265	14,414
South Africa	22,923	2,312	46	106	48,285	998	24,364
Ecuador	18,479	392	13	0	43,120	3,621	21,020
Afghanistan	18,110	791	30	45	20,342	357	1,875

26 - 50

		Today			Total since 22 Jan		
	Active Cases	Confirmed	Deaths	Recovered	Total Confirmed	Total Deaths	Total Recovered
UAE	16,726	540	1	745	38,808	276	21,806
Argentina	15,221	774	16	729	22,794	664	6,909
Ukraine	14,290	498	11	248	27,599	796	12,513
Oman	13,356	866	3	0	16,882	75	3,451
Singapore	12,999	383	0	327	37,910	25	24,886
Poland	12,549	575	4	214	26,561	1,157	12,855
Portugal	12,219	342	5	188	34,693	1,479	20,995
Kuwait	11,379	717	10	923	31,848	264	20,205
Bolivia	11,092	285	11	184	13,643	465	2,086
Armenia	8,916	766	10	294	13,130	200	4,014
Dom. Rep.	7,055	405	2	88	19,600	538	12,007
Panama	5,814	421	7	100	16,425	393	10,218
Guatemala	5,542	263	22	128	7,055	252	1,261
Honduras	5,357	172	8	15	6,327	258	712
Bahrain	5,269	380	2	412	14,763	26	9,468
Moldova	3,721	189	10	188	9,700	341	5,638
Azerbaijan	3,316	314	4	125	7,553	88	4,149
Haiti	3,259	262	1	0	3,334	51	24
Israel	2,474	111	3	49	17,863	298	15,091
Gabon	2,247	0	0	0	3,101	21	833
Central Africa..	1,591	64	0	1	1,634	5	38
North Macedo..	1,226	110	2	6	3,025	153	1,646
Guinea-Bissau	1,203	0	0	0	1,368	12	153
Eq. Guinea	1,094	0	0	0	1,306	12	200
Total World	3,465,415	117,852	3,012	55,087	7,009,065	402,730	3,140,920

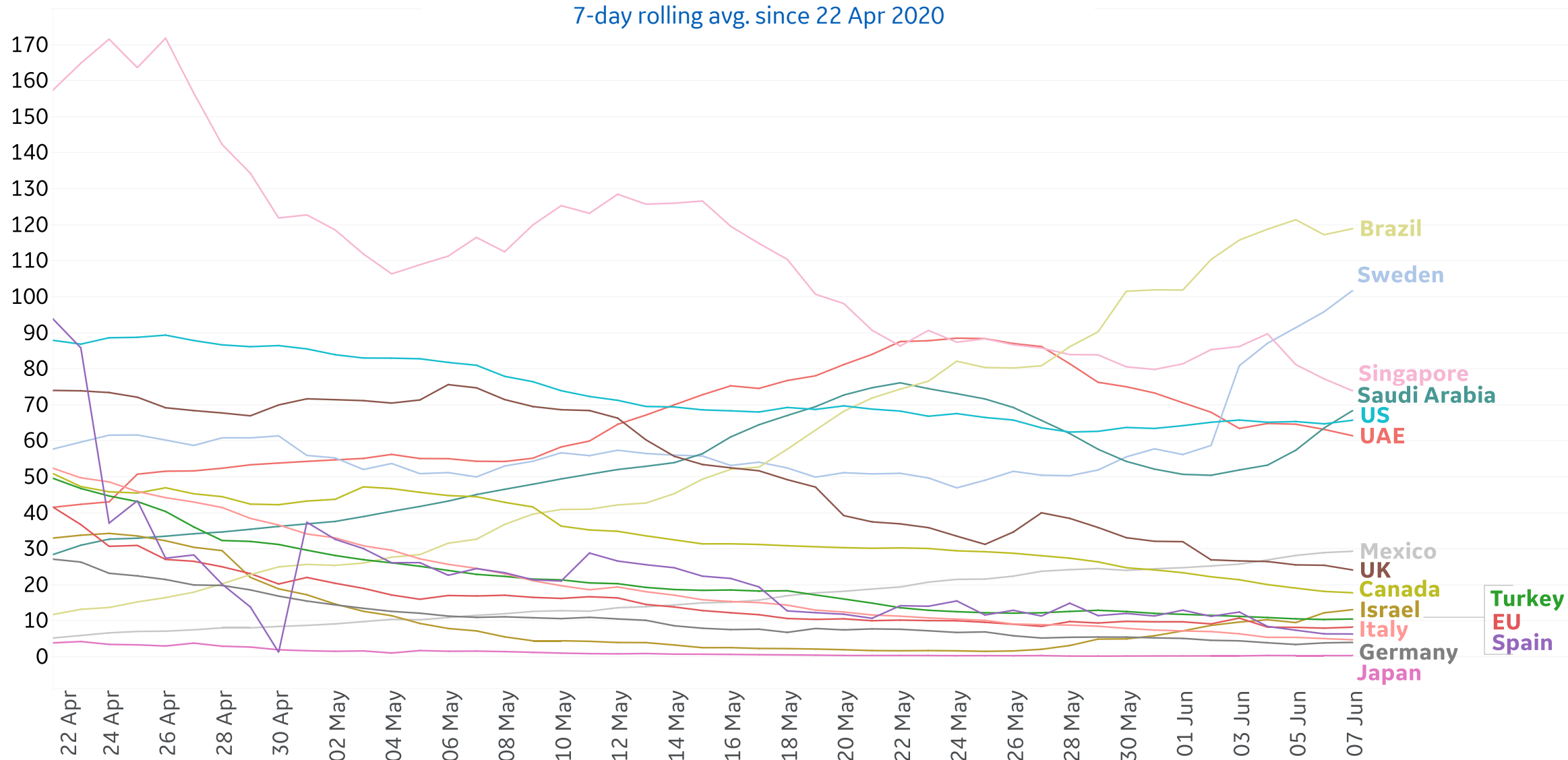
Several countries are revising and updating case counts

Confirmed cases in **Saudi Arabia** increased 9% in the last 3 days

Top 50 countries selected by Active Cases / 1M
Excluded countries with population < 1M

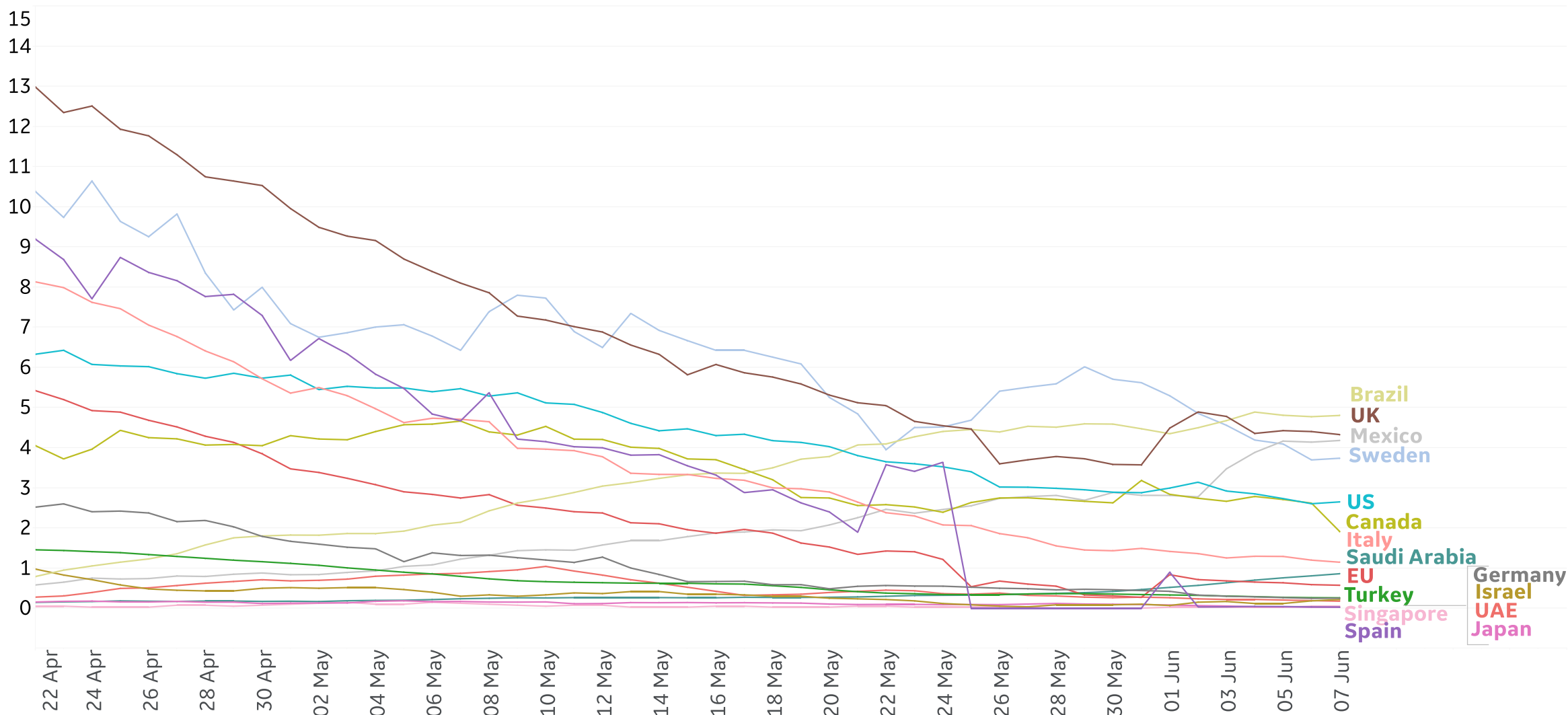


7-day rolling avg. since 22 Apr 2020





7-day rolling avg. since 22 Apr 2020

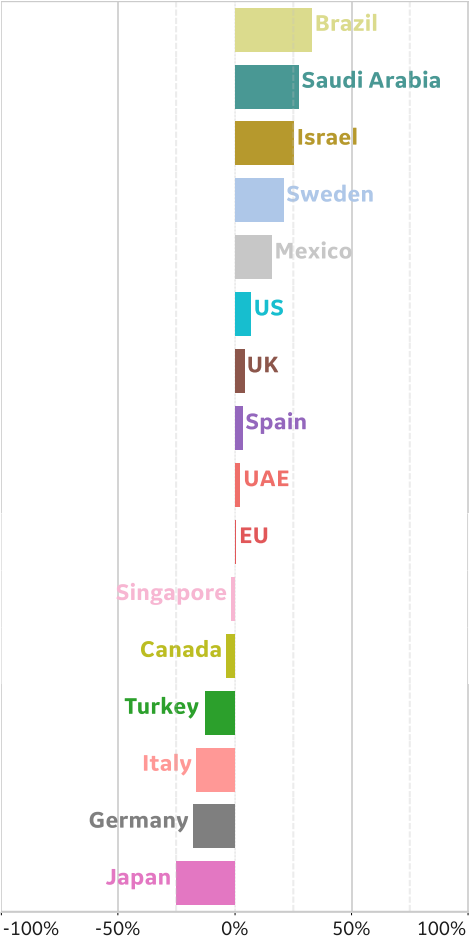




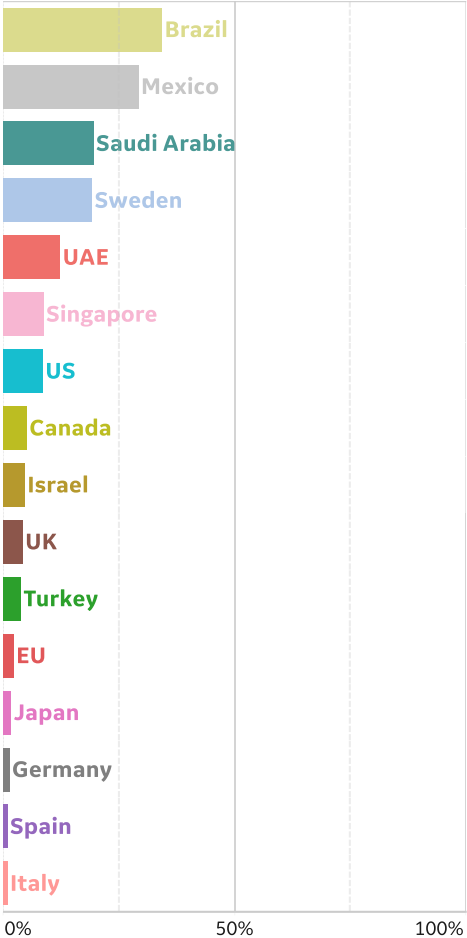
% Change in Case Volume in Select Countries

Over Previous 7 days

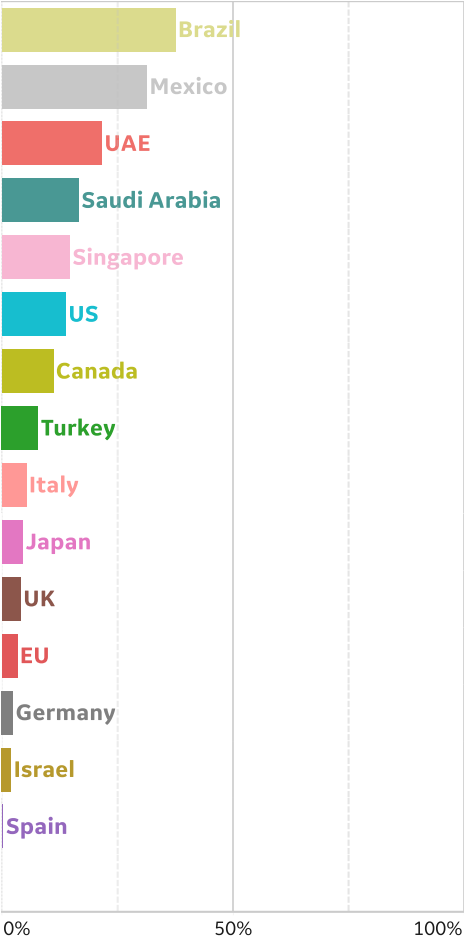
Active Cases



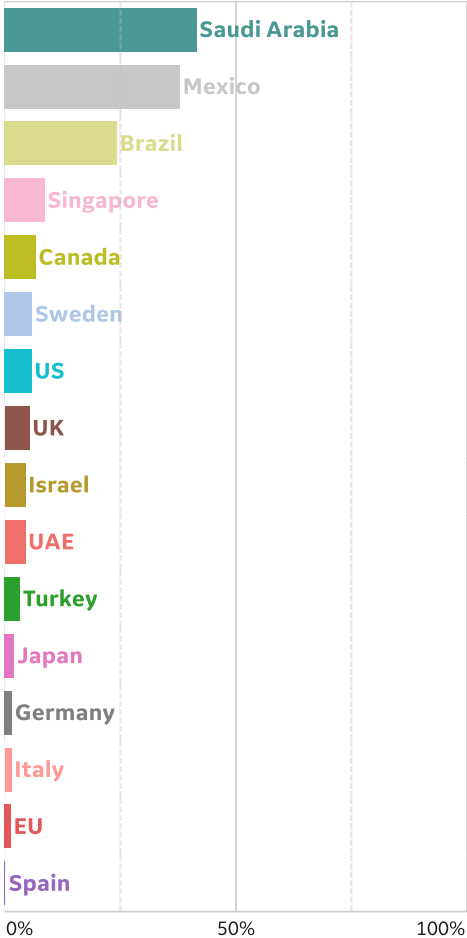
Confirmed Cases



Reported Recoveries



Reported Deaths

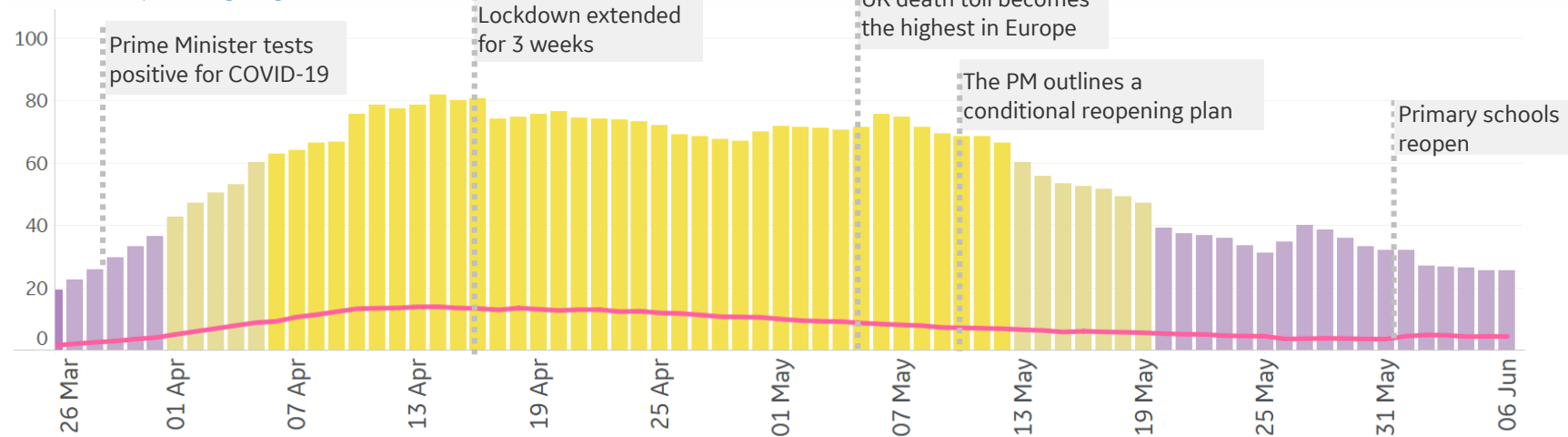




Feature: UK

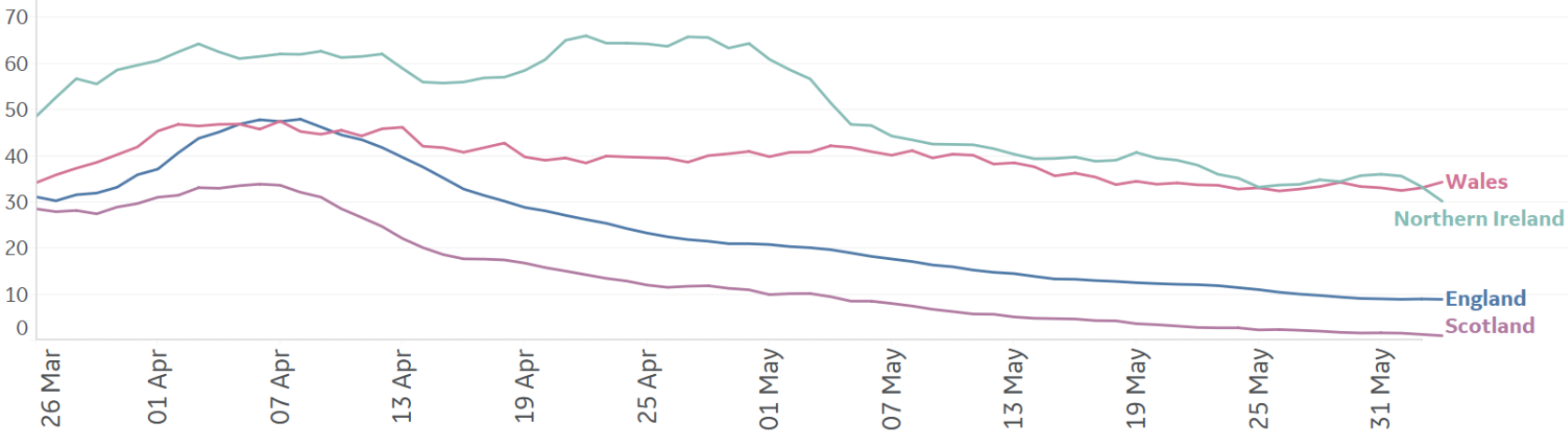
New Confirmed Cases and Deaths / 1M

7-day rolling avg



Daily New Hospital Admissions / 1M

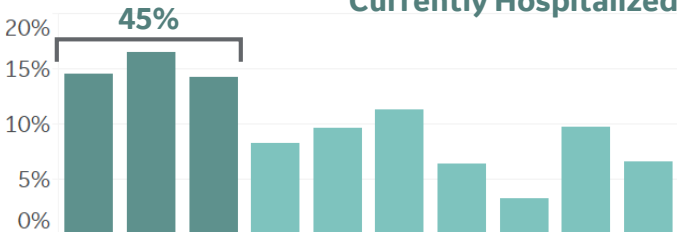
7-day rolling avg (Data through 3 June)



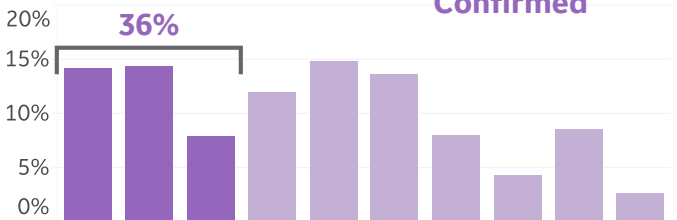
Regional Profiles

While only 32% of the UK's population lives in the Midlands, Wales and the North West regions, this group makes up 45% of currently hospitalized cases. Wales makes up 8% of cases but 14% of currently hospitalized.

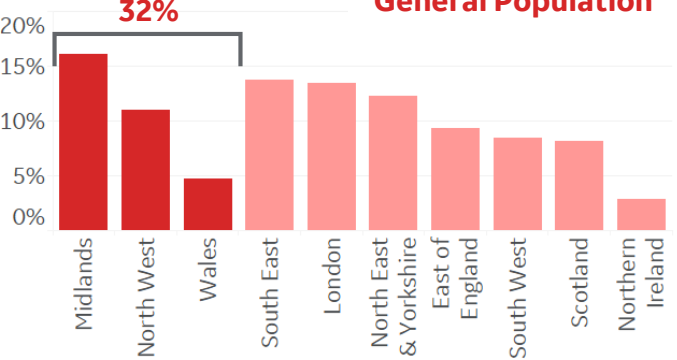
Currently Hospitalized



Confirmed



General Population





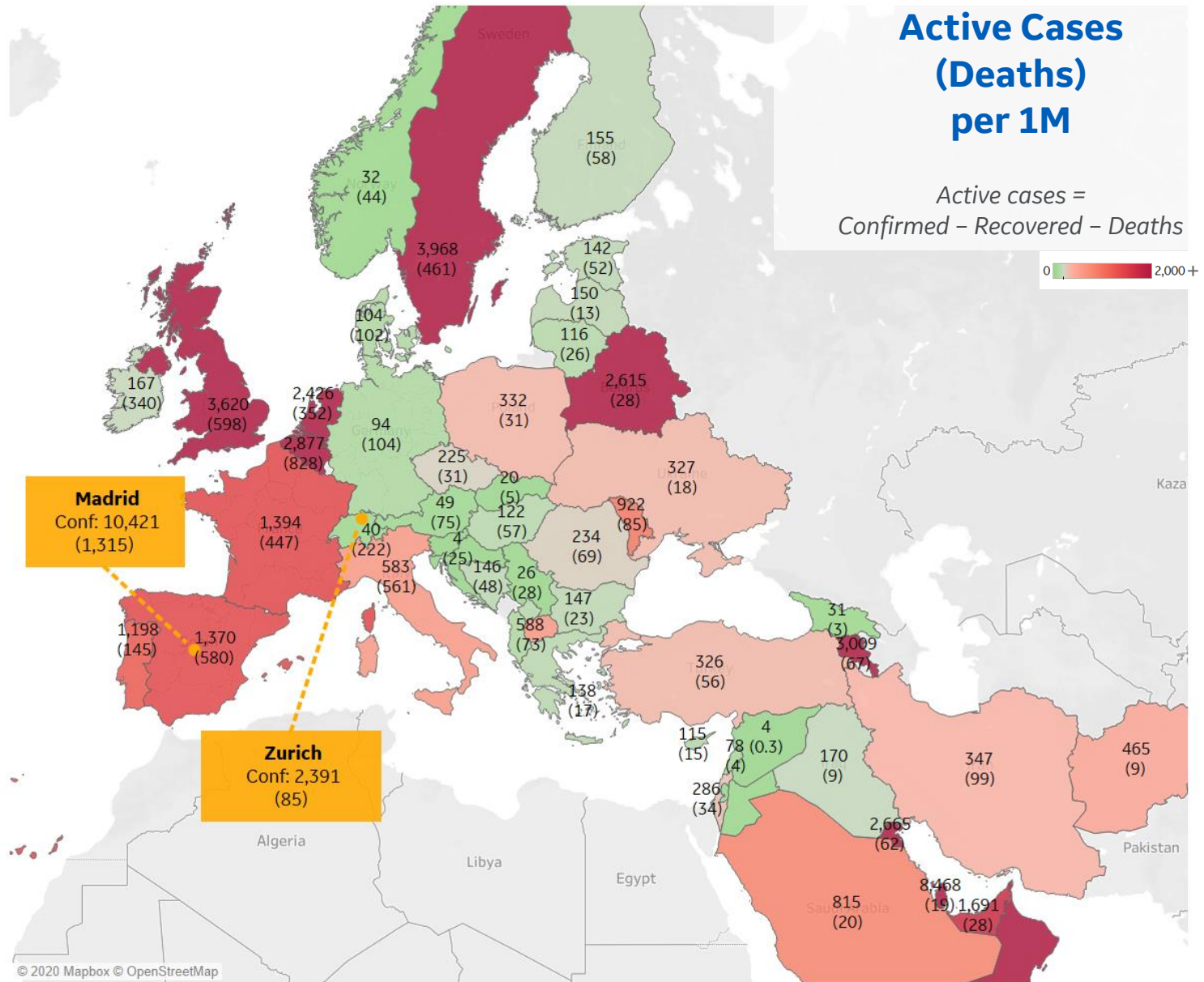
Per 1M in Region

	Today	Change
Active Cases	868	+1%
Confirmed	21 new	+1%
Deaths	0.5 new	+0.2%
Recovered	15 new	+1%

Most Active Cases per 1M

Qatar	8,468
Sweden	3,968
UK	3,620
Bahrain	3,097
Armenia	3,009
Belgium	2,877
Kuwait	2,665
Oman	2,615
Belarus	2,615
Netherlands	2,426

* Excludes regions with population < 1M





Per 1M in Region

	Today	Change
Active Cases	3,386	+1%
Confirmed	18 new	+0.4%
Deaths	1 new	+0.2%
Recovered	0 new	+0%

Most Active Cases per 1M

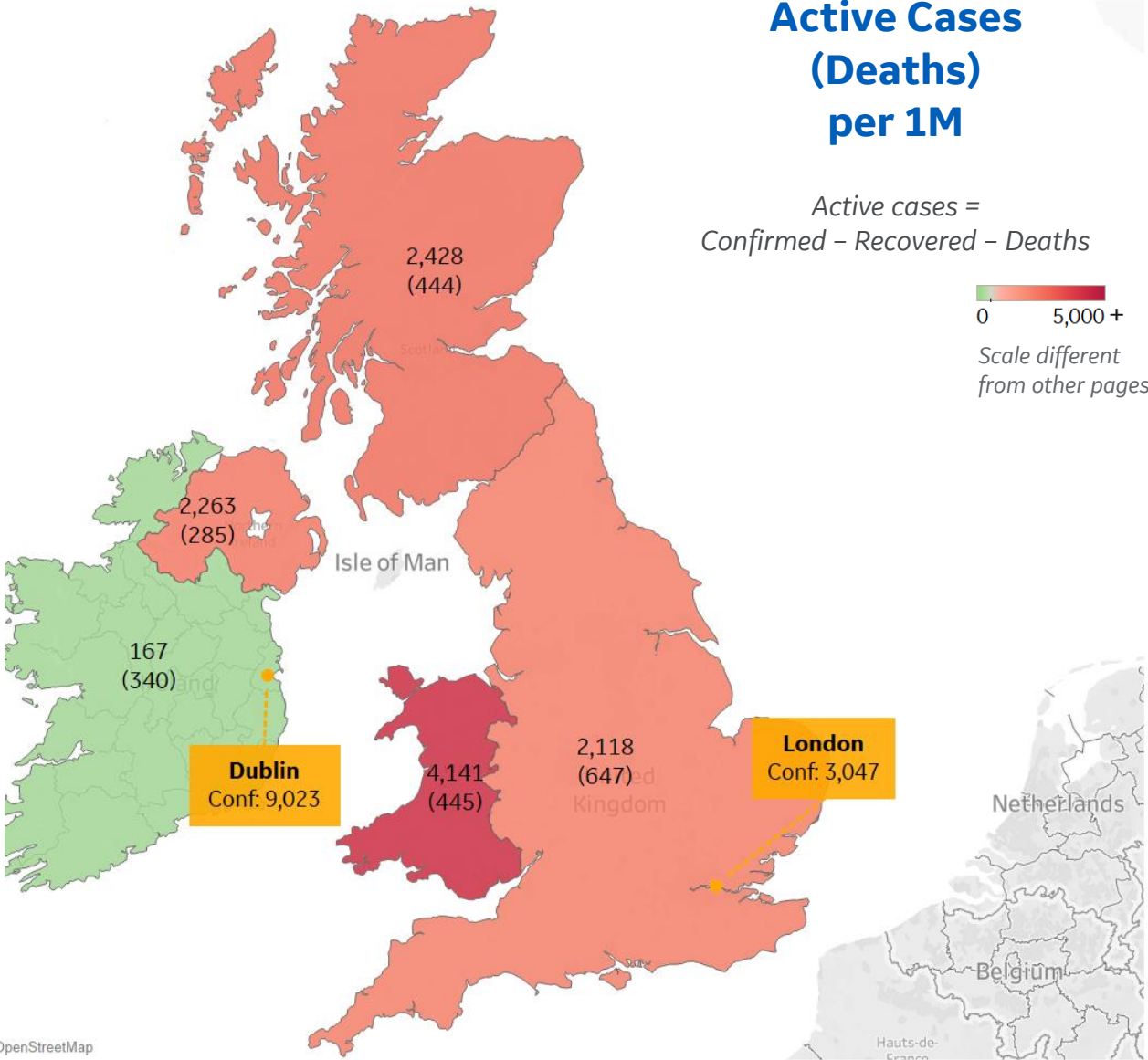
Wales	4,141
Scotland	2,428
Northern Ireland	2,263
England	2,118
Ireland	167

Active Cases (Deaths) per 1M

Active cases =
Confirmed – Recovered – Deaths

0 5,000 +

Scale different
from other pages



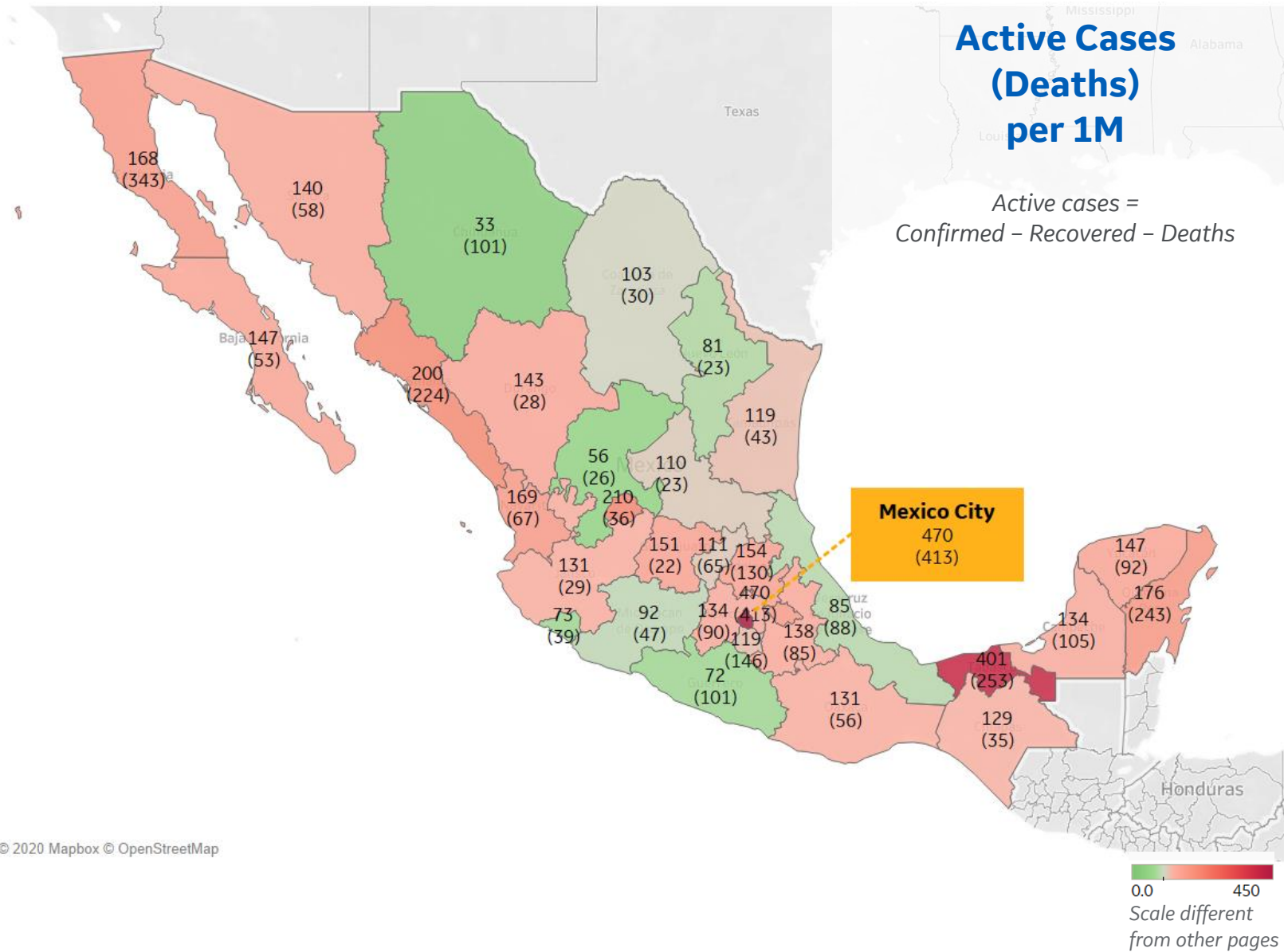


Per 1M in Region

	Today	Change
Active Cases	152	+2%
Confirmed	27 new	+3%
Deaths	1 new	+1%
Recovered	23 new	+4%

Most Active Cases per 1M

Distrito Federal	470
Tabasco	401
Aguascalientes	210
Sinaloa	200
Quintana Roo	176
Nayarit	169
Baja California	168
Tlaxcala	168
Hidalgo	154
Guanajuato	151



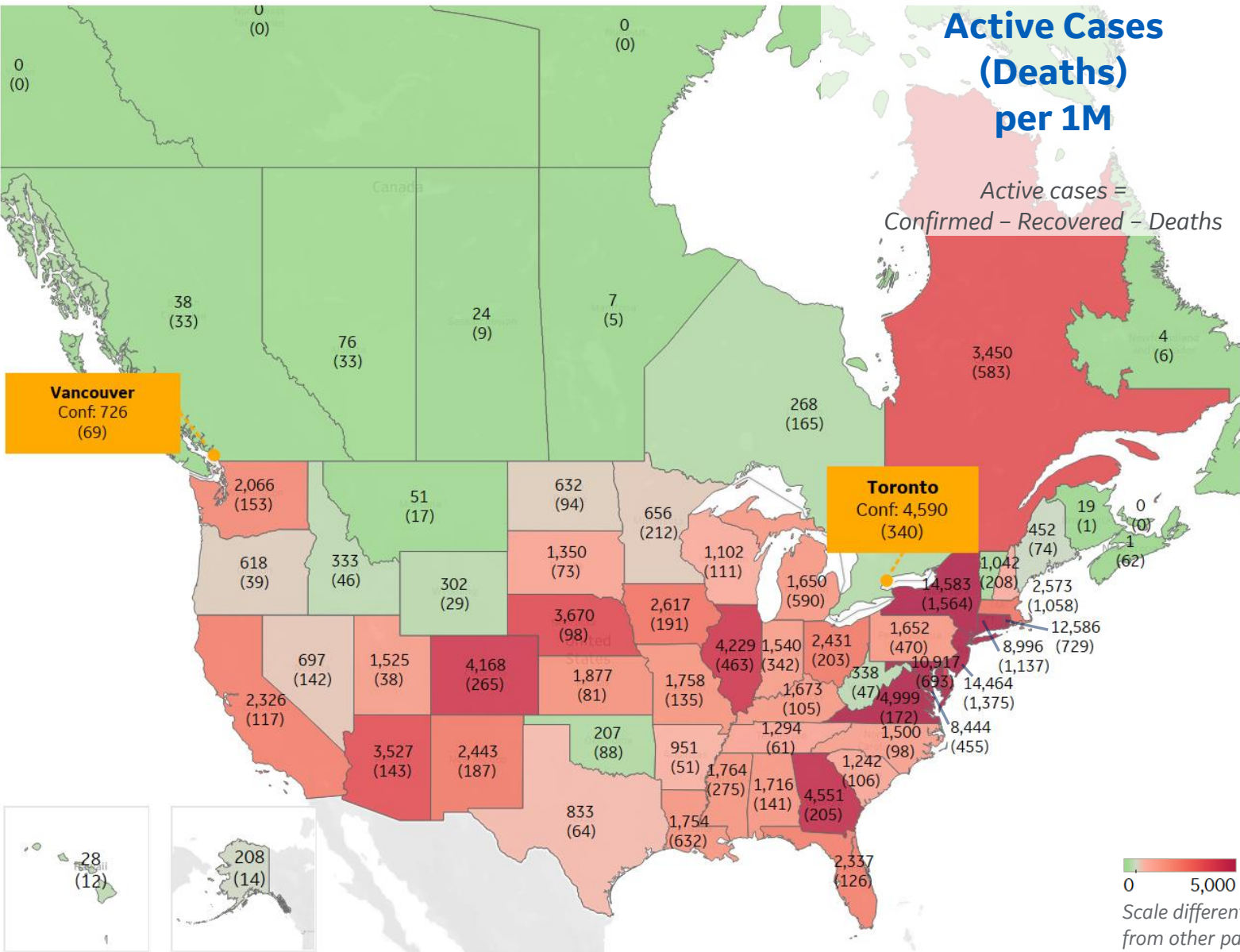


Per 1M in Region

	Today	Change
Active Cases	3,688	+1%
Confirmed	62 new	+1%
Deaths	2 new	+1%
Recovered	16 new	+1%

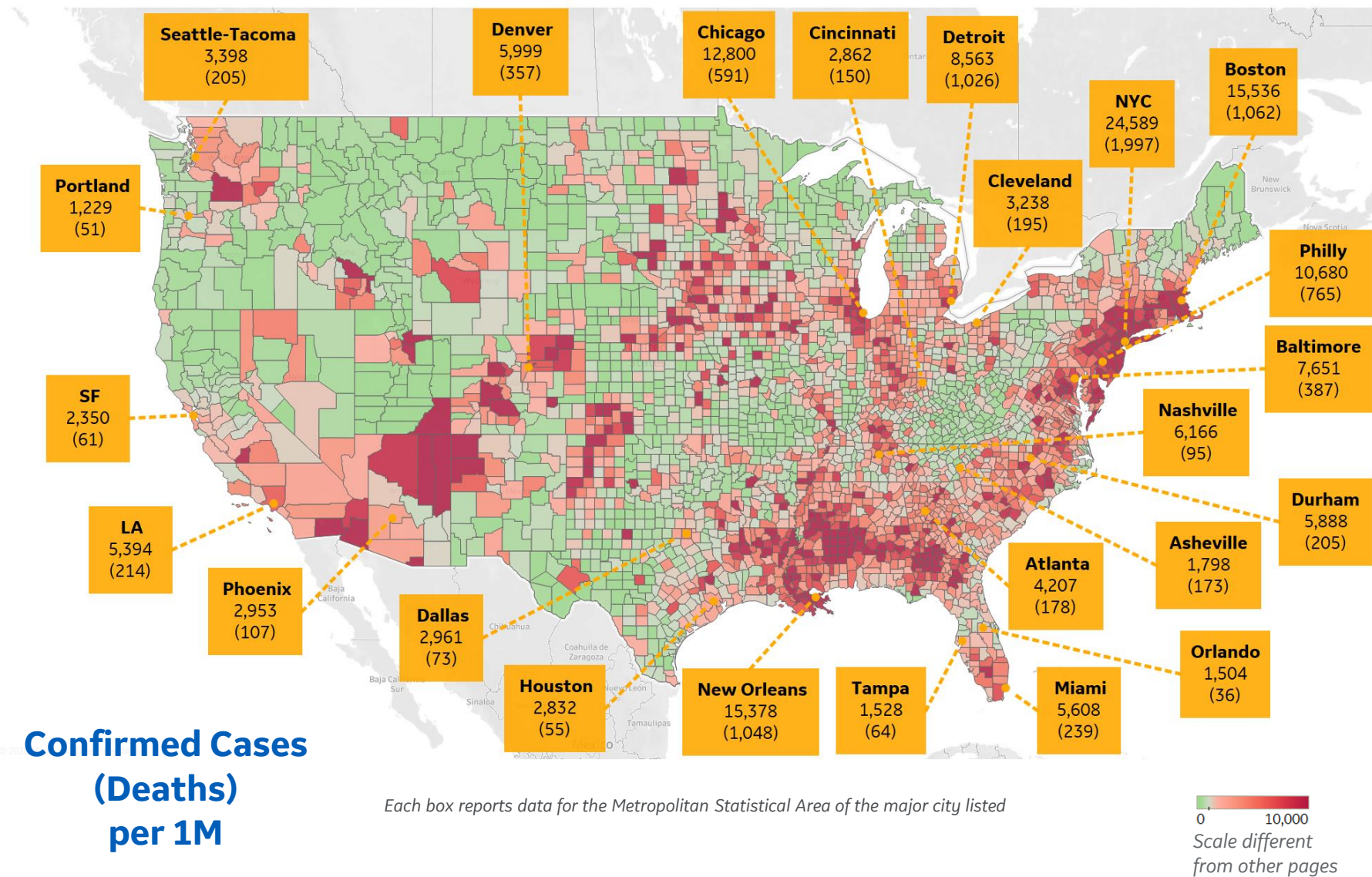
Most Active Cases per 1M

New York	14,583
New Jersey	14,464
Rhode Island	12,586
DC	10,917
Connecticut	8,996
Maryland	8,444
Virginia	4,999
Georgia	4,551
Illinois	4,229
Colorado	4,168





US by County & Metro, Total to Date



Top 10 Northeast Counties

Total Confirmed Cases / 1M

Rockland County, NY	40,430
Westchester County, NY	34,645
Passaic County, NJ	32,174
Nassau County, NY	29,791
Union County, NJ	28,302
Hudson County, NJ	28,017
Orange County, NY	27,018
Suffolk County, NY	26,909
New York City*	24,375
Suffolk County, MA	22,698

Top 10 Other US Counties

Total Confirmed Cases / 1M

Orleans Parish, LA	18,265
Jefferson Parish, LA	17,565
Prince George's County, MD	16,706
Cook County, IL	15,156
Yakima County, WA	14,580
District of Columbia, DC	12,468
Lake County, IL	11,891
Kane County, IL	11,887
Prince William County, VA	11,780
Wayne County, MI	11,626

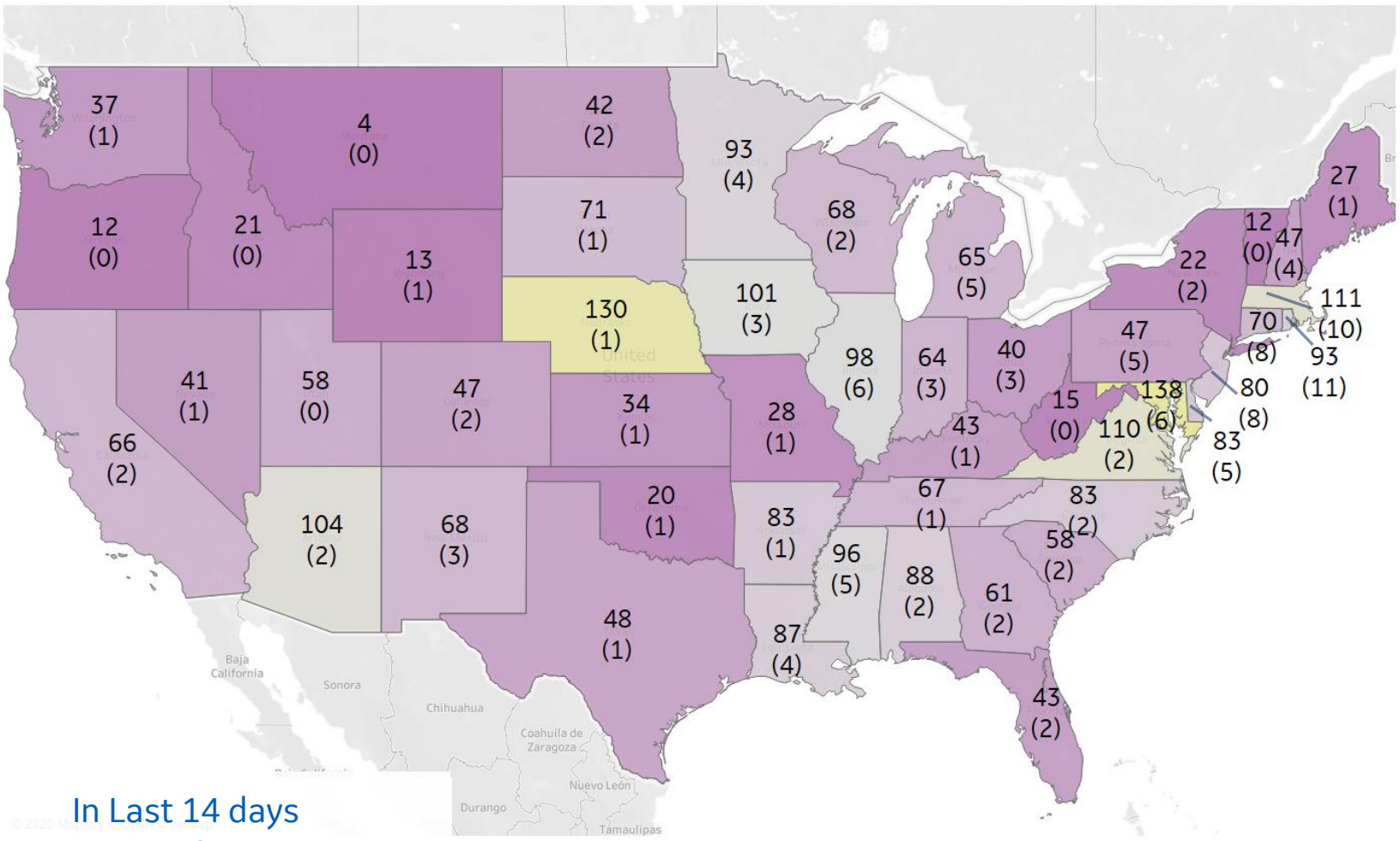
Note: Includes counties ≥ 250K population
* New York City counties aggregated into one reporting area



US, New in Last 14 days

Updated 8 June 2020, 3:30 GMT

16



Top 10 by New Confirmed

Avg New Confirmed Cases / 1M

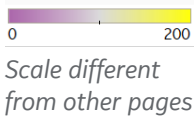
Maryland	138
Nebraska	130
District of Columbia	124
Massachusetts	111
Virginia	110
Arizona	104
Iowa	101
Illinois	98
Mississippi	96
Rhode Island	93

Top 10 by New Deaths

Avg New Deaths / 1M

Rhode Island	11
Massachusetts	10
Connecticut	8
New Jersey	8
District of Columbia	6
Illinois	6
Maryland	6
Delaware	5
Michigan	5
Mississippi	5

In Last 14 days
Avg New Confirmed Cases
(Avg New Deaths)
per 1M





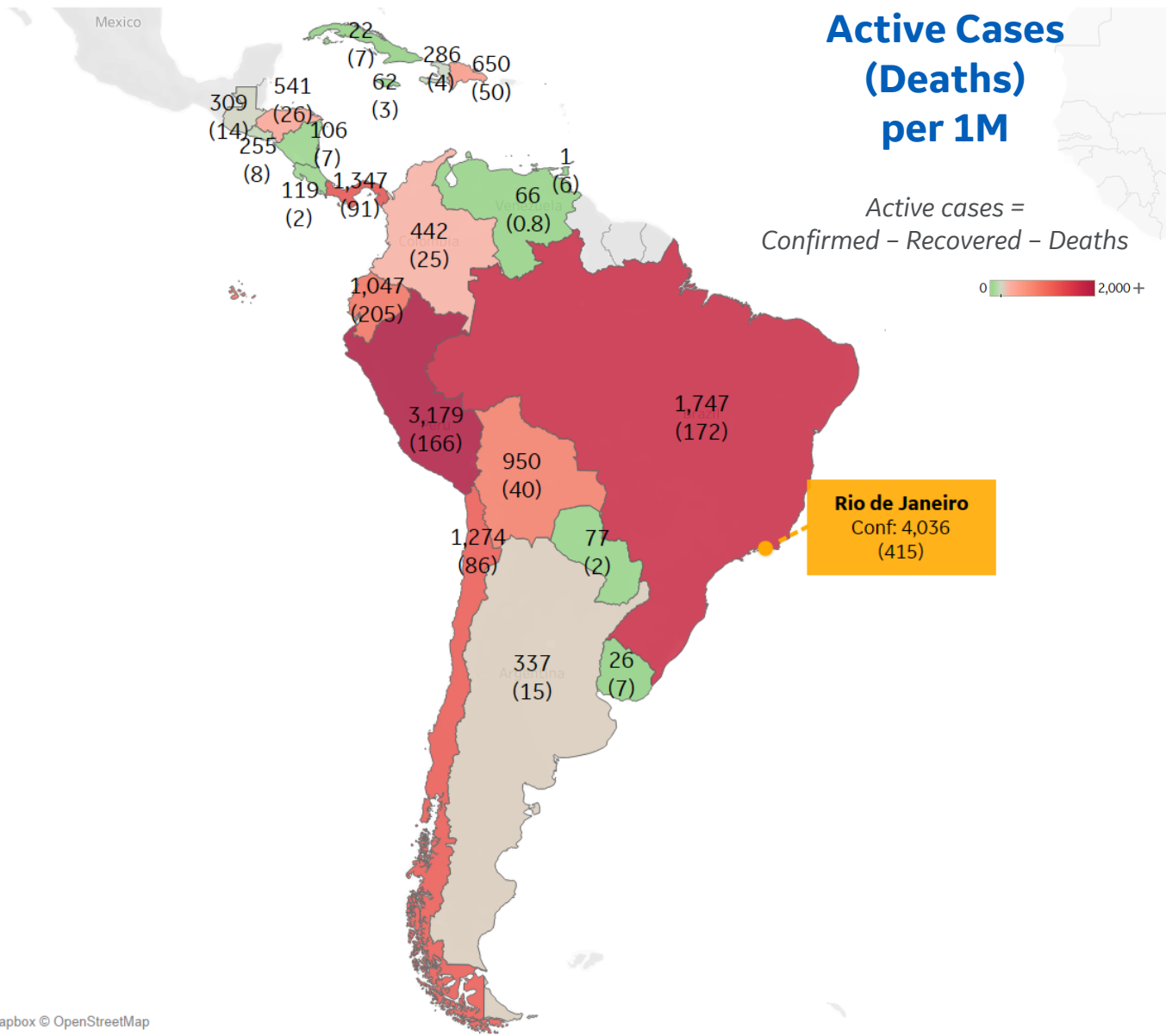
Per 1M in Region

	Today	Change
Active Cases	1,155	+3%
Confirmed	67 new	+3%
Deaths	2 new	+2%
Recovered	32 new	+3%

Most Active Cases per 1M

Peru	3,179
Brazil	1,747
Panama	1,347
Chile	1,274
Ecuador	1,047
Bolivia	950
Dom. Rep.	650
Honduras	541
Colombia	442
Argentina	337

* Excludes regions with population < 1M





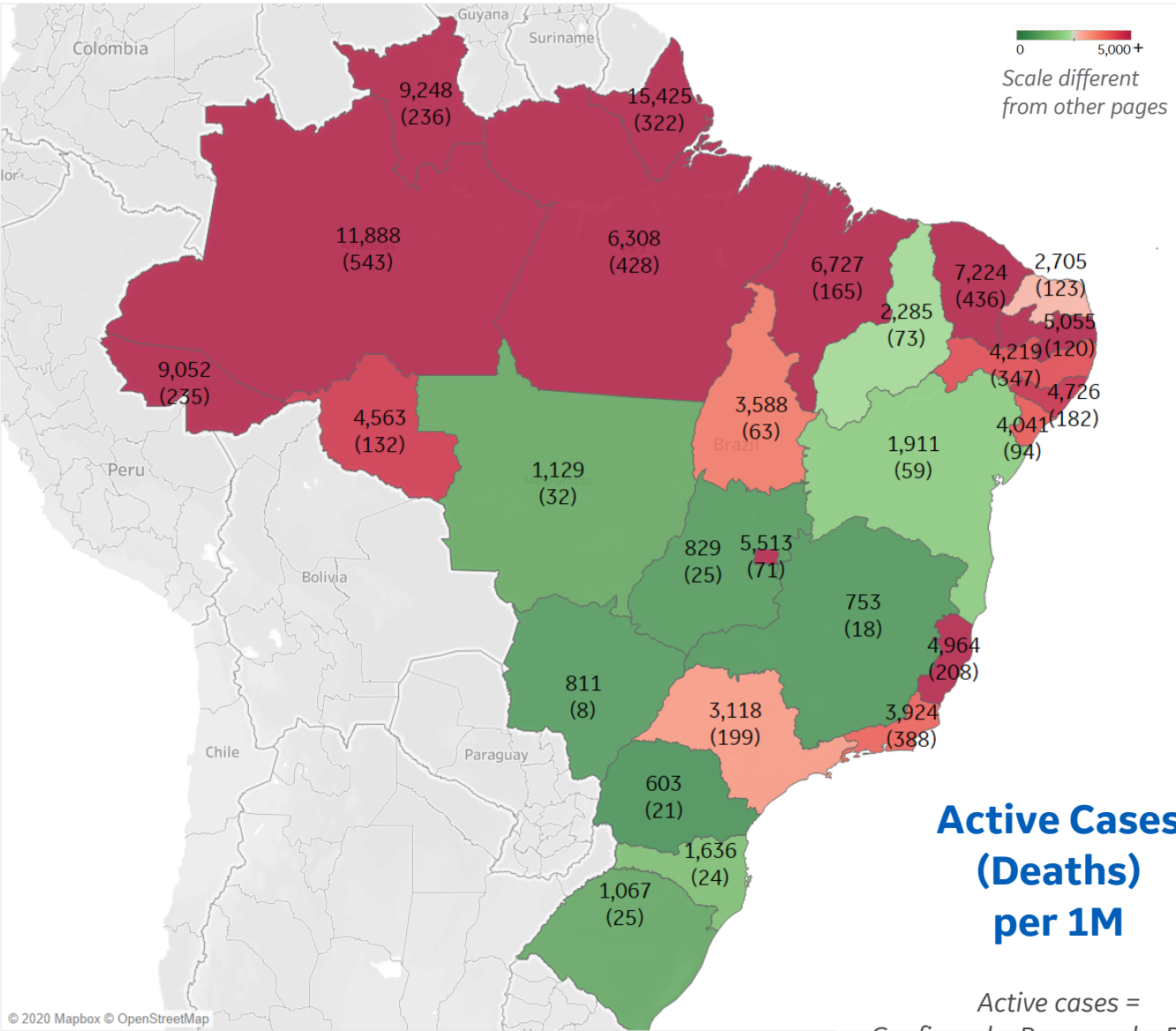
Per 1M in Region

	Today	Change
Active Cases	1,747	+3%
Confirmed	89 new	+3%
Deaths	2 new	+1%
Recovered	32 new	+2%

Most Active Cases per 1M

Amazonas	11,888
Ceará	7,038
Maranhão	6,727
Pará	6,308
Distrito Federal	5,513
Paraíba	5,055
Espírito Santo	4,882
Alagoas	4,706
Rondônia	4,563
Pernambuco	4,211

* Excludes regions with population < 1M





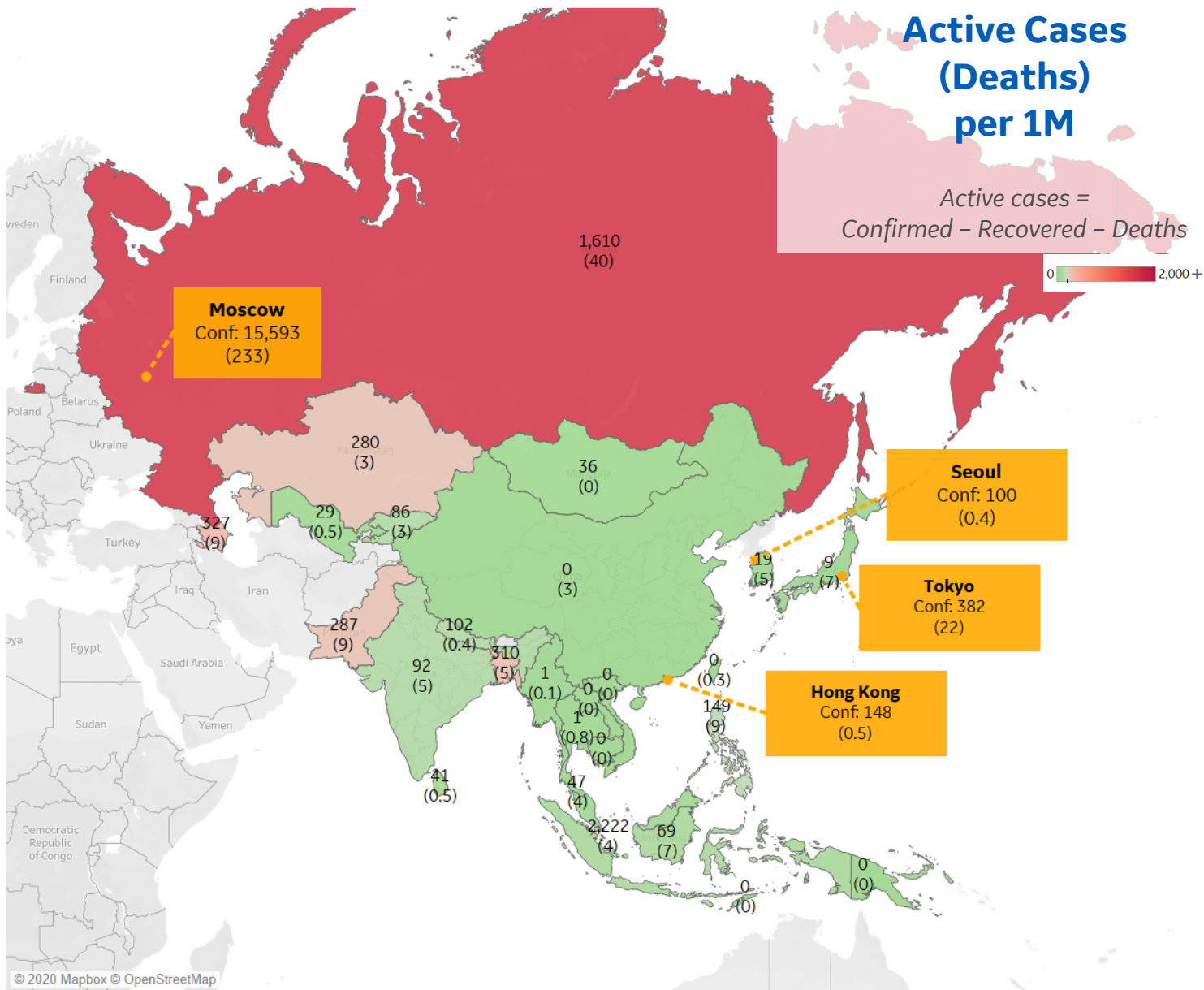
Per 1M in Region

	Today	Change
Active Cases	125	+3%
Confirmed	7 new	+3%
Deaths	0.1 new	+2%
Recovered	3 new	+2%

Most Active Cases per 1M

Singapore	2,222
Russia	1,610
Azerbaijan	327
Bangladesh	310
Pakistan	287
Kazakhstan	280
Philippines	149
Nepal	102
India	92
Kyrgyzstan	86

* Excludes regions with population < 1M





Per 1M in Region

	Today	Change
Active Cases	15	+0.4%
Confirmed	0.2 new	+0.07%
Deaths	0 new	+0%
Recovered	0 new	+0%

Most Active Cases per 1M

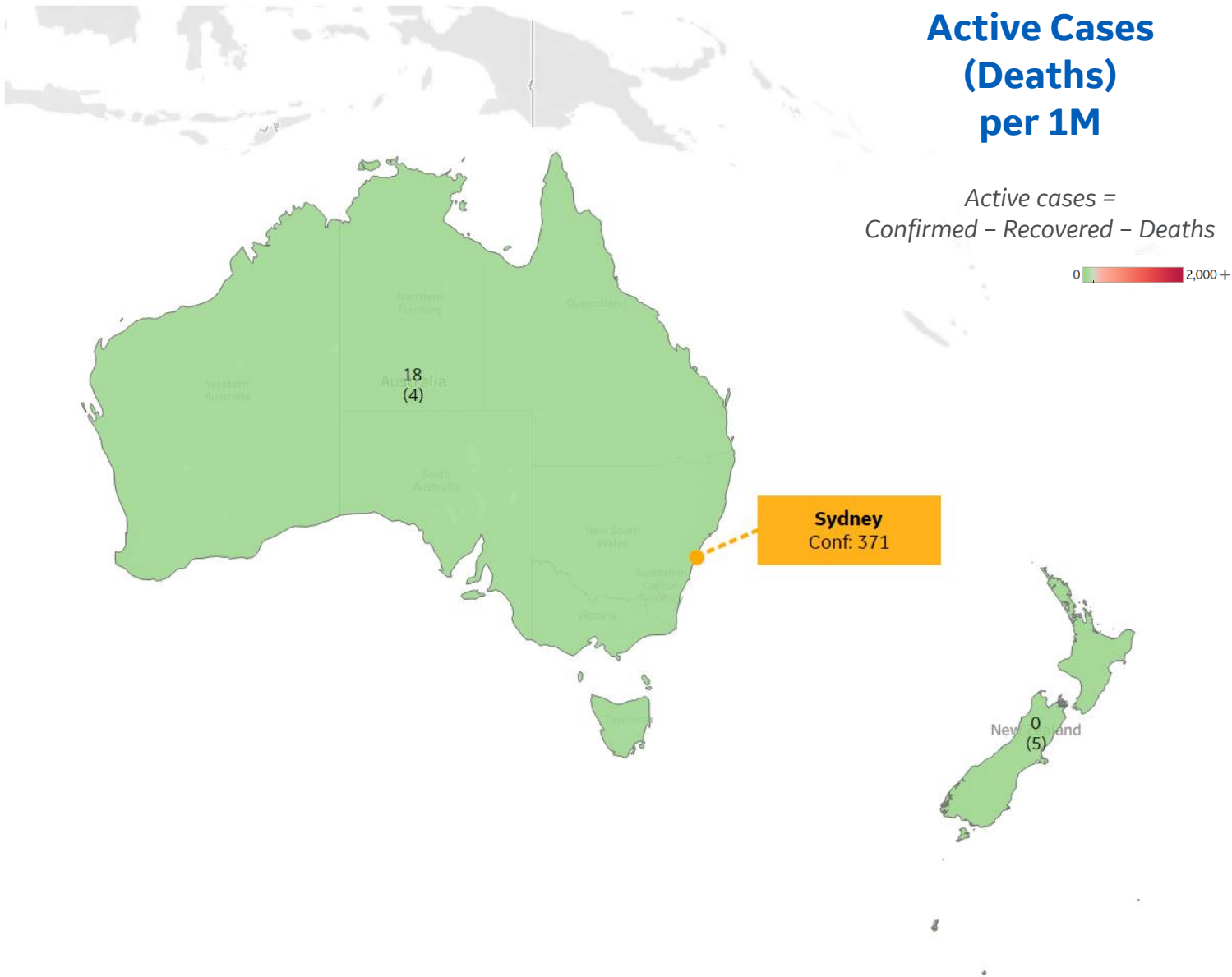
Australia	18
New Zealand	0

* Excludes regions with population < 1M

Active Cases (Deaths) per 1M

Active cases =
Confirmed - Recovered - Deaths

0 2,000 +





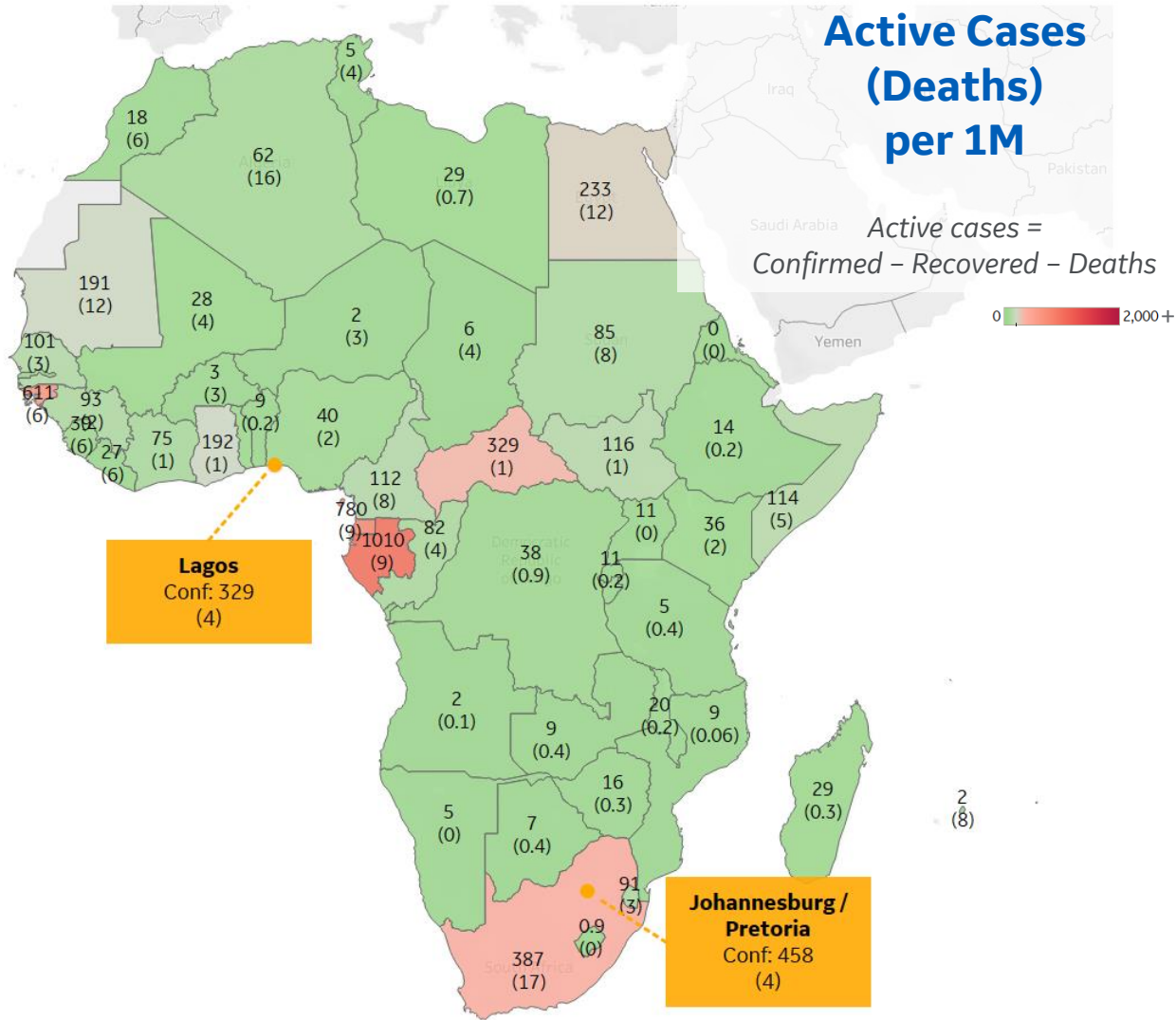
Per 1M in Region

	Today	Change
Active Cases	76	+5%
Confirmed	5 new	+3%
Deaths	0.1 new	+3%
Recovered	1 new	+2%

Most Active Cases per 1M

Gabon	1,010
Eq. Guinea	780
Guinea-Bissau	611
South Africa	387
Central African R..	329
Egypt	233
Ghana	192
Mauritania	191
South Sudan	116
Somalia	114

* Excludes regions with population < 1M





Sources



*** Per 1M = Per 1 Million Population unless otherwise noted*

Johns Hopkins Coronavirus Resource Center:

<https://coronavirus.jhu.edu/map.html>

Worldometer Coronavirus Reporting:

<https://www.worldometers.info/coronavirus/>

Public Health England:

<https://www.gov.uk/government/publications/covid-19-track-coronavirus-cases>

US Department of Homeland Security, Homeland Infrastructure Foundation-Level Data:

<https://hifld-geoplatform.opendata.arcgis.com/datasets/hospitals>

City of New York, NYC Health:

<https://www1.nyc.gov/site/doh/covid/covid-19-data.page>

Chicago Coronavirus Latest Data:

<https://www.chicago.gov/city/en/sites/covid-19/home/latest-data.html>

National Health Commission of the PRC:

<http://www.nhc.gov.cn/xcs/yqtb/202003/bf66696029ba420098164607240074f8.shtml>

Korean Centers for Disease Control and Prevention:

http://www.cdc.go.kr/cdc_eng/

CDC, Severe Outcomes Among Patients with Coronavirus Disease 2019 (COVID-19):

<https://www.cdc.gov/mmwr/volumes/69/wr/mm6912e2.htm>

COVID-19 Information for Switzerland:

<https://www.corona-data.ch/>

Italian Department of Civil Protection, COVID Monitoring:

<http://opendatadpc.maps.arcgis.com/apps/opsdashboard/index.html#/b0c68bce2cce478eaac82fe38d4138b1>

The COVID Tracking Project:

<https://covidtracking.com/data/>

UK Office for National Statistics

<https://www.ons.gov.uk/peoplepopulationandcommunity/birthsdeathsandmarriages/deaths/bulletins/deathsregisteredweeklyinenglandandwalesprovisional/weekending24april2020>

WHO Europe, Surveillance Report:

<http://www.euro.who.int/en/health-topics/health-emergencies/coronavirus-covid-19/weekly-surveillance-report>

WHO Europe, Principles for Transition:

<http://www.euro.who.int/en/media-centre/sections/statements/2020/statement-transition-to-a-new-normal-during-the-covid-19-pandemic-must-be-guided-by-public-health-principles>

CIA World Factbook:

<https://www.cia.gov/library/publications/resources/the-world-factbook/>

Italian Ministry of Health:

<http://www.salute.gov.it/portale/nuovocoronavirus/dettaglioContenutiNuovoCoronavirus.jsp?lingua=italiano&id=5351&area=nuovoCoronavirus&menu=vuoto>

New South Wales Government:

<https://www.health.nsw.gov.au/Infectious/diseases/Pages/covid-19-latest.aspx>

Provincial Health Services Authority of Canada. BC Center for Disease Control:

<http://www.bccdc.ca/about/news-stories/stories/2020/information-on-novel-coronavirus>

Coronavirus Cases in Japan by Prefecture, Nippon Communications Foundation:

<https://www.nippon.com/en/japan-data/h00657/coronavirus-cases-in-japan-by-prefecture.html>

Secretary of Health, Mexico:

<https://www.gob.mx/salud/en>

OECD Economic Outlooks, Statistics:

https://www.oecd-ilibrary.org/economics/data/oecd-economic-outlook-statistics-and-projections_eo-data-en

Public Health Authority of Sweden:

<https://www.folkhalsomyndigheten.se/smittskydd-beredskap/utbrott/aktuella-utbrott/covid-19/bekraftade-fall-i-sverige>

National Public Health Agency of France:

<https://www.santepubliquefrance.fr/regions/ile-de-france/documents/bulletin-regional/2020/covid-19-point-epidemiologique-en-ile-de-france-du-23-avril-2020>

National Public Health Agency of France:

<https://www.santepubliquefrance.fr/regions/ile-de-france/documents/bulletin-regional/2020/covid-19-point-epidemiologique-en-ile-de-france-du-23-avril-2020>

UK data: <https://coronavirus.data.gov.uk/>

Increase in 100 deaths:

<https://www.bbc.com/news/uk-52056534>

Lockdown Extension:

<https://www.bbc.com/news/uk-52313715>

Prime Minister tests positive:

<https://www.bbc.com/news/uk-52060791>

Death toll highest in the UK:

<https://www.cnbc.com/2020/05/05/coronavirus-uk-death-toll-becomes-the-highest-in-europe.html>

Conditional Plan to Reopen:

<https://www.bbc.com/news/uk-52609952>

Schools reopen:

<https://www.bbc.com/news/education-52854688>