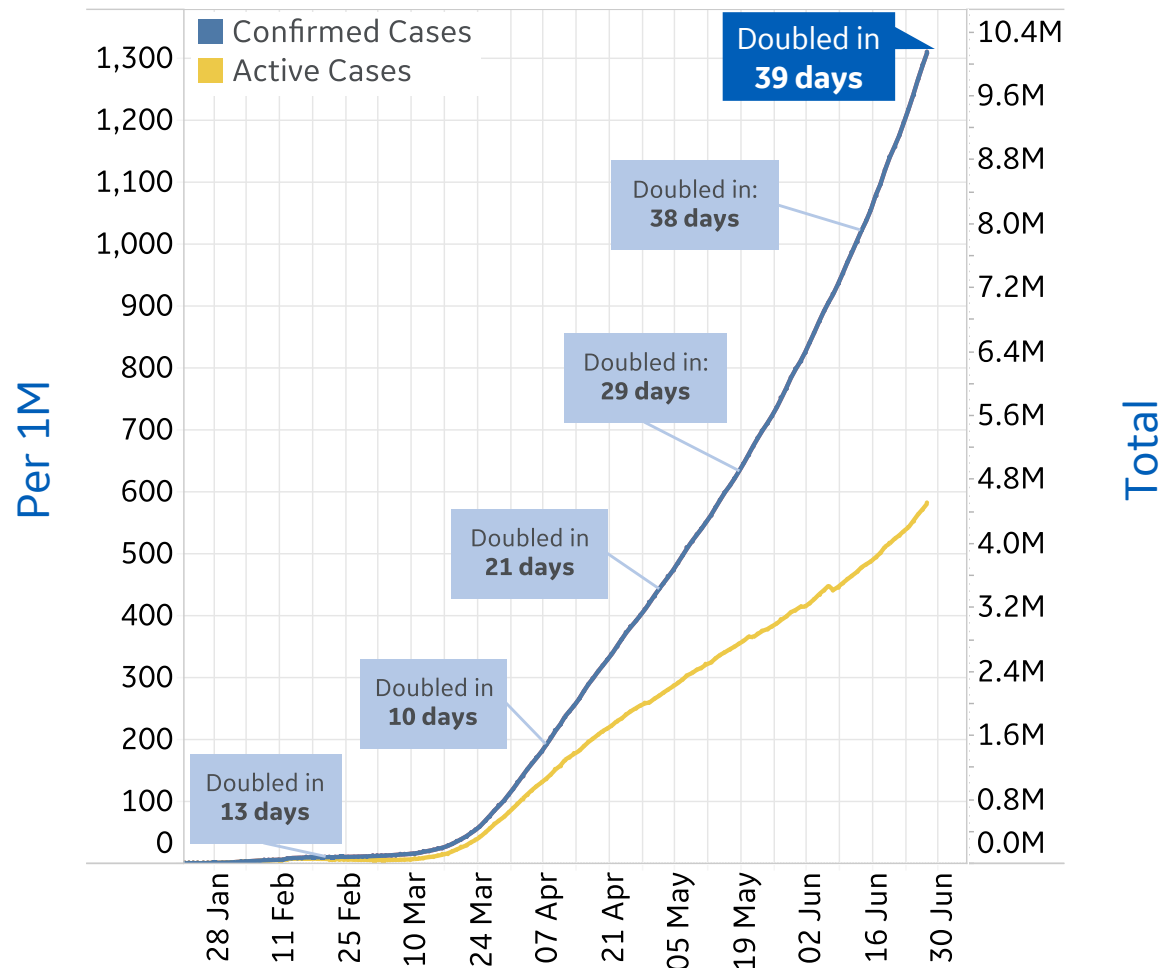




# Global Confirmed & Active Cases

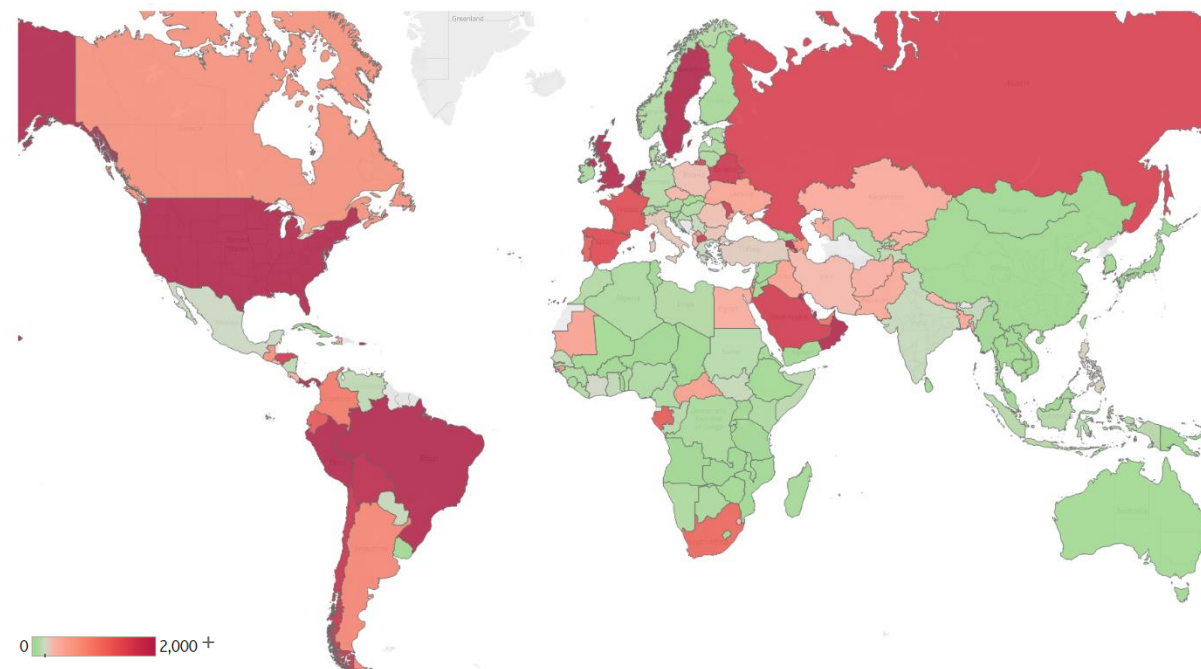


## Trend since 22 Jan



## Today per 1M

Active cases = Confirmed - Recovered - Deaths



<b>Per 1M:</b>	<b>Today</b>	<b>Change</b>
Active Today	589	+1%
Active	8 new	+1%
Confirmed	20 new	+2%
Deaths	0.5 new	+1%
Recovered	12 new	+2%



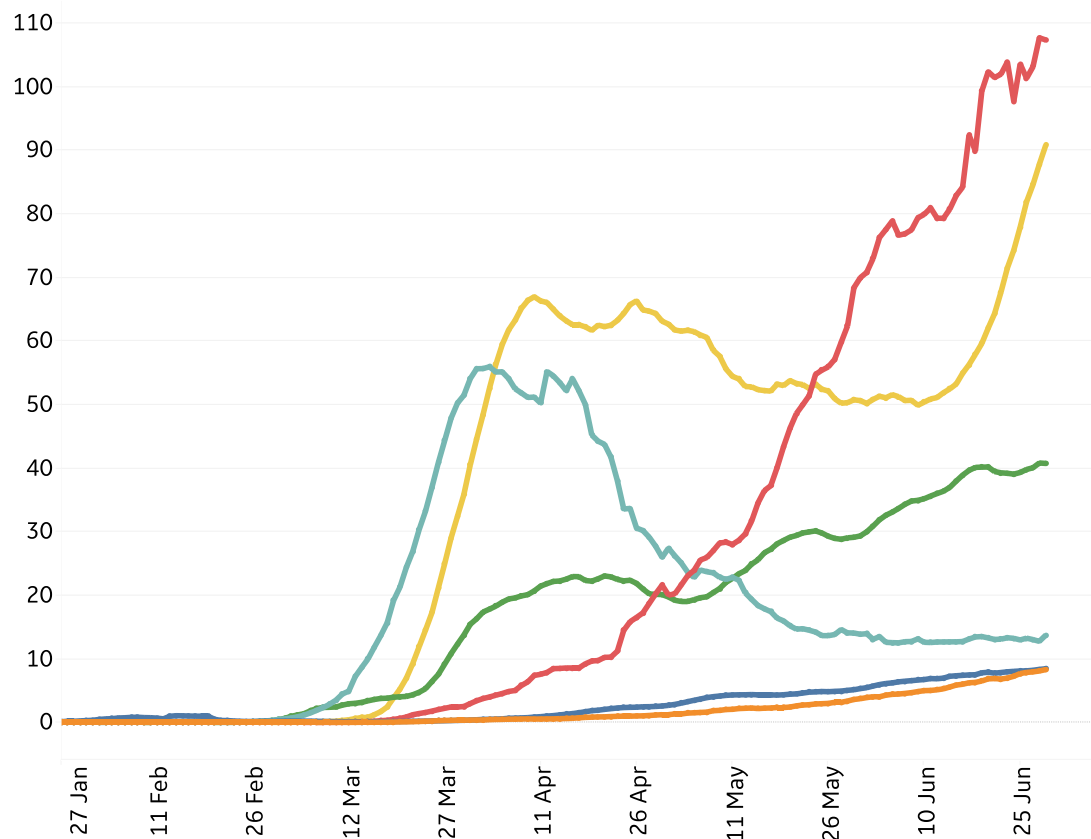
# New Confirmed Cases & New Deaths



Key **North America** **Europe** **Middle East** **Central/South America** **Asia** **Africa**

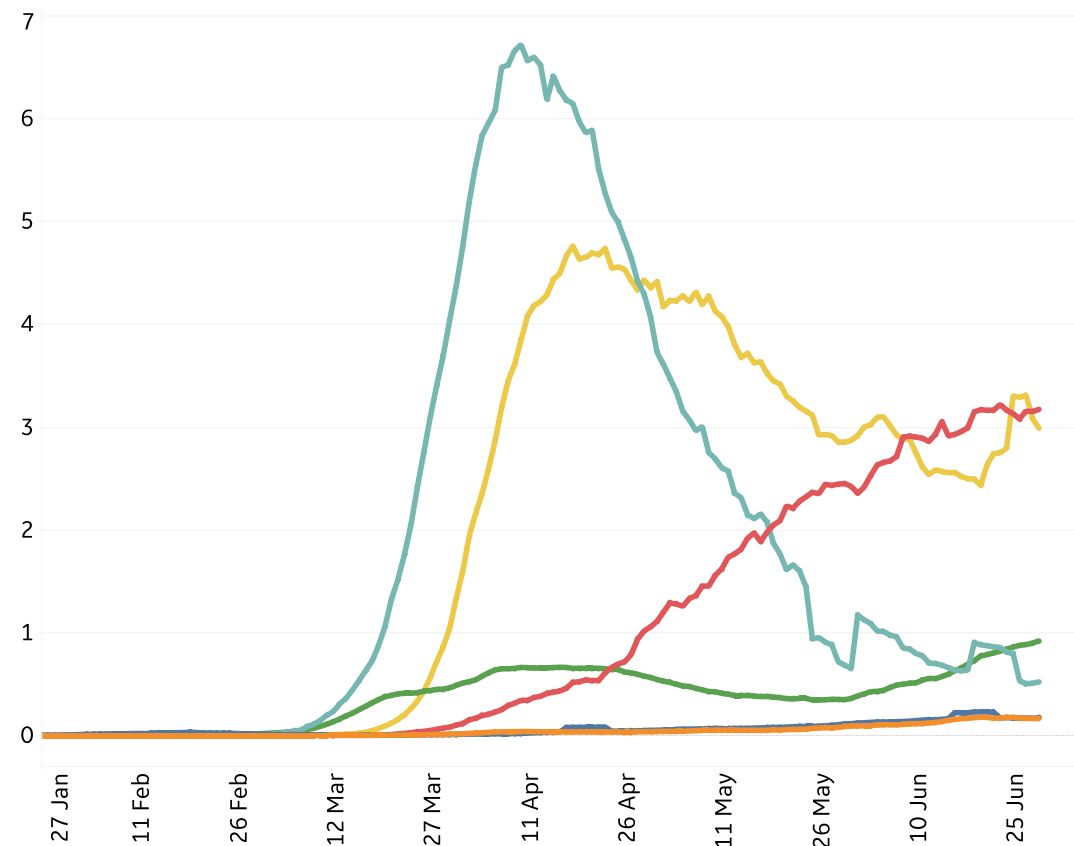
## New Confirmed Cases / 1M

7-day rolling average



## New Deaths / 1M

7-day rolling average





# Top 50 Countries: Per 1M



## 1 - 25

	Active Today	Today			Total since 22 Jan		
		Confirmed	Deaths	Recovered	Total Confirmed	Total Deaths	Total Recovered
Sweden	6,174	251	3	0	6,700	526	0
US	5,315	126	1	61	7,826	381	2,131
Qatar	5,145	241	1	510	33,011	39	27,827
UK	3,954	12	0	0	4,618	643	20
Armenia	3,846	163	2	61	8,480	146	4,487
Panama	3,840	255	4	29	7,598	144	3,614
Oman	3,225	178	1	240	7,649	33	4,391
Peru	3,085	89	6	96	8,564	288	5,191
Bahrain	3,072	314	1	241	15,420	49	12,299
Belgium	2,993	6	0	0	5,294	840	1,462
Brazil	2,597	113	3	55	6,437	274	3,565
Netherlands	2,575	5	0	0	2,943	358	11
Kuwait	2,075	136	0	192	10,660	82	8,503
Bolivia	1,895	51	5	35	2,752	92	765
Chile	1,793	210	3	207	14,438	292	12,354
Belarus	1,713	33	0	20	6,539	41	4,785
North Macedo..	1,672	62	6	54	2,980	143	1,165
Saudi Arabia	1,658	113	1	68	5,355	46	3,651
Honduras	1,653	74	1	9	1,900	49	198
Moldova	1,634	27	1	37	4,055	133	2,288
Russia	1,565	46	1	30	4,387	63	2,760
Spain	1,502	4	0	0	5,325	606	3,216
France	1,464	N/A	1	5	3,087	457	1,166
Ecuador	1,345	23	4	21	3,155	255	1,555
Gabon	1,317	83	1	42	2,423	19	1,087

## 26 - 50

	Active Today	Today			Total since 22 Jan		
		Confirmed	Deaths	Recovered	Total Confirmed	Total Deaths	Total Recovered
Portugal	1,289	26	0	14	4,110	154	2,668
Dom. Rep.	1,272	41	1	13	2,933	68	1,593
South Africa	1,199	103	1	29	2,432	43	1,191
UAE	1,098	45	0	68	4,878	32	3,749
Eq. Guinea	1,036	0	0	0	1,426	23	367
Colombia	990	0	0	0	1,808	64	754
Singapore	966	35	0	82	7,463	4	6,493
Argentina	882	52	1	23	1,378	28	468
EU	841	15	0	4	2,858	299	1,718
Israel	798	79	0	16	2,824	37	1,989
Canada	755	17	1	27	2,804	229	1,820
Guatemala	753	27	1	1	972	42	177
Azerbaijan	729	54	1	34	1,674	20	924
Guinea-Bissau	667	20	1	0	840	12	161
Kosovo	652	275	7	205	1,451	27	772
Central Africa..	578	38	0	15	748	10	160
Mauritania	562	19	0	17	911	28	322
Iraq	555	43	2	46	1,172	46	571
Ukraine	542	16	0	2	1,018	27	450
Bos. and Herz.	541	119	2	8	1,318	56	721
Bangladesh	499	24	0	13	861	11	351
Pakistan	482	13	1	14	948	19	446
Kazakhstan	459	26	1	4	1,162	10	693
Egypt	449	15	1	4	652	28	175
Total World	589	20	0	12	1,330	65	676

Several countries are revising and updating case counts

Confirmed cases in **Brazil** increased 19% over the last 7 days

Top 50 countries selected by Active Cases / 1M  
Excluded countries with population < 1M



# Top 50 Countries: Raw Volume



## 1 - 25

	Active Cases	Today			Total since 22 Jan		
		Confirmed	Deaths	Recovered	Total Confirmed	Total Deaths	Total Recovered
US	1,759,209	41,556	337	20,039	2,590,552	126,140	705,203
Brazil	552,070	24,052	692	11,793	1,368,195	58,314	757,811
EU	374,513	6,772	126	1,629	1,272,412	132,975	764,924
UK	268,443	830	25	4	313,470	43,659	1,368
Russia	228,316	6,683	92	4,342	640,246	9,152	402,778
India	215,125	18,522	418	13,099	566,840	16,893	334,822
Pakistan	106,530	2,825	137	3,096	209,337	4,304	98,503
Peru	101,702	2,946	187	3,161	282,365	9,504	171,159
France	95,582	2,046	35	350	201,522	29,816	76,124
Bangladesh	82,238	4,014	45	2,053	141,801	1,783	57,780
Spain	70,248	200	3	0	248,970	28,346	150,376
South Africa	71,121	6,130	73	1,689	144,264	2,529	70,614
Sweden	62,357	2,530	30	0	67,667	5,310	0
Saudi Arabia	57,719	3,943	48	2,363	186,436	1,599	127,118
Colombia	50,394	0	0	0	91,995	3,256	38,345
Egypt	45,931	1,566	83	412	66,754	2,872	17,951
Netherlands	44,121	78	2	0	50,433	6,126	186
Argentina	39,850	2,335	48	1,004	62,268	1,280	21,138
Belgium	34,688	66	0	0	61,361	9,732	16,941
Chile	34,270	4,017	66	3,944	275,999	5,575	236,154
Canada	28,504	637	46	1,009	105,830	8,628	68,698
Iran	28,355	2,536	162	2,870	225,205	10,670	186,180
Indonesia	28,487	1,082	51	864	55,092	2,805	23,800
Philippines	25,227	983	11	270	36,438	1,255	9,956
Ecuador	23,733	410	73	372	55,665	4,502	27,430

## 26 - 50

	Active Cases	Today			Total since 22 Jan		
		Confirmed	Deaths	Recovered	Total Confirmed	Total Deaths	Total Recovered
Ukraine	23,698	682	19	94	44,538	1,161	19,679
Mexico	23,389	3,805	473	5,501	220,657	27,121	170,147
Iraq	22,338	1,749	83	1,852	47,151	1,839	22,974
Bolivia	22,126	601	57	411	32,125	1,071	8,928
Turkey	21,689	1,374	18	1,214	198,613	5,115	171,809
Afghanistan	16,571	271	12	1,330	31,238	733	13,934
Panama	16,570	1,099	16	125	32,785	620	15,595
Italy	16,496	126	6	305	240,436	34,744	189,196
Oman	16,469	910	6	1,222	39,060	169	22,422
Belarus	16,190	315	4	186	61,790	387	45,213
Nigeria	15,158	566	8	395	25,133	573	9,402
Qatar	14,823	693	3	1,468	95,106	113	80,170
Dom. Rep.	13,803	443	7	138	31,816	733	17,280
Portugal	13,139	266	4	139	41,912	1,568	27,205
Poland	11,813	247	6	349	34,154	1,444	20,897
UAE	10,856	449	1	665	48,246	314	37,076
Kuwait	8,861	582	2	819	45,524	350	36,313
Germany	8,296	349	8	113	195,042	8,976	177,770
Romania	6,036	269	22	98	26,582	1,634	18,912
Singapore	5,650	202	0	477	43,661	26	37,985
Bahrain	5,227	534	1	411	26,239	84	20,928
Switzerland	590	35	0	0	31,652	1,962	29,100
China	520	23	0	10	84,780	4,641	79,619
Ireland	363	23	0	0	25,462	1,735	23,364
Total World	4,560,734	156,261	3,612	94,914	10,302,052	505,505	5,235,813

Several countries are revising and updating case counts

25% of global deaths are in the **US**

Top 50 countries selected by Total Confirmed Cases  
Excluded countries with population < 1M



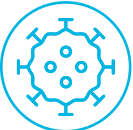








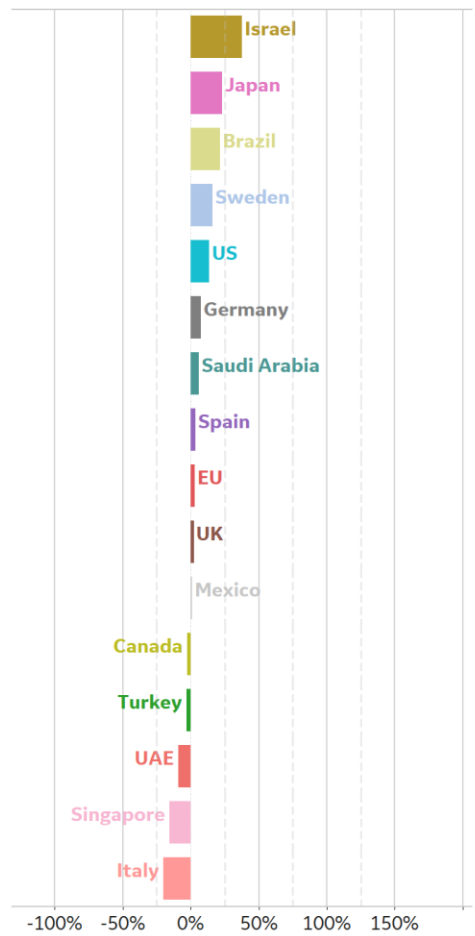




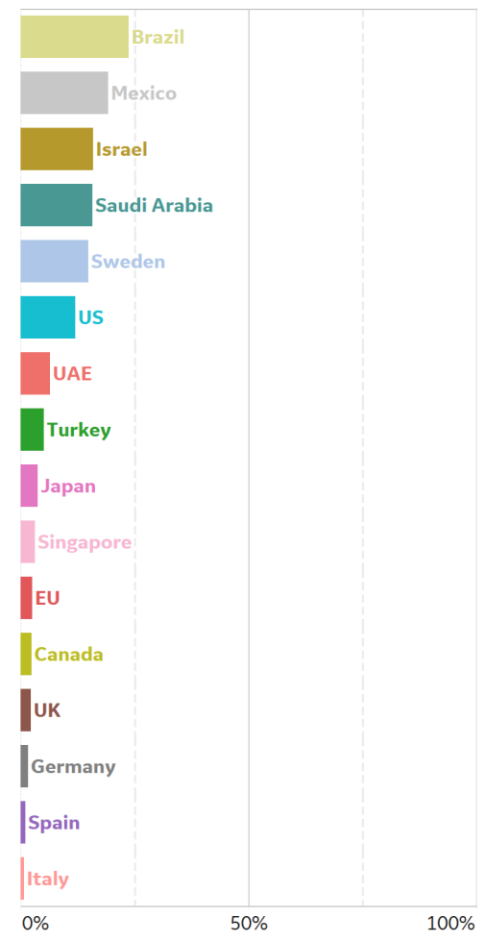
# % Change in Case Volume in Select Countries

## Over Previous 7 days

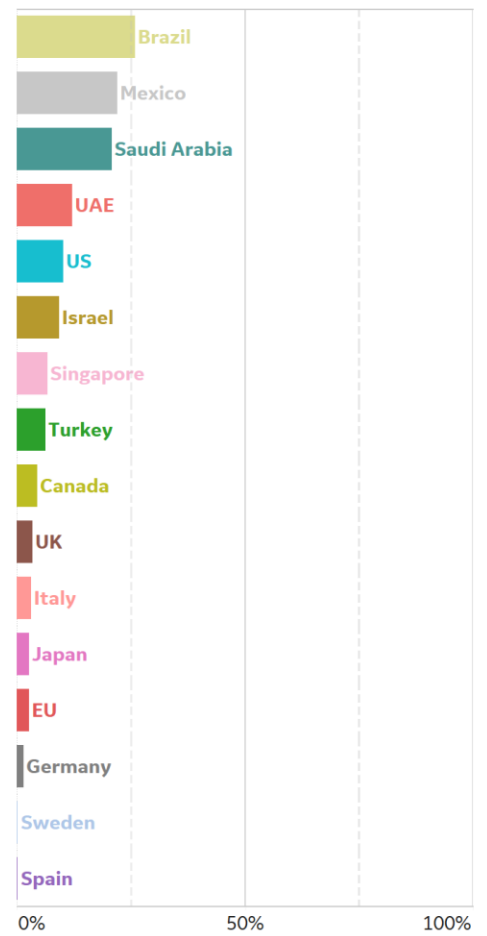
### Active Cases



### Confirmed Cases



### Reported Recoveries



### Reported Deaths

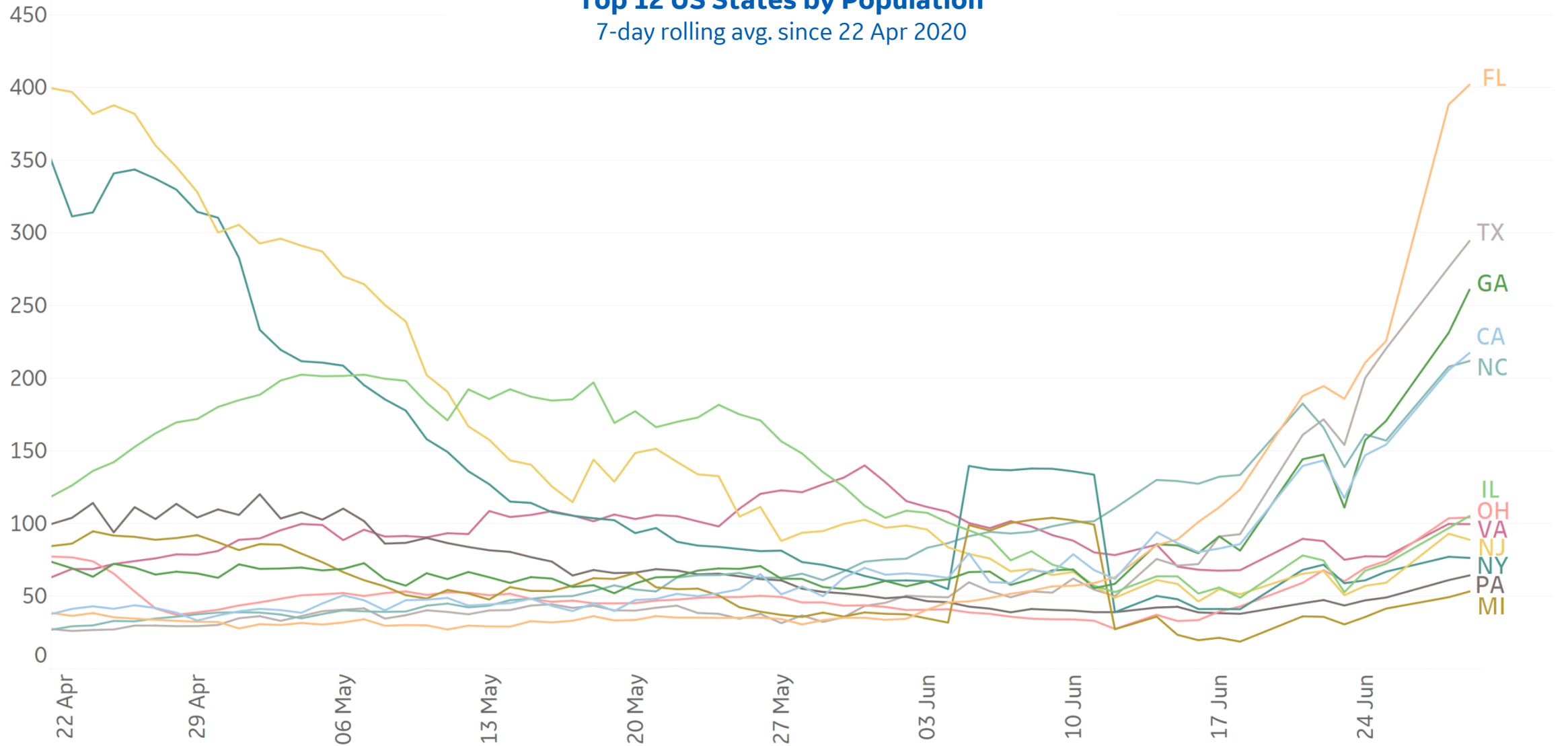




# New Confirmed Cases in US States



### Daily New Confirmed Cases / 1M Top 12 US States by Population 7-day rolling avg. since 22 Apr 2020



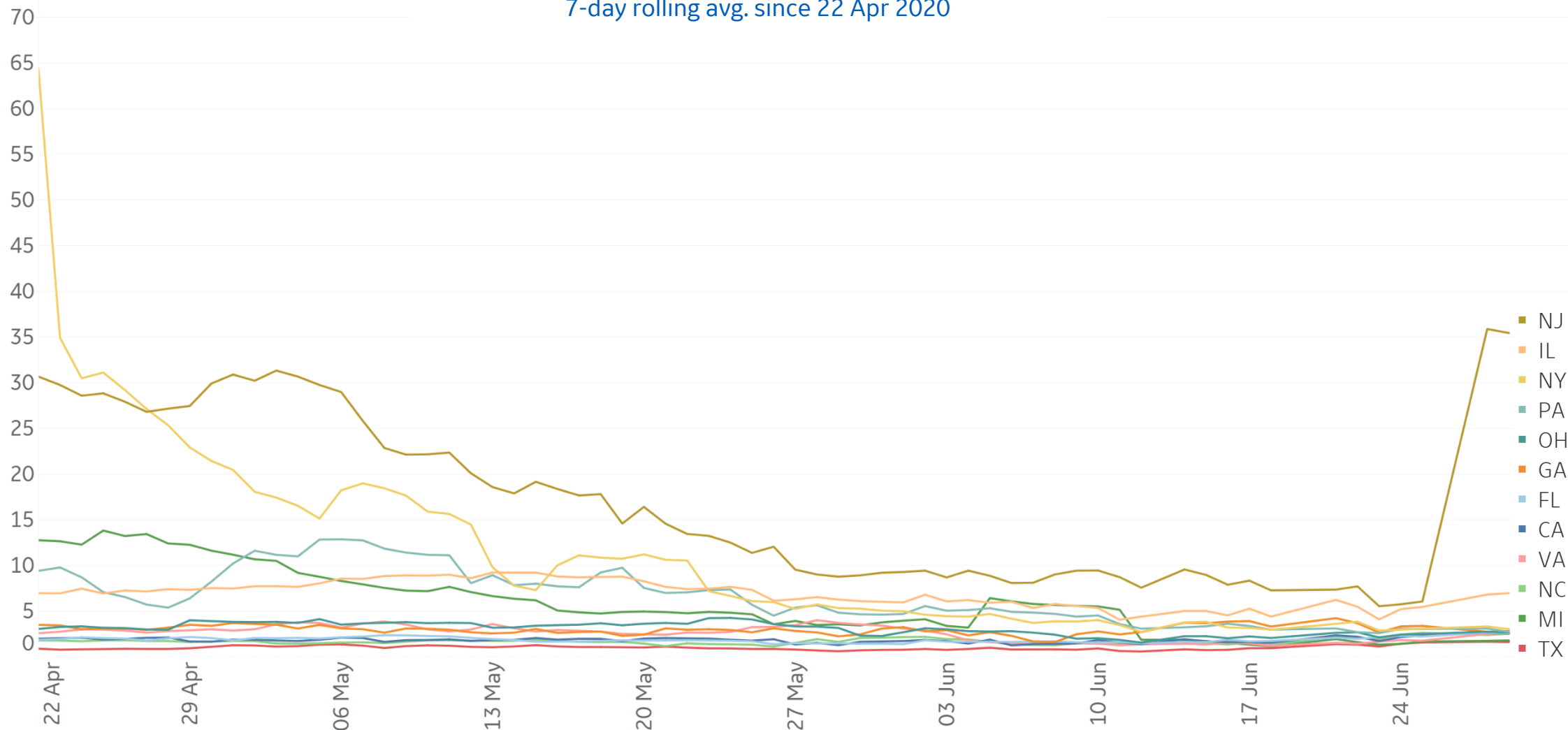


# New Deaths in US States



### Daily New Deaths / 1M Top 12 US States by Population

7-day rolling avg. since 22 Apr 2020

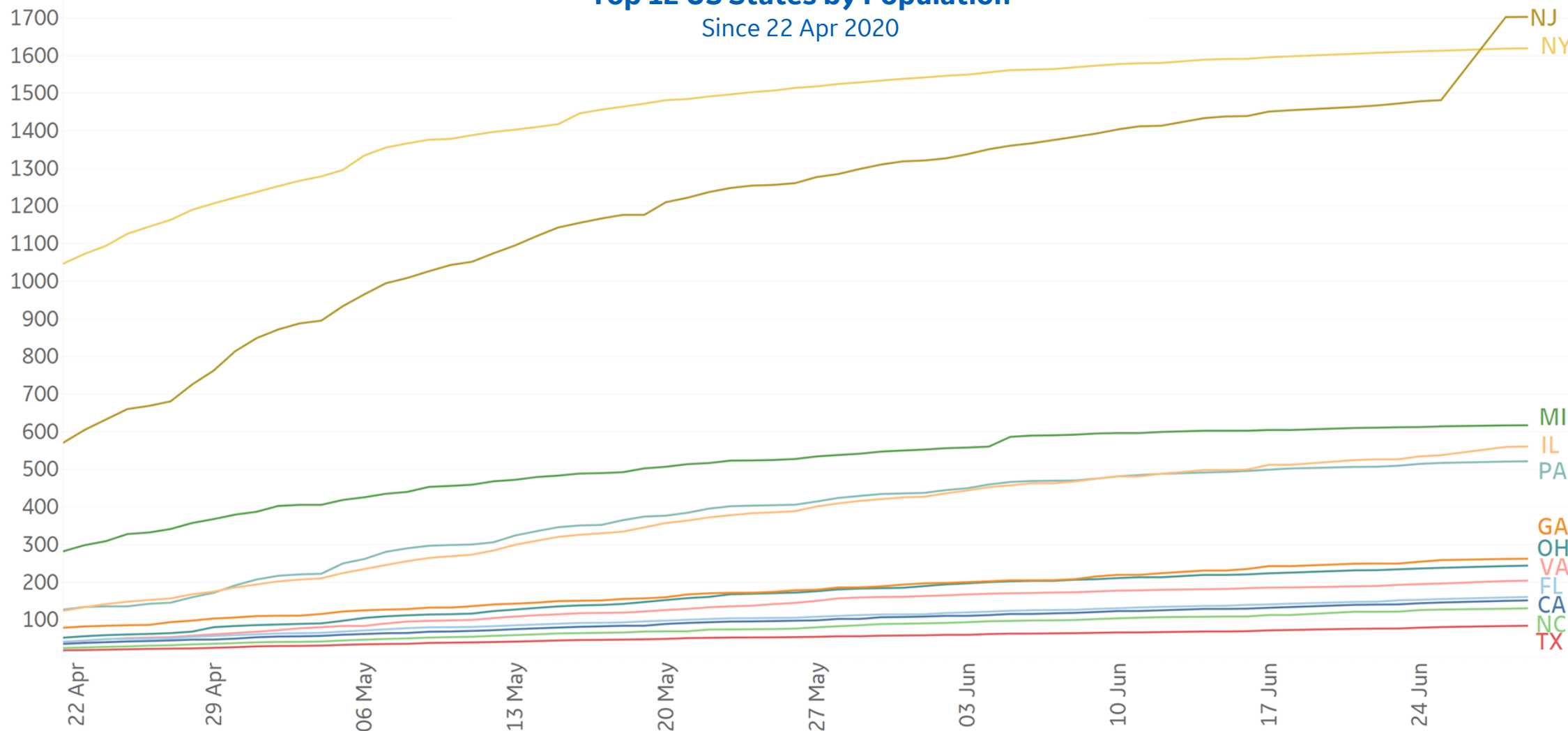


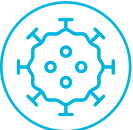


# Cumulative Deaths in US States



## Cumulative Deaths / 1M Top 12 US States by Population Since 22 Apr 2020

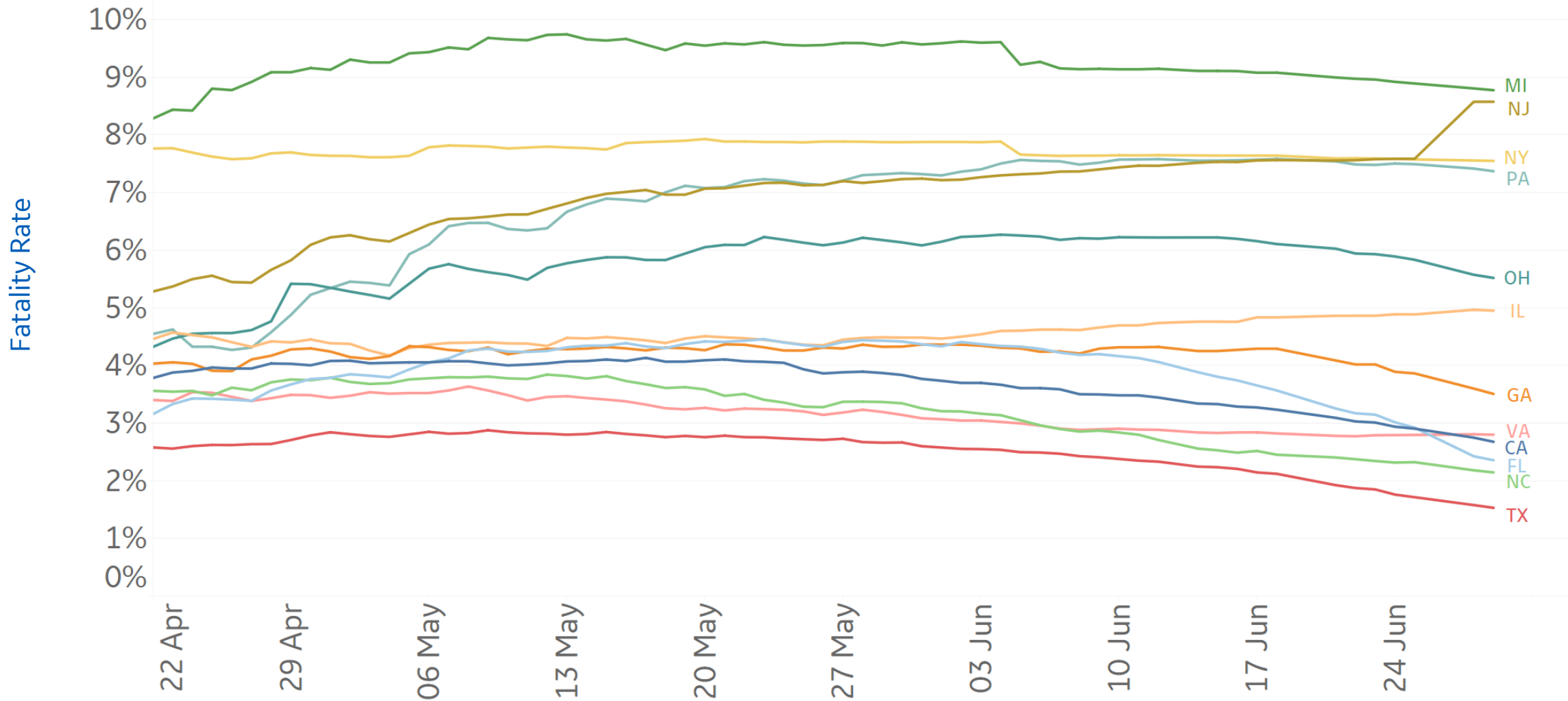




# Fatality Rate in US States



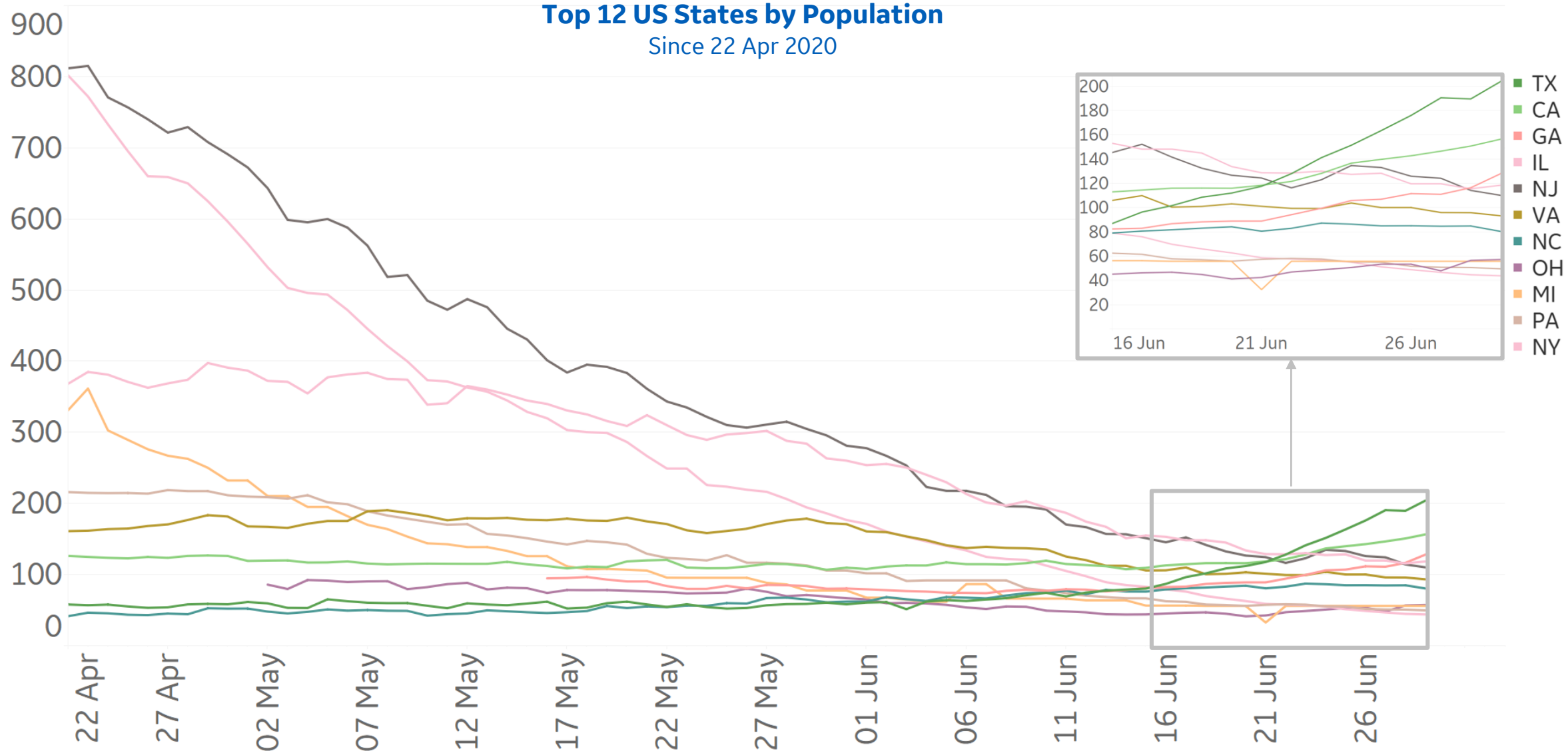
### Deaths / Confirmed Cases Top 12 US States by Population Since 22 Apr 2020

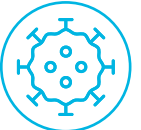




# Current Hospitalizations in US States

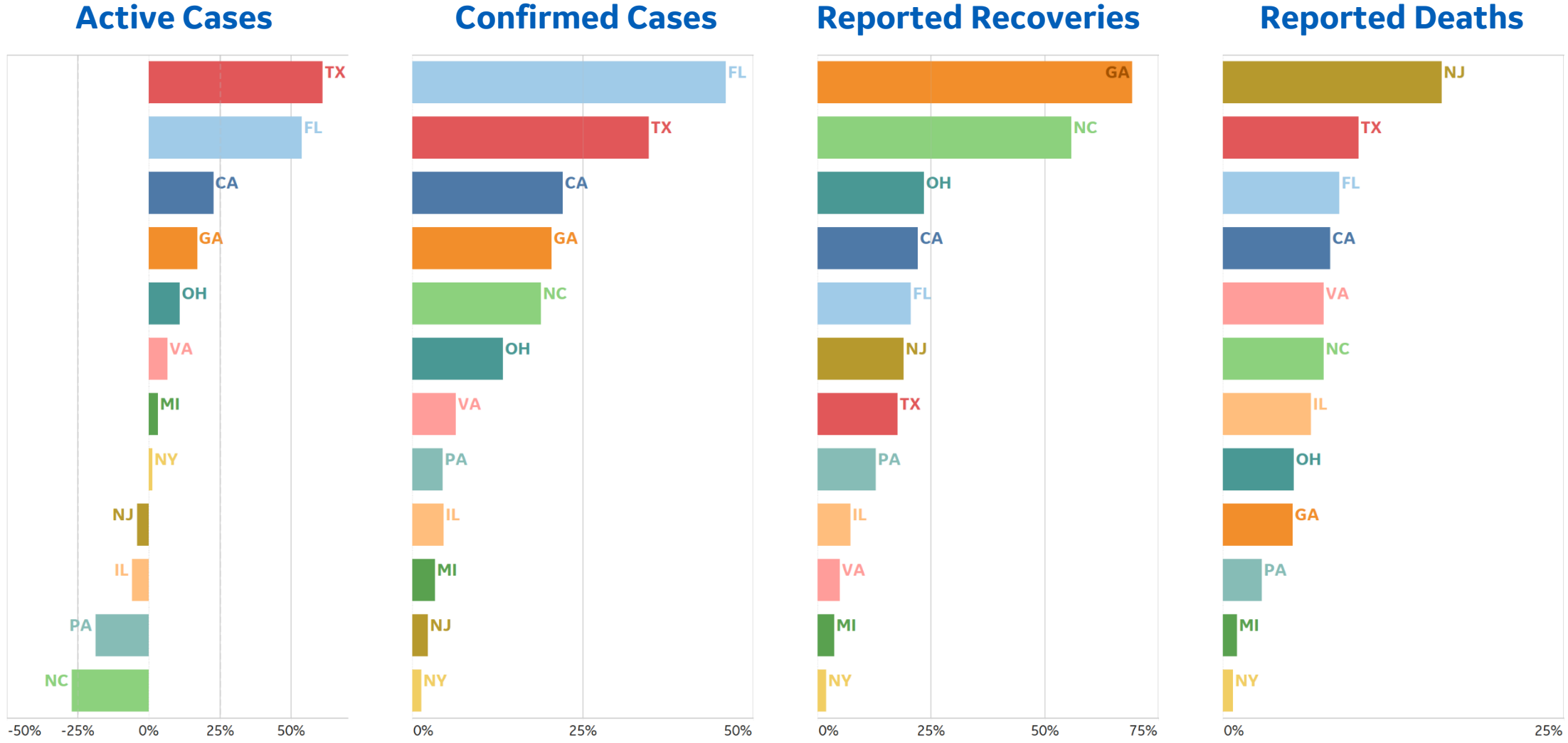
### Current Hospitalizations / 1M Top 12 US States by Population Since 22 Apr 2020





# % Change in Case Volume in US States

## Over Previous 7 days Top 12 US States by Population









## Per 1M in Region

	Today	Change
Active Cases	3,691	+0.3%
Confirmed	12 new	+0.3%
Deaths	0.3 new	+0.1%
Recovered	0 new	+0%

## Most Active Cases per 1M

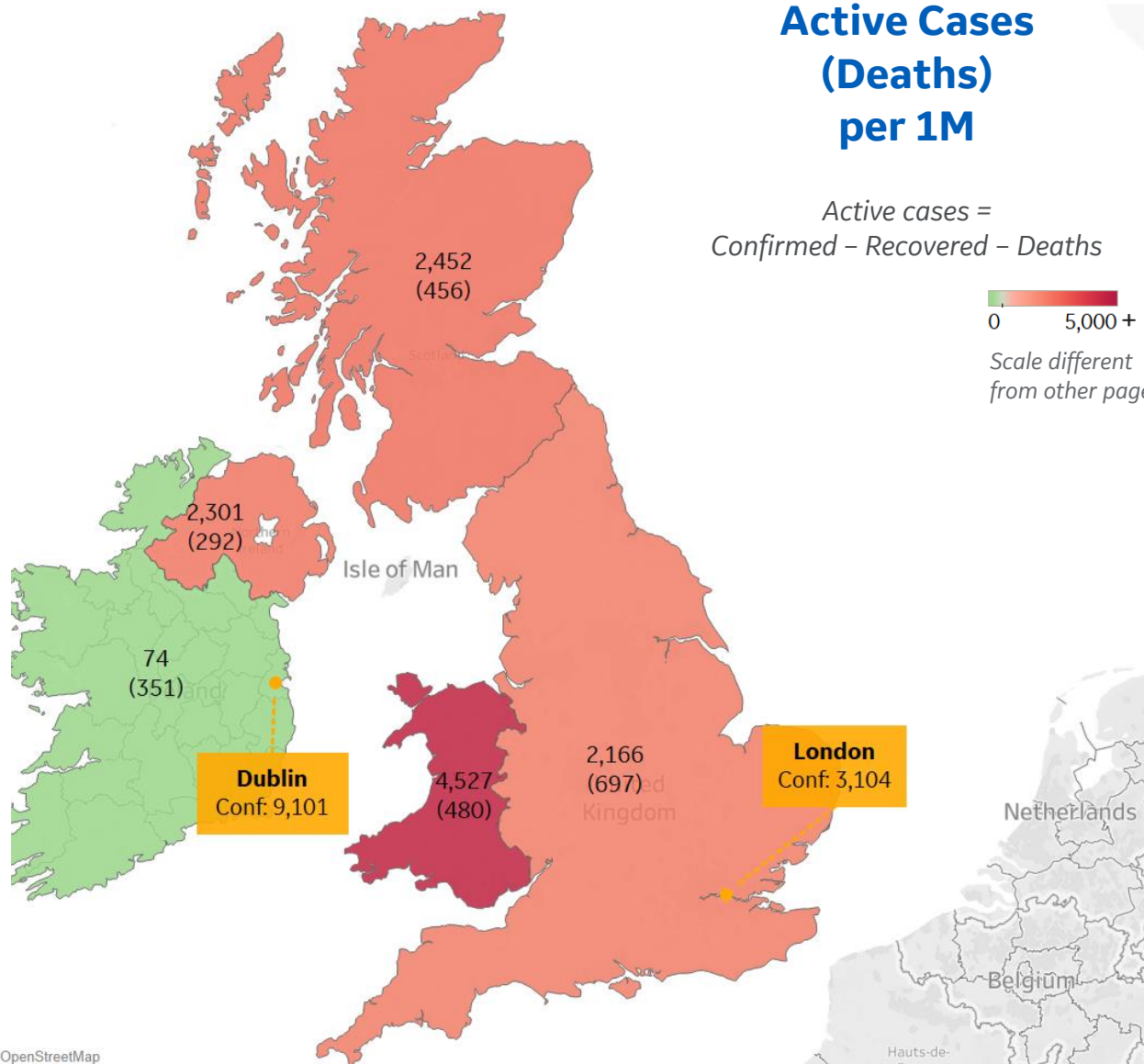
Wales	4,527
Scotland	2,452
Northern Ireland	2,301
England	2,166
Ireland	74

## Active Cases (Deaths) per 1M

Active cases =  
Confirmed - Recovered - Deaths

0 5,000+

Scale different  
from other pages



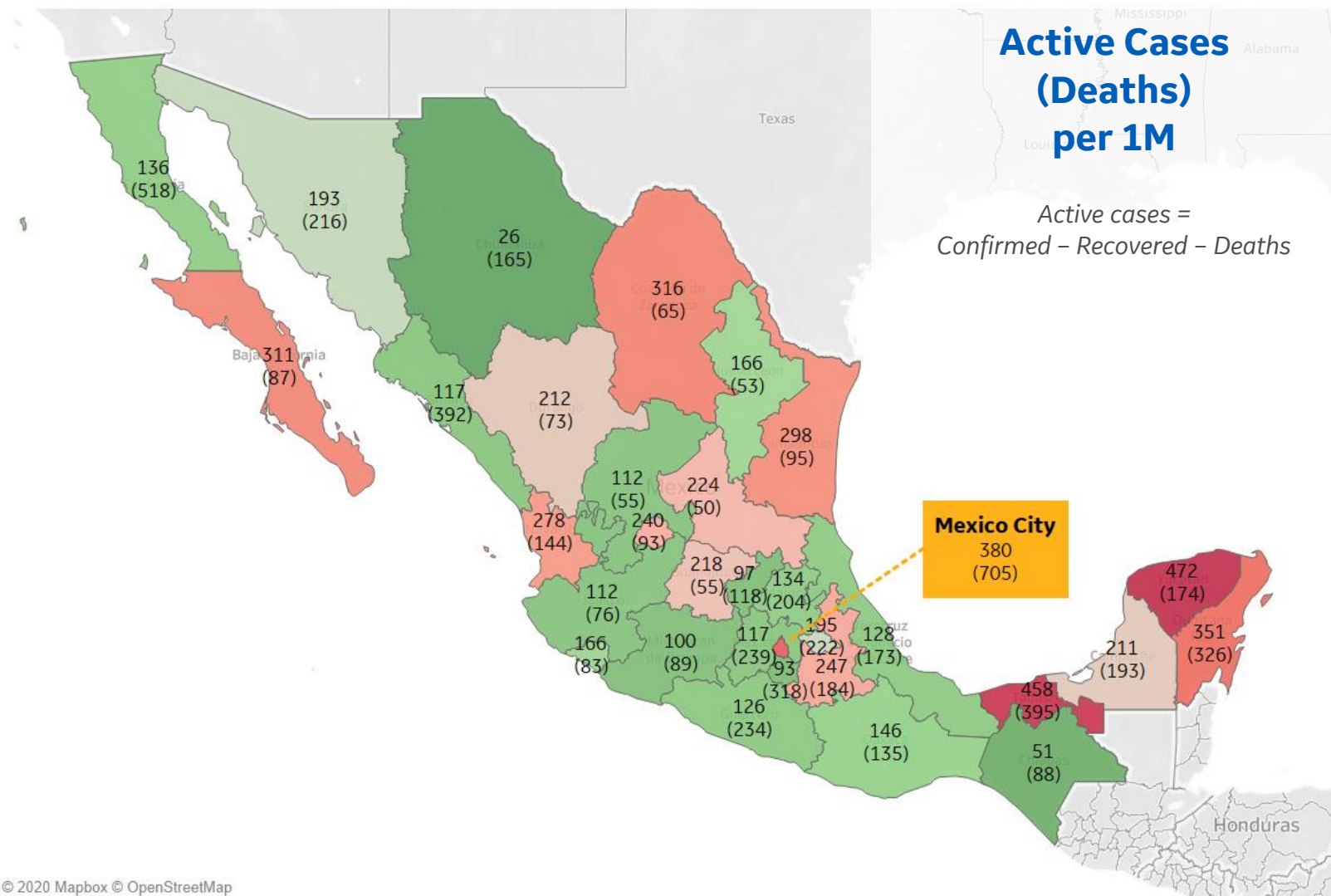


## Per 1M in Region

	Today	Change
Active Cases	181	-8%
Confirmed	30 new	+2%
Deaths	4 new	+2%
Recovered	43 new	+3%

## Most Active Cases per 1M

Yucatan	472
Tabasco	458
Distrito Federal	380
Quintana Roo	351
Coahuila	316
Baja California Sur	311
Tamaulipas	298
Nayarit	278
Puebla	247
Aguascalientes	240





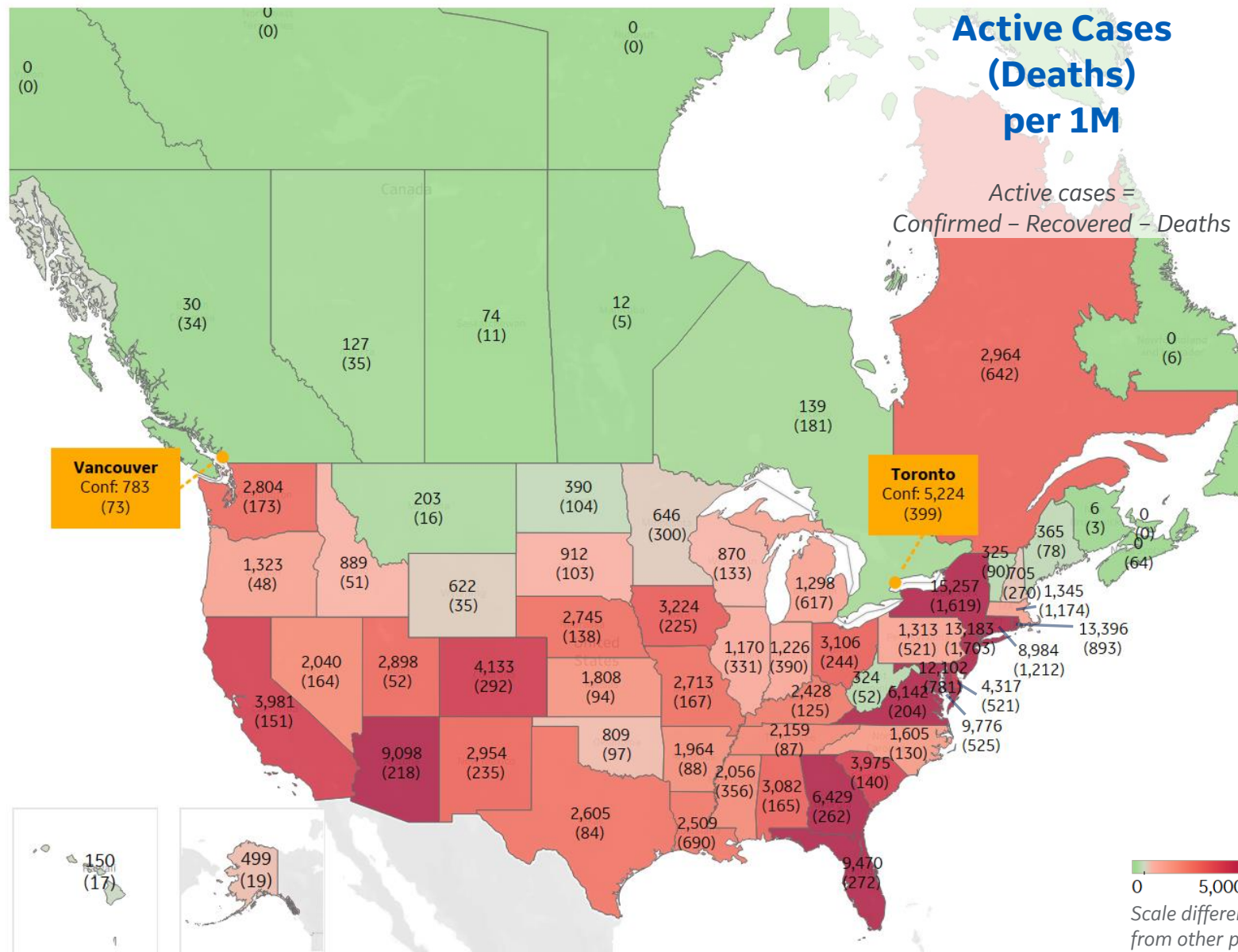


## Per 1M in Region

	Today	Change
Active Cases	4,848	+1%
Confirmed	114 new	+2%
Deaths	1 new	+0%
Recovered	57 new	+3%

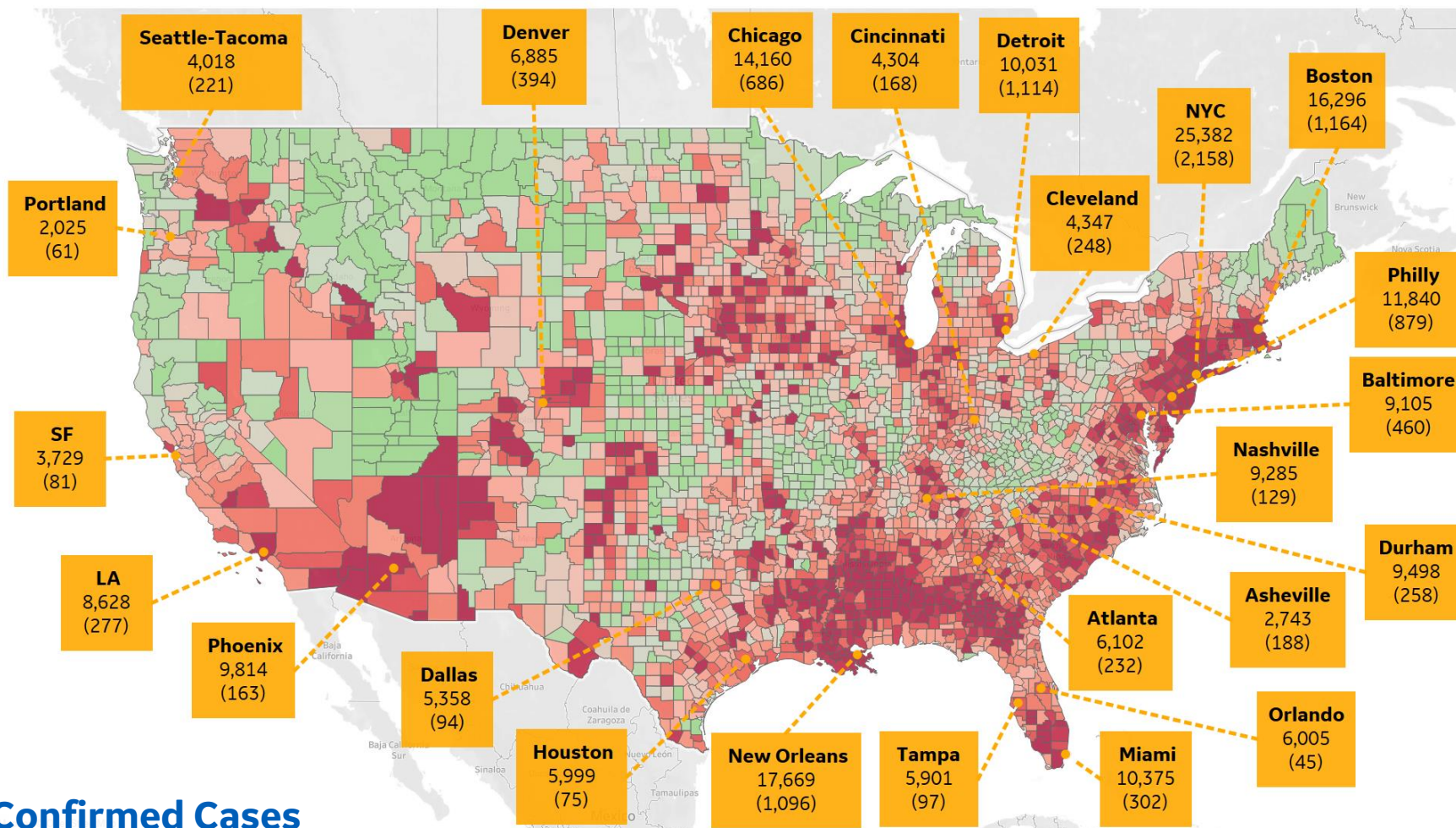
## Most Active Cases per 1M

New York	15,257
Rhode Island	13,396
New Jersey	13,183
DC	12,102
Maryland	9,776
Florida	9,470
Arizona	9,098
Connecticut	8,984
Georgia	6,429
Virginia	6,142



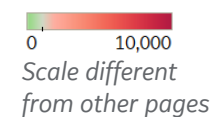


# US by County & Metro, Total to Date



Confirmed Cases  
(Deaths)  
per 1M

Each box reports data for the Metropolitan Statistical Area of the major city listed



## Top 10 Northeast Counties

Total Confirmed Cases / 1M

Rockland County, NY	41,502
Westchester County, NY	35,734
Passaic County, NJ	33,436
Nassau County, NY	30,610
Union County, NJ	29,356
Hudson County, NJ	28,423
Suffolk County, NY	27,790
Orange County, NY	27,689
New York City*	25,531
Yakima County, WA	25,262

## Top 10 Other US Counties

Total Confirmed Cases / 1M

Yakima County, WA	25,262
Jefferson Parish, LA	20,503
Prince George's County, MD	19,806
Orleans Parish, LA	19,421
Cook County, IL	17,039
Prince William County, VA	14,740
District of Columbia, DC	14,261
Kane County, IL	13,953
Montgomery County, MD	13,507
Lake County, IL	13,491

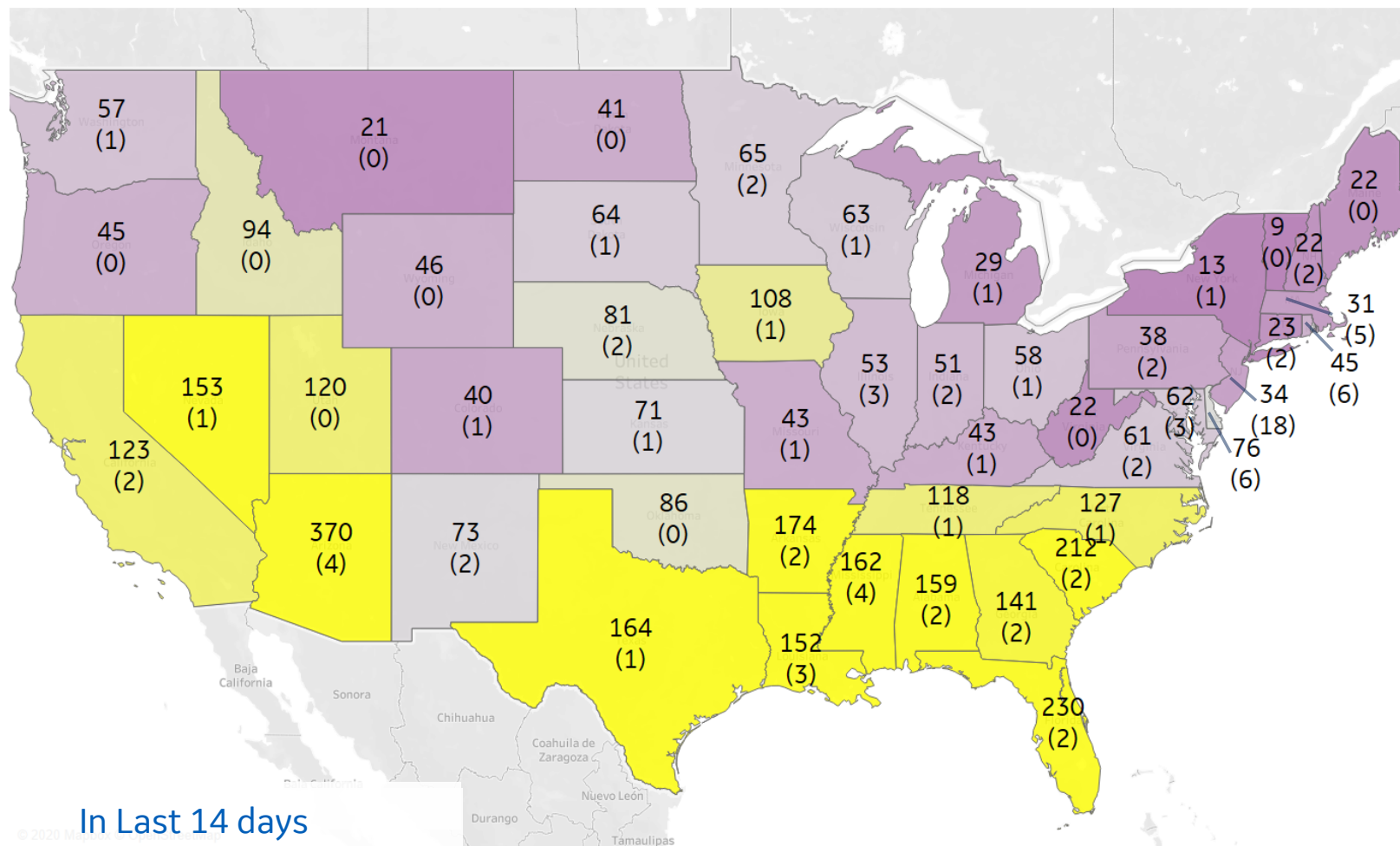
**Note:** Includes counties ≥ 250K population

\* New York City counties aggregated into one reporting area





# US, New in Last 14 days



## Top 10 by New Confirmed

Avg New Confirmed Cases / 1M

Arizona	370
Florida	230
South Carolina	212
Arkansas	174
Texas	164
Mississippi	162
Alabama	159
Nevada	153
Louisiana	152
Georgia	141

## Top 10 by New Deaths

Avg New Deaths / 1M

New Jersey	18
Delaware	6
Rhode Island	6
Massachusetts	5
Arizona	4
District of Columbia	4
Mississippi	4
Illinois	3
Louisiana	3
Maryland	3

In Last 14 days

**Avg New Confirmed Cases  
(Avg New Deaths)  
per 1M**

0 150  
Scale different  
from other pages



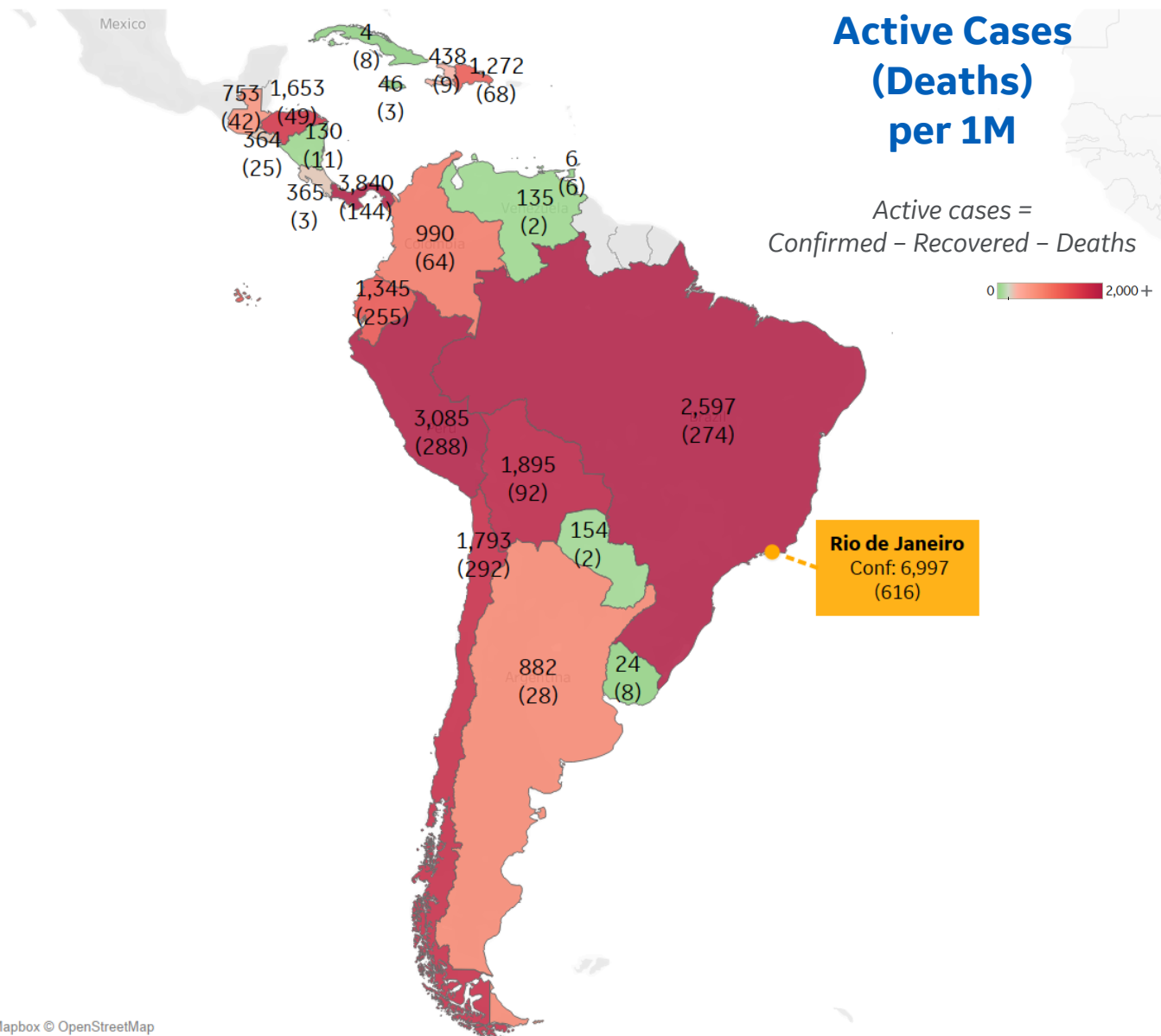
## Per 1M in Region

	Today	Change
Active Cases	1,729	+2%
Confirmed	73 new	+2%
Deaths	2 new	+1%
Recovered	41 new	+2%

## Most Active Cases per 1M

Panama	3,840
Peru	3,085
Brazil	2,597
Bolivia	1,895
Chile	1,793
Honduras	1,653
Ecuador	1,345
Dom. Rep.	1,272
Colombia	990
Argentina	882

\* Excludes regions with population < 1M







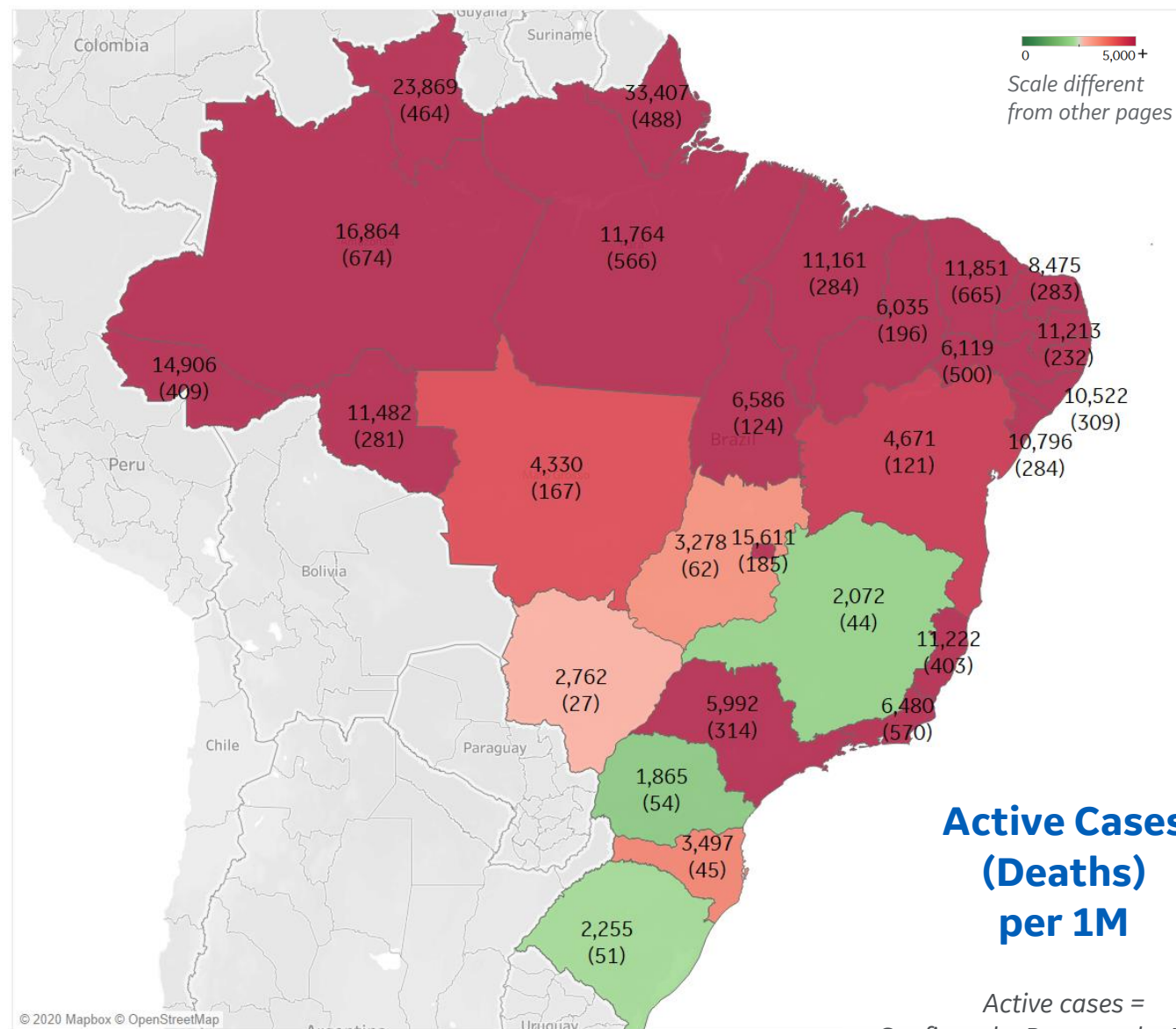
## Per 1M in Region

	Today	Change
Active Cases	2,597	+2%
Confirmed	113 new	+2%
Deaths	3 new	+1%
Recovered	55 new	+2%

## Most Active Cases per 1M

Amazonas	16,864
Distrito Federal	15,611
Ceará	11,851
Pará	11,764
Rondônia	11,482
Espírito Santo	11,222
Paraíba	11,213
Maranhão	11,161
Sergipe	10,796
Alagoas	10,522

\* Excludes regions with population < 1M





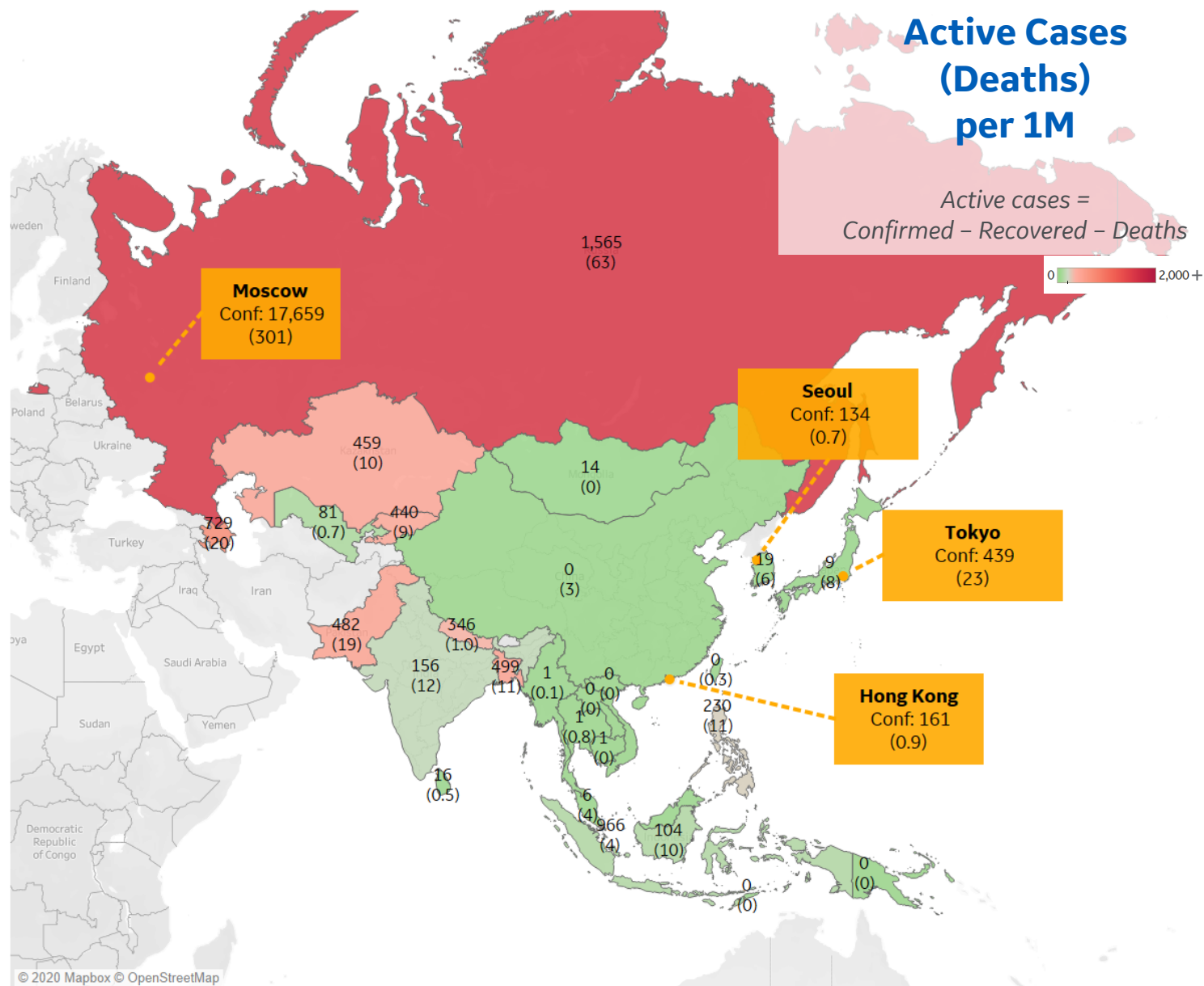
## Per 1M in Region

	Today	Change
Active Cases	167	+1%
Confirmed	8 new	+2%
Deaths	0.2 new	+2%
Recovered	6 new	+2%

## Most Active Cases per 1M

Russia	1,565
Singapore	966
Azerbaijan	729
Bangladesh	499
Pakistan	482
Kazakhstan	459
Kyrgyzstan	440
Nepal	346
Philippines	230
India	156

\* Excludes regions with population < 1M





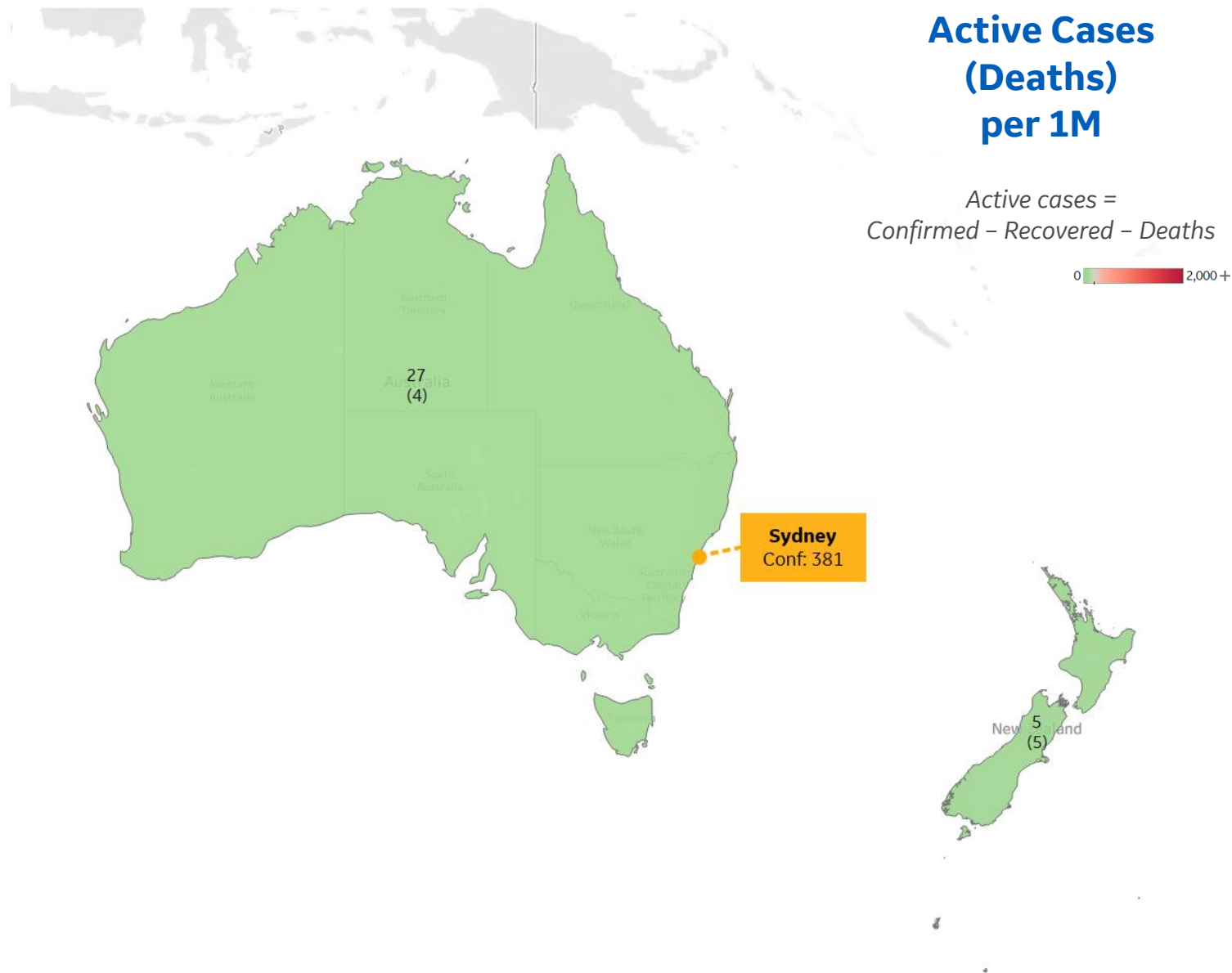
## Per 1M in Region

	Today	Change
Active Cases	23	+6%
Confirmed	2 new	+0.8%
Deaths	0 new	+0%
Recovered	1 new	+0.4%

## Most Active Cases per 1M

Australia	27
New Zealand	5

\* Excludes regions with population < 1M





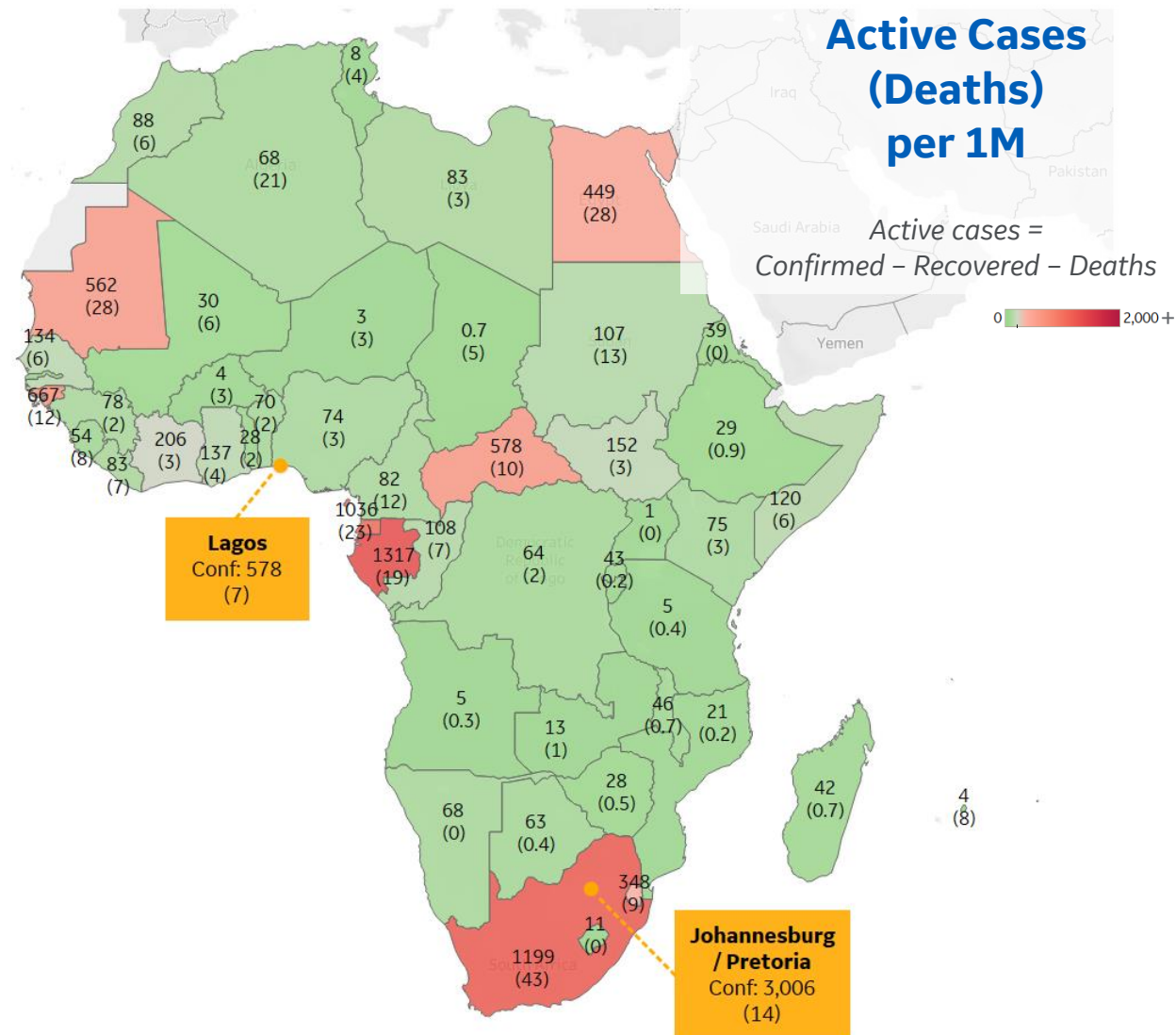
## Per 1M in Region

	Today	Change
Active Cases	147	+3%
Confirmed	8 new	+3%
Deaths	0.2 new	+2%
Recovered	4 new	+3%

## Most Active Cases per 1M

Gabon	1,317
South Africa	1,199
Eq. Guinea	1,036
Guinea-Bissau	667
Central African R..	578
Mauritania	562
Egypt	449
Eswatini	348
Cote d'Ivoire	206
South Sudan	152

\* Excludes regions with population < 1M





\*\* Per 1M = Per 1 Million Population unless otherwise noted

**Johns Hopkins Coronavirus Resource Center:**

<https://coronavirus.jhu.edu/map.html>

**Worldometer Coronavirus Reporting:**

<https://www.worldometers.info/coronavirus/>

**Public Health England:**

<https://www.gov.uk/government/publications/covid-19-track-coronavirus-cases>

**US Department of Homeland Security, Homeland Infrastructure Foundation-Level Data:**

<https://hifld-geoplatform.opendata.arcgis.com/datasets/hospitals>

**City of New York, NYC Health:**

<https://www1.nyc.gov/site/doh/covid/covid-19-data.page>

**Chicago Coronavirus Latest Data:**

<https://www.chicago.gov/city/en/sites/covid-19/home/latest-data.html>

**National Health Commission of the PRC:**

<http://www.nhc.gov.cn/xcs/yqtb/202003/bf66696029ba420098164607240074f8.shtml>

**Korean Centers for Disease Control and Prevention:**

[http://www.cdc.go.kr/cdc\\_eng/](http://www.cdc.go.kr/cdc_eng/)

**CDC, Severe Outcomes Among Patients with Coronavirus Disease 2019 (COVID-19):**

<https://www.cdc.gov/mmwr/volumes/69/wr/mm6912e2.htm>

**Italian Department of Civil Protection, COVID Monitoring:**

<http://opendatadpc.maps.arcgis.com/apps/opsdashboard/index.html#/b0c68bce2cce478eaac82fe38d4138b1>

**The COVID Tracking Project:**

<https://covidtracking.com/data/>

**UK Office for National Statistics**

<https://www.ons.gov.uk/peoplepopulationandcommunity/birthsdeathsandmarriages/deaths/bulletins/deathsregisteredweeklyinenglandandwalesprovisional/weekending24april2020>

**WHO Europe, Surveillance Report:**

<http://www.euro.who.int/en/health-topics/health-emergencies/coronavirus-covid-19/weekly-surveillance-report>

**WHO Europe, Principles for Transition:**

<http://www.euro.who.int/en/media-centre/sections/statements/2020/statement-transition-to-a-new-normal-during-the-covid-19-pandemic-must-be-guided-by-public-health-principles>

**COVID-19 Information for Switzerland:**

<https://www.corona-data.ch/>

**CIA World Factbook:**

<https://www.cia.gov/library/publications/resources/the-world-factbook/>

**Italian Ministry of Health:**

<http://www.salute.gov.it/portale/nuovocoronavirus/dettaglioContenutiNuovoCoronavirus.jsp?lingua=italiano&id=5351&area=nuovoCoronavirus&menu=vuoto>

**New South Wales Government:**

<https://www.health.nsw.gov.au/Infectious/diseases/Pages/covid-19-latest.aspx>

**Provincial Health Services Authority of Canada. BC Center for Disease Control:**

<http://www.bccdc.ca/about/news-stories/stories/2020/information-on-novel-coronavirus>

**Coronavirus Cases in Japan by Prefecture, Nippon Communications Foundation:**

<https://www.nippon.com/en/japan-data/h00657/coronavirus-cases-in-japan-by-prefecture.html>

**Secretary of Health, Mexico:**

<https://www.gob.mx/salud/en>

**OECD Economic Outlooks, Statistics:**

[https://www.oecd-ilibrary.org/economics/data/oecd-economic-outlook-statistics-and-projections\\_eo-data-en](https://www.oecd-ilibrary.org/economics/data/oecd-economic-outlook-statistics-and-projections_eo-data-en)

**Public Health Authority of Sweden:**

<https://www.folkhalsomyndigheten.se/smittskydd-beredskap/utbrott/aktuella-utbrott/covid-19/bekraftade-fall-i-sverige>

**National Public Health Agency of France:**

<https://www.santepubliquefrance.fr/regions/ile-de-france/documents/bulletin-regional/2020/covid-19-point-epidemiologique-en-ile-de-france-du-23-avril-2020>

**National Public Health Agency of France:**

<https://www.santepubliquefrance.fr/regions/ile-de-france/documents/bulletin-regional/2020/covid-19-point-epidemiologique-en-ile-de-france-du-23-avril-2020>

**Feature Sources:**

**India feature:**

<https://www.mohfw.gov.in/>

**India population:**

<http://statisticstimes.com/demographics/population-of-indian-states.php>

**COVID Timeline in India:**

<https://www.mohfw.gov.in/>