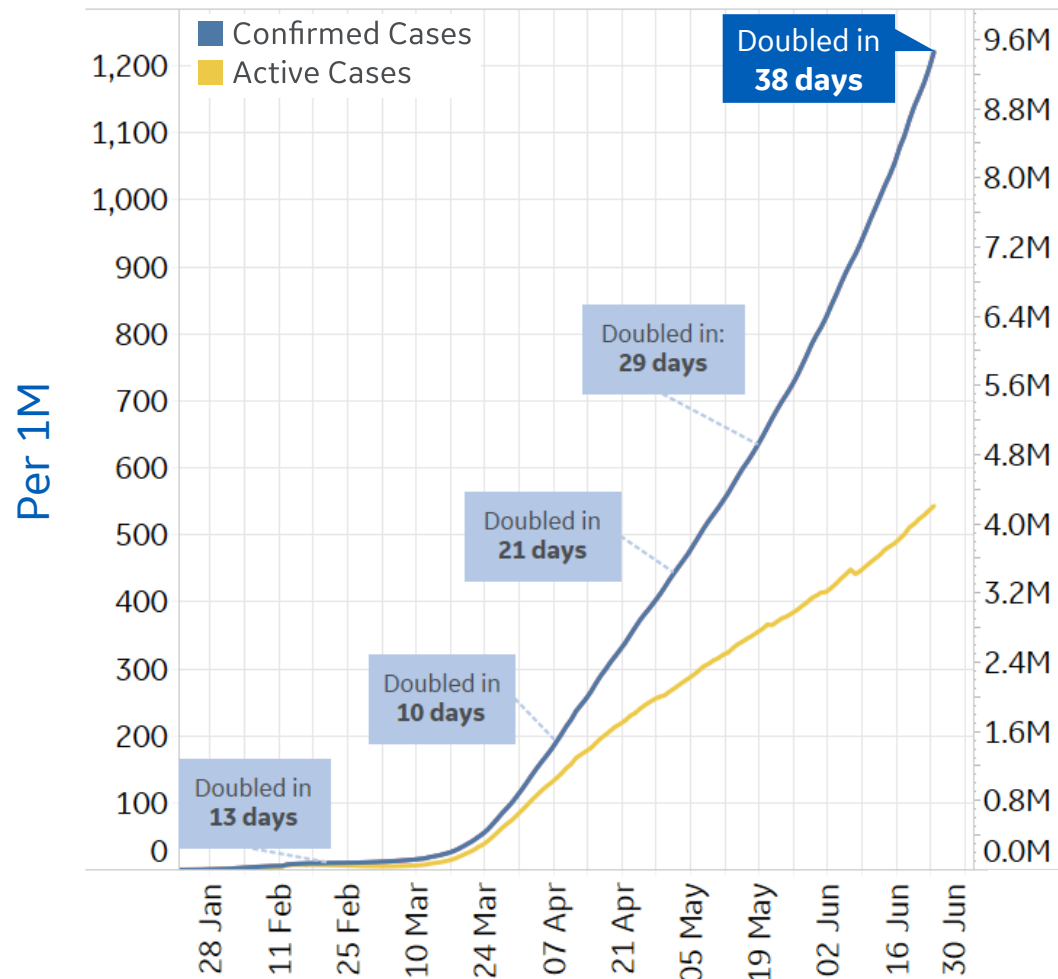




Global Confirmed & Active Cases

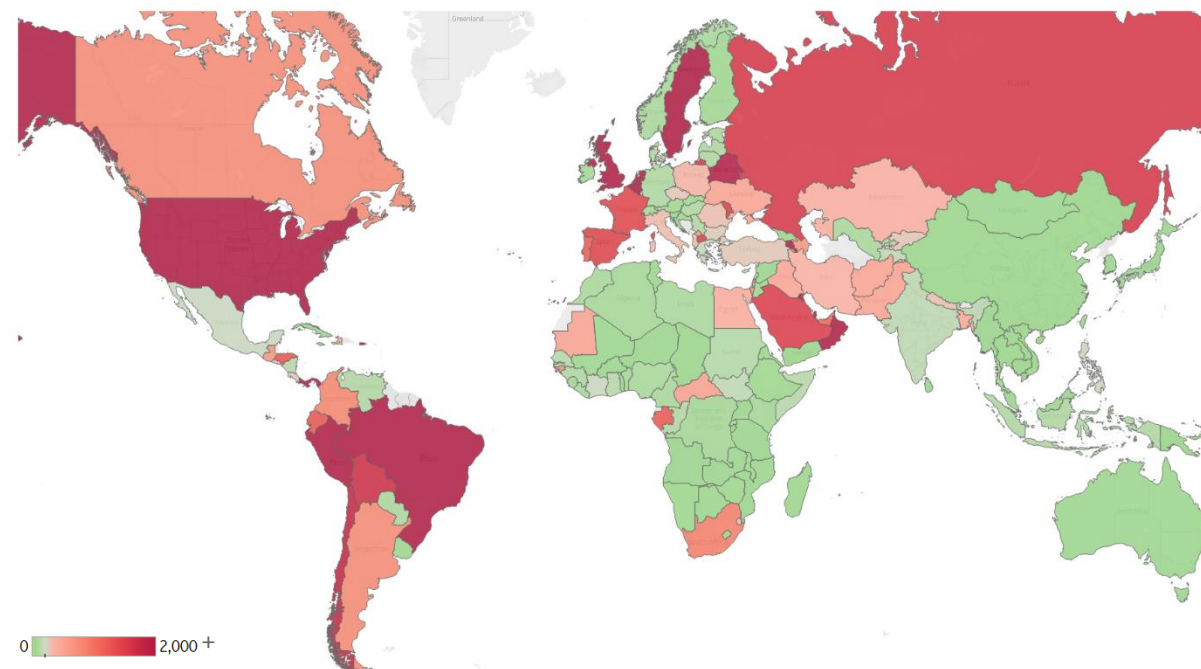


Trend since 22 Jan



Today per 1M

Active cases = Confirmed - Recovered - Deaths



Per 1M:	Today	Change
Active Today	543	+1%
Active	7 new	+1%
Confirmed	25 new	+2%
Deaths	1 new	+1%
Recovered	17 new	+3%



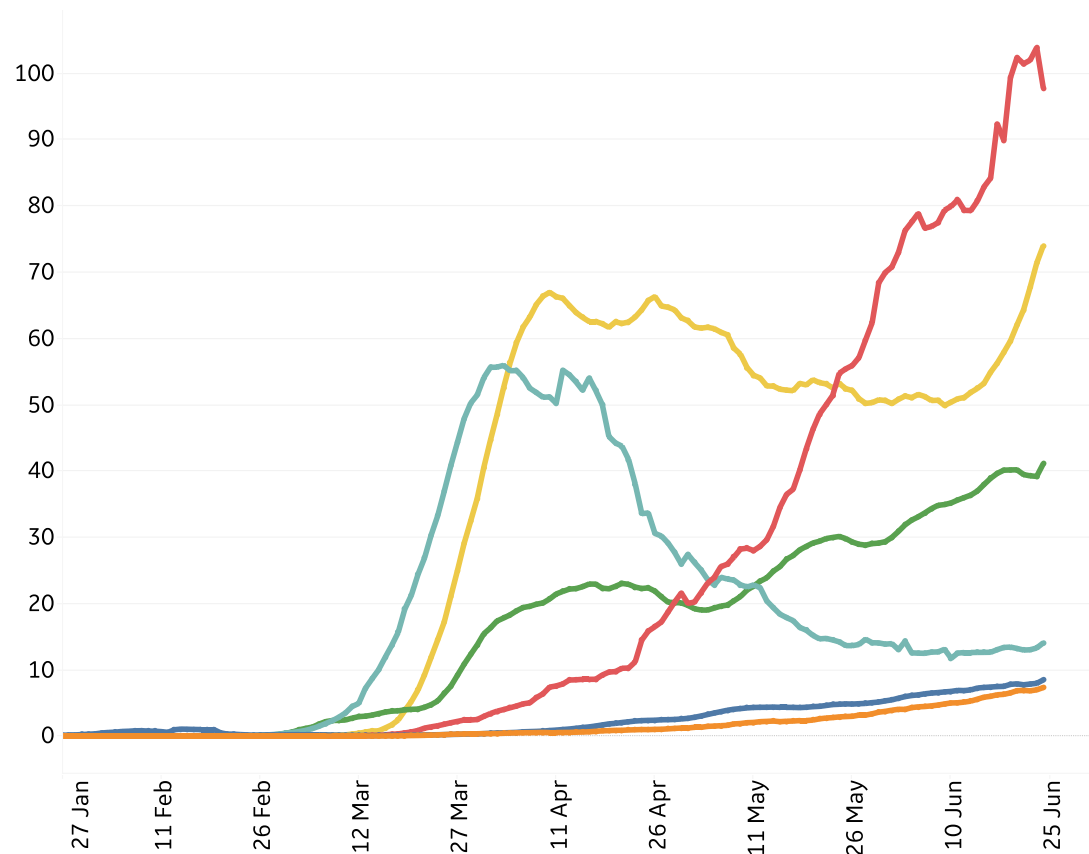
New Confirmed Cases & New Deaths



Key **North America** **Europe** **Middle East** **Central/South America** **Asia** **Africa**

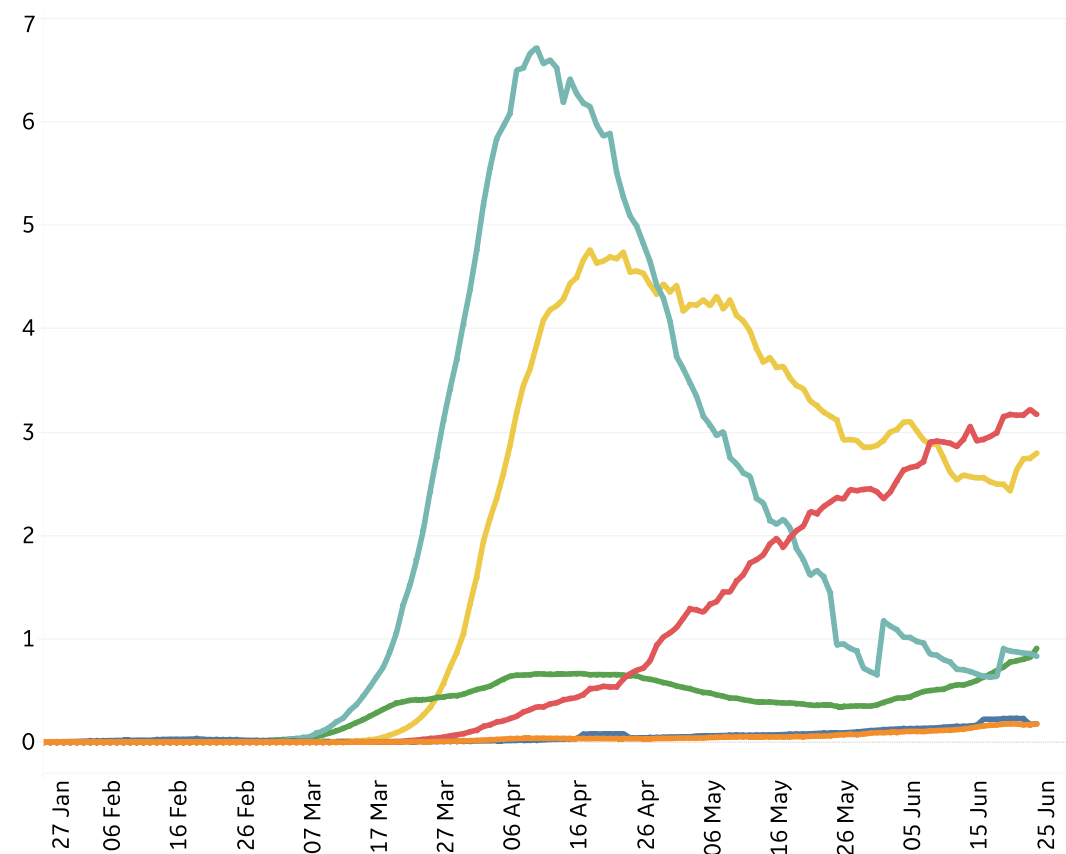
New Confirmed Cases / 1M

7-day rolling average



New Deaths / 1M

7-day rolling average





Top 50 Countries: Per 1M



1 - 25

	Active Today	Today			Total since 22 Jan		
		Confirmed	Deaths	Recovered	Total Confirmed	Total Deaths	Total Recovered
Qatar	6,106	416	2	549	31,509	36	25,367
Sweden	5,655	147	5	0	6,171	516	0
US	4,844	104	2	26	7,194	369	1,982
UK	3,886	10	2	0	4,542	636	20
Armenia	3,630	500	8	402	7,589	134	3,825
Bahrain	3,246	299	1	310	13,852	41	10,565
Oman	3,180	491	1	243	6,835	28	3,627
Peru	3,170	118	6	96	8,028	260	4,598
Belgium	2,978	17	1	0	5,264	839	1,447
Panama	2,941	166	3	23	6,496	127	3,429
Netherlands	2,551	5	0	0	2,919	357	11
Brazil	2,232	201	6	153	5,592	253	3,107
Kuwait	2,045	198	1	119	9,806	79	7,683
Belarus	1,965	95	1	292	6,390	39	4,386
Chile	1,810	191	12	237	13,309	247	11,252
Bolivia	1,698	94	3	42	2,355	75	582
Russia	1,576	98	2	129	4,202	59	2,567
Saudi Arabia	1,525	90	1	84	4,805	40	3,240
North Macedo..	1,486	64	4	21	2,614	124	1,004
Moldova	1,482	90	3	96	3,738	124	2,132
Spain	1,463	7	0	0	5,285	606	3,216
France	1,423	1	0	4	3,032	456	1,153
Honduras	1,273	63	1	8	1,471	42	156
Ecuador	1,268	0	0	0	2,927	242	1,416
Gabon	1,231	48	0	31	2,227	18	978

26 - 50

	Active Today	Today			Total since 22 Jan		
		Confirmed	Deaths	Recovered	Total Confirmed	Total Deaths	Total Recovered
Portugal	1,224	36	0	25	3,933	151	2,558
UAE	1,121	89	0	147	4,708	31	3,555
Dom. Rep.	1,100	64	1	41	2,639	64	1,475
Singapore	1,096	52	0	52	7,305	4	6,205
South Africa	889	96	2	31	1,885	37	959
EU	818	13	0	13	2,810	297	1,694
Colombia	800	0	0	0	1,450	50	600
Eq. Guinea	796	0	0	0	1,186	23	367
Argentina	773	59	1	6	1,103	25	306
Canada	769	8	1	11	2,758	226	1,763
Guinea-Bissau	684	0	0	0	791	10	97
Israel	678	72	0	11	2,558	36	1,844
Guatemala	630	16	1	2	827	34	164
Azerbaijan	628	58	1	26	1,411	17	766
Kosovo	588	0	0	0	1,175	20	567
Central Africa..	515	10	0	10	642	8	118
Mauritania	501	49	0	24	757	25	231
Afghanistan	496	18	1	23	775	17	261
Ukraine	490	45	1	19	934	25	420
Pakistan	488	18	1	16	874	18	368
Iraq	461	55	2	26	912	33	418
Bangladesh	446	45	0	24	769	10	313
Haiti	423	9	0	7	476	8	45
Egypt	402	14	1	4	582	24	156
Total World	543	25	1	17	1,220	62	615

Several countries are revising and updating case counts

Deaths in **India** increased 84% over the last 14 days

Top 50 countries selected by Active Cases / 1M
Excluded countries with population < 1M



Top 50 Countries: Raw Volume



1 - 25

	Active Cases	Today			Total since 22 Jan		
		Confirmed	Deaths	Recovered	Total Confirmed	Total Deaths	Total Recovered
US	1,603,229	34,347	751	8,613	2,381,369	121,979	656,161
Brazil	474,332	42,725	1,185	32,506	1,188,631	53,830	660,469
EU	364,308	5,828	155	5,802	1,251,104	132,445	754,351
UK	263,827	655	154	15	308,337	43,165	1,345
Russia	229,997	14,270	245	18,710	613,148	8,594	374,557
Pakistan	107,760	4,044	148	3,553	192,970	3,903	81,307
Peru	104,514	3,879	182	3,152	264,689	8,586	151,589
France	92,900	81	11	256	197,885	29,734	75,251
Bangladesh	73,490	7,408	76	3,860	126,606	1,621	51,495
Spain	68,383	334	2	0	247,086	28,327	150,376
Sweden	57,115	1,487	48	0	62,324	5,209	0
Saudi Arabia	53,083	3,123	41	2,912	167,267	1,387	112,797
South Africa	52,717	5,688	103	1,829	111,796	2,205	56,874
Netherlands	43,710	82	2	0	50,012	6,116	186
Colombia	40,719	0	0	0	73,760	2,524	30,517
Egypt	41,176	1,420	85	400	59,561	2,450	15,935
Chile	34,592	3,649	226	4,523	254,416	4,731	215,093
Belgium	34,510	197	13	0	61,007	9,726	16,771
Argentina	34,919	2,648	38	240	49,851	1,116	13,816
Canada	29,010	320	32	398	104,087	8,544	66,533
Ecuador	22,378	0	0	0	51,643	4,274	24,991
Ukraine	21,411	1,953	33	827	40,854	1,078	18,365
Bolivia	19,816	1,098	30	495	27,487	876	6,795
Belarus	18,567	895	10	2,760	60,382	367	41,448
Afghanistan	19,326	694	57	914	30,175	675	10,174

26 - 50

	Active Cases	Today			Total since 22 Jan		
		Confirmed	Deaths	Recovered	Total Confirmed	Total Deaths	Total Recovered
Iraq	18,558	2,200	79	1,061	36,702	1,330	16,814
Qatar	17,591	1,199	5	1,582	90,778	104	73,083
Oman	16,238	2,508	4	1,241	34,902	144	18,520
Panama	12,689	716	11	100	28,030	547	14,794
Honduras	12,608	628	12	85	14,571	417	1,546
Portugal	12,478	367	3	254	40,104	1,543	26,083
Dom. Rep.	11,934	695	16	455	28,631	691	16,006
Guatemala	11,288	279	19	33	14,819	601	2,930
UAE	11,090	880	3	1,462	46,563	308	35,165
Armenia	10,756	1,482	25	1,191	22,488	397	11,335
Kuwait	8,733	846	3	505	41,879	337	32,809
Singapore	6,411	304	0	304	42,736	26	36,299
Azerbaijan	6,363	590	7	265	14,305	174	7,768
Moldova	5,977	364	12	387	15,078	502	8,599
Israel	5,870	627	0	92	22,139	308	15,961
Bahrain	5,524	508	2	527	23,570	69	17,977
Haiti	4,825	105	3	76	5,429	92	512
North Macedo..	3,095	134	8	43	5,445	259	2,091
Gabon	2,740	107	0	70	4,956	39	2,177
Central Africa..	2,489	48	1	50	3,099	38	572
Mauritania	2,329	227	2	111	3,519	116	1,074
Guinea-Bissau	1,346	0	0	0	1,556	19	191
Eq. Guinea	1,117	0	0	0	1,664	32	515
Kosovo	1,085	0	0	0	2,169	37	1,047
Total World	4,205,889	190,207	5,623	134,186	9,453,673	483,207	4,764,577

Several countries are revising and updating case counts

Average New Cases in **Brazil** increased 27% over the last 7 days

Top 50 countries selected by Active Cases / 1M
Excluded countries with population < 1M

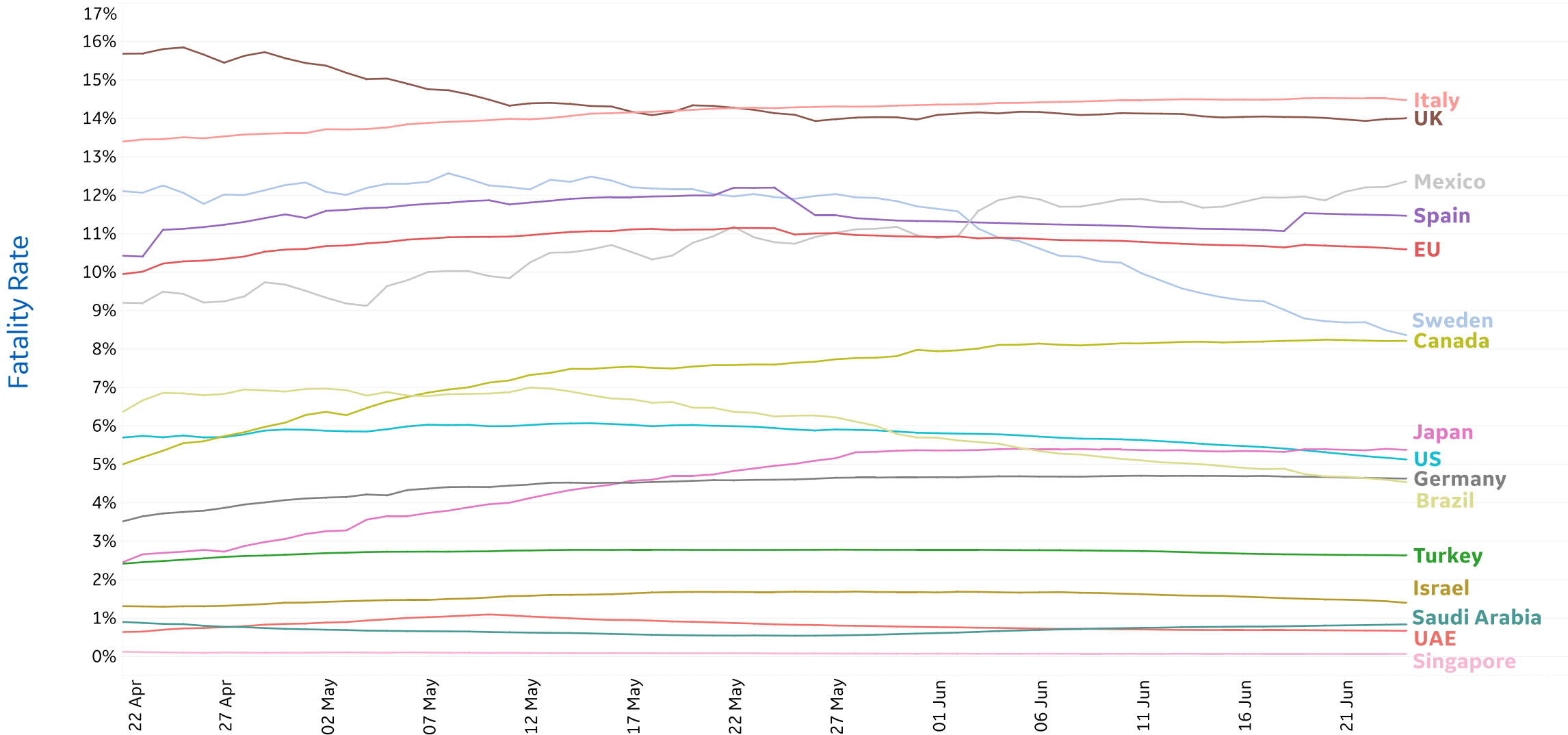


Fatality Rate in Select Countries



Deaths / Confirmed Cases

Since 22 Apr 2020



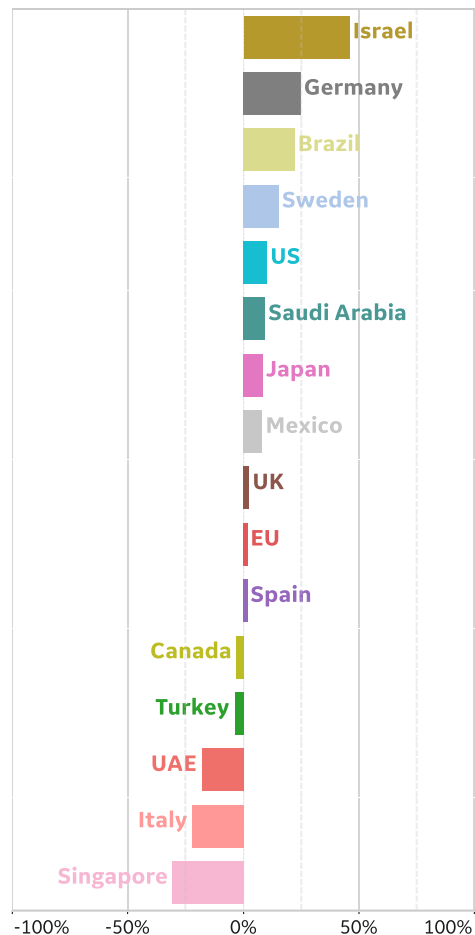


% Change in Case Volume in Select Countries

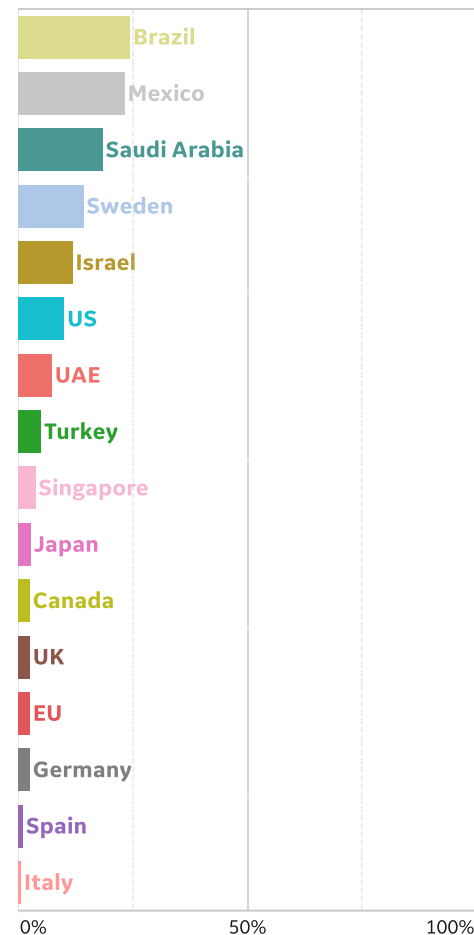


Over Previous 7 days

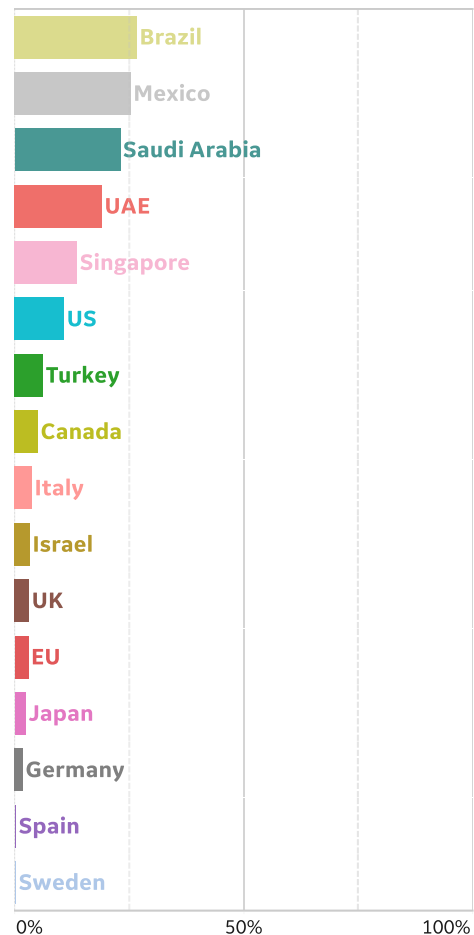
Active Cases



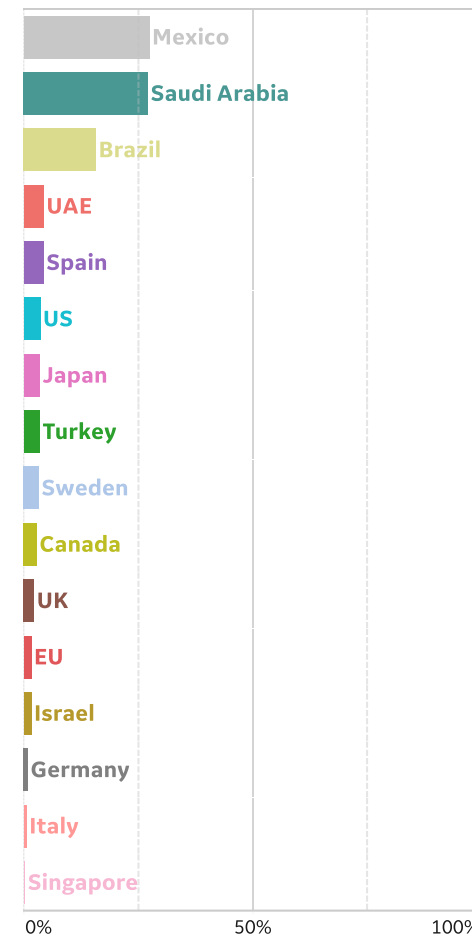
Confirmed Cases

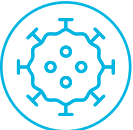


Reported Recoveries



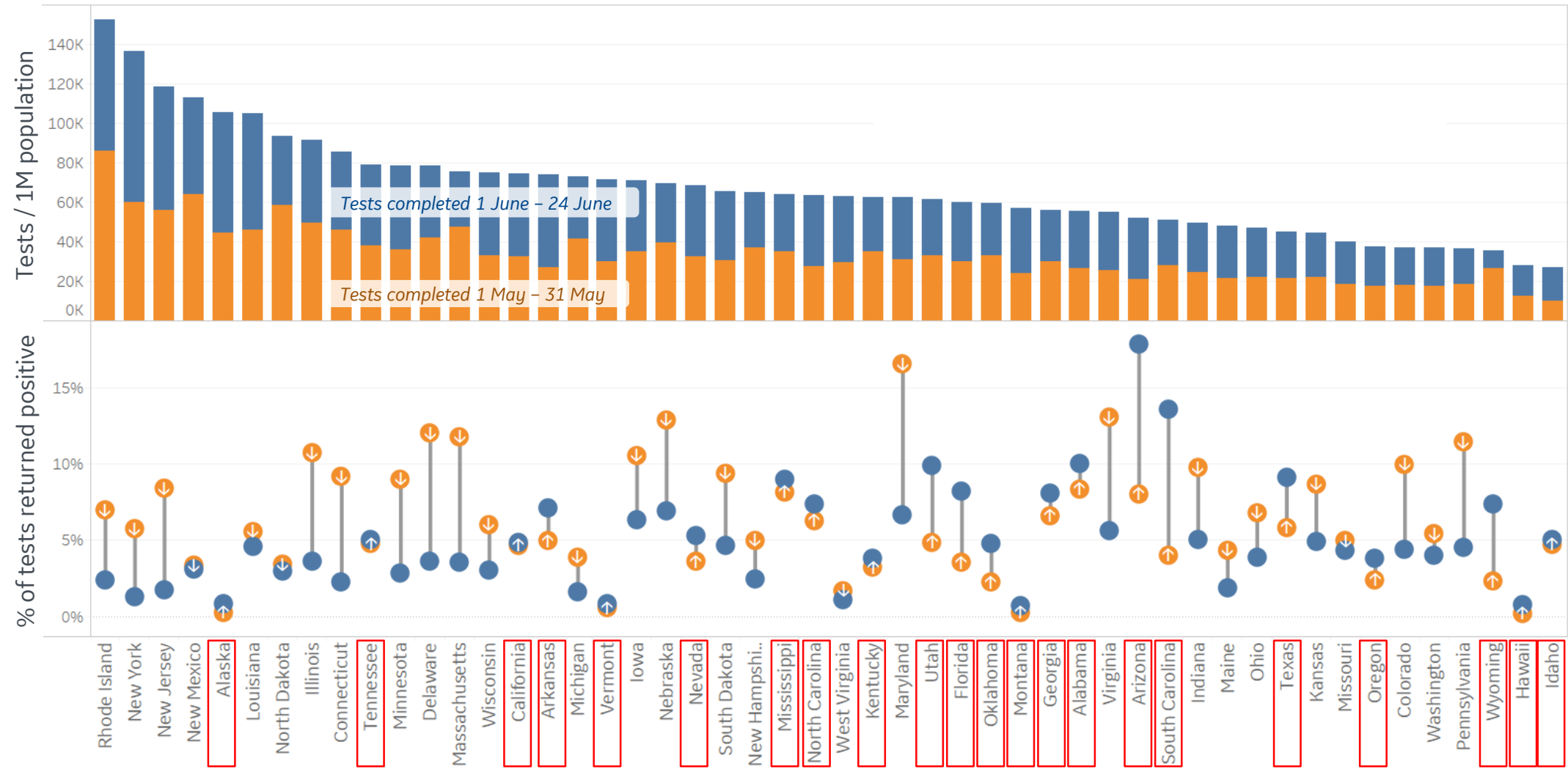
Reported Deaths





Feature: COVID Testing and % Positive Results in US

Viral Testing Volumes and Positive Rates: June vs. May



Nationwide:
11.5M Tests
Completed 1 June – 24 June

10.7M Tests
Completed in May

% of Tests Positive in June:
Ranges from 0.7% (Montana) to 17.9% (Arizona)

22 states are reporting higher rates of positive test results in June compared to May



Feature: June Wave Compared to NY March Wave

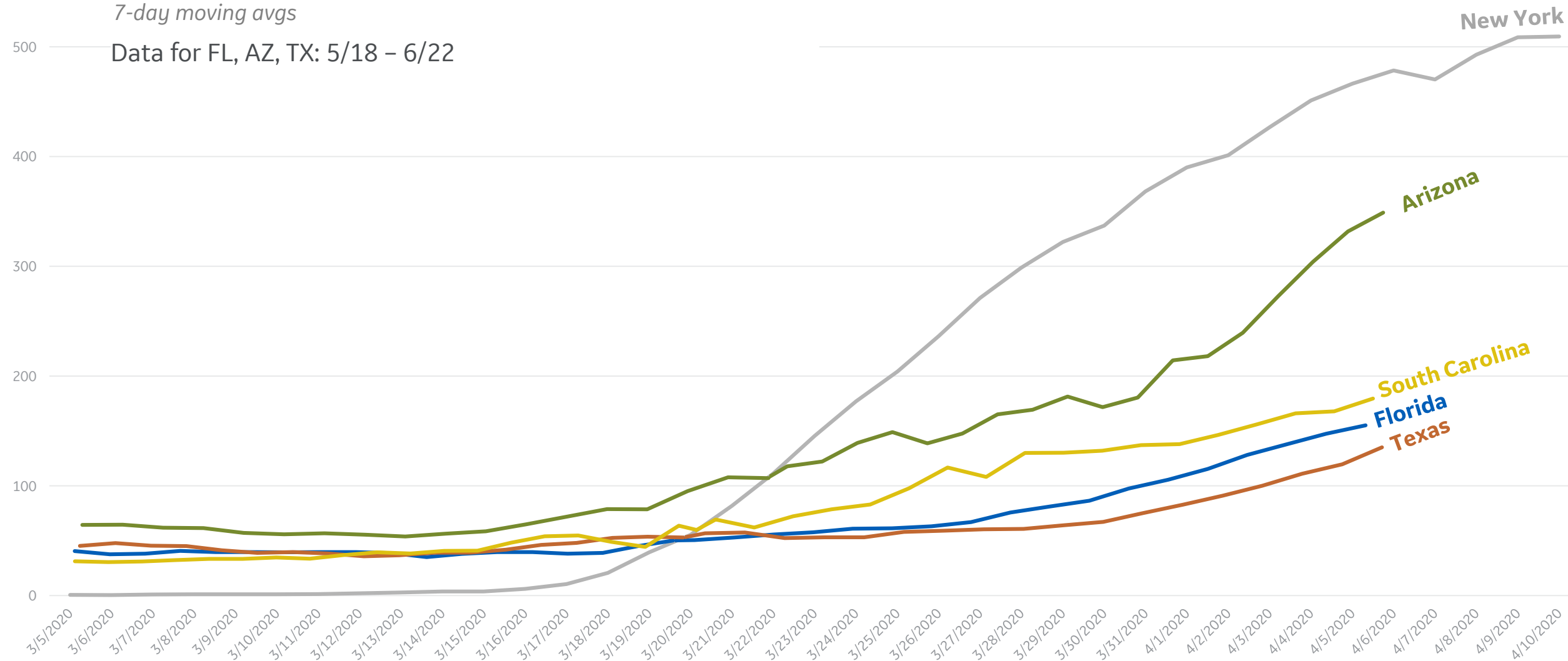


Daily New Confirmed Cases / 1M in New York in March

compared to **Select States in June**

7-day moving avgs

Data for FL, AZ, TX: 5/18 - 6/22

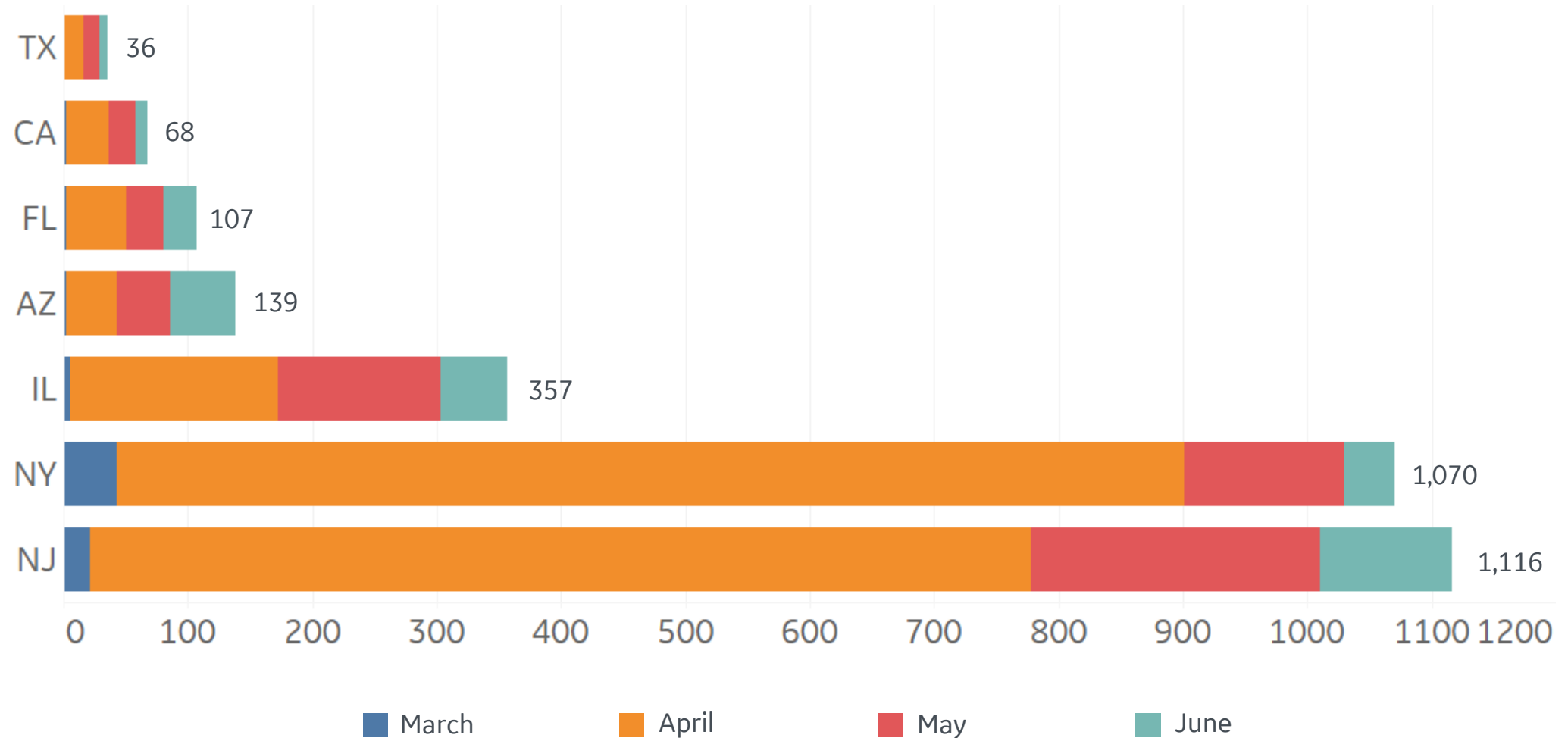


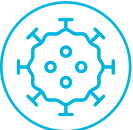


Feature: Cumulative Deaths, Select States



Cumulative Deaths / 1M to Date in Select States

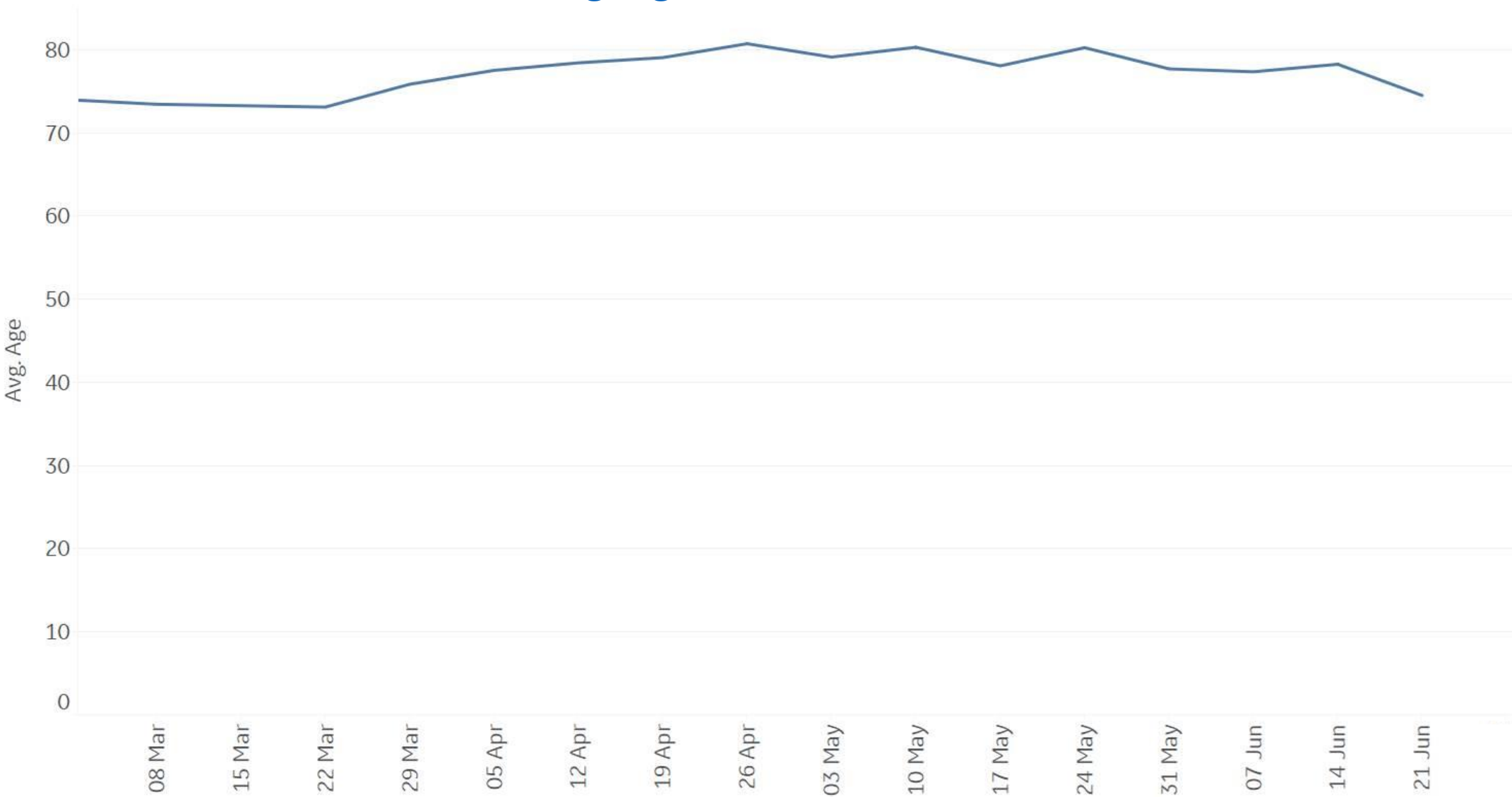




Feature: Deaths by Age Over Time in Florida



Average Age of Deaths Over Time





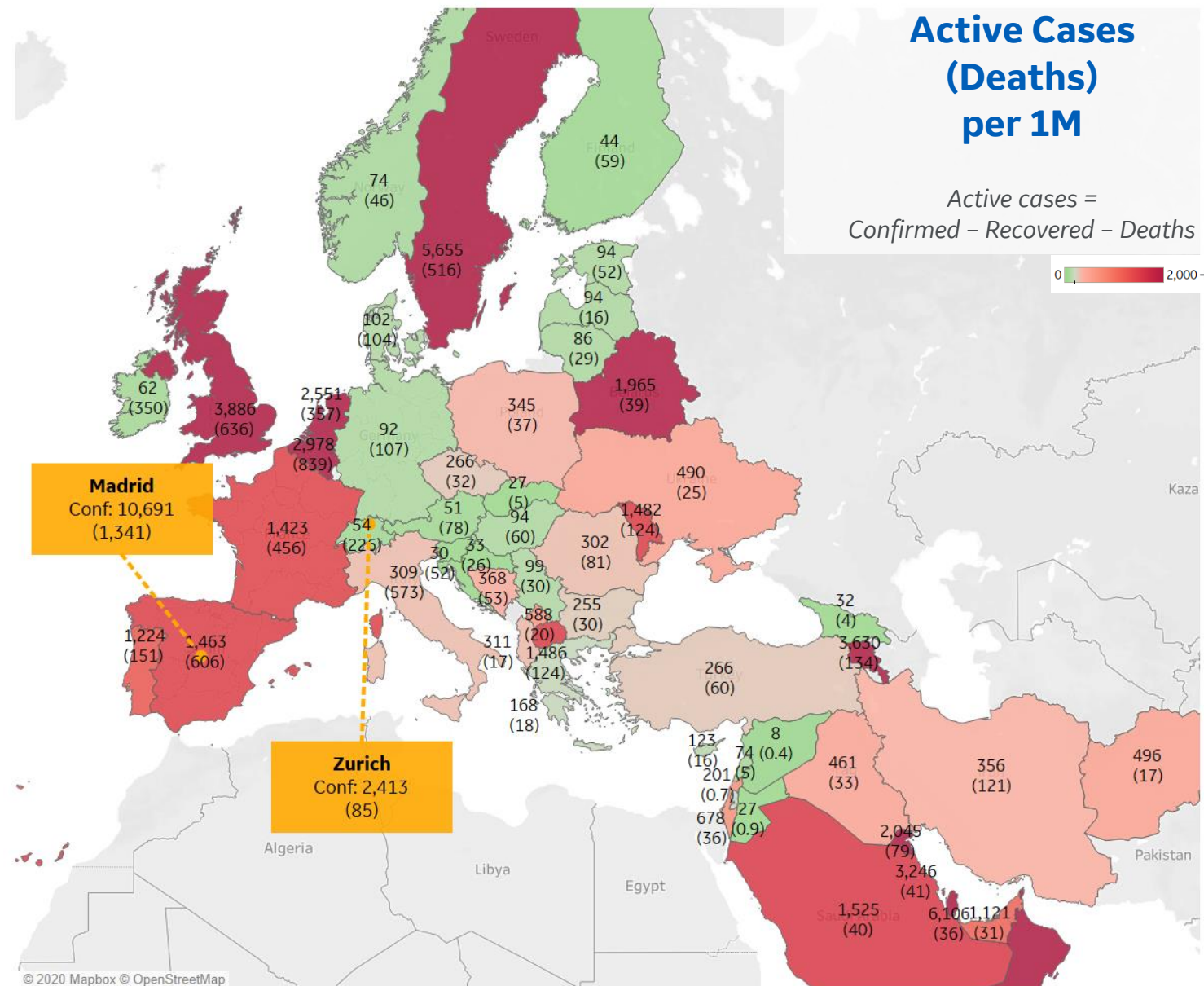
Per 1M in Region

	Today	Change
Active Cases	936	+0.2%
Confirmed	32 new	+1%
Deaths	1 new	+0.4%
Recovered	30 new	+2%

Most Active Cases per 1M

Qatar	6,106
Sweden	5,655
UK	3,886
Armenia	3,630
Bahrain	3,246
Oman	3,180
Belgium	2,978
Netherlands	2,551
Kuwait	2,045
Belarus	1,965

* Excludes regions with population < 1M





Per 1M in Region

	Today	Change
Active Cases	3,627	-0.1%
Confirmed	9 new	+0.2%
Deaths	2 new	+0.4%
Recovered	9 new	+3%

Most Active Cases per 1M

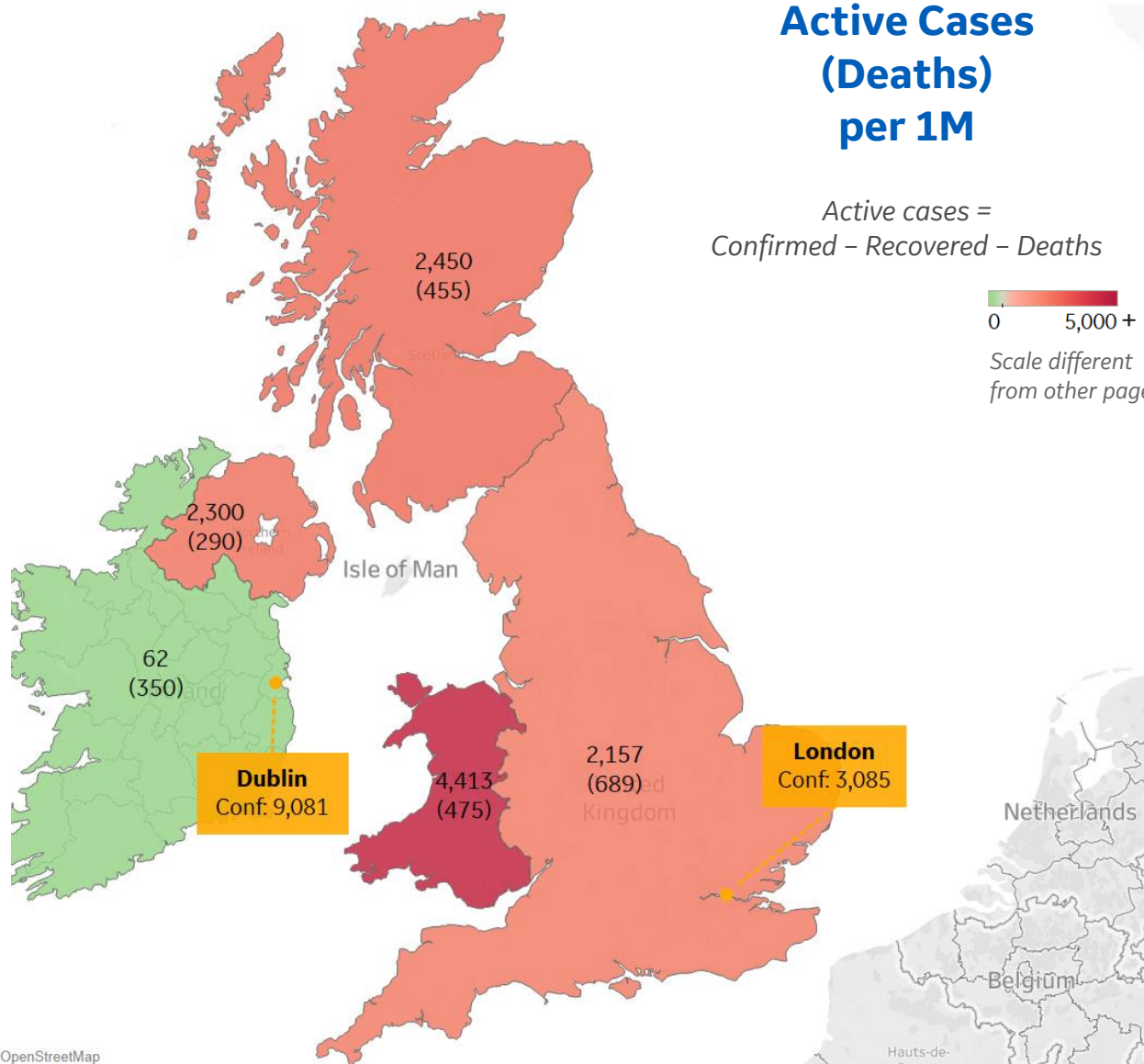
Wales	4,413
Scotland	2,450
Northern Ireland	2,300
England	2,157
Ireland	62

Active Cases (Deaths) per 1M

Active cases =
Confirmed - Recovered - Deaths

0 5,000+

Scale different
from other pages



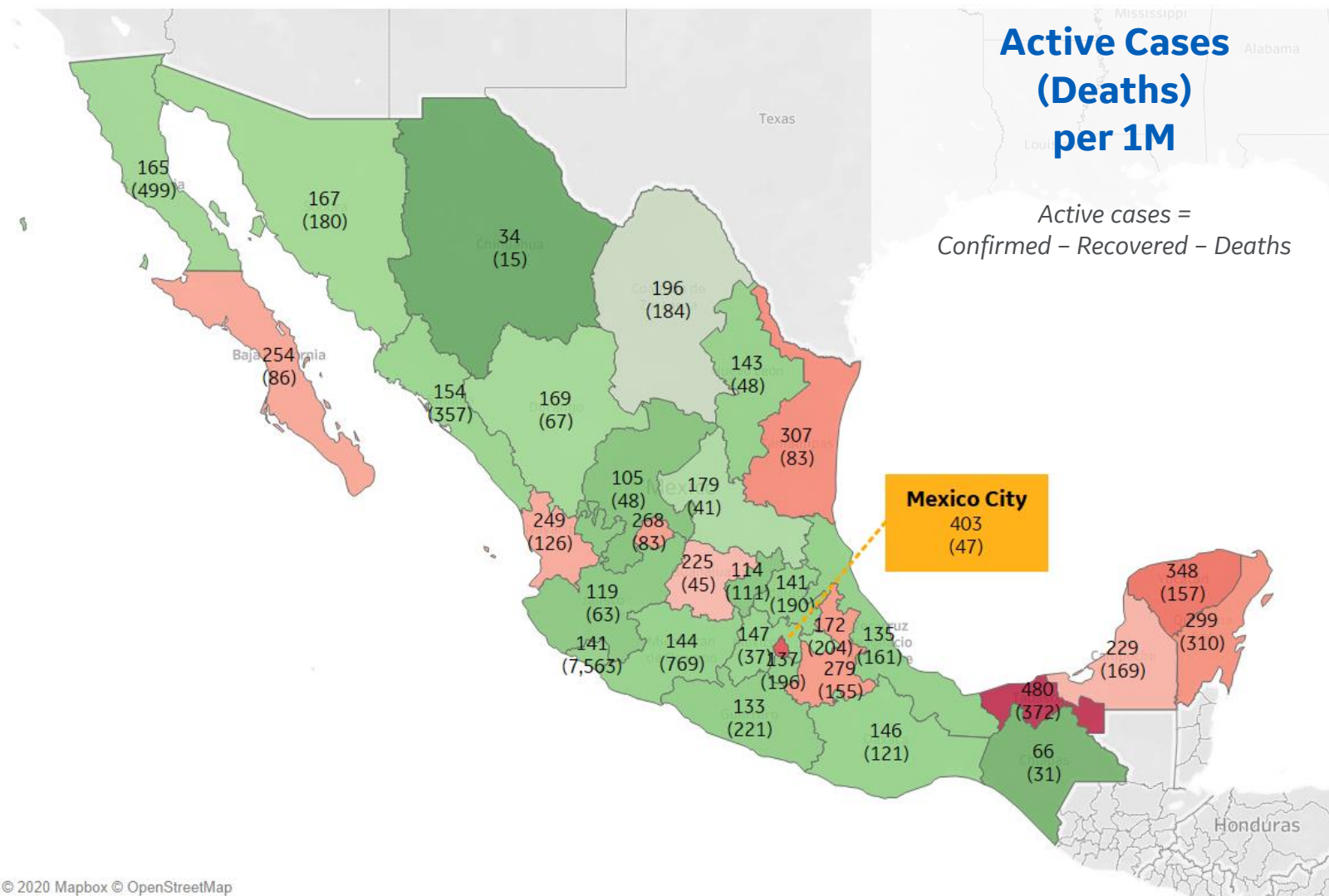


Per 1M in Region

	Today	Change
Active Cases	186	-1%
Confirmed	42 new	+3%
Deaths	7 new	+4%
Recovered	38 new	+3%

Most Active Cases per 1M

Tabasco	480
Distrito Federal	403
Yucatan	348
Tamaulipas	307
Quintana Roo	299
Puebla	279
Aguascalientes	268
Baja California Sur	254
Nayarit	249
Campeche	229



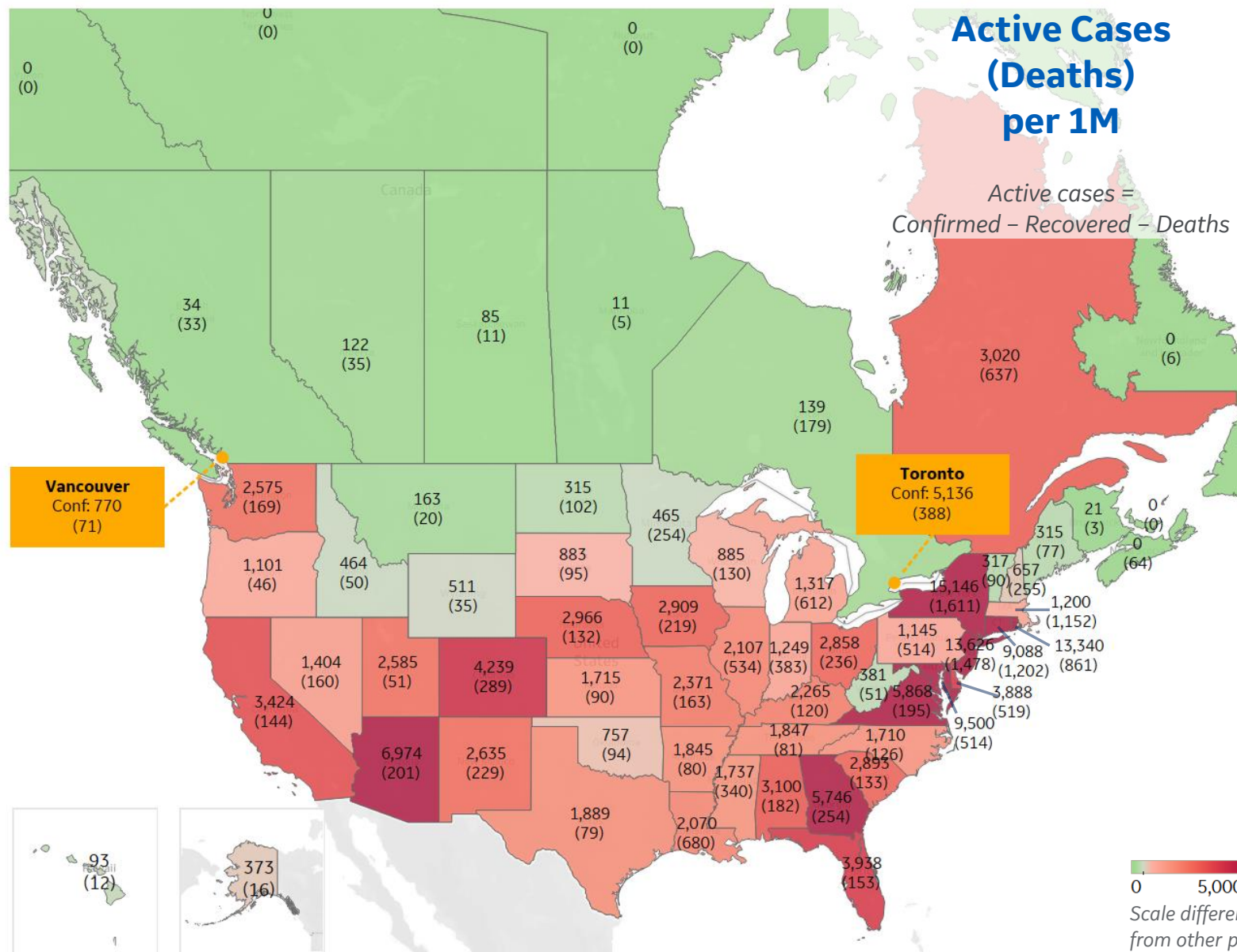


Per 1M in Region

	Today	Change
Active Cases	4,426	+2%
Confirmed	94 new	+1%
Deaths	2 new	+0.6%
Recovered	25 new	+1%

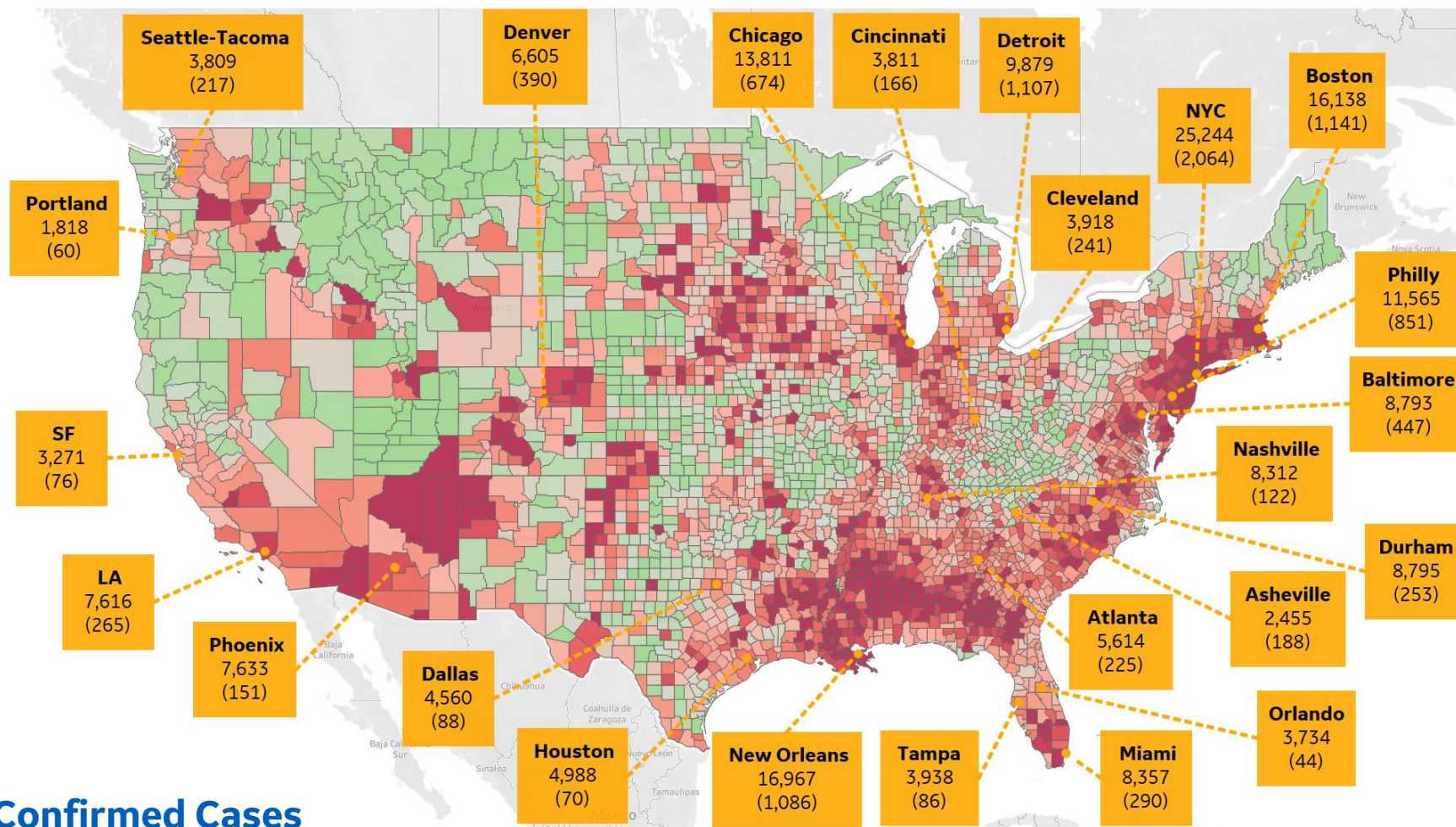
Most Active Cases per 1M

New York	15,146
New Jersey	13,626
Rhode Island	13,340
DC	11,909
Maryland	9,500
Connecticut	9,088
Arizona	6,974
Virginia	5,868
Georgia	5,746
Colorado	4,239



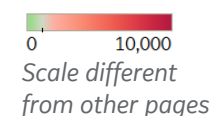


US by County & Metro, Total to Date



Confirmed Cases
(Deaths)
per 1M

Each box reports data for the Metropolitan Statistical Area of the major city listed



Top 10 Northeast Counties

Total Confirmed Cases / 1M

Rockland County, NY	41,332
Westchester County, NY	35,548
Passaic County, NJ	33,259
Nassau County, NY	30,463
Union County, NJ	29,339
Hudson County, NJ	28,602
Suffolk County, NY	27,634
Orange County, NY	27,554
New York City*	25,320
Suffolk County, MA	24,173

Top 10 Other US Counties

Total Confirmed Cases / 1M

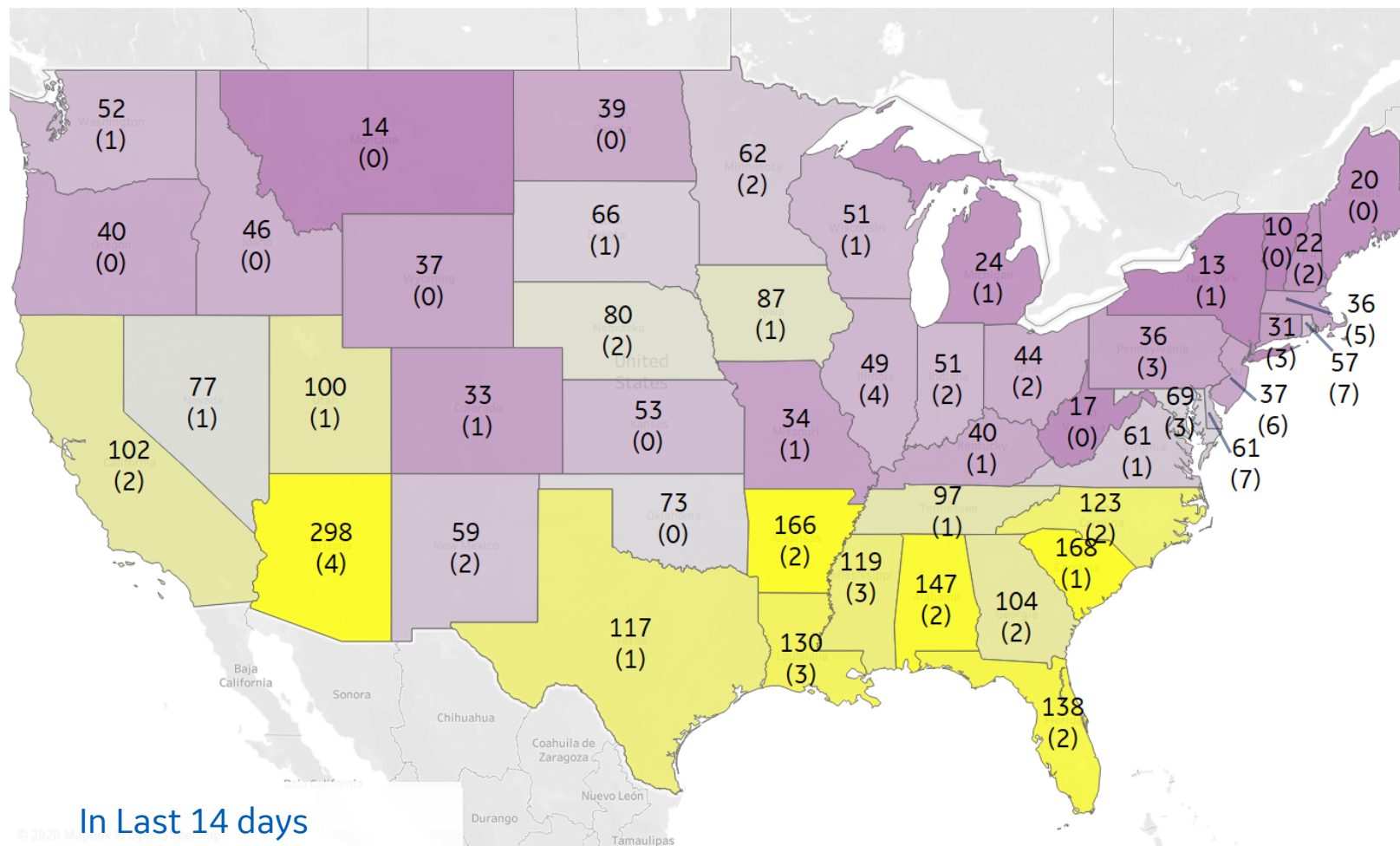
Yakima County, WA	23,011
Jefferson Parish, LA	19,693
Prince George's County, MD	19,343
Orleans Parish, LA	19,098
Cook County, IL	16,704
Prince William County, VA	14,251
District of Columbia, DC	14,000
Kane County, IL	13,589
Lake County, IL	13,196
Montgomery County, MD	13,151

Note: Includes counties ≥ 250K population

* New York City counties aggregated into one reporting area



US, New in Last 14 days



Top 10 by New Confirmed

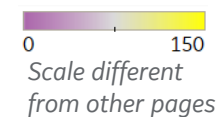
Avg New Confirmed Cases / 1M

Arizona	298
South Carolina	168
Arkansas	166
Alabama	147
Florida	138
Louisiana	130
North Carolina	123
Mississippi	119
Texas	117
Georgia	104

Top 10 by New Deaths

Avg New Deaths / 1M

Delaware	7
Rhode Island	7
New Jersey	6
Massachusetts	5
Arizona	4
District of Columbia	4
Illinois	4
Connecticut	3
Louisiana	3
Maryland	3





Central & South America



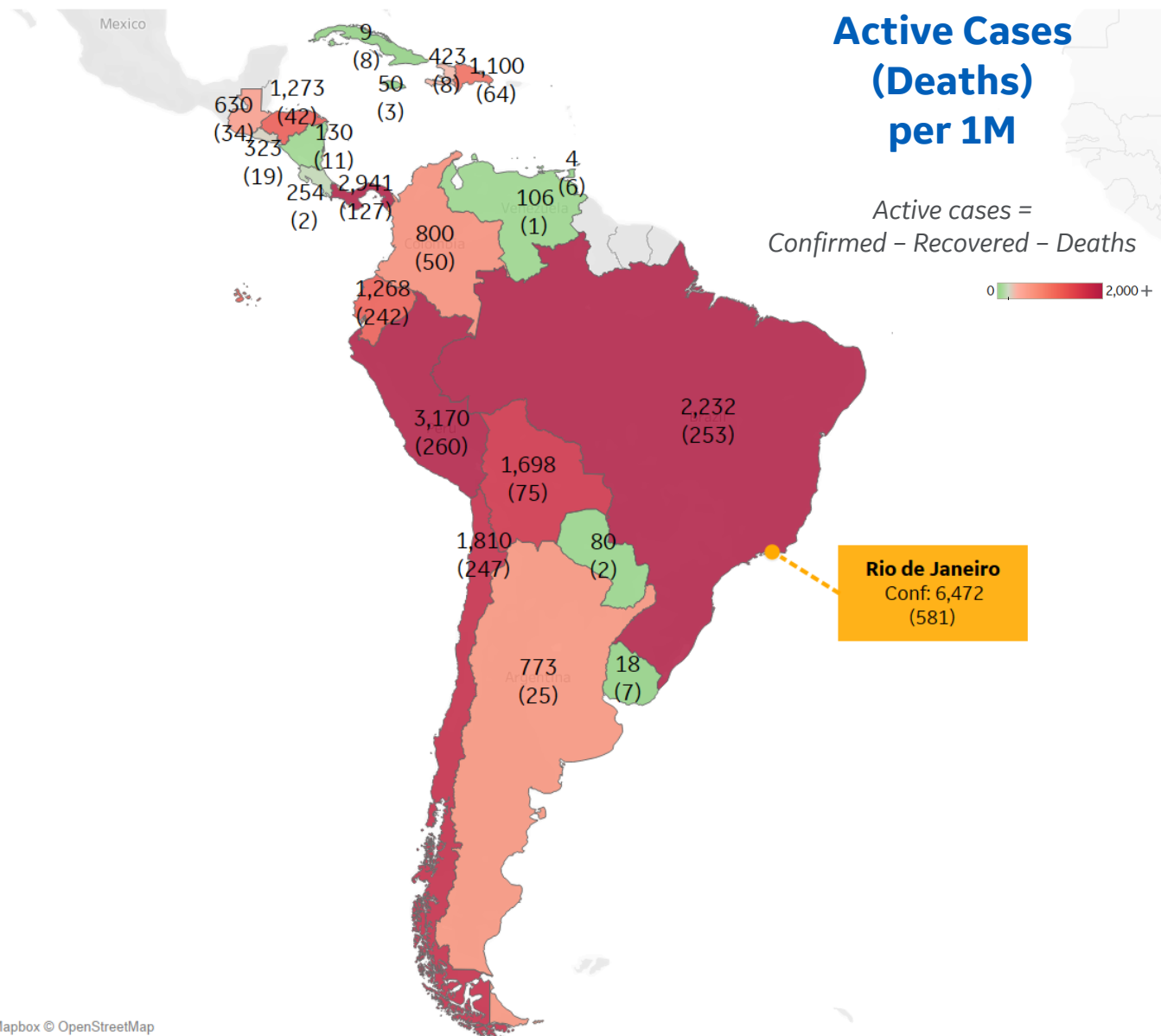
Per 1M in Region

	Today	Change
Active Cases	1,524	+2%
Confirmed	110 new	+3%
Deaths	3 new	+2%
Recovered	81 new	+4%

Most Active Cases per 1M

Peru	3,170
Panama	2,941
Brazil	2,232
Chile	1,810
Bolivia	1,698
Honduras	1,273
Ecuador	1,268
Dom. Rep.	1,100
Colombia	800
Argentina	773

* Excludes regions with population < 1M





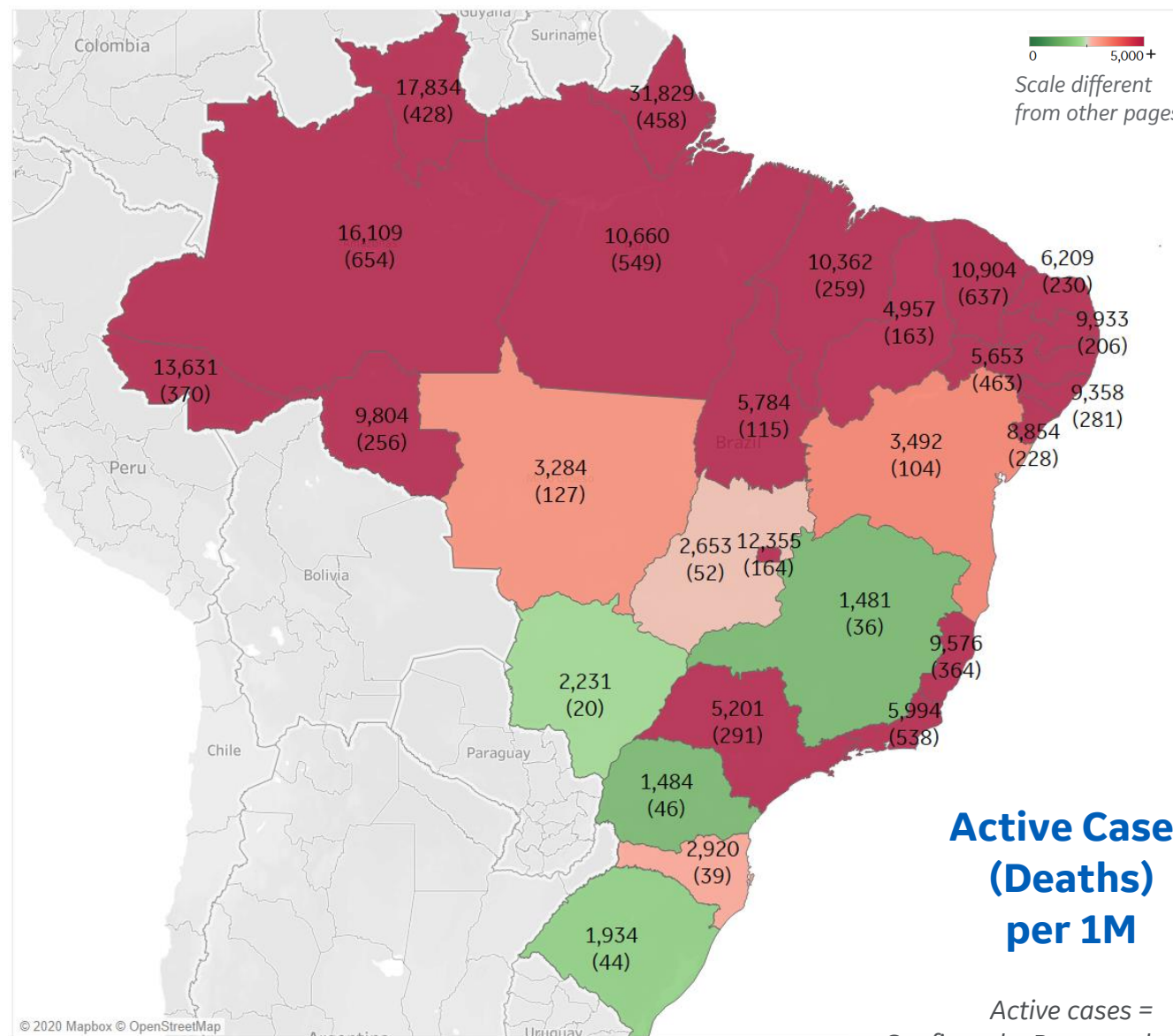
Per 1M in Region

	Today	Change
Active Cases	2,232	+2%
Confirmed	201 new	+4%
Deaths	6 new	+2%
Recovered	153 new	+5%

Most Active Cases per 1M

Amazonas	16,109
Distrito Federal	12,355
Ceará	10,904
Pará	10,660
Maranhão	10,362
Paraíba	9,933
Rondônia	9,804
Espírito Santo	9,576
Alagoas	9,358
Sergipe	8,854

* Excludes regions with population < 1M





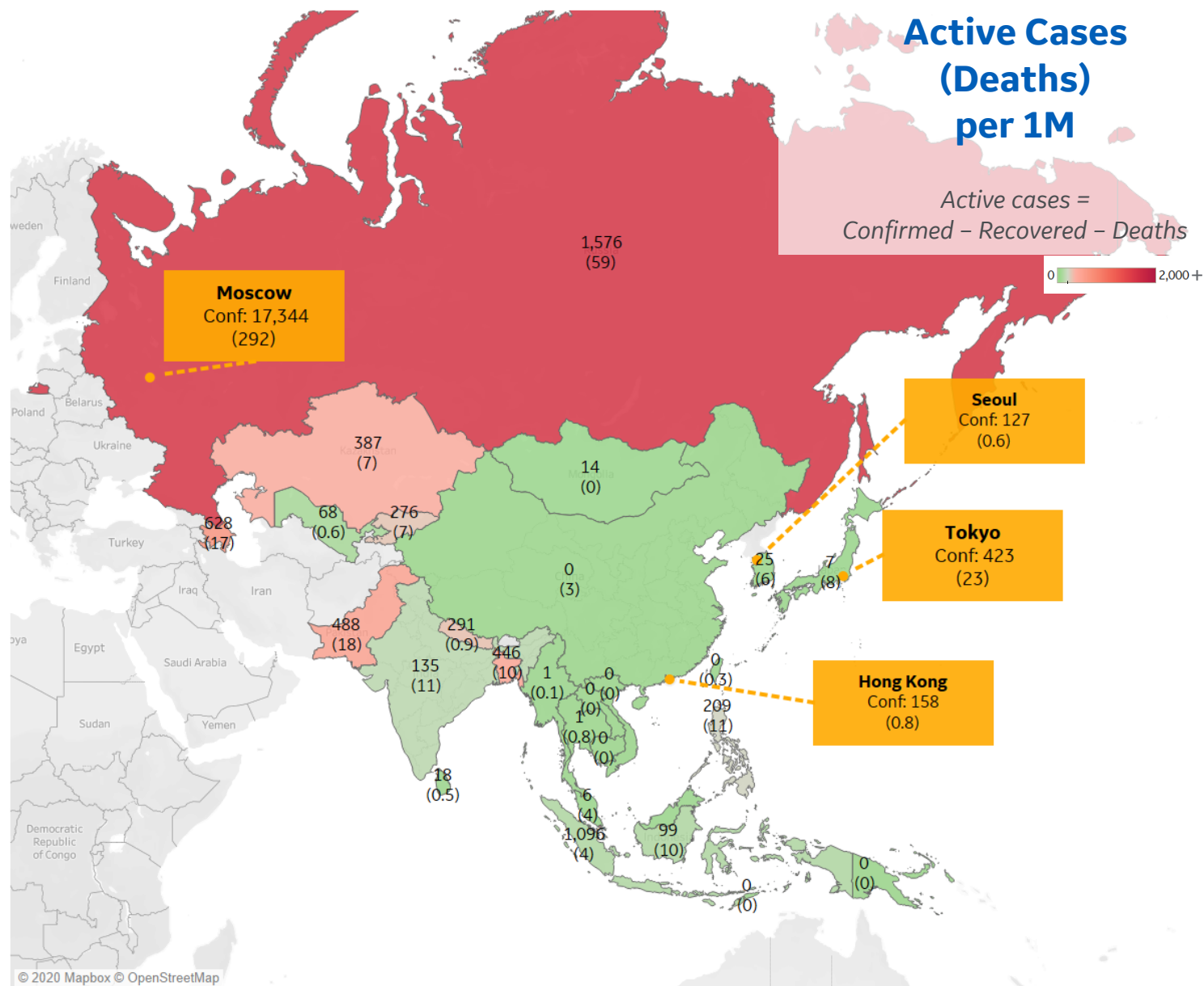
Per 1M in Region

	Today	Change
Active Cases	157	+1%
Confirmed	11 new	+3%
Deaths	0.2 new	+3%
Recovered	10 new	+5%

Most Active Cases per 1M

Russia	1,576
Singapore	1,096
Azerbaijan	628
Pakistan	488
Bangladesh	446
Kazakhstan	387
Nepal	291
Kyrgyzstan	276
Philippines	209
India	135

* Excludes regions with population < 1M





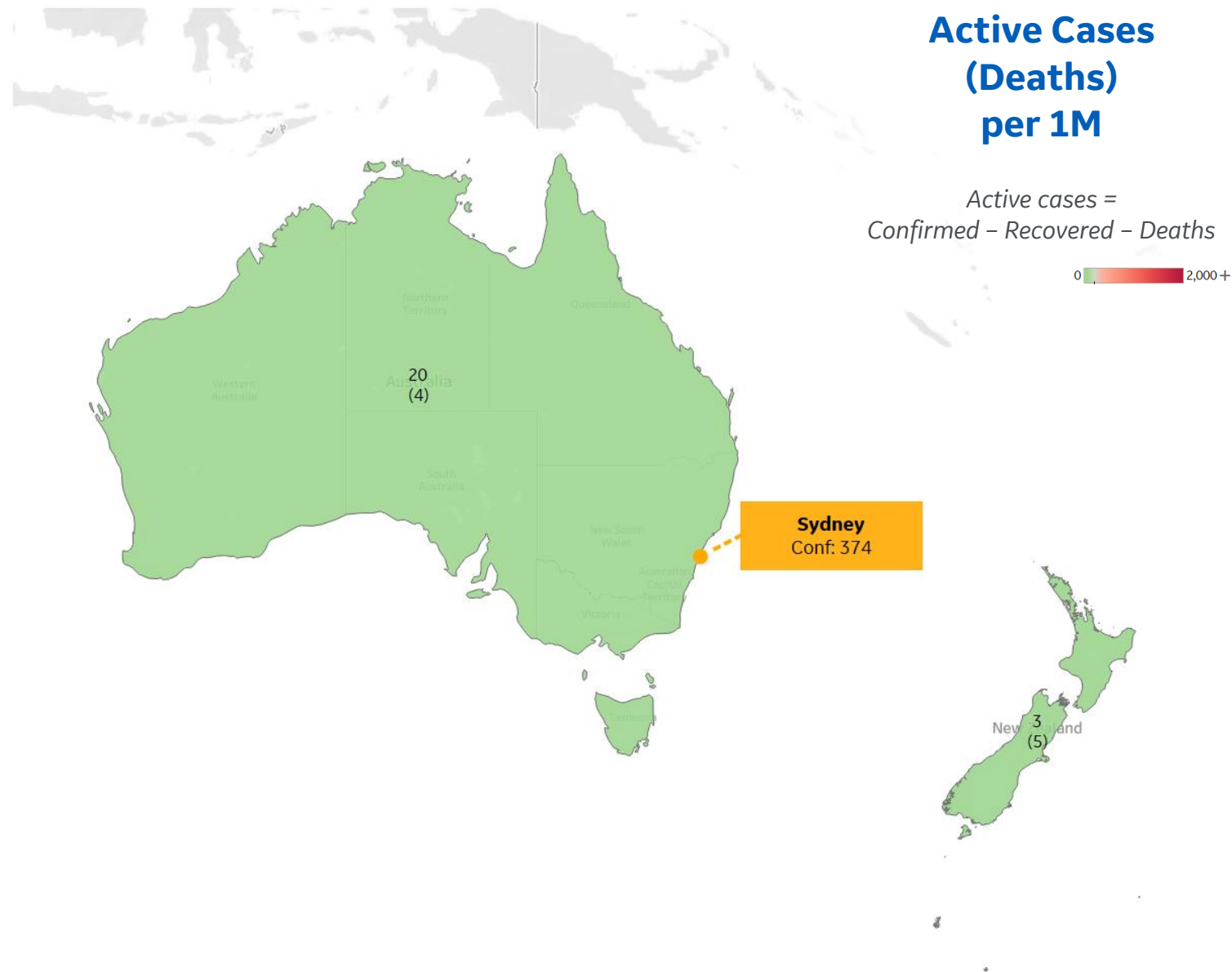
Per 1M in Region

	Today	Change
Active Cases	17	+4%
Confirmed	1 new	+0.4%
Deaths	0 new	+0%
Recovered	0 new	+0%

Most Active Cases per 1M

Australia	20
New Zealand	3

* Excludes regions with population < 1M





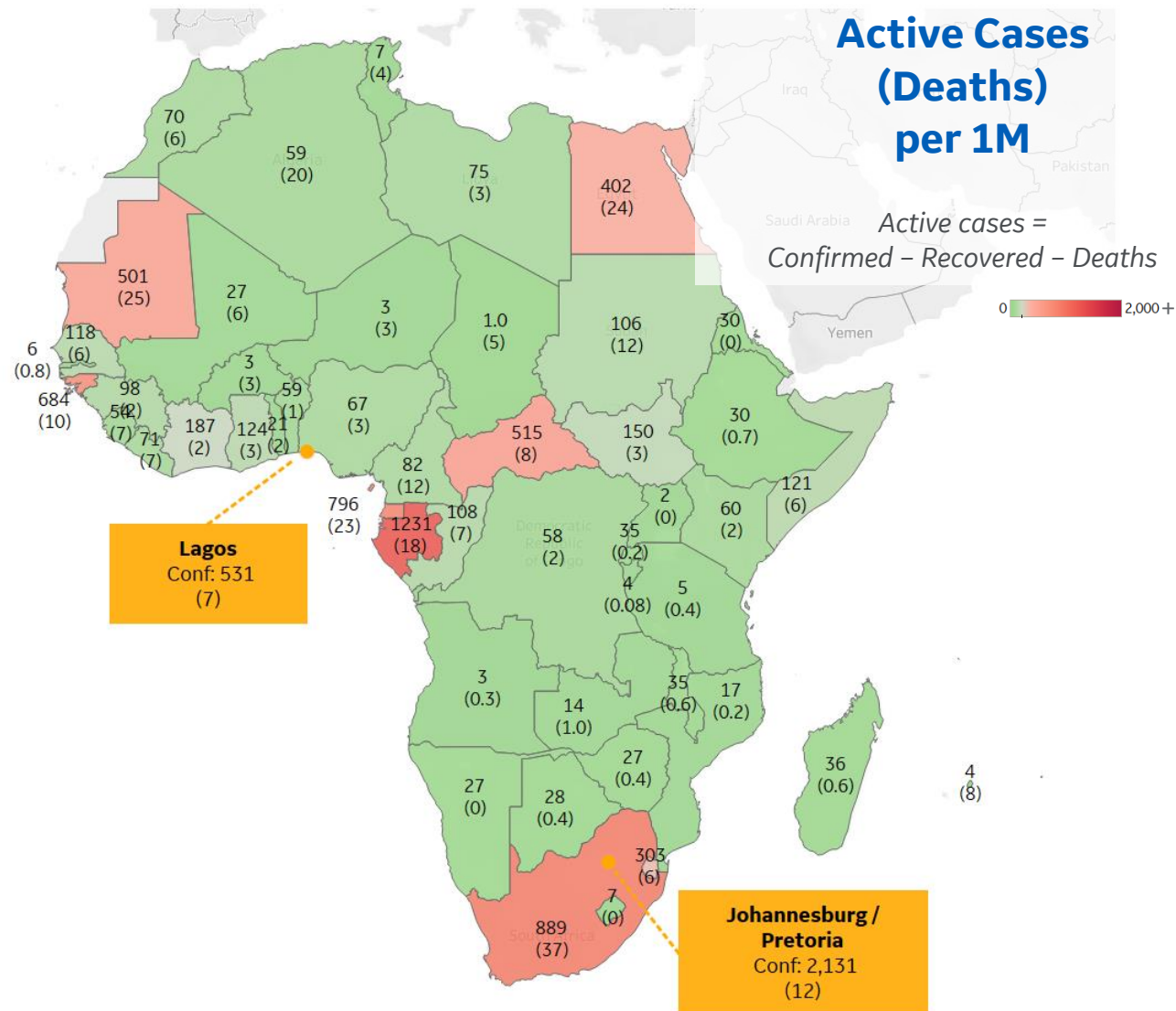
Per 1M in Region

	Today	Change
Active Cases	125	+3%
Confirmed	9 new	+4%
Deaths	0.2 new	+3%
Recovered	5 new	+4%

Most Active Cases per 1M

Gabon	1,231
South Africa	889
Eq. Guinea	796
Guinea-Bissau	684
Central African R..	515
Mauritania	501
Egypt	402
Eswatini	303
Cote d'Ivoire	187
South Sudan	150

* Excludes regions with population < 1M





** Per 1M = Per 1 Million Population unless otherwise noted

Johns Hopkins Coronavirus Resource Center:

<https://coronavirus.jhu.edu/map.html>

Worldometer Coronavirus Reporting:

<https://www.worldometers.info/coronavirus/>

Public Health England:

<https://www.gov.uk/government/publications/covid-19-track-coronavirus-cases>

US Department of Homeland Security, Homeland Infrastructure Foundation-Level Data:

<https://hifld-geoplatform.opendata.arcgis.com/datasets/hospitals>

City of New York, NYC Health:

<https://www1.nyc.gov/site/doh/covid/covid-19-data.page>

Chicago Coronavirus Latest Data:

<https://www.chicago.gov/city/en/sites/covid-19/home/latest-data.html>

National Health Commission of the PRC:

<http://www.nhc.gov.cn/xcs/yqtb/202003/bf66696029ba420098164607240074f8.shtml>

Korean Centers for Disease Control and Prevention:

http://www.cdc.go.kr/cdc_eng/

CDC, Severe Outcomes Among Patients with Coronavirus Disease 2019 (COVID-19):

<https://www.cdc.gov/mmwr/volumes/69/wr/mm6912e2.htm>

COVID-19 Information for Switzerland:

<https://www.corona-data.ch/>

Italian Department of Civil Protection, COVID Monitoring:

<http://opendatadpc.maps.arcgis.com/apps/opsdashboard/index.html#/b0c68bce2cce478eaac82fe38d4138b1>

The COVID Tracking Project:

<https://covidtracking.com/data/>

UK Office for National Statistics

<https://www.ons.gov.uk/peoplepopulationandcommunity/birthsdeathsandmarriages/deaths/bulletins/deathsregisteredweeklyinenglandandwalesprovisional/weekending24april2020>

WHO Europe, Surveillance Report:

<http://www.euro.who.int/en/health-topics/health-emergencies/coronavirus-covid-19/weekly-surveillance-report>

WHO Europe, Principles for Transition:

<http://www.euro.who.int/en/media-centre/sections/statements/2020/statement-transition-to-a-new-normal-during-the-covid-19-pandemic-must-be-guided-by-public-health-principles>

CIA World Factbook:

<https://www.cia.gov/library/publications/resources/the-world-factbook/>

Italian Ministry of Health:

<http://www.salute.gov.it/portale/nuovocoronavirus/dettaglioContenutiNuovoCoronavirus.jsp?lingua=italiano&id=5351&area=nuovoCoronavirus&menu=vuoto>

New South Wales Government:

<https://www.health.nsw.gov.au/Infectious/diseases/Pages/covid-19-latest.aspx>

Provincial Health Services Authority of Canada, BC Center for Disease Control:

<http://www.bccdc.ca/about/news-stories/stories/2020/information-on-novel-coronavirus>

Coronavirus Cases in Japan by Prefecture, Nippon Communications Foundation:

<https://www.nippon.com/en/japan-data/h00657/coronavirus-cases-in-japan-by-prefecture.html>

Secretary of Health, Mexico:

<https://www.gob.mx/salud/en>

OECD Economic Outlooks, Statistics:

https://www.oecd-ilibrary.org/economics/data/oecd-economic-outlook-statistics-and-projections_eo-data-en

Public Health Authority of Sweden:

<https://www.folkhalsomyndigheten.se/smittskydd-beredskap/utbrott/aktuella-utbrott/covid-19/bekraftade-fall-i-sverige>

National Public Health Agency of France:

<https://www.santepubliquefrance.fr/regions/ile-de-france/documents/bulletin-regional/2020/covid-19-point-epidemiologique-en-ile-de-france-du-23-avril-2020>

National Public Health Agency of France:

<https://www.santepubliquefrance.fr/regions/ile-de-france/documents/bulletin-regional/2020/covid-19-point-epidemiologique-en-ile-de-france-du-23-avril-2020>

Feature Sources:

Florida:

<https://floridahealthcovid19.gov/>