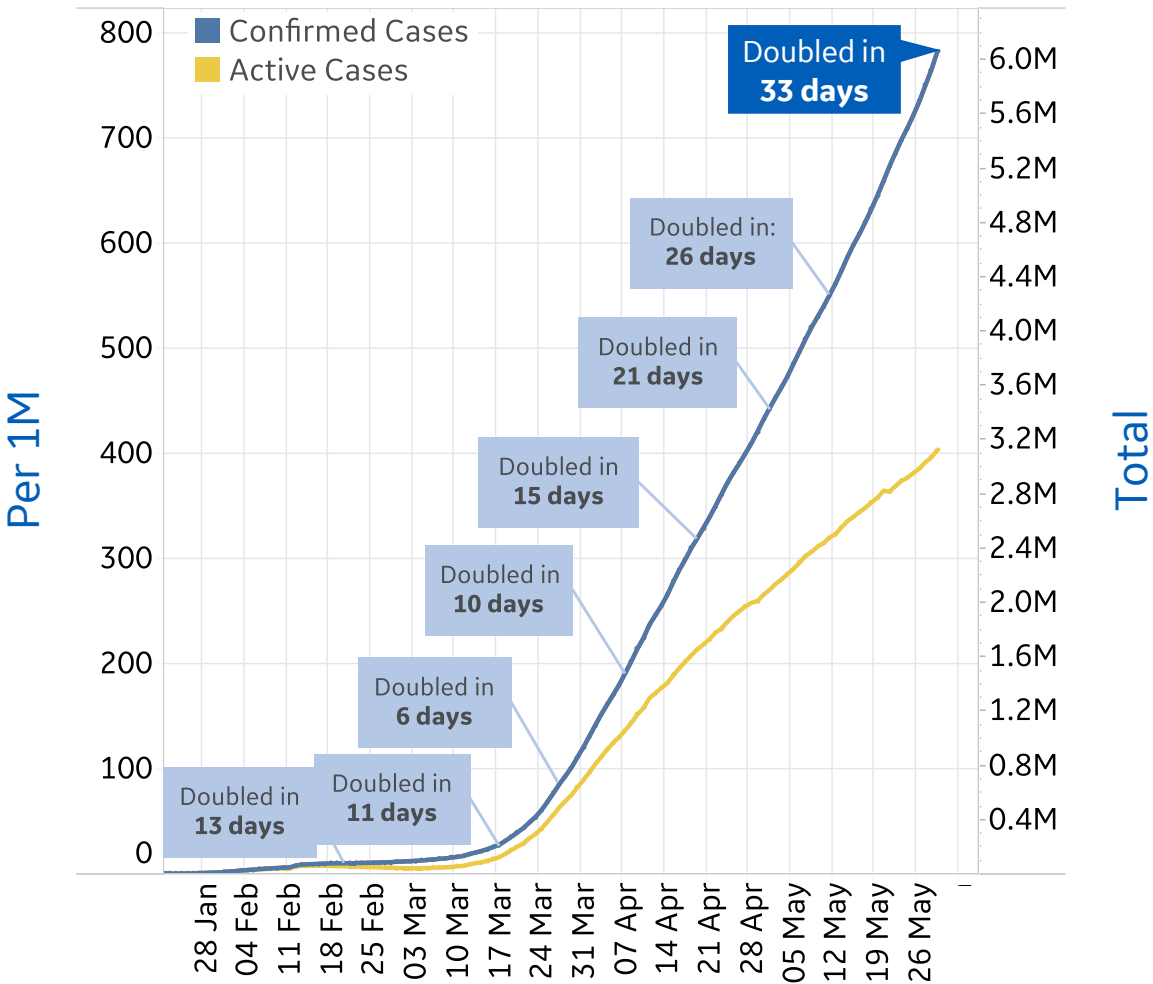




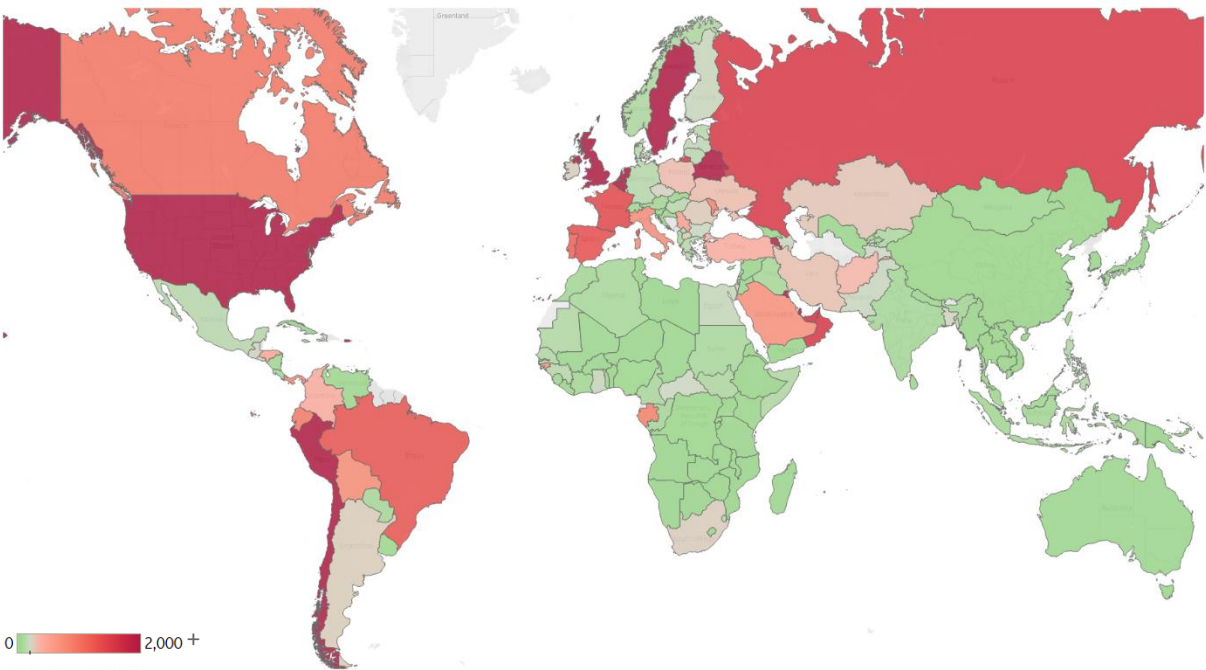
Global Confirmed & Active Cases

Trend since 22 Jan



Today per 1M

Active cases = Confirmed - Recovered - Deaths



Per 1M:	Today		Change
Active Today	403		+2%
Active	7	new	+2%
Confirmed	17	new	+2%
Deaths	1	new	+1%
Recovered	9	new	+3%

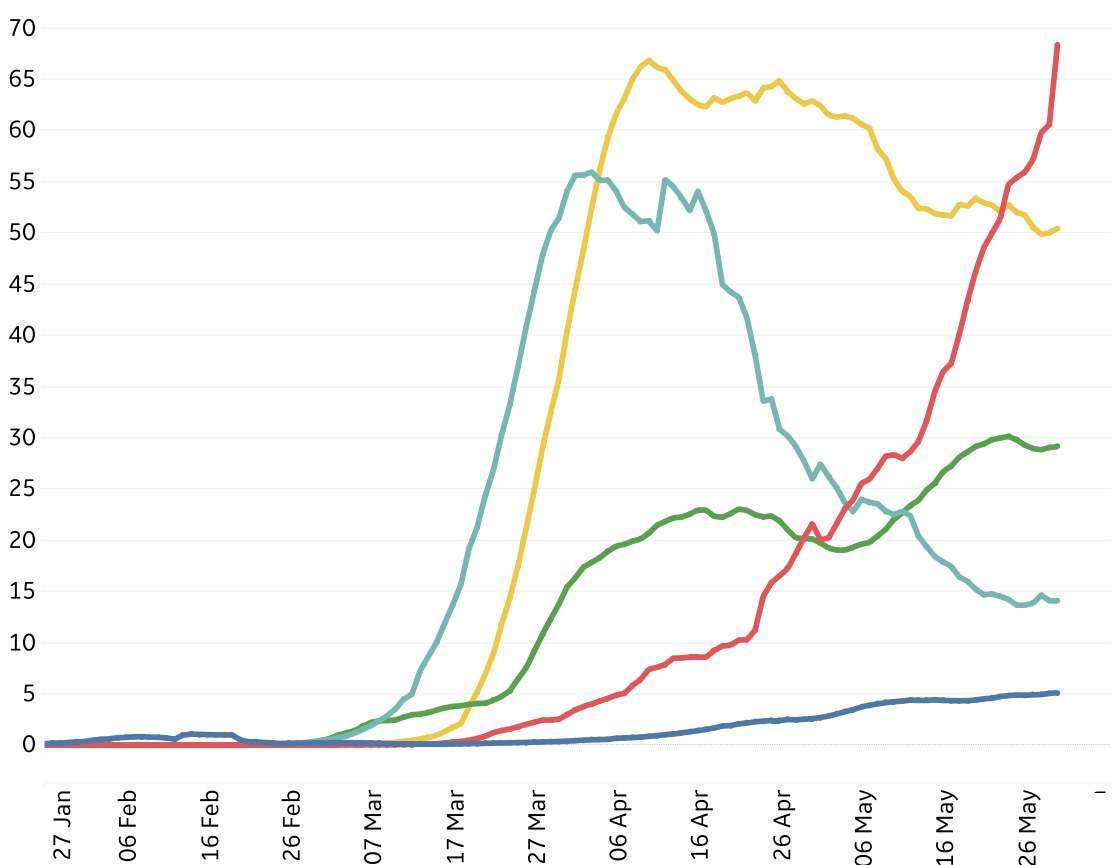


New Confirmed Cases & New Deaths

Key North America Europe Middle East Central/South America Asia

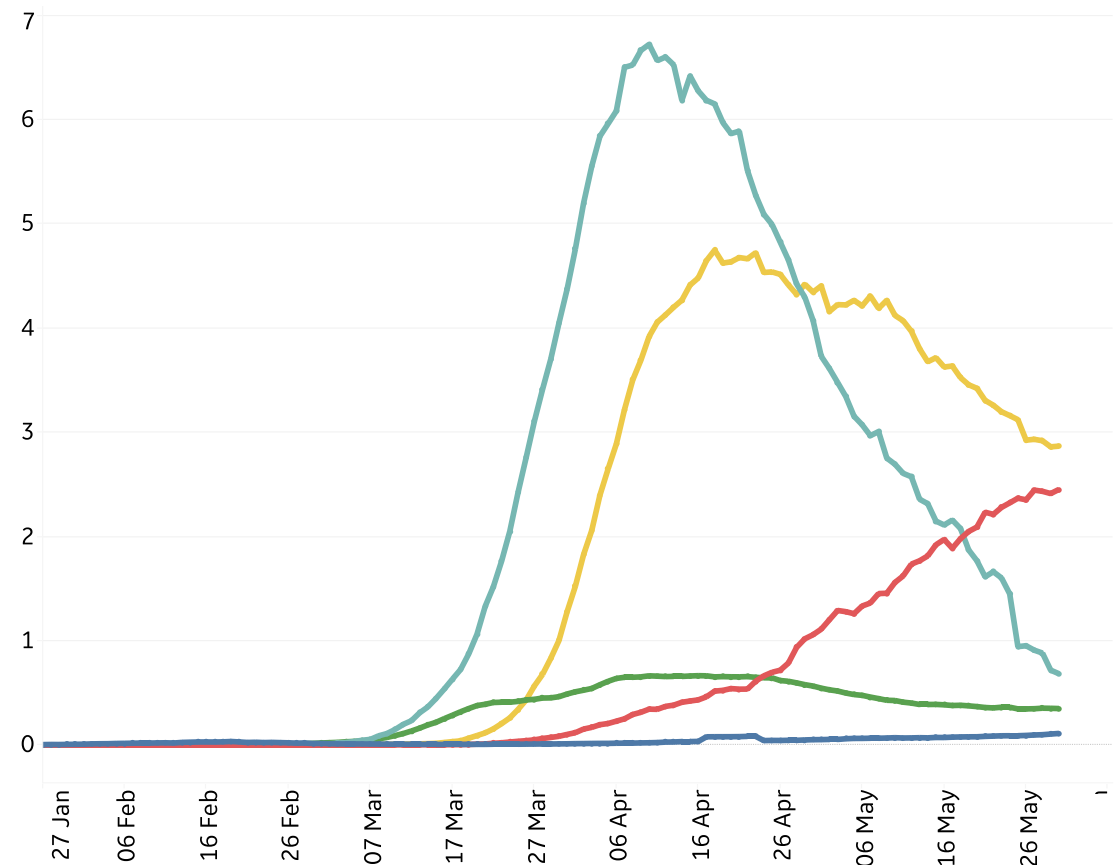
New Confirmed Cases / 1M

7-day rolling average



New Deaths / 1M

7-day rolling average





Top 50 Countries: Per 1M

1 - 25

	Active Today	Today			Total since 22 Jan		
		Confirmed	Deaths	Recovered	Total Confirmed	Total Deaths	Total Recovered
Qatar	10,200	817	0	1,817	19,181	12	8,969
US	3,776	73	3	30	5,348	314	1,258
Kuwait	3,707	236	3	207	6,133	48	2,378
UK	3,455	24	3	0	4,039	567	17
Bahrain	2,909	202	1	74	6,343	10	3,424
Belgium	2,844	11	2	8	5,021	816	1,361
Chile	2,795	221	3	96	4,962	52	2,115
Sweden	2,747	63	4	0	3,675	435	492
Peru	2,573	421	8	111	4,721	133	2,015
Belarus	2,483	95	1	61	4,409	24	1,901
Netherlands	2,353	8	1	0	2,711	348	10
Singapore	2,327	86	0	187	5,874	4	3,543
Armenia	1,850	85	2	6	3,013	43	1,119
UAE	1,627	73	0	45	3,427	26	1,774
Oman	1,564	118	0	0	2,041	8	469
Russia	1,539	61	1	57	2,717	31	1,148
France	1,403	28	1	7	2,892	441	1,048
Spain	1,320	14	0	0	5,117	580	3,216
Brazil	1,264	157	4	54	2,345	136	945
Portugal	1,140	25	1	27	3,158	137	1,882
Canada	954	20	3	16	2,429	190	1,285
Ecuador	910	0	0	0	2,186	189	1,088
Gabon	861	19	1	5	1,193	8	324
Moldova	831	50	1	44	2,007	72	1,104
Eq. Guinea	780	0	0	0	931	9	143

26 - 50

	Active Today	Today			Total since 22 Jan		
		Confirmed	Deaths	Recovered	Total Confirmed	Total Deaths	Total Recovered
EU	779	12	1	12	2,593	283	1,531
Panama	759	113	1	435	3,017	76	2,182
Italy	723	7	2	46	3,848	551	2,574
Bolivia	719	74	1	12	822	27	76
Saudi Arabia	690	46	1	53	2,395	14	1,691
Dom. Rep.	632	35	1	27	1,559	46	881
Guinea-Bissau	613	0	0	0	638	4	21
Serbia	519	3	0	9	1,303	28	756
Honduras	440	35	1	2	514	20	54
Turkey	375	12	0	12	1,934	54	1,506
Colombia	372	26	1	5	525	18	136
Afghanistan	333	22	0	1	373	6	33
Poland	304	11	0	8	623	28	291
Ukraine	302	9	0	9	531	16	213
Iran	290	27	1	23	1,773	92	1,391
Kazakhstan	273	24	0	9	553	2	278
Romania	251	8	1	11	995	65	678
Argentina	241	18	0	0	359	12	106
Ireland	241	11	1	0	5,049	334	4,473
South Africa	240	29	1	18	522	11	272
North Macedo..	239	17	2	9	1,039	63	737
Israel	221	3	0	4	1,965	33	1,711
Czechia	221	3	0	4	862	30	611
Guatemala	219	7	1	3	265	6	39
Total World	403	17	1	9	782	48	331

Worldwide there are now over 6M (6,059,017) total confirmed cases

Top 50 countries selected by Active Cases / 1M
Excluded countries with population < 1M



Top 50 Countries: Raw Volume



1 - 25

		Today			Total since 22 Jan		
	Active Cases	Confirmed	Deaths	Recovered	Total Confirmed	Total Deaths	Total Recovered
US	1,249,928	24,146	967	10,015	1,770,165	103,776	416,461
EU	346,768	5,172	343	5,356	1,154,701	126,202	681,731
Brazil	268,714	33,274	956	11,416	498,440	28,834	200,892
UK	234,574	1,612	215	15	274,219	38,458	1,187
Russia	224,551	8,952	181	8,212	396,575	4,555	167,469
France	91,592	1,829	57	465	188,752	28,774	68,386
Peru	84,853	13,892	272	3,656	155,671	4,371	66,447
Spain	61,727	664	4	0	239,228	27,125	150,376
Chile	53,430	4,220	53	1,833	94,858	997	40,431
Italy	43,691	416	111	2,789	232,664	33,340	155,633
Netherlands	40,312	132	20	0	46,460	5,970	178
Canada	36,005	772	96	612	91,681	7,159	48,517
Belgium	32,964	125	23	87	58,186	9,453	15,769
Turkey	31,604	983	26	1,021	163,103	4,515	126,984
Qatar	29,387	2,355	0	5,235	55,262	36	25,839
Sweden	27,747	637	45	0	37,113	4,395	4,971
Iran	24,389	2,282	57	1,896	148,950	7,734	116,827
Saudi Arabia	24,021	1,618	22	1,870	83,384	480	58,883
Belarus	23,465	894	5	574	41,658	229	17,964
Colombia	18,908	1,328	36	248	26,734	891	6,935
Ecuador	16,047	0	0	0	38,571	3,334	19,190
UAE	16,088	726	2	449	33,896	262	17,546
Kuwait	15,831	1,008	11	883	26,192	205	10,156
Singapore	13,616	506	0	1,096	34,366	23	20,727
South Africa	14,208	1,727	32	1,023	30,967	643	16,116

26 - 50

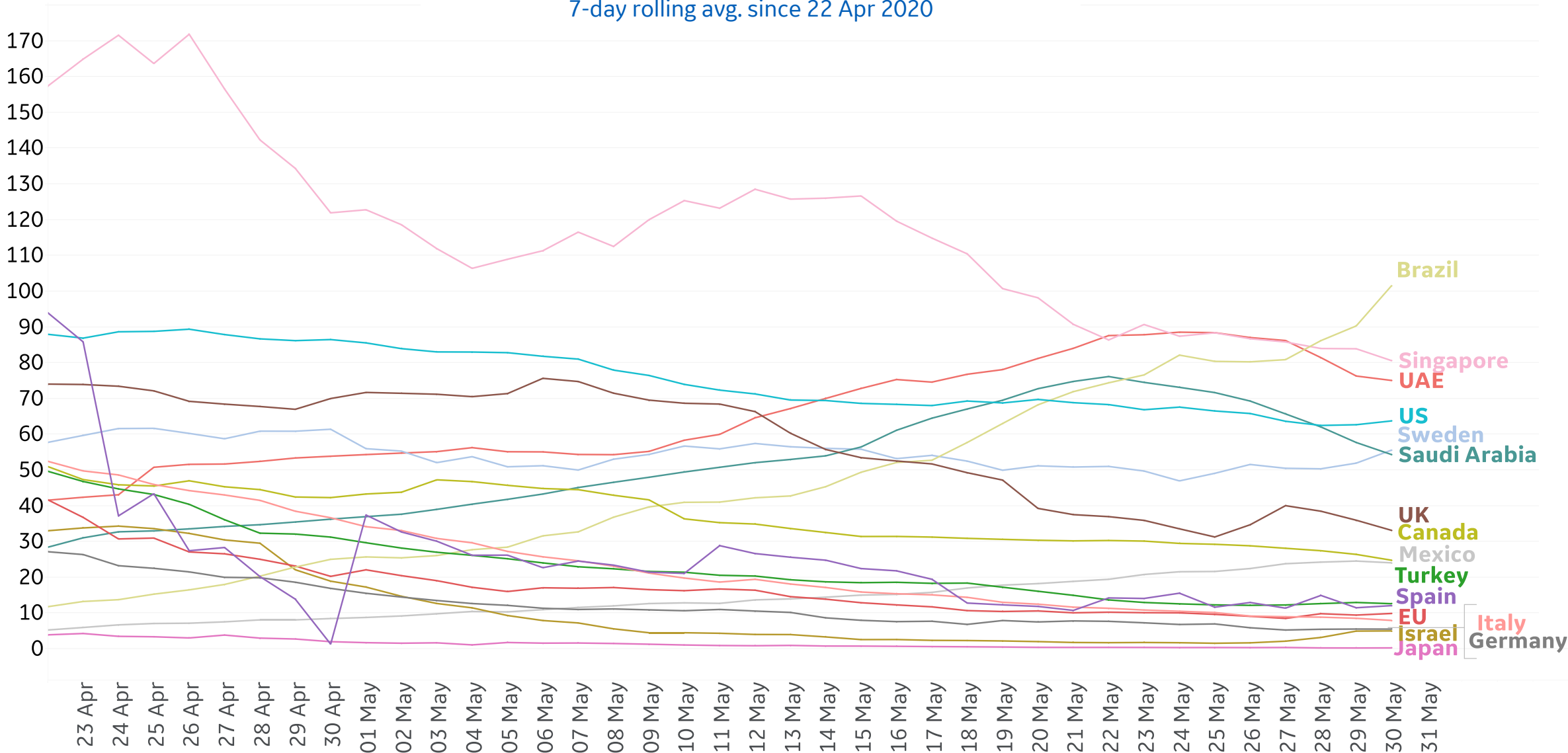
		Today			Total since 22 Jan		
	Active Cases	Confirmed	Deaths	Recovered	Total Confirmed	Total Deaths	Total Recovered
Ukraine	13,197	393	17	377	23,204	696	9,311
Afghanistan	12,973	866	3	44	14,525	249	1,303
Portugal	11,621	257	13	275	32,203	1,396	19,186
Poland	11,494	416	10	324	23,571	1,061	11,016
Argentina	10,898	795	8	0	16,214	528	4,788
Bolivia	8,393	861	10	140	9,592	310	889
Oman	7,985	603	2	0	10,423	42	2,396
Dom. Rep.	6,853	377	10	291	16,908	498	9,557
Armenia	5,483	251	7	20	8,927	127	3,317
Kazakhstan	5,124	450	1	163	10,382	38	5,220
Bahrain	4,950	344	2	126	10,793	17	5,826
Romania	4,828	151	11	217	19,133	1,259	13,046
Serbia	4,533	27	0	82	11,381	242	6,606
Honduras	4,357	342	5	17	5,094	201	536
Guatemala	3,931	132	12	58	4,739	102	706
Moldova	3,352	202	3	177	8,098	291	4,455
Panama	3,274	487	4	1,874	13,018	330	9,414
Czechia	2,365	34	0	46	9,230	319	6,546
Israel	1,917	25	0	35	17,012	284	14,811
Gabon	1,916	42	2	13	2,655	17	722
Guinea-Bissau	1,206	0	0	0	1,256	8	42
Ireland	1,189	53	6	0	24,929	1,651	22,089
Eq. Guinea	1,094	0	0	0	1,306	12	200
North Macedo..	498	35	5	19	2,164	131	1,535
Total World	3,125,198	134,742	4,259	71,158	6,059,017	369,126	2,564,693

Reported deaths in **Russia** have increased 15% since 29 May

Top 50 countries selected by Active Cases / 1M
Excluded countries with population < 1M



7-day rolling avg. since 22 Apr 2020

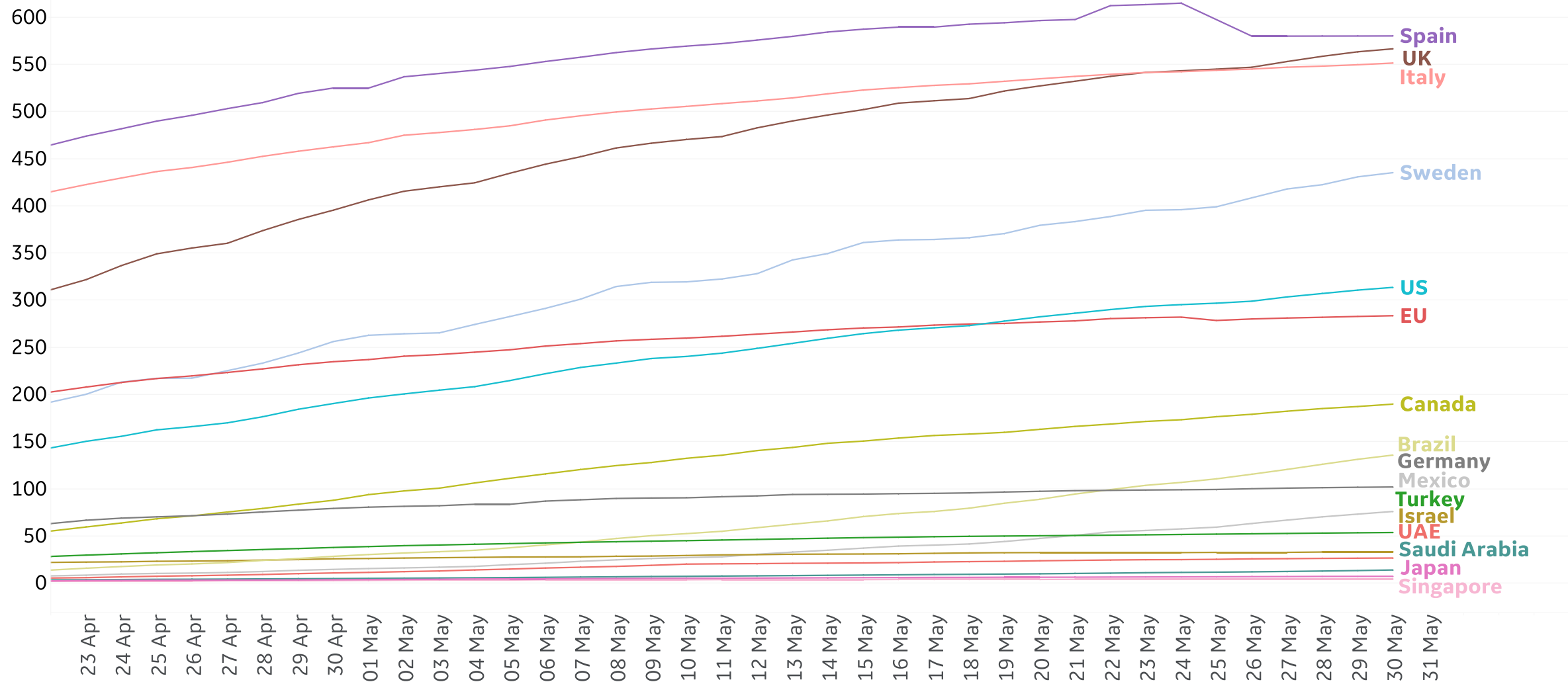




Cumulative Deaths in Select Countries

Updated 31 May 2020, 3:30 GMT

Cumulative Deaths / 1M
Since 22 Apr 2020

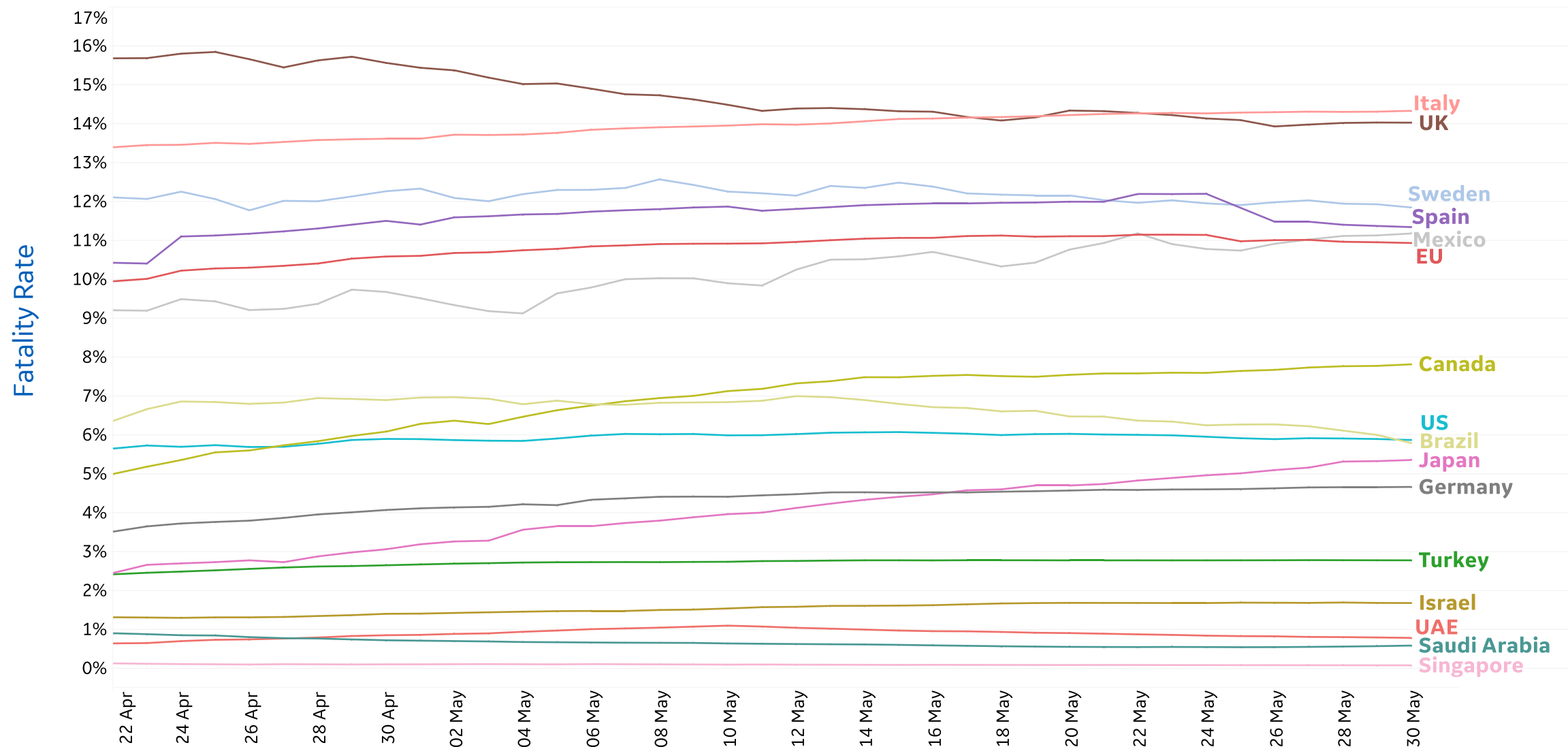




Fatality Rate in Select Countries

Deaths / Confirmed Cases

Since 22 Apr 2020

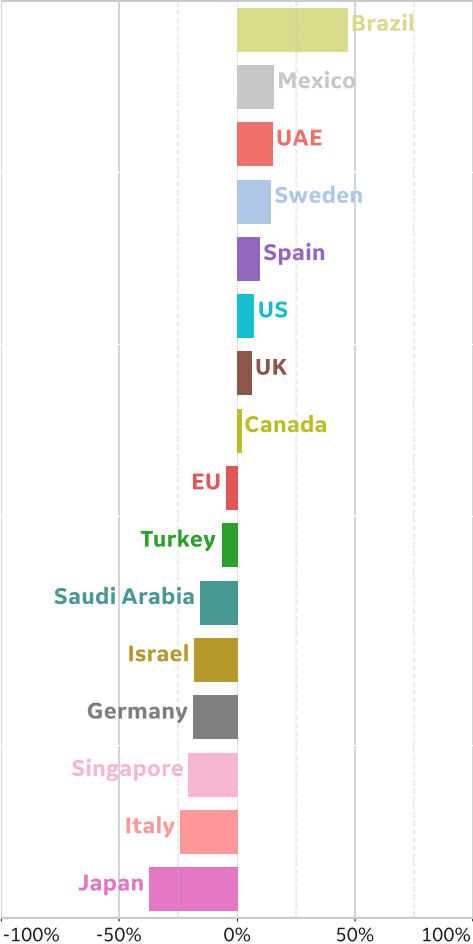




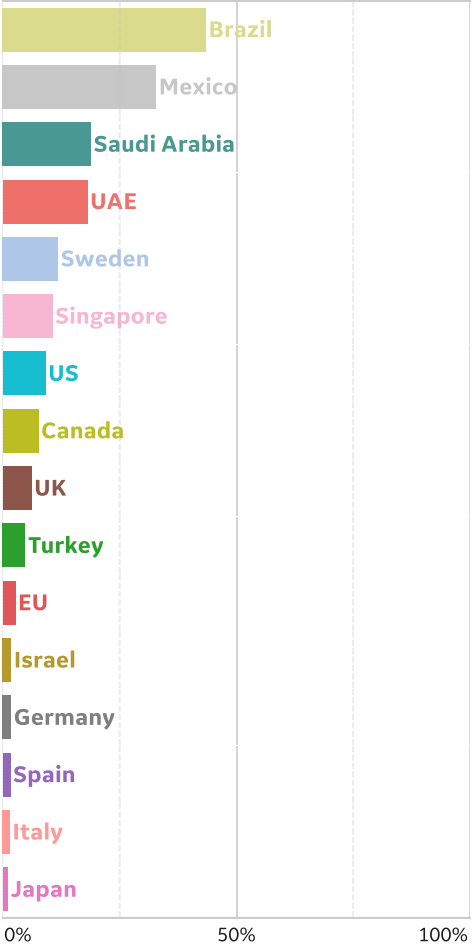
% Change in Case Volume in Select Countries

Over Previous 7 days

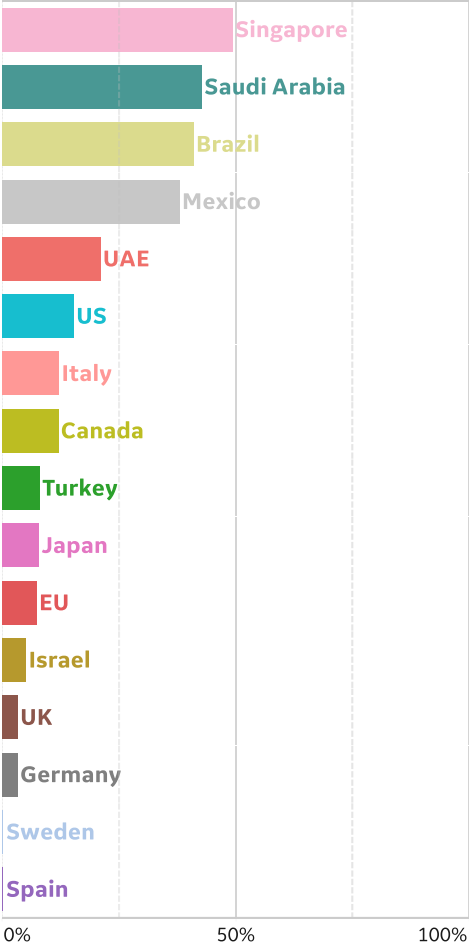
Active Cases



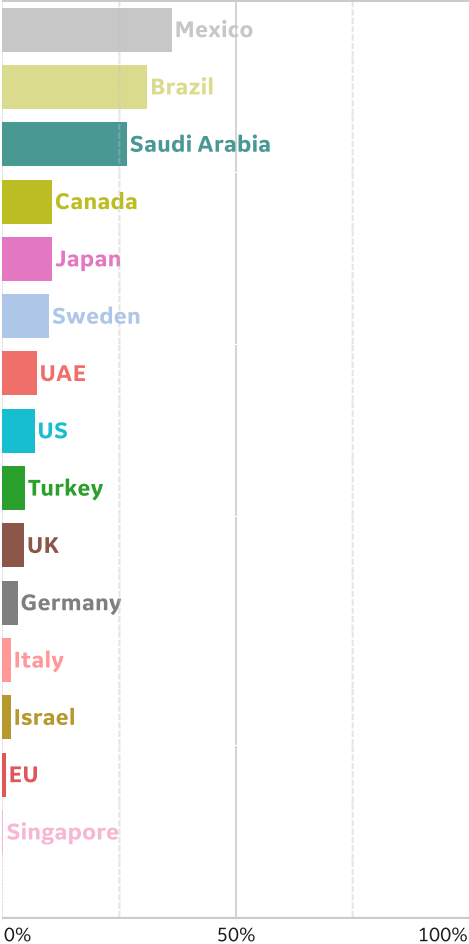
Confirmed Cases



Reported Recoveries



Reported Deaths





Per 1M in Region

	Today	Change
Active Cases	3,237	+0.6%
Confirmed	23 new	+1%
Deaths	3 new	+1%
Recovered	1 new	+0.3%

Most Active Cases per 1M

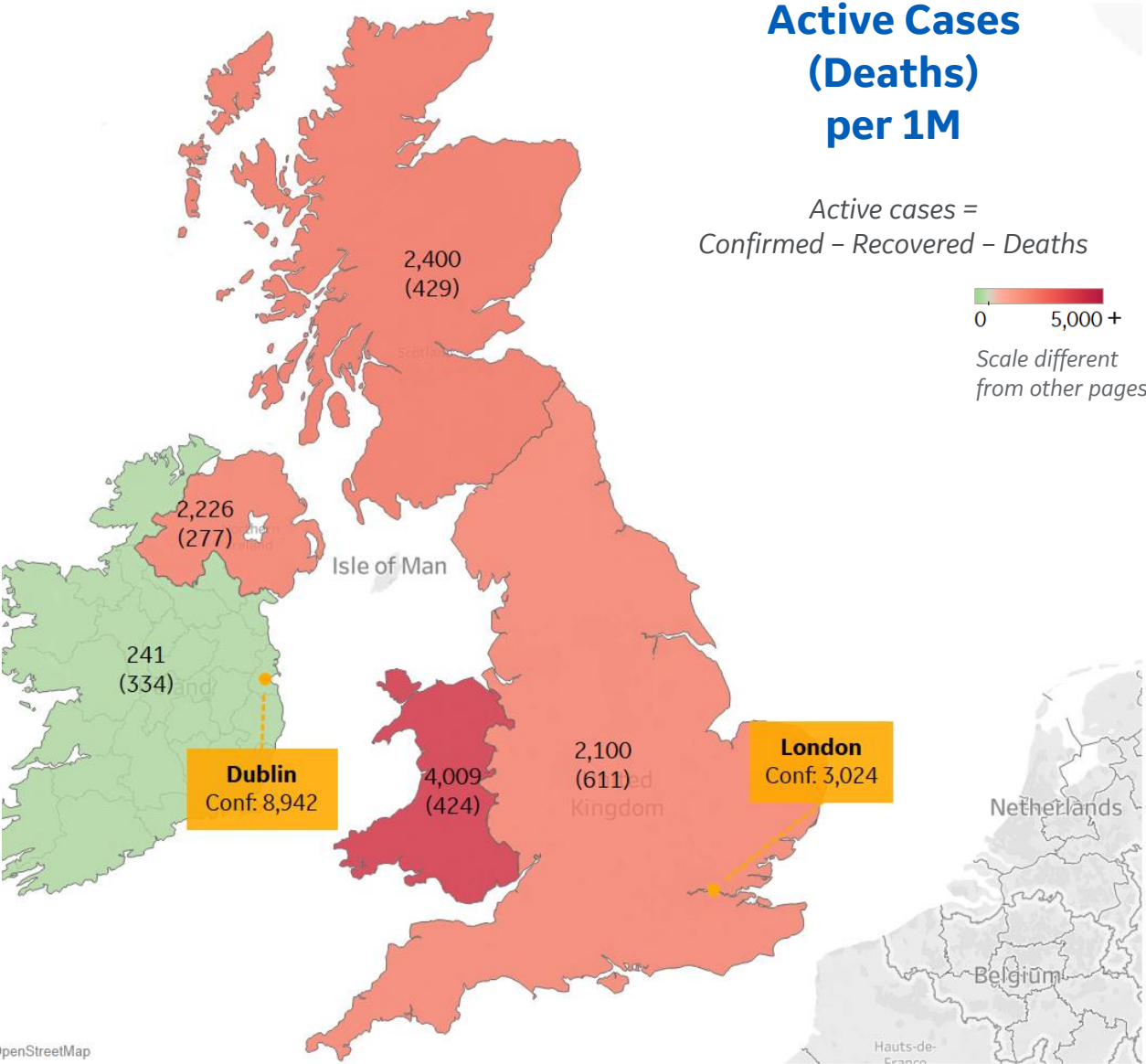
Wales	4,009
Scotland	2,400
Northern Ireland	2,226
England	2,100
Ireland	241

Active Cases (Deaths) per 1M

Active cases =
Confirmed – Recovered – Deaths

0 5,000+

Scale different
from other pages



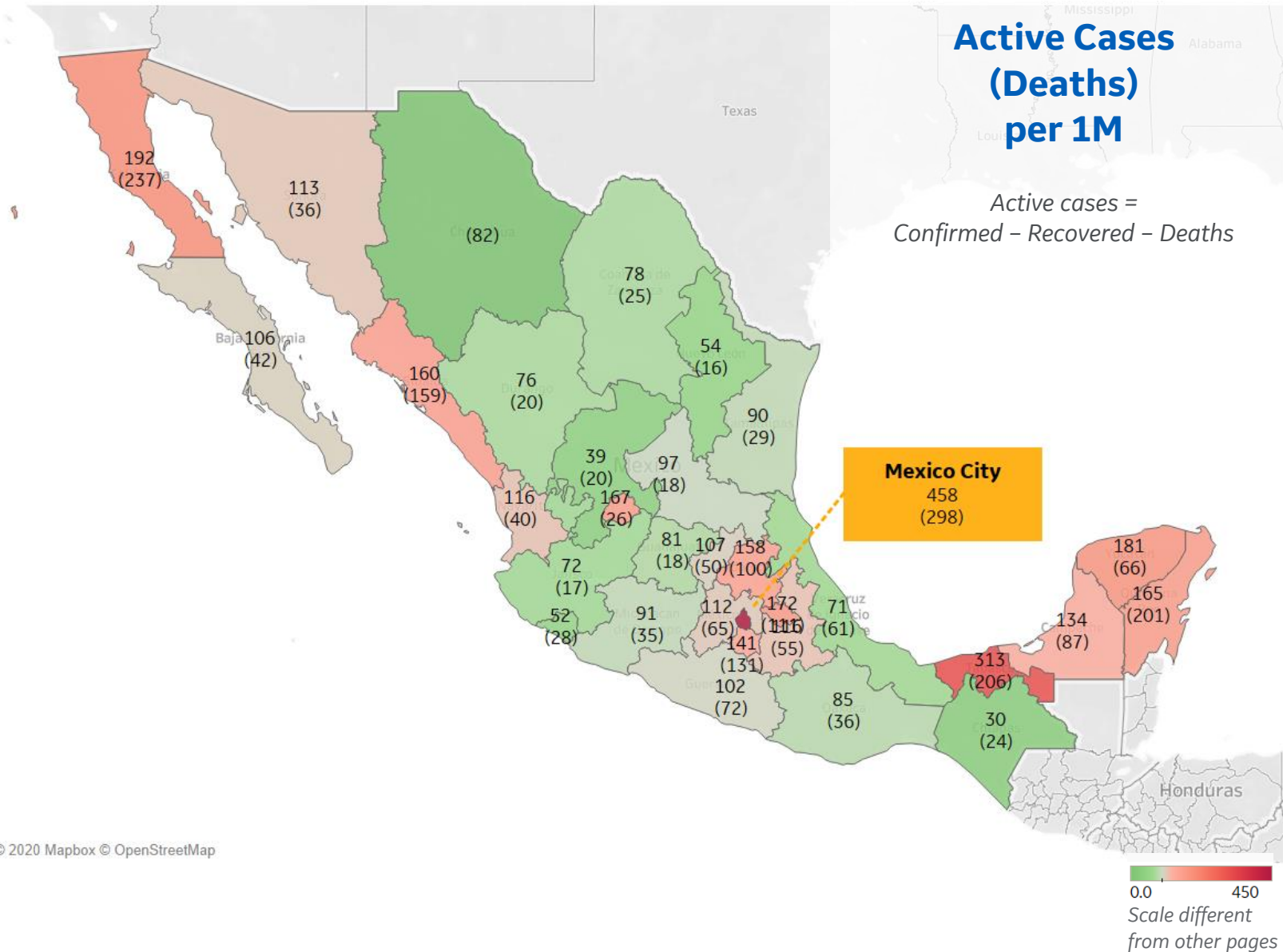


Per 1M in Region

	Today	Change
Active Cases	128	+2%
Confirmed	22 new	+3%
Deaths	3 new	+4%
Recovered	17 new	+4%

Most Active Cases per 1M

Distrito Federal	458
Tabasco	313
Baja California	192
Yucatan	181
Tlaxcala	172
Aguascalientes	167
Quintana Roo	165
Sinaloa	160
Hidalgo	158
Morelos	141





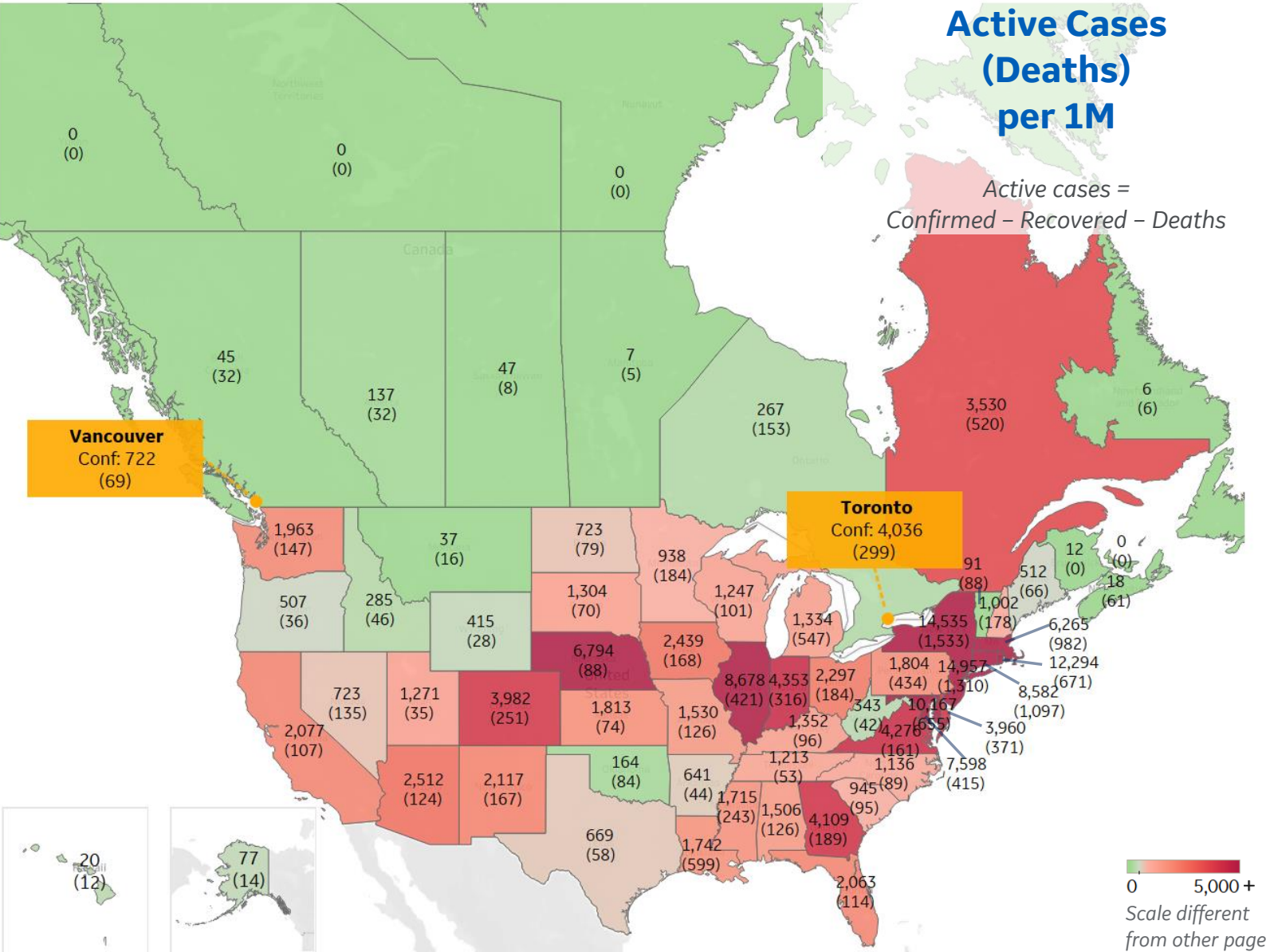
US & Canada, Total to Date

Per 1M in Region

	Today	Change
Active Cases	3,487	+1%
Confirmed	68 new	+1%
Deaths	3 new	+1%
Recovered	29 new	+2%

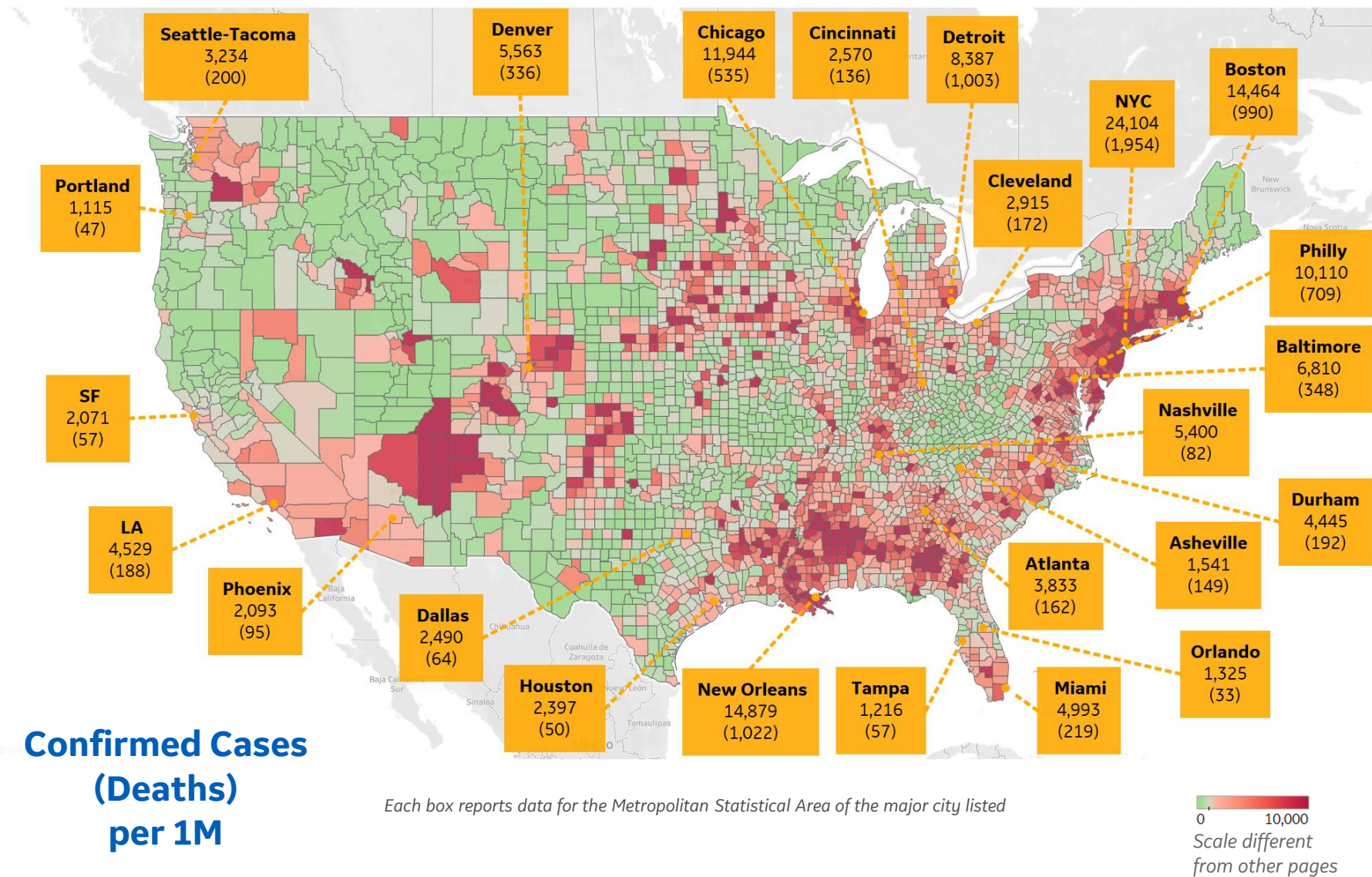
Most Active Cases per 1M

New Jersey	14,957
New York	14,535
Rhode Island	12,294
DC	10,167
Illinois	8,678
Connecticut	8,582
Maryland	7,598
Nebraska	6,794
Massachusetts	6,265
Indiana	4,353





US by County & Metro, Total to Date



Top 10 Northeast Counties

Total Confirmed Cases / 1M

Rockland County, NY	39,730
Westchester County, NY	33,973
Passaic County, NJ	31,208
Nassau County, NY	29,282
Hudson County, NJ	27,945
Union County, NJ	27,368
Orange County, NY	26,439
Suffolk County, NY	26,313
New York City*	23,695
Suffolk County, MA	21,491

Top 10 Other US Counties

Total Confirmed Cases / 1M

Orleans Parish, LA	17,840
Jefferson Parish, LA	16,782
Prince George's County, MD	14,635
Cook County, IL	13,673
District of Columbia, DC	11,320
Wayne County, MI	11,262
Yakima County, WA	11,163
Lake County, IL	10,646
Kane County, IL	10,199
Prince William County, VA	9,627

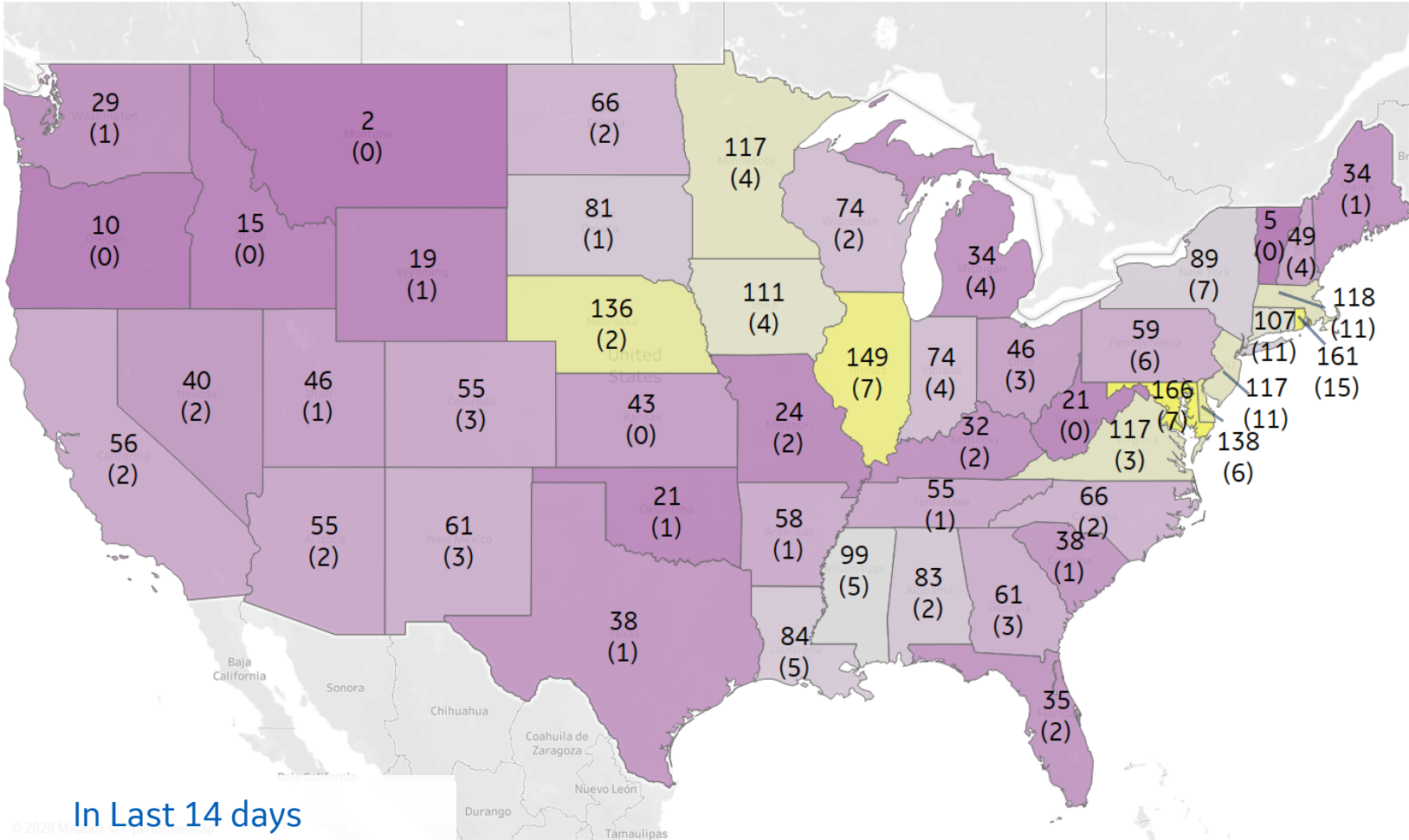
Note: Includes counties ≥ 250K population

* New York City counties aggregated into one reporting area



US, New in Last 14 days

Updated 31 May 2020, 3:30 GMT 15





Per 1M in Region

	Today	Change
Active Cases	933	+8%
Confirmed	108 new	+7%
Deaths	3 new	+4%
Recovered	38 new	+6%

Most Active Cases per 1M

Chile	2,795
Peru	2,573
Brazil	1,264
Ecuador	910
Panama	759
Bolivia	719
Dom. Rep.	632
Honduras	440
Colombia	372
Argentina	241

* Excludes regions with population < 1M





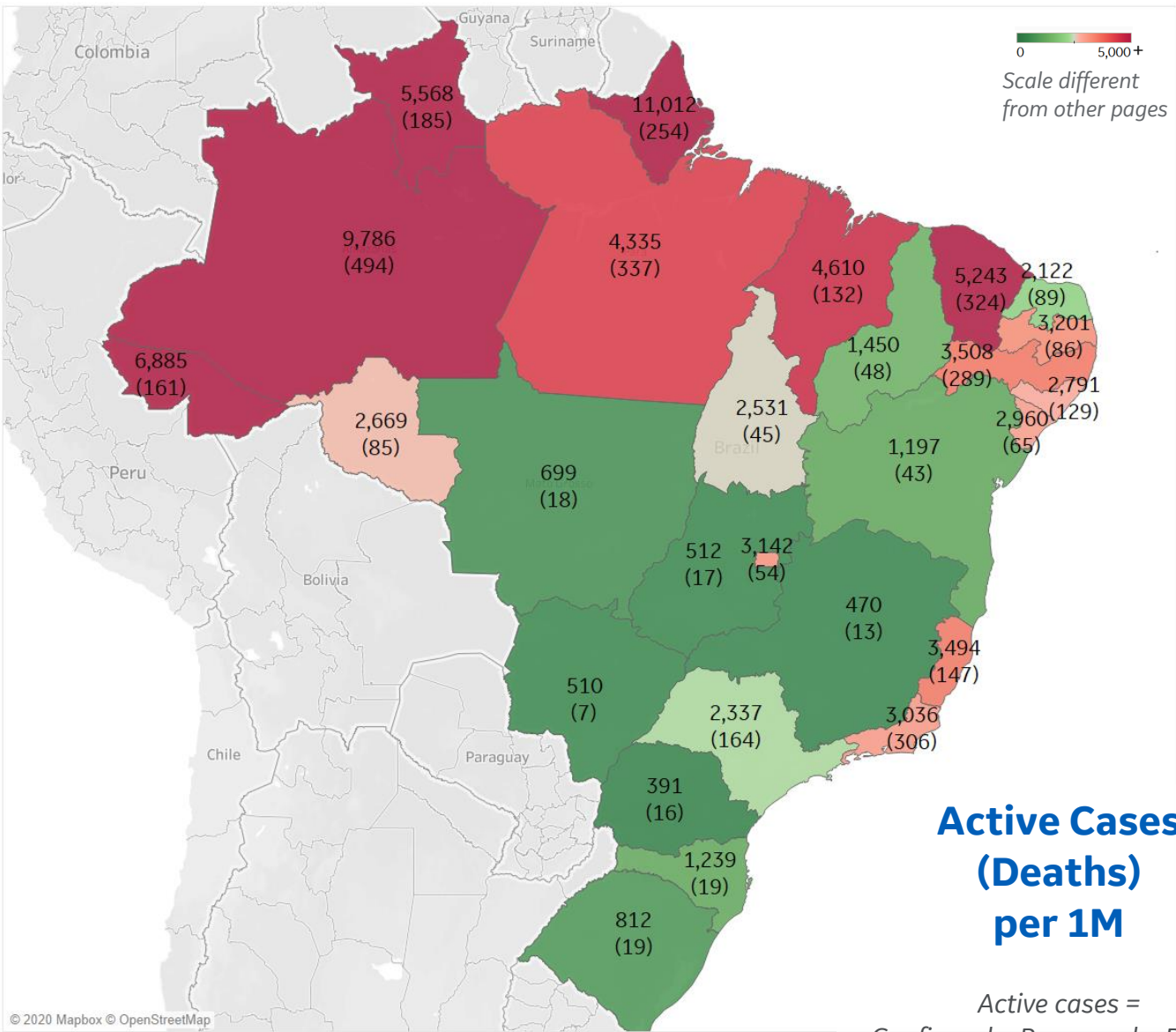
Per 1M in Region

	Today	Change
Active Cases	1,264	+8%
Confirmed	157 new	+7%
Deaths	4 new	+3%
Recovered	54 new	+6%

Most Active Cases per 1M

Amazonas	9,786
Ceará	5,093
Maranhão	4,610
Pará	4,335
Pernambuco	3,498
Espírito Santo	3,344
Paraíba	3,201
Distrito Federal	3,142
Rio de Janeiro	3,036
Sergipe	2,960

* Excludes regions with population < 1M





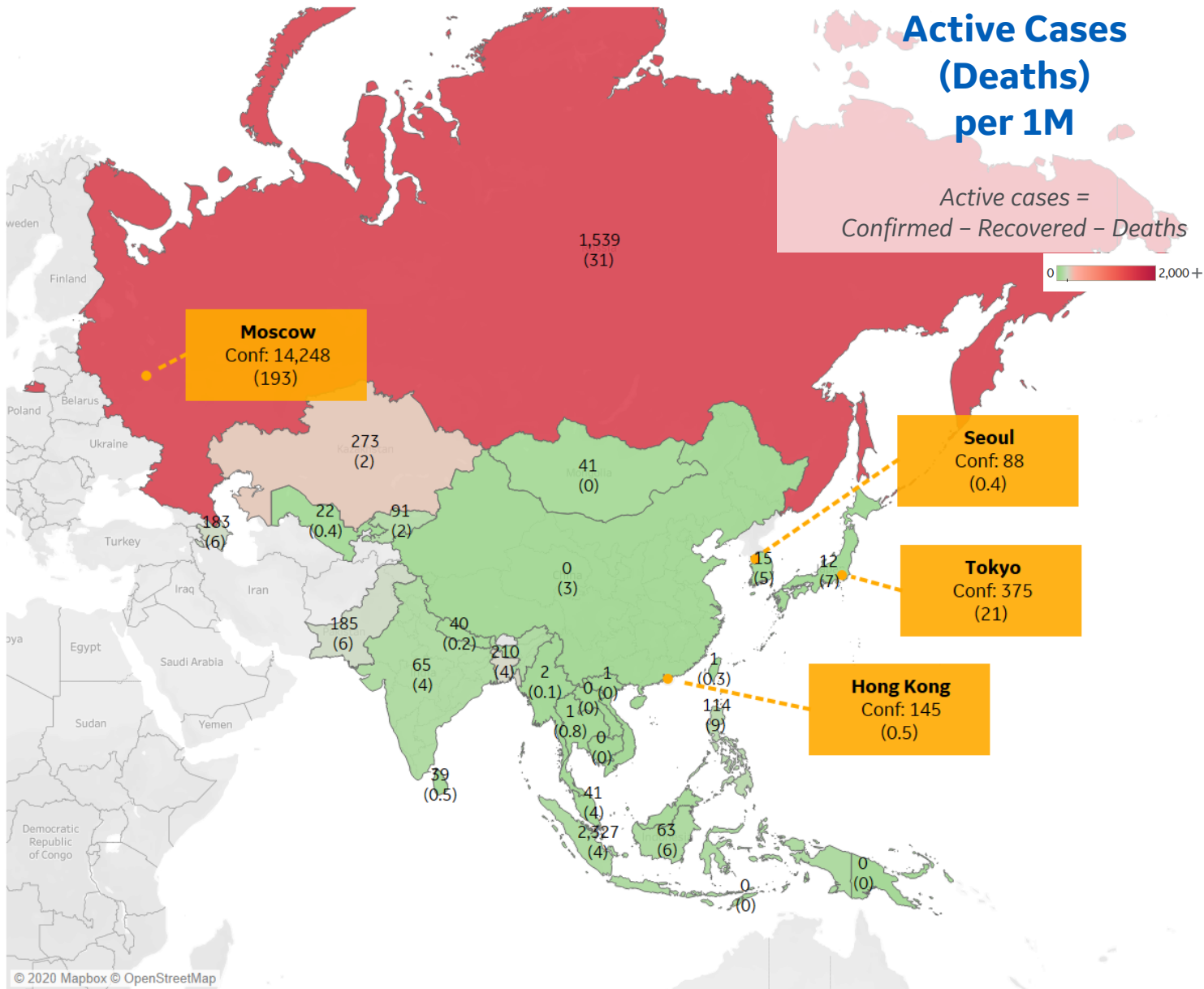
Per 1M in Region

	Today	Change
Active Cases	103	+1%
Confirmed	6 new	+3%
Deaths	0.1 new	+3%
Recovered	4 new	+4%

Most Active Cases per 1M

Singapore	2,327
Russia	1,539
Kazakhstan	273
Bangladesh	210
Pakistan	185
Azerbaijan	183
Philippines	114
Kyrgyzstan	91
India	65
Indonesia	63

* Excludes regions with population < 1M





Per 1M in Region

	Today	Change
Active Cases	15	+0%
Confirmed	0.3 new	+0.1%
Deaths	0 new	+0%
Recovered	1 new	+0.4%

Most Active Cases per 1M

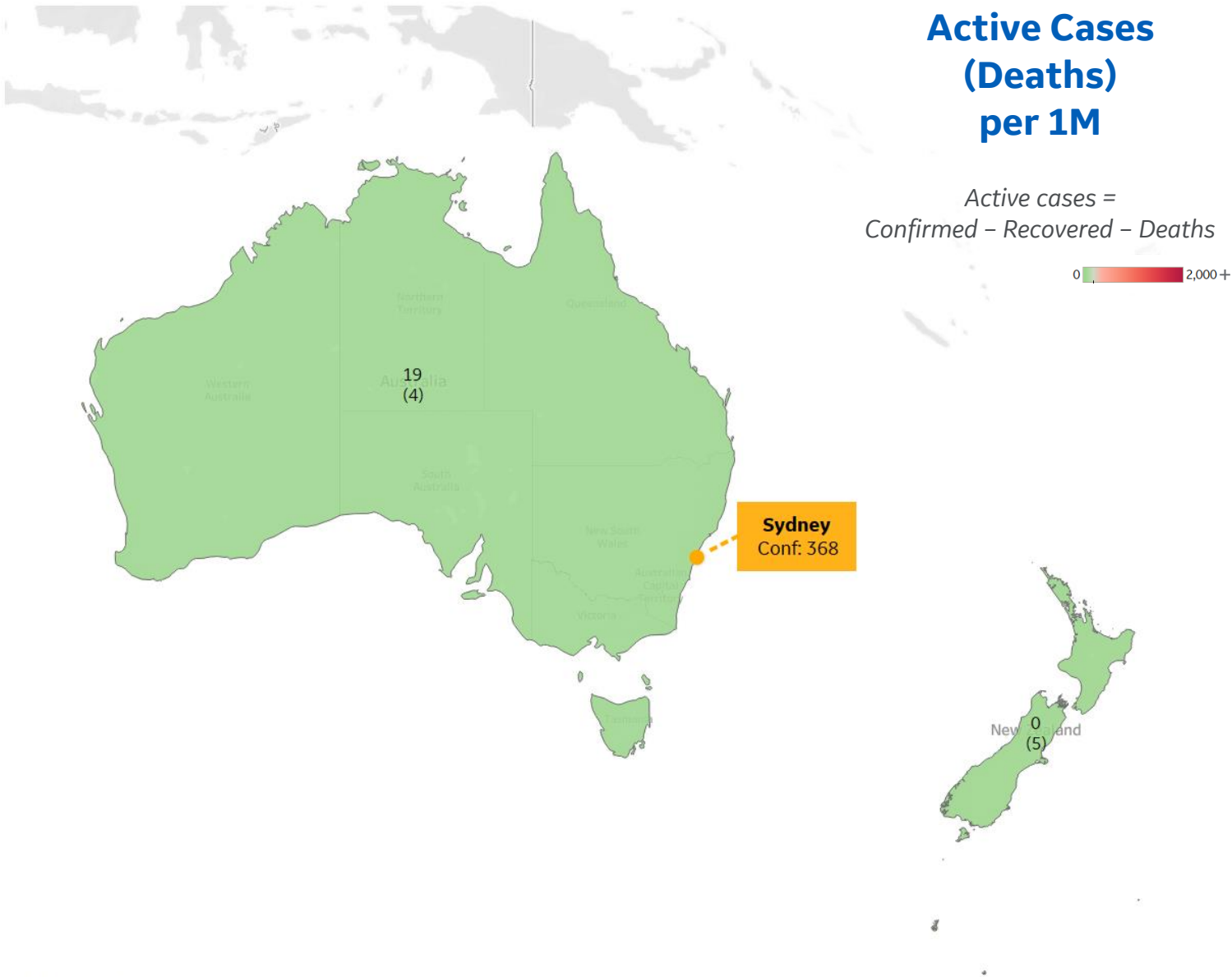
Australia	19
New Zealand	0

* Excludes regions with population < 1M

Active Cases (Deaths) per 1M

Active cases =
Confirmed - Recovered - Deaths

0 2,000 +





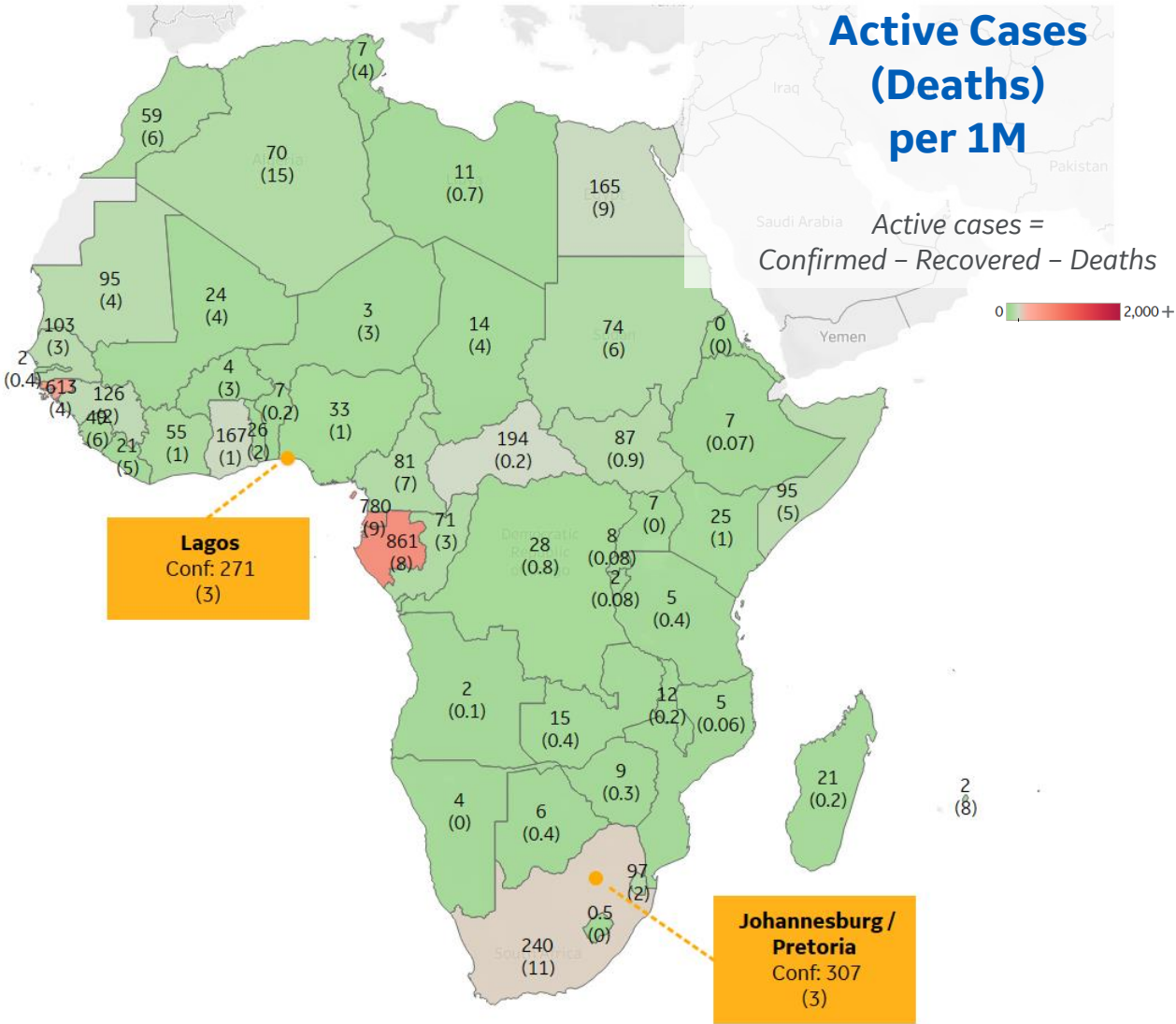
Per 1M in Region

	Today	Change
Active Cases	59	+4%
Confirmed	5 new	+5%
Deaths	0.1 new	+4%
Recovered	2 new	+5%

Most Active Cases per 1M

Gabon	861
Eq. Guinea	780
Guinea-Bissau	613
South Africa	240
Central African R..	194
Ghana	167
Egypt	165
Guinea	126
Senegal	103
Eswatini	97

* Excludes regions with population < 1M





Sources



**** Per 1M = Per 1 Million Population unless otherwise noted**

Johns Hopkins Coronavirus Resource Center:

<https://coronavirus.jhu.edu/map.html>

Worldometer Coronavirus Reporting:

<https://www.worldometers.info/coronavirus/>

Public Health England:

<https://www.gov.uk/government/publications/covid-19-track-coronavirus-cases>

US Department of Homeland Security, Homeland Infrastructure Foundation-Level Data:

<https://hifld-geoplatform.opendata.arcgis.com/datasets/hospitals>

City of New York, NYC Health:

<https://www1.nyc.gov/site/doh/covid/covid-19-data.page>

Chicago Coronavirus Latest Data:

<https://www.chicago.gov/city/en/sites/covid-19/home/latest-data.html>

National Health Commission of the PRC:

<http://www.nhc.gov.cn/xcs/yqtb/202003/bf66696029ba420098164607240074f8.shtml>

Korean Centers for Disease Control and Prevention:

http://www.cdc.go.kr/cdc_eng/

CDC, Severe Outcomes Among Patients with Coronavirus Disease 2019 (COVID-19):

<https://www.cdc.gov/mmwr/volumes/69/wr/mm6912e2.htm>

COVID-19 Information for Switzerland:

<https://www.corona-data.ch/>

WHO Europe, Surveillance Report:

<http://www.euro.who.int/en/health-topics/health-emergencies/coronavirus-covid-19/weekly-surveillance-report>

WHO Europe, Principles for Transition:

<http://www.euro.who.int/en/media-centre/sections/statements/2020/statement-transition-to-a-new-normal-during-the-covid-19-pandemic-must-be-guided-by-public-health-principles>

UK Office for National Statistics

<https://www.ons.gov.uk/peoplepopulationandcommunity/birthsdeathsandmarriages/deaths/bulletins/deathsregisteredweeklyinenglandandwalesprovisional/weekending24april2020>

Public Health Authority of Sweden:

<https://www.folkhalsomyndigheten.se/smittskydd-beredskap/utbrott/aktuella-utbrott/covid-19/bekraftade-fall-i-sverige>

National Public Health Agency of France:

<https://www.santepubliquefrance.fr/regions/ile-de-france/documents/bulletin-regional/2020/covid-19-point-epidemiologique-en-ile-de-france-du-23-avril-2020>

Italian Department of Civil Protection, COVID Monitoring:

<http://opendatadpc.maps.arcgis.com/apps/opsdashboard/index.html#/b0c68bce2cce478eaac82fe38d4138b1>

The COVID Tracking Project:

<https://covidtracking.com/data/>

CIA World Factbook:

<https://www.cia.gov/library/publications/resources/the-world-factbook/>

Italian Ministry of Health:

<http://www.salute.gov.it/portale/nuovocoronavirus/dettaglioContenutiNuovoCoronavirus.jsp?lingua=italiano&id=5351&area=nuovoCoronavirus&menu=vuoto>

New South Wales Government:

<https://www.health.nsw.gov.au/Infectious/diseases/Pages/covid-19-latest.aspx>

Provincial Health Services Authority of Canada, BC Center for Disease Control:

<http://www.bccdc.ca/about/news-stories/stories/2020/information-on-novel-coronavirus>

Coronavirus Cases in Japan by Prefecture, Nippon Communications Foundation:

<https://www.nippon.com/en/japan-data/h00657/coronavirus-cases-in-japan-by-prefecture.html>

Coordination Center for Health Emergencies, Spain:

https://www.mscbs.gob.es/profesionales/saludPublica/ccayes/alertasActual/nCov-China/documentos/Actualizacion_78_COVID-19.pdf

CDC, National Vital Statistics Reports:

https://www.cdc.gov/nchs/data/nvsr/nvsr68/nvsr68_06-508.pdf

Secretary of Health, Mexico:

<https://www.gob.mx/salud/en>

Nursing Homes Sources:

Minnesota

<https://www.health.state.mn.us/diseases/coronavirus/situation.html>

Rhode Island

<https://ri-department-of-health-covid-19-data-rihealth.hub.arcgis.com/>

NYS

https://www.health.ny.gov/statistics/diseases/covid-19/fatalities_nursing_home_acf.pdf

NJ

https://www.nj.gov/health/cd/topics/covid2019_dashboard.shtml

Pennsylvania

https://www.health.pa.gov/topics/Documents/Diseases%20and%20Conditions/COVID-19%20LTCF%20Data_5-26-20.pdf

Massachusetts

<https://www.mass.gov/info-details/covid-19-response-reporting#nursing-home-accountability-and-support-reporting->

California

https://www.cdph.ca.gov/Programs/CID/DCDC/Pages/COVID-19/SNFsCOVID_19.aspx

Georgia

<https://dch.georgia.gov/announcement/2020-05-26/long-term-care-facility-covid-19-report>

DC

<https://coronavirus.dc.gov/page/coronavirus-data>

Colorado

https://www.cdph.ca.gov/Programs/CID/DCDC/Pages/COVID-19/SNFsCOVID_19.aspx

Indiana

<https://www.coronavirus.in.gov/2393.htm>

Iowa

<https://coronavirus.iowa.gov/pages/long-term-care>

Kentucky

<https://chfs.ky.gov/agencies/dph/covid19/LTCupdate.pdf>

Kansas, Louisiana, Maryland, Nebraska, Nevada, North Carolina, Ohio, Oklahoma, Oregon, Rhode Island, South Carolina, Texas, Utah, Virginia

<https://www.kff.org/health-costs/issue-brief/state-data-and-policy-actions-to-address-coronavirus/>