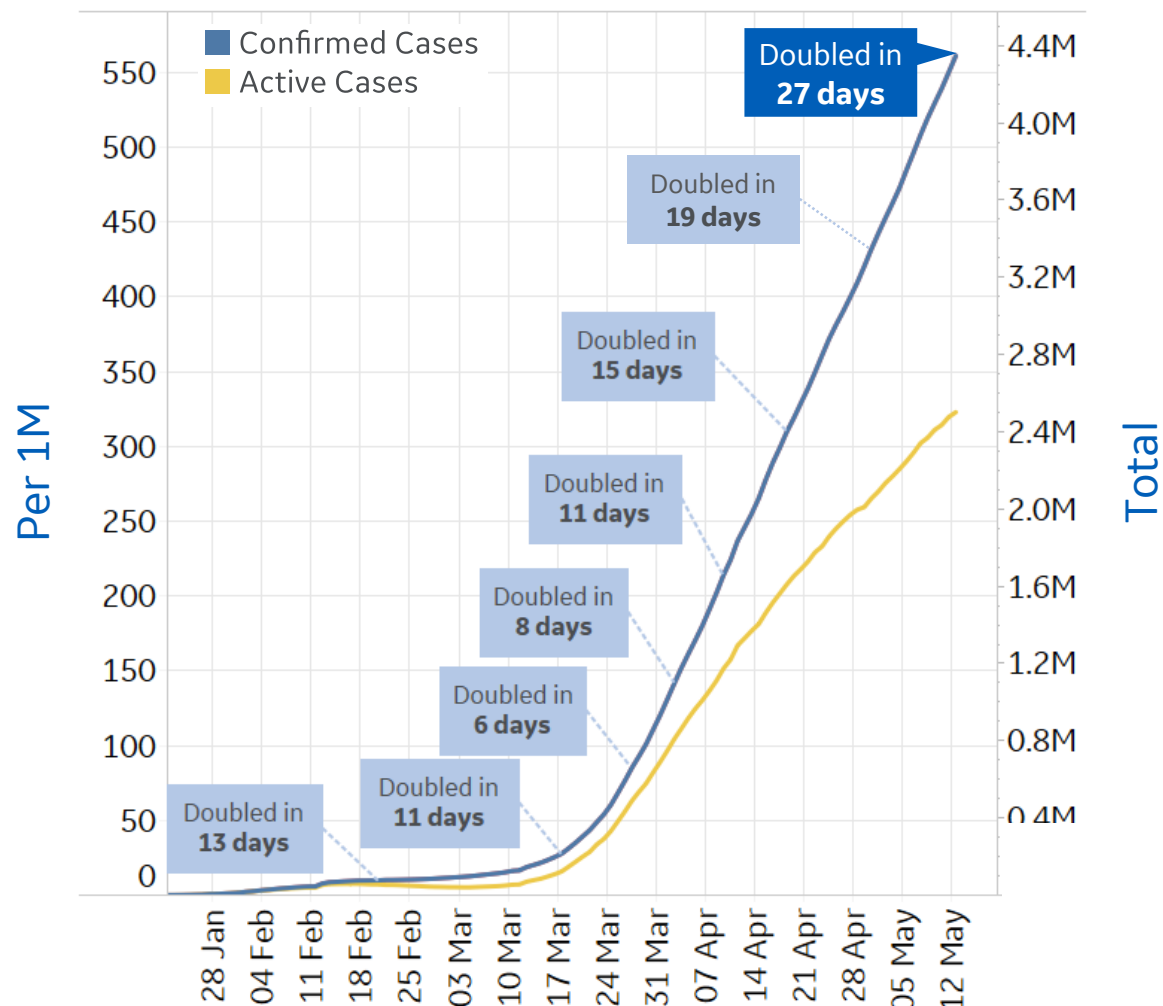




Global Confirmed & Active Cases

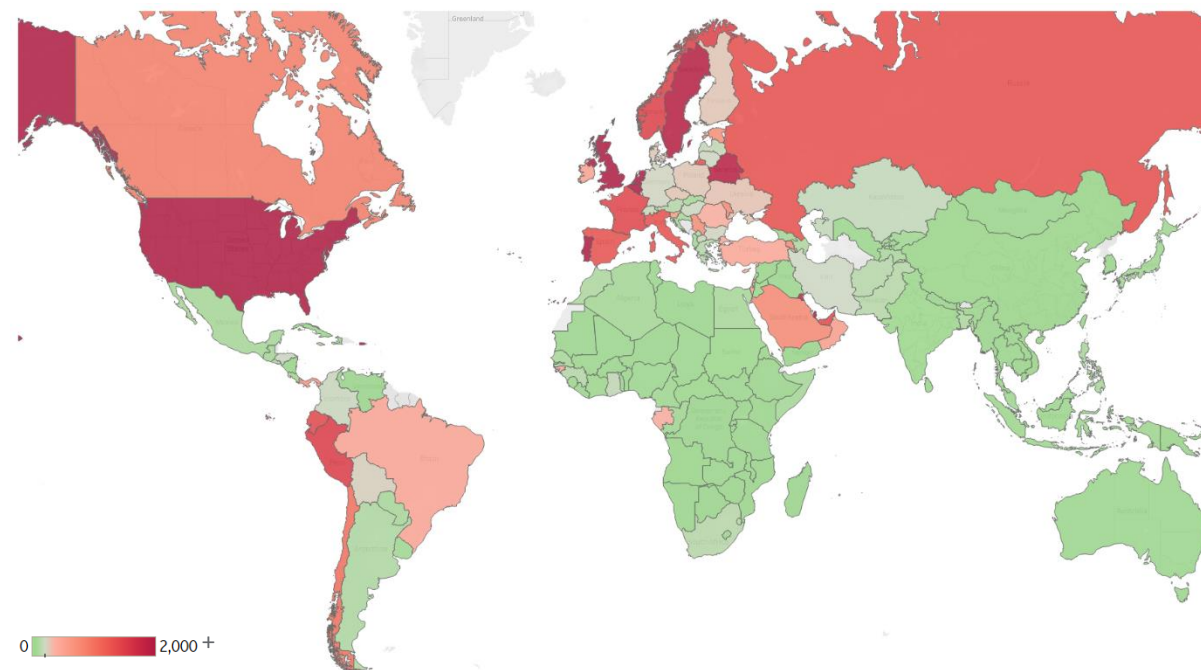


Trend since 22 Jan



Today per 1M

Active cases = Confirmed - Recovered - Deaths



Per 1M:	Today	Change
Active Today	323	+1%
Active	3 new	+1%
Confirmed	11 new	+2%
Deaths	1 new	+2%
Recovered	7 new	+4%



Top 50 Countries: Per 1M



1 - 25

	Active Today	Today			Total since 22 Jan		
		Confirmed	Deaths	Recovered	Confirmed	Total Deaths	Total Recovered
Qatar	8,116	482	0	43	9,212	5	1,091
Singapore	3,507	115	0	164	4,332	4	822
US	3,211	64	5	39	4,201	254	735
UK	2,897	48	7	0	3,403	490	15
Belgium	2,692	17	7	18	4,658	763	1,203
Portugal	2,332	21	1	17	2,759	115	312
Netherlands	2,199	13	3	0	2,533	326	9
Bahrain	2,116	167	1	8	3,418	6	1,296
Sweden	1,929	63	15	0	2,763	343	492
Belarus	1,902	101	0	78	2,733	15	816
Kuwait	1,799	176	2	38	2,582	19	764
Peru	1,511	129	3	31	2,314	66	738
Norway	1,460	3	0	0	1,508	42	6
France	1,414	N/A	1	14	2,730	415	901
Ecuador	1,401	4	0	0	1,728	132	195
UAE	1,381	73	0	52	2,061	21	660
Russia	1,316	69	1	31	1,660	15	329
Spain	1,300	14	4	39	4,891	580	3,012
Italy	1,298	15	3	58	3,673	514	1,861
Chile	1,003	139	1	39	1,799	18	778
EU	890	10	2	26	2,419	266	1,263
Canada	873	30	3	30	1,949	144	932
Saudi Arabia	774	55	0	68	1,288	8	506
Moldova	755	62	1	26	1,340	46	539
Armenia	732	61	0	23	1,255	16	506

26 - 50

	Active Today	Today			Total since 22 Jan		
		Confirmed	Deaths	Recovered	Confirmed	Total Deaths	Total Recovered
Serbia	715	6	0	26	1,178	25	438
Dom. Rep.	697	27	1	0	1,032	38	297
Estonia	688	4	0	0	1,320	46	586
Panama	607	37	1	11	2,073	59	1,406
Oman	531	58	0	7	787	3	252
Slovenia	529	1	0	0	704	50	125
Ireland	493	32	2	478	4,739	303	3,943
Israel	468	2	0	17	1,912	31	1,413
Brazil	463	56	4	27	895	62	369
Turkey	444	19	1	33	1,697	47	1,206
Guinea-Bissau	410	8	0	0	425	2	13
Gabon	379	63	0	6	451	4	68
Romania	364	12	2	15	832	54	414
Cyprus	364	2	1	0	750	14	372
Eq. Guinea	359	59	1	0	372	4	9
Ukraine	281	9	0	8	376	10	85
Czechia	274	4	1	14	772	27	471
Finland	265	9	2	0	1,093	51	776
Poland	262	7	1	7	455	23	169
Denmark	254	13	1	15	1,876	92	1,530
Bos. and Herz.	254	7	1	18	665	37	374
Bolivia	228	16	1	2	270	12	29
Bulgaria	212	7	0	3	298	14	72
Germany	209	11	1	18	2,078	94	1,775
Total World	323	11	1	7	561	38	200

New confirmed cases **Worldwide** increased 10% in the last 3 days

Top 50 countries selected by Active Cases / 1M
Excluded countries with population < 1M



Top 50 Countries: Raw Volume



1 - 25

	Active Cases	Today			Total since 22 Jan		
		Confirmed	Deaths	Recovered	Confirmed Cases	Total Deaths	Total Recovered
US	1,062,857	21,030	1,763	13,143	1,390,406	84,119	243,430
EU	396,238	4,609	987	11,728	1,077,140	118,497	562,405
UK	196,689	3,244	495	9	230,985	33,264	1,032
Russia	192,056	10,028	96	4,491	242,271	2,212	48,003
France	92,321	N/A	83	888	178,184	27,077	58,786
Italy	78,457	888	195	3,502	222,104	31,106	112,541
Spain	60,764	661	184	1,843	228,691	27,104	140,823
Peru	49,813	4,247	112	1,000	76,306	2,169	24,324
Netherlands	37,672	227	52	8	43,410	5,581	157
Canada	32,966	1,149	125	1,122	73,568	5,425	35,177
Belgium	31,201	202	82	205	53,981	8,843	13,937
Saudi Arabia	26,935	1,905	9	2,365	44,830	273	17,622
Ecuador	24,719	67	7	0	30,486	2,334	3,433
Portugal	23,775	219	12	169	28,132	1,175	3,182
Qatar	23,382	1,390	0	124	26,539	14	3,143
Singapore	20,516	675	0	958	25,346	21	4,809
Sweden	19,478	637	147	0	27,909	3,460	4,971
Chile	19,170	2,660	11	740	34,381	346	14,865
Belarus	17,968	952	4	737	25,825	146	7,711
UAE	13,657	725	3	511	20,386	206	6,523
Norway	7,914	18	1	0	8,175	229	32
Kuwait	7,683	751	7	162	11,028	82	3,263
Bahrain	3,601	285	1	13	5,816	10	2,205
Moldova	3,045	252	3	107	5,406	185	2,176
Armenia	2,170	180	1	70	3,718	48	1,500

26 - 50

	Active Cases	Today			Total since 22 Jan		
		Confirmed	Deaths	Recovered	Confirmed Cases	Total Deaths	Total Recovered
Brazil	98,473	11,923	779	5,827	190,137	13,240	78,424
Turkey	37,447	1,639	58	2,826	143,114	3,952	101,715
Germany	17,537	927	123	1,500	174,098	7,861	148,700
Ukraine	12,270	402	14	343	16,425	439	3,716
Poland	9,933	283	22	279	17,204	861	6,410
Dom. Rep.	7,566	296	7	0	11,196	409	3,221
Romania	7,005	224	34	276	16,002	1,036	7,961
Serbia	6,249	52	2	224	10,295	222	3,824
Israel	4,052	19	4	149	16,548	264	12,232
Czechia	2,932	48	7	158	8,269	290	5,047
Oman	2,713	298	0	39	4,019	17	1,289
Bolivia	2,667	184	14	26	3,148	142	339
Panama	2,621	161	4	46	8,944	256	6,067
Ireland	2,434	159	9	2,360	23,401	1,497	19,470
Bulgaria	1,474	46	1	23	2,069	96	499
Denmark	1,471	76	6	83	10,865	533	8,861
Finland	1,470	51	9	0	6,054	284	4,300
Slovenia	1,100	2	1	1	1,463	103	260
Estonia	913	5	0	0	1,751	61	777
Gabon	843	141	0	15	1,004	9	152
Bos. and Herz.	833	23	3	60	2,181	120	1,228
Guinea-Bissau	807	16	0	0	836	3	26
Eq. Guinea	503	83	2	0	522	6	13
Cyprus	439	2	1	0	905	17	449
Total World	2,501,274	85,271	5,255	55,133	4,347,018	297,197	1,548,547

49% of Global reported deaths are in
the **UK, Spain, France, Italy, and New York State**

Top 50 countries selected by Active Cases / 1M
Excluded countries with population < 1M

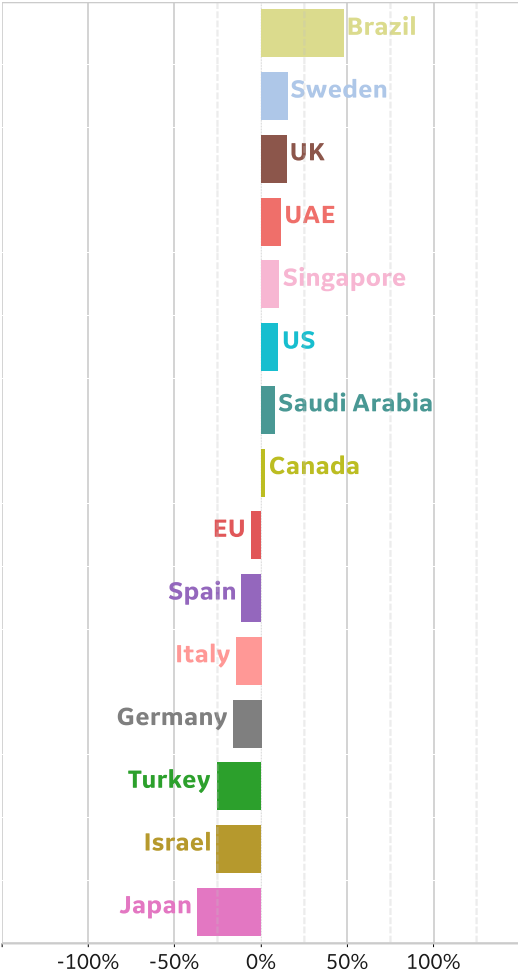


% Change in Case Volume in Select Countries

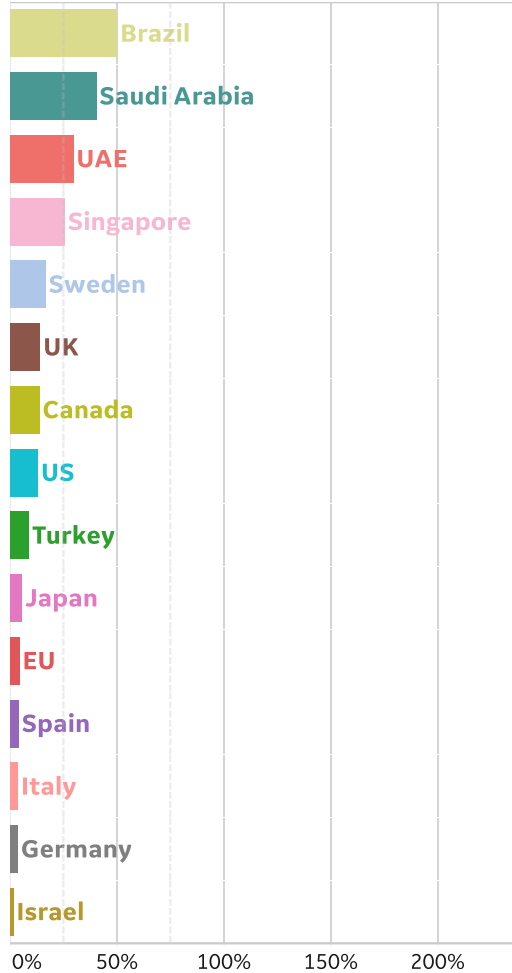


Over Previous 7 days

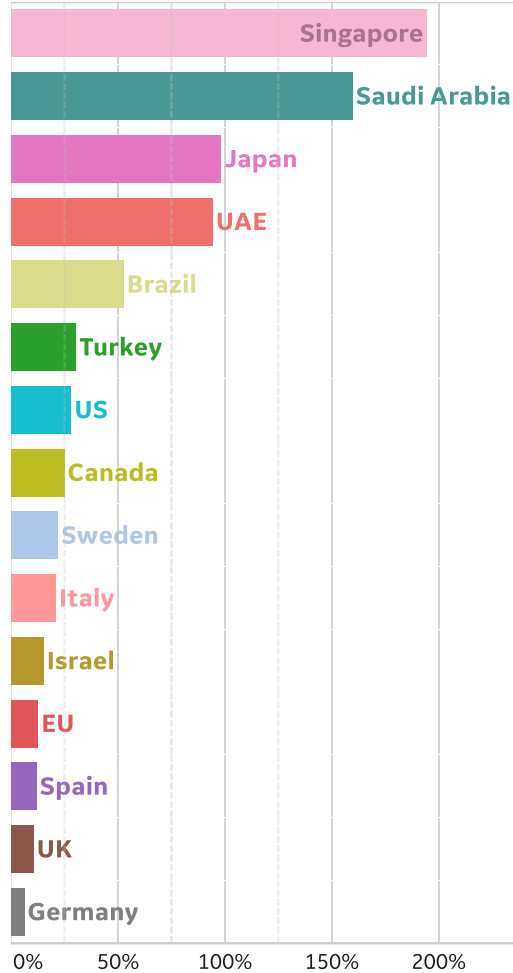
Active Cases



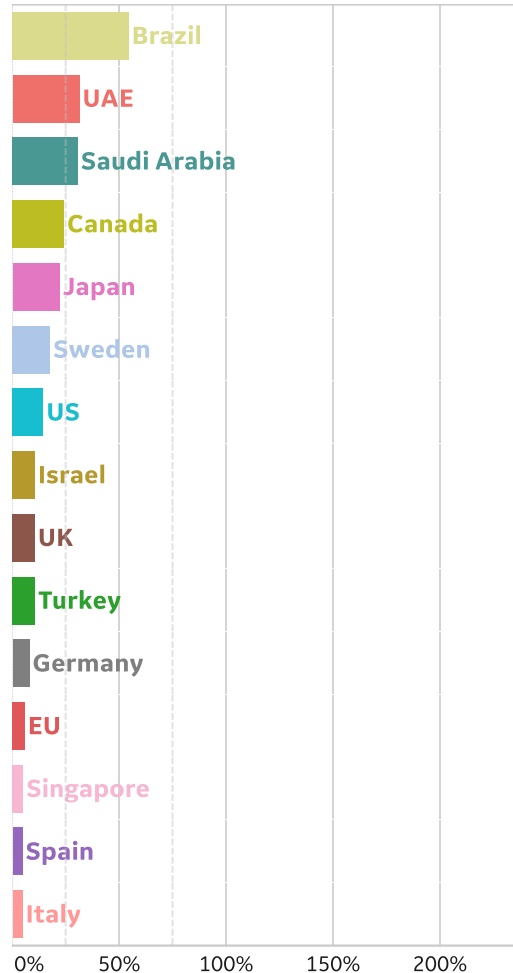
Confirmed Cases



Reported Recoveries



Reported Deaths





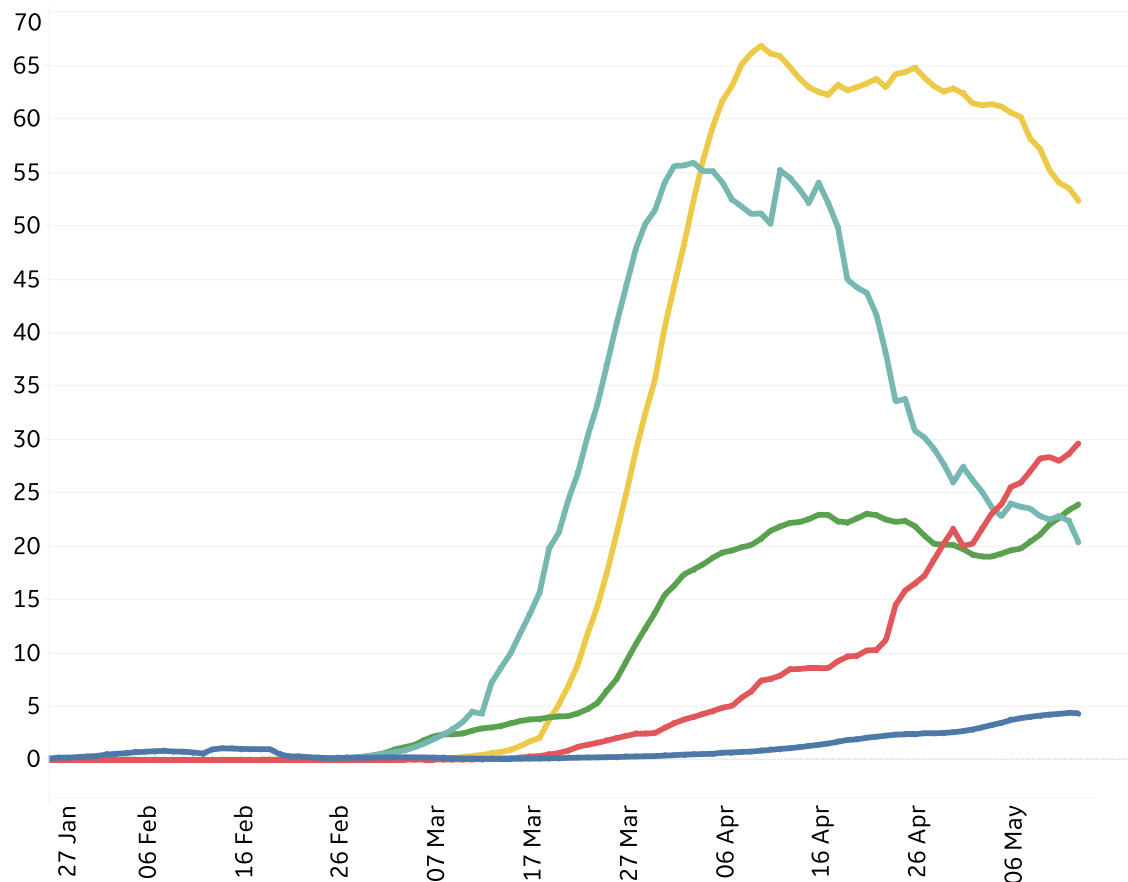
New Confirmed Cases & New Deaths



Key **North America** **Europe** **Middle East** **Central/South America** **Asia**

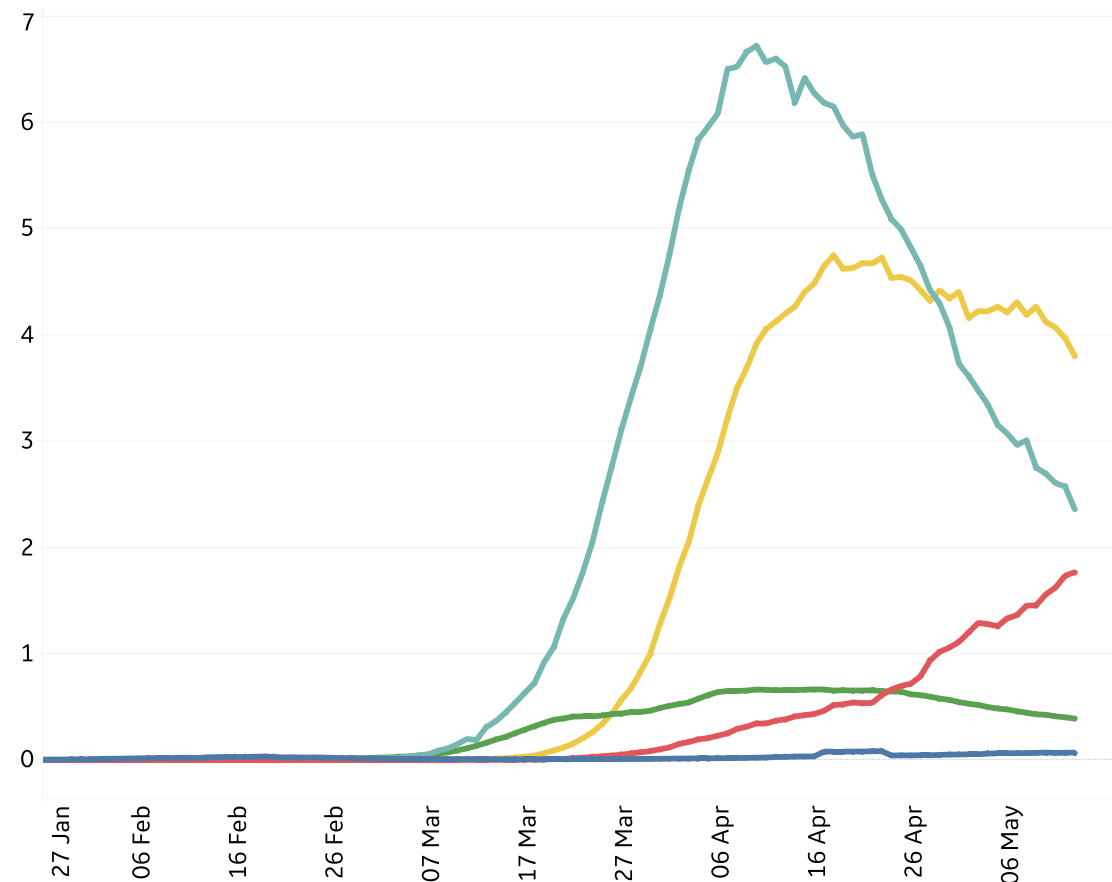
New Confirmed Cases / 1M

7-day rolling average



New Deaths / 1M

7-day rolling average

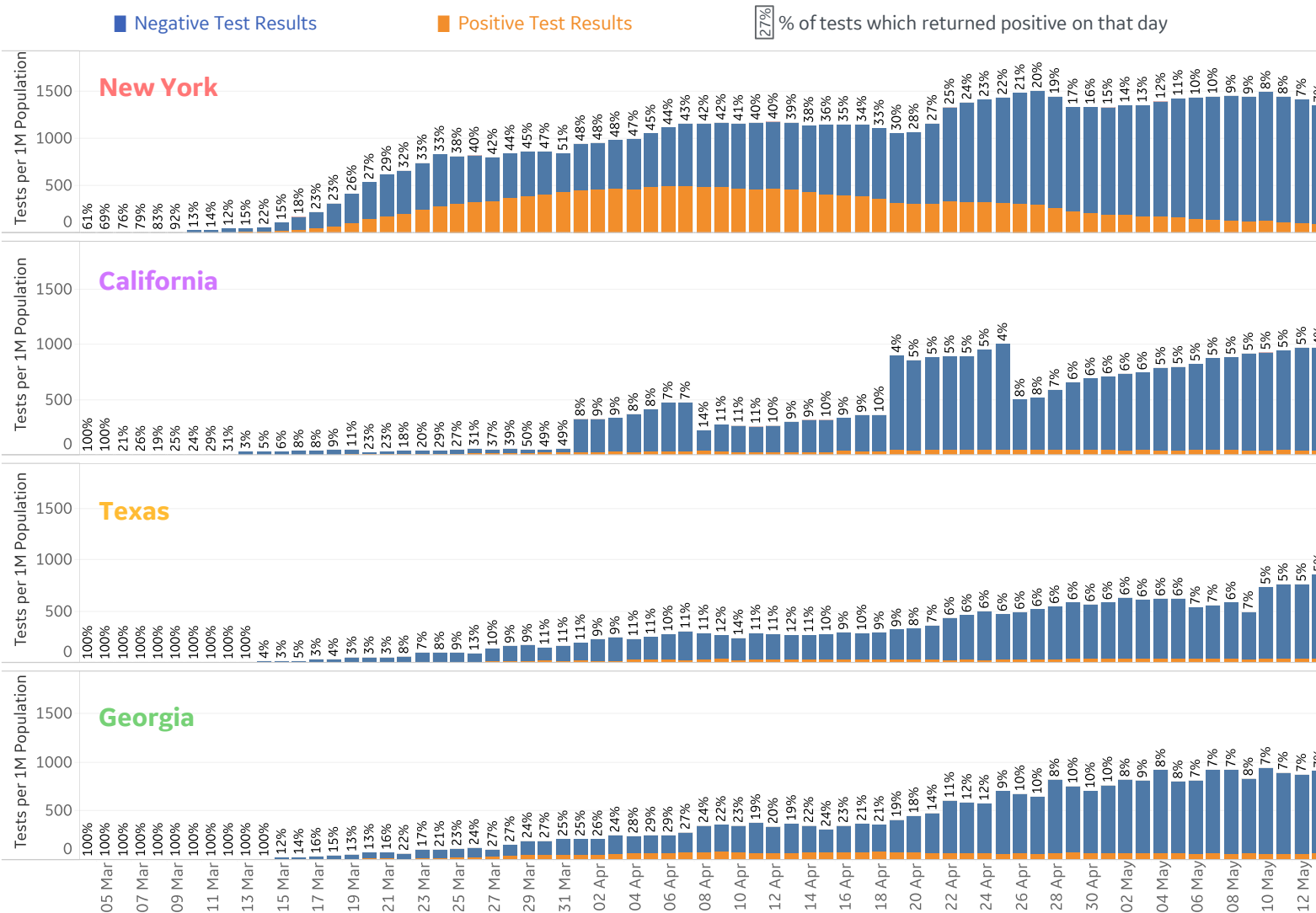




COVID Testing: US States

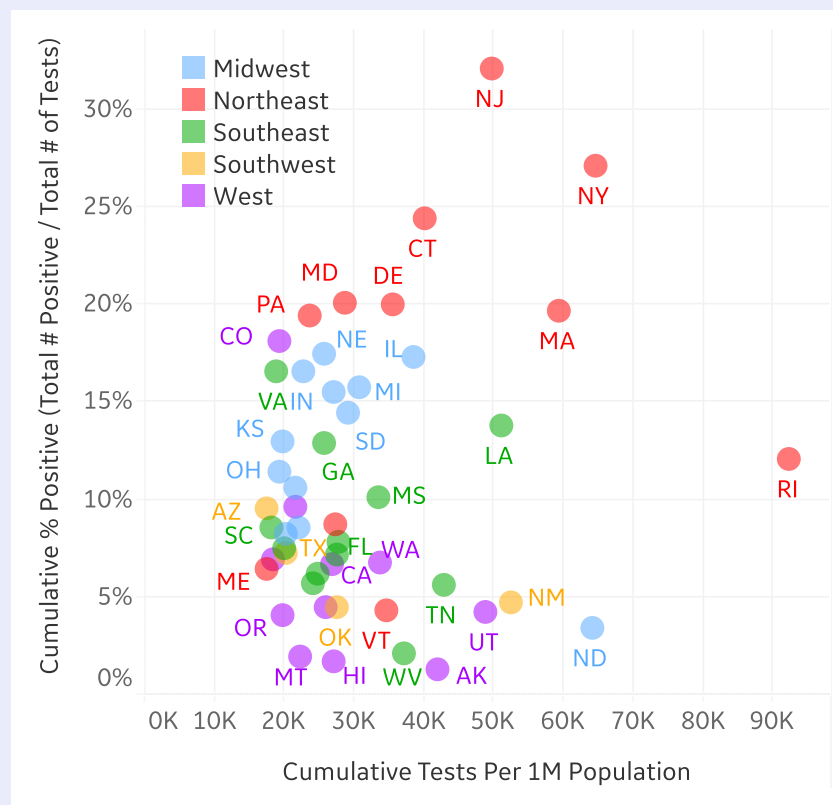


Test Volume and Results by Day



Cumulative Testing

Since 28 Feb 2020



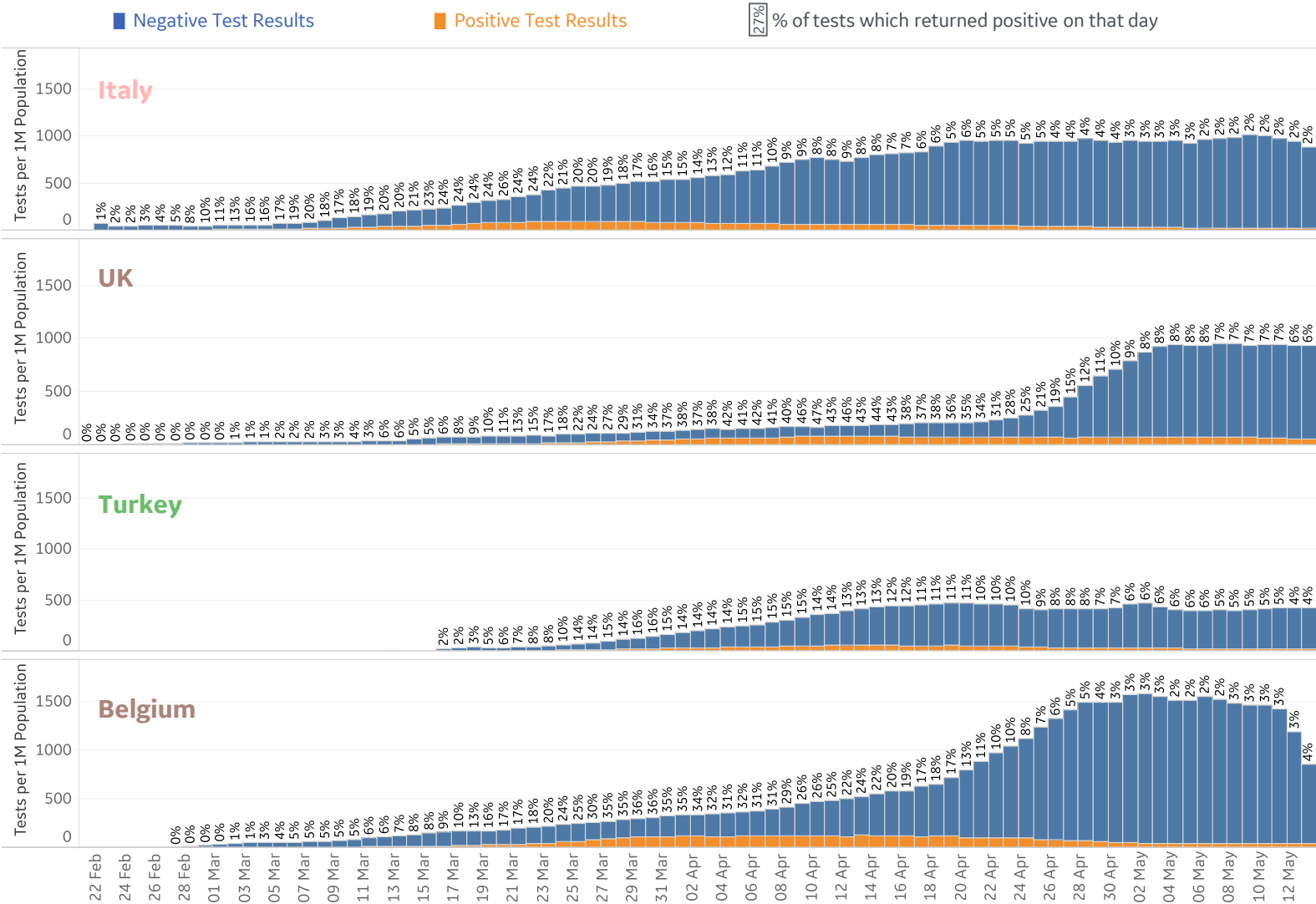
Note: 7-day moving averages used to reduce fluctuations due to reporting.



COVID Testing: International

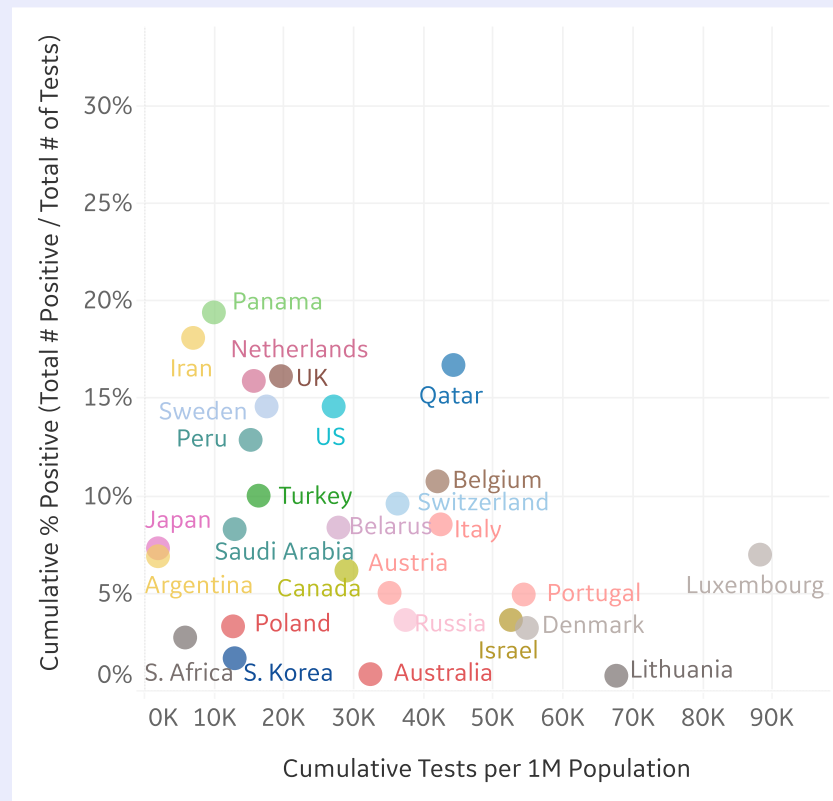


Test Volume and Results by Day



Cumulative Testing

Since Jan 2020



Note: 7-day moving averages used to reduce fluctuations due to reporting.



Per 1M in Region

	Today	Change
Active Cases	817	-0.4%
Confirmed	20 new	+1%
Deaths	2 new	+1%
Recovered	22 new	+3%

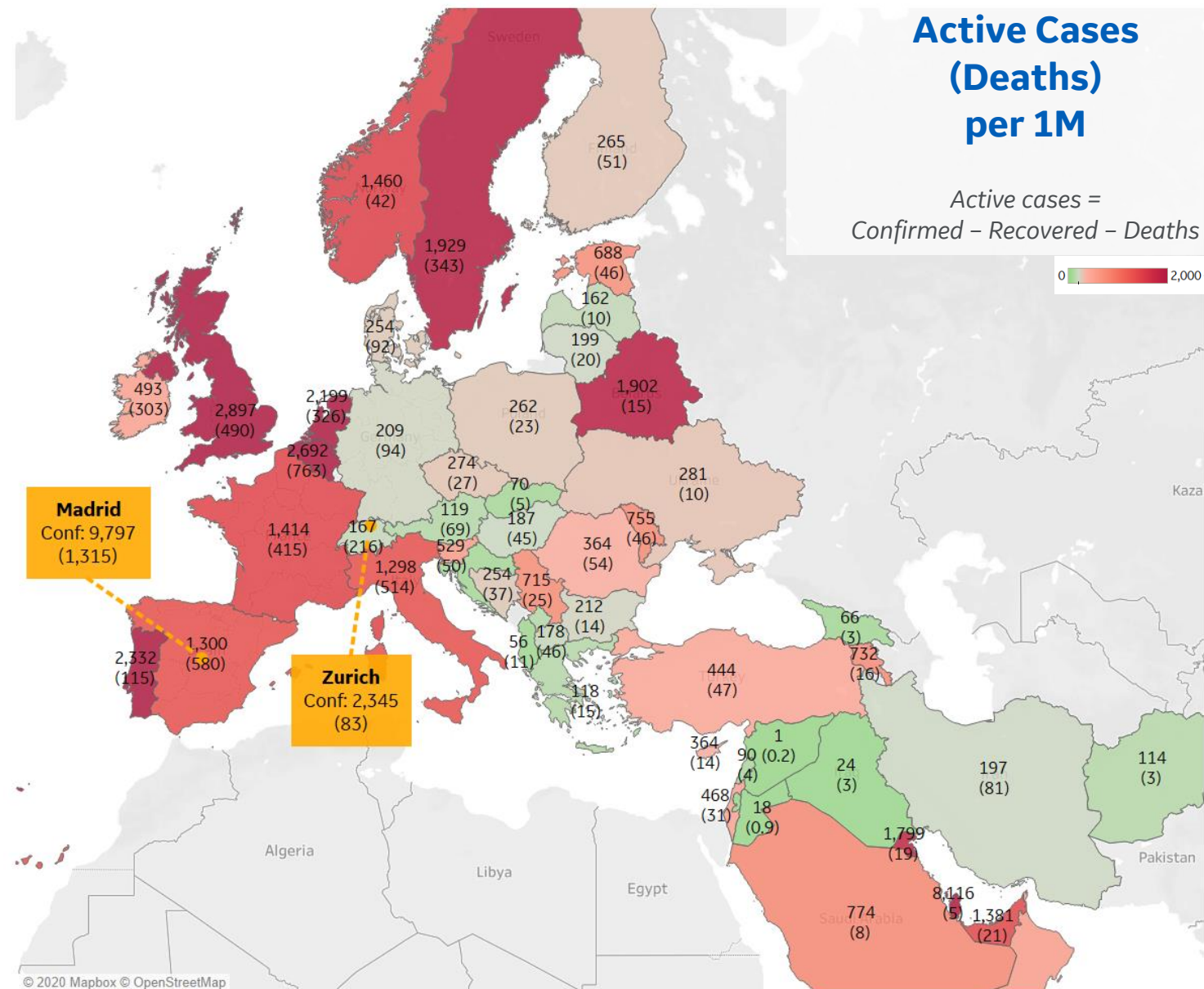
Most Active Cases per 1M

Qatar	8,116
UK	2,897
Belgium	2,692
Portugal	2,332
Netherlands	2,199
Bahrain	2,116
Sweden	1,929
Belarus	1,902
Kuwait	1,799
Norway	1,460

* Excludes regions with population < 1M

Active Cases (Deaths) per 1M

Active cases =
Confirmed - Recovered - Deaths





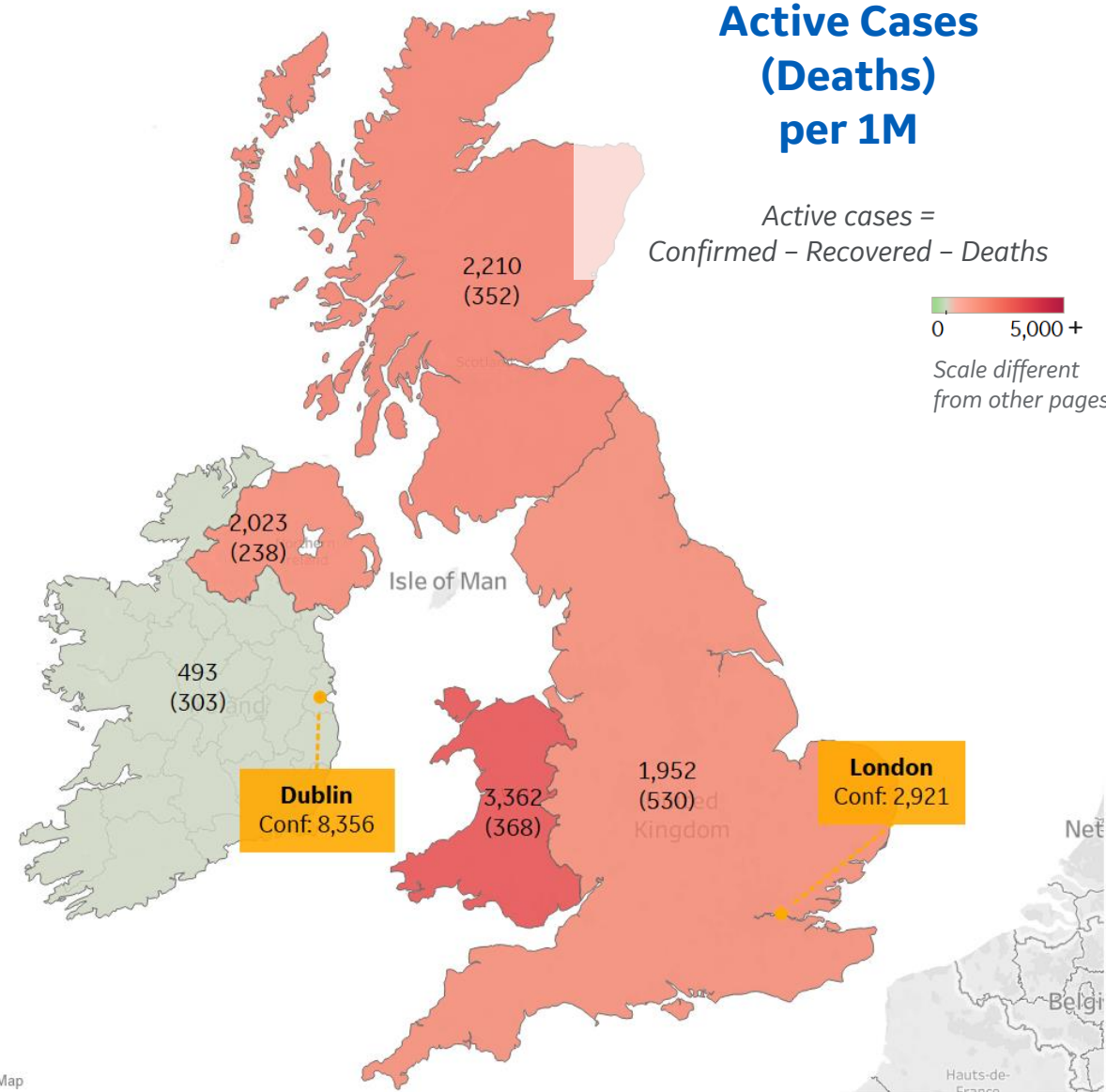
Per 1M in Region

	Today	Change
Active Cases	2,734	+0.3%
Confirmed	47 new	+1%
Deaths	7 new	+1%
Recovered	33 new	+13%

Most Active Cases per 1M

Wales	3,362
Scotland	2,210
Northern Ireland	2,023
England	1,952
Ireland	493

Active Cases (Deaths) per 1M



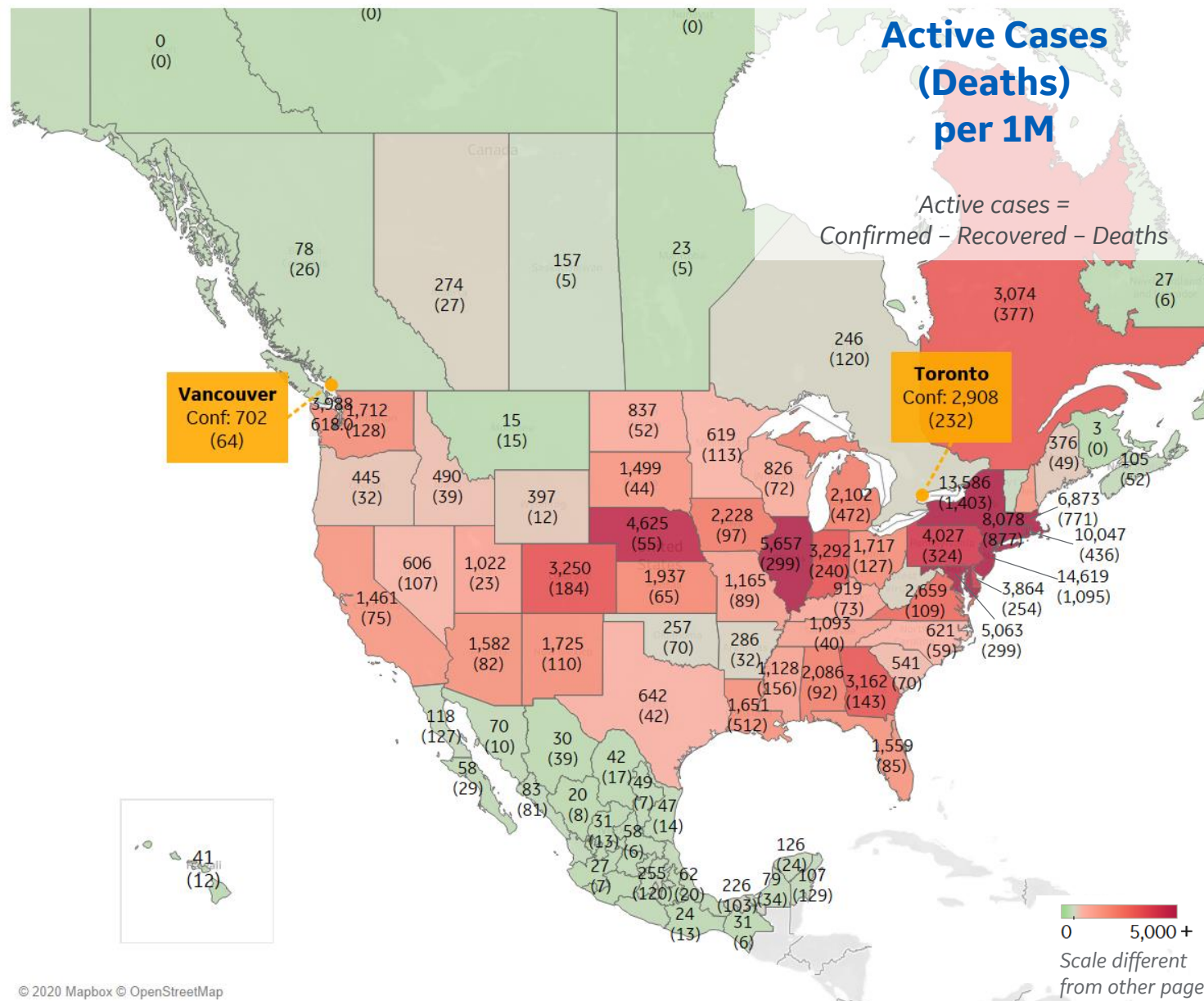


Per 1M in Region

	Today	Change
Active Cases	2,220	+1%
Confirmed	48 new	+2%
Deaths	4 new	+2%
Recovered	31 new	+5%

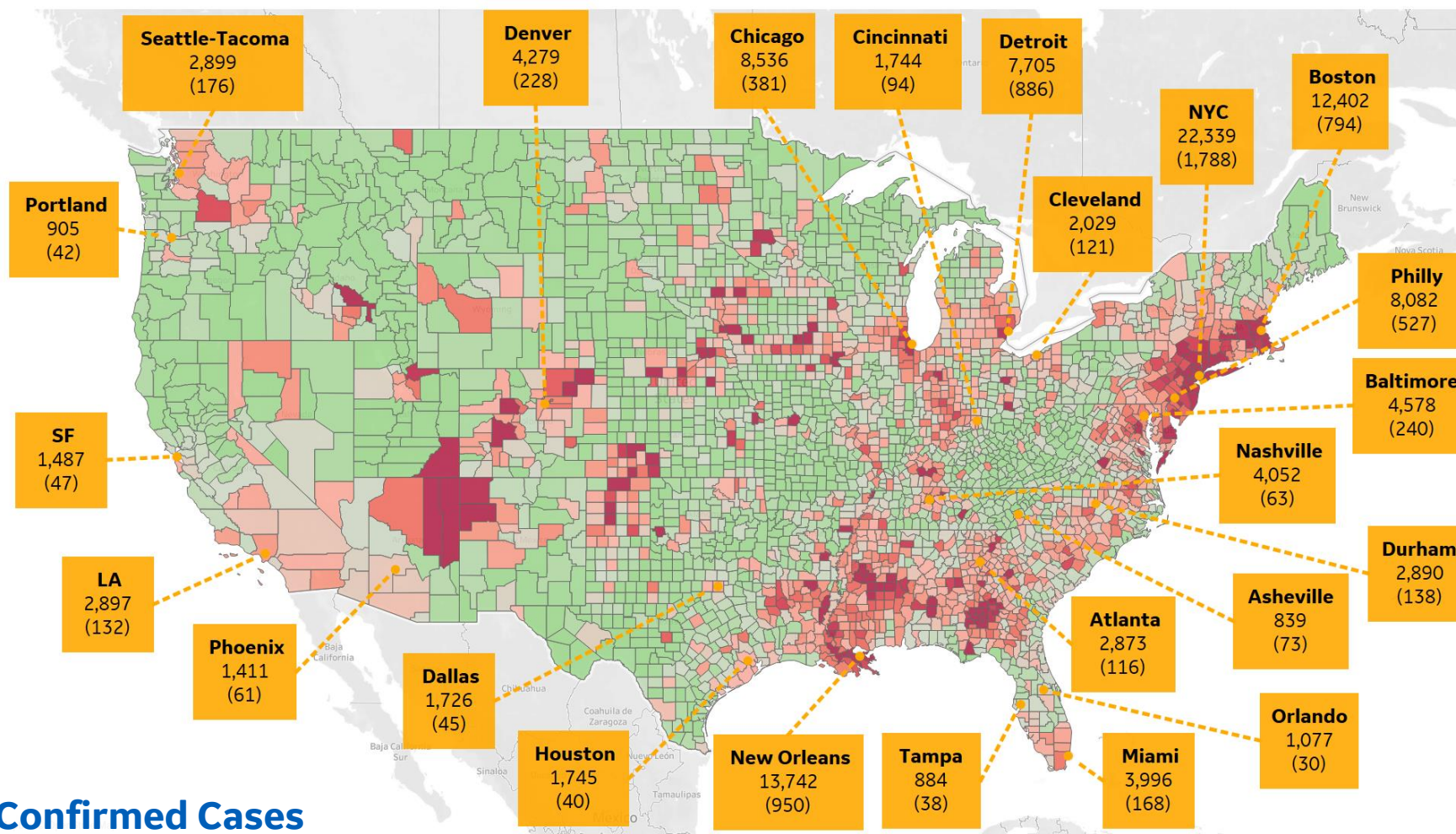
Most Active Cases per 1M

New Jersey	14,619
New York	13,586
Rhode Island	10,047
Connecticut	8,078
DC	7,510
Massachusetts	6,873
Illinois	5,657
Maryland	5,063
Nebraska	4,625
Pennsylvania	4,027

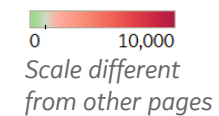




US by County & Metro, Total to Date



Each box reports data for the Metropolitan Statistical Area of the major city listed



Top 10 Northeast Counties

Confirmed Cases per 1M

Rockland County, NY	37,479
Westchester County, NY	31,520
Passaic County, NJ	27,681
Nassau County, NY	27,572
Hudson County, NJ	24,616
Union County, NJ	24,452
Suffolk County, NY	24,162
Orange County, NY	23,996
New York City*	21,447
Essex County, NJ	18,780

Top 10 Other US Counties

Confirmed Cases per 1M

Orleans Parish, LA	16,942
Jefferson Parish, LA	15,142
Wayne County, MI	10,076
Cook County, IL	9,175
Prince George's County, MD	9,150
District of Columbia, DC	7,908
Marion County, IN	6,986
Lake County, IL	6,717
Macomb County, MI	6,711
Weld County, CO	6,180

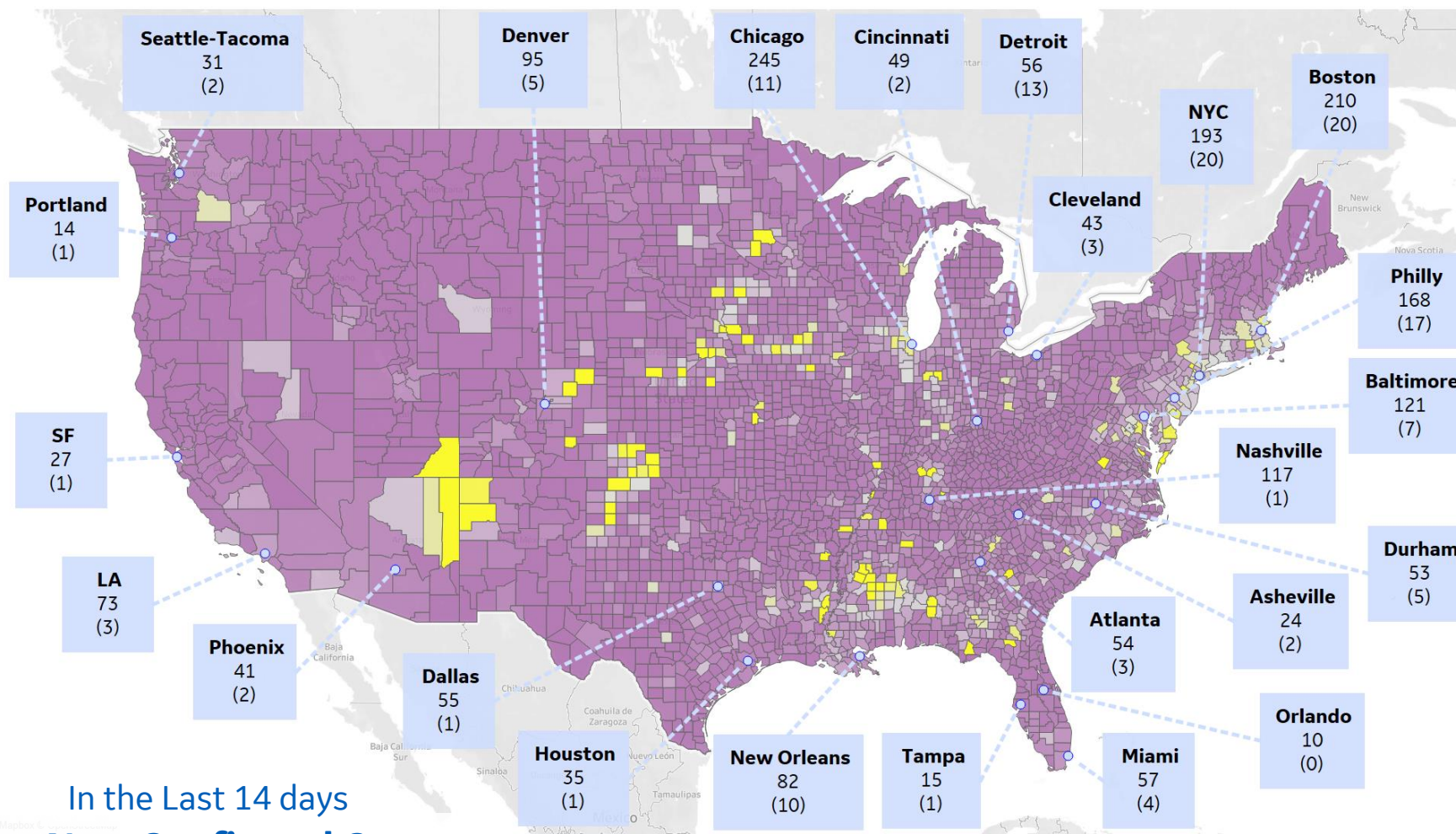
Note: Includes counties ≥ 250K population

* New York City counties aggregated into one reporting area

**Confirmed Cases
(Deaths)
per 1M**



US by County & Metro, New in Last 14 days



Top 10 Northeast Counties

Avg New Confirmed Cases / 1M

Passaic County, NJ	366
Mercer County, NJ	345
Hudson County, NJ	303
Essex County, MA	301
Suffolk County, MA	271
Worcester County, MA	253
Union County, NJ	247
Middlesex County, NJ	243
Camden County, NJ	242
Plymouth County, MA	236

Top 10 Other US Counties

Avg New Confirmed Cases / 1M

Prince George's County, MD	340
Kane County, IL	313
Cook County, IL	299
Brown County, WI	273
Prince William County, VA	251
District of Columbia, DC	251
Yakima County, WA	246
Lake County, IL	244
Polk County, IA	240
Montgomery County, MD	213

In the Last 14 days
Avg New Confirmed Cases
(Avg New Deaths)
per 1M

Each box reports data for the Metropolitan Statistical Area of the major city listed



Note: Includes counties ≥ 250K population
* New York City counties aggregated into one reporting area



Central & South America



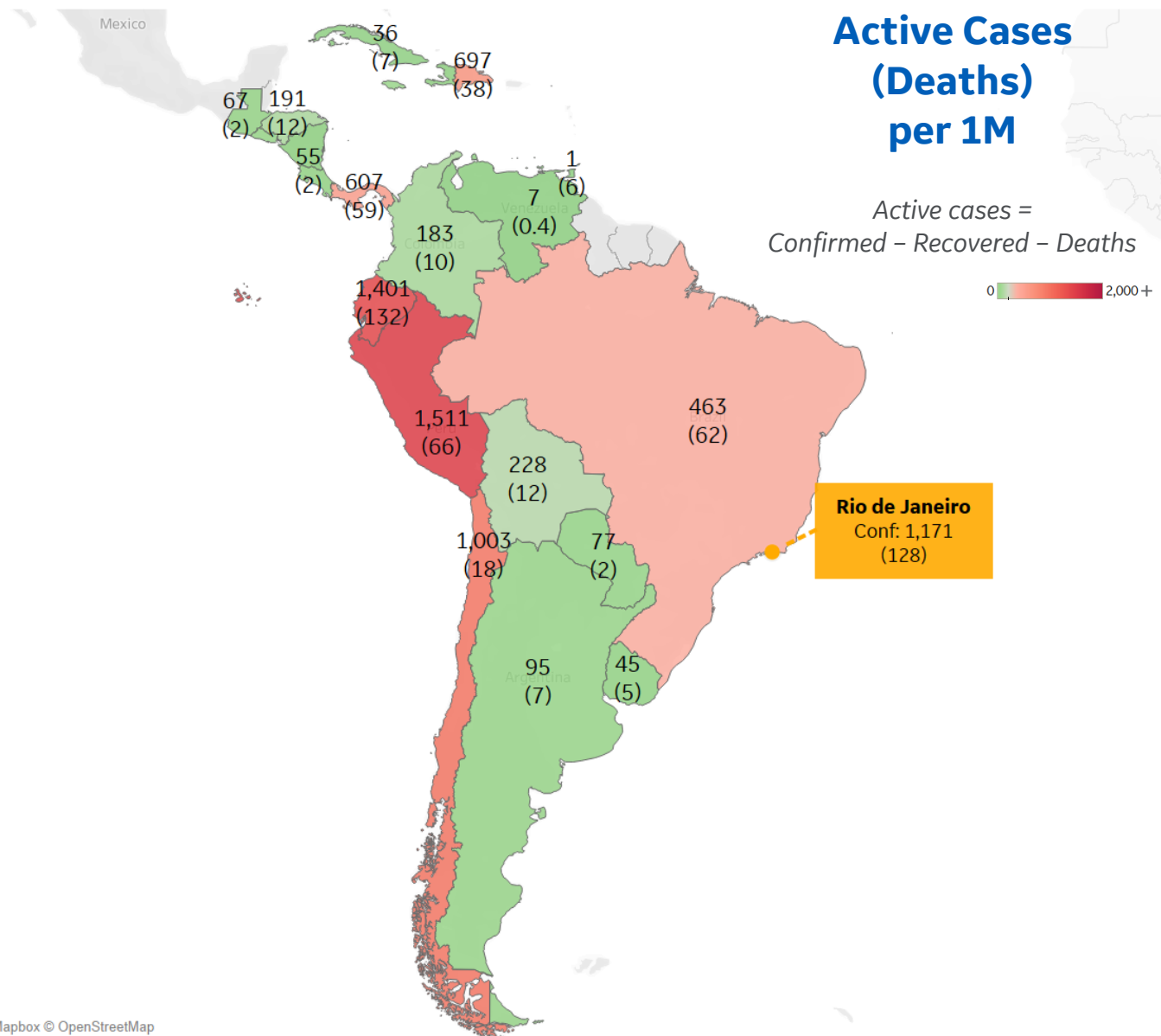
Per 1M in Region

	Today	Change
Active Cases	432	+5%
Confirmed	40 new	+6%
Deaths	2 new	+5%
Recovered	16 new	+6%

Most Active Cases per 1M

Peru	1,511
Ecuador	1,401
Chile	1,003
Dom. Rep.	697
Panama	607
Brazil	463
Bolivia	228
Honduras	191
Colombia	183
Jamaica	131

* Excludes regions with population < 1M





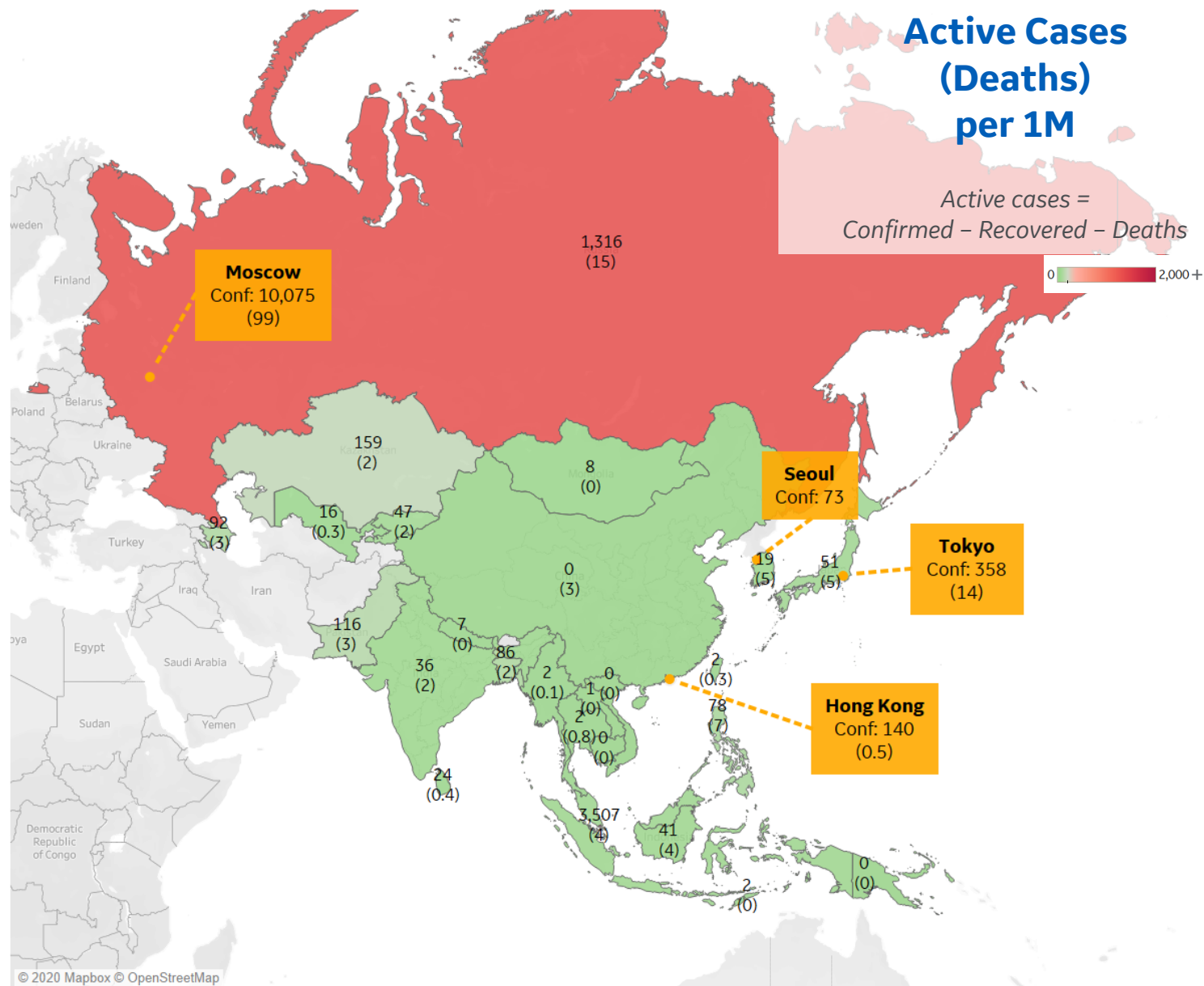
Per 1M in Region

	Today	Change
Active Cases	77	+3%
Confirmed	4 new	+3%
Deaths	0.1 new	+3%
Recovered	3 new	+7%

Most Active Cases per 1M

Singapore	3,507
Russia	1,316
Kazakhstan	159
Pakistan	116
Azerbaijan	92
Bangladesh	86
Philippines	78
Japan	51
Kyrgyzstan	47
Malaysia	43

* Excludes regions with population < 1M





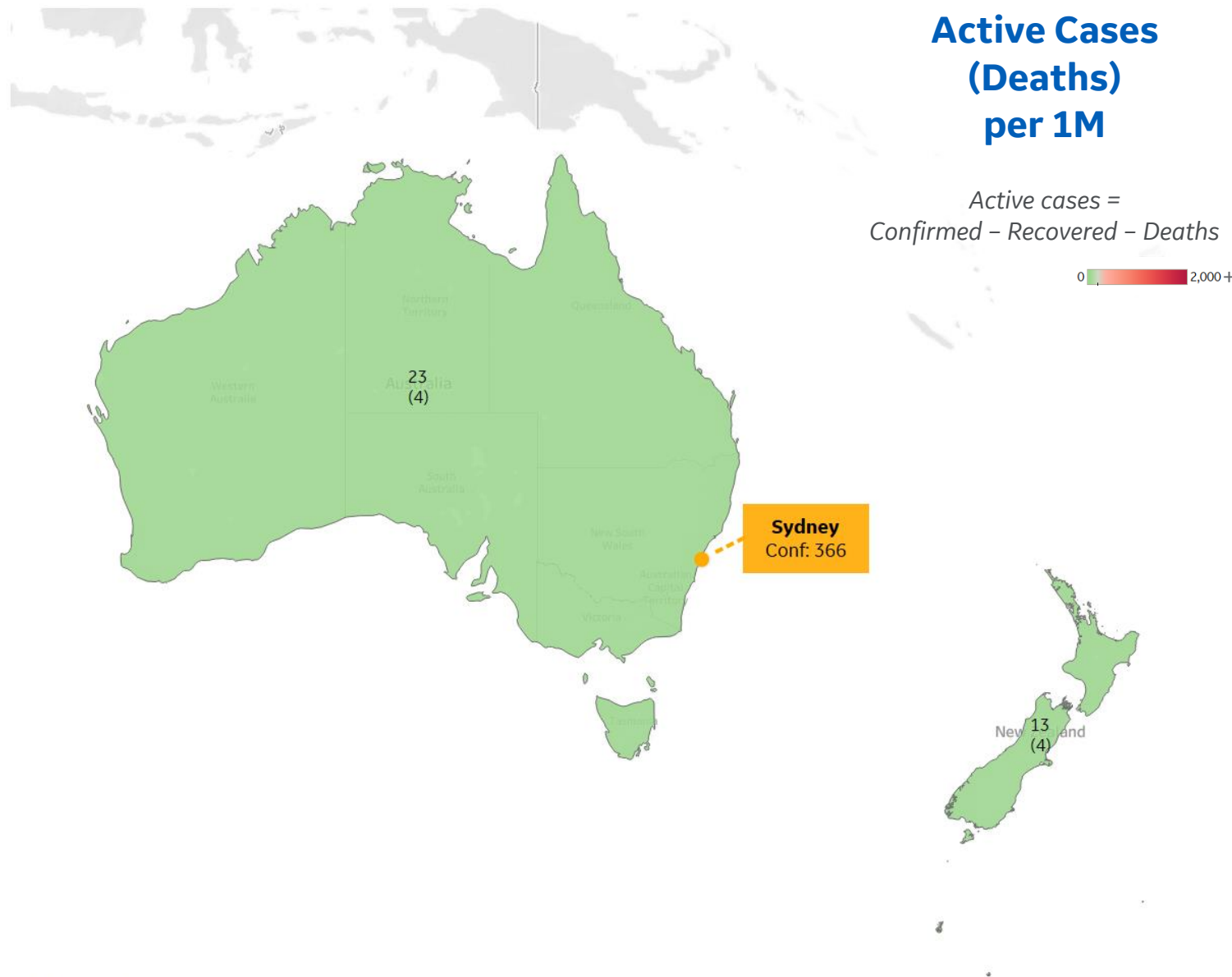
Per 1M in Region

	Today	Change
Active Cases	21	-4%
Confirmed	0.3 new	+0.1%
Deaths	0 new	+0%
Recovered	1 new	+0.4%

Most Active Cases per 1M

Australia	23
New Zealand	13

* Excludes regions with population < 1M





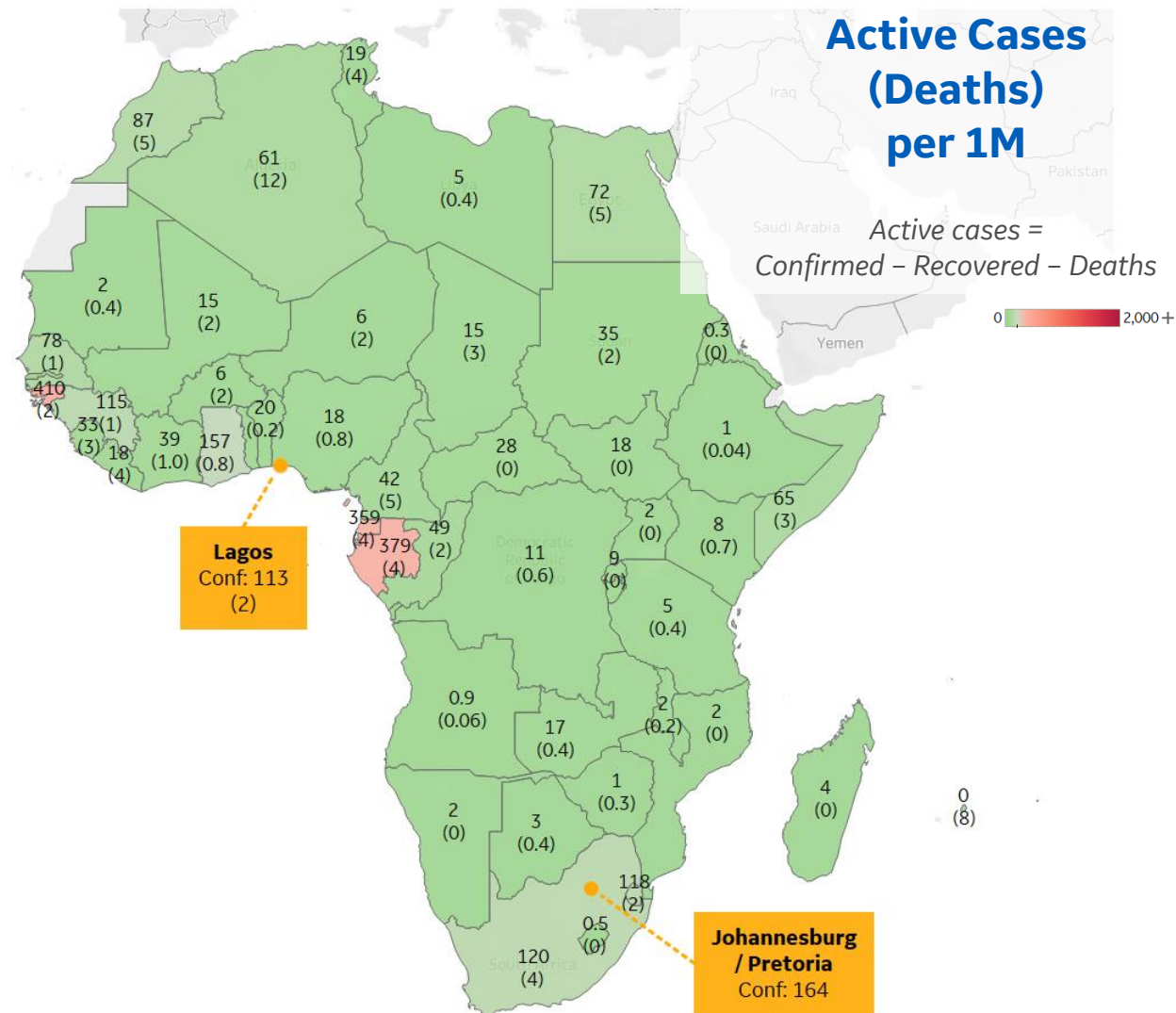
Per 1M in Region

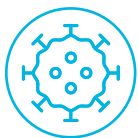
	Today	Change
Active Cases	33	+4%
Confirmed	2 new	+4%
Deaths	0.1 new	+4%
Recovered	1 new	+6%

Most Active Cases per 1M

Guinea-Bissau	410
Gabon	379
Eq. Guinea	359
Ghana	157
South Africa	120
Eswatini	118
Guinea	115
Morocco	87
Senegal	78
Egypt	72

* Excludes regions with population < 1M





***Per 1M = Per 1 Million Population unless otherwise noted*

Johns Hopkins Coronavirus Resource Center:

<https://coronavirus.jhu.edu/map.html>

Worldometer Coronavirus Reporting:

<https://www.worldometers.info/coronavirus/>

Public Health England:

<https://www.gov.uk/government/publications/covid-19-track-coronavirus-cases>

US Department of Homeland Security, Homeland Infrastructure Foundation-Level Data:

<https://hifld-geoplatform.opendata.arcgis.com/datasets/hospitals>

City of New York, NYC Health:

<https://www1.nyc.gov/site/doh/covid/covid-19-data.page>

Chicago Coronavirus Latest Data:

<https://www.chicago.gov/city/en/sites/covid-19/home/latest-data.html>

National Health Commission of the PRC:

<http://www.nhc.gov.cn/xcs/yqtb/202003/bf66696029ba420098164607240074f8.shtml>

Korean Centers for Disease Control and Prevention:

http://www.cdc.go.kr/cdc_eng/

CDC, Severe Outcomes Among Patients with Coronavirus Disease 2019 (COVID-19):

<https://www.cdc.gov/mmwr/volumes/69/wr/mm6912e2.htm>

COVID-19 Information for Switzerland:

<https://www.corona-data.ch/>

WHO Europe, Surveillance Report:

<http://www.euro.who.int/en/health-topics/health-emergencies/coronavirus-covid-19/weekly-surveillance-report>

WHO Europe, Principles for Transition:

<http://www.euro.who.int/en/media-centre/sections/statements/2020/statement-transition-to-a-new-normal-during-the-covid-19-pandemic-must-be-guided-by-public-health-principles>

UK Office for National Statistics

<https://www.ons.gov.uk/peoplepopulationandcommunity/birthsdeathsandmarriages/deaths/bulletins/deathsregisteredweeklyinenglandandwalesprovisional/weekending24april2020>

Public Health Authority of Sweden:

<https://www.folkhalsomyndigheten.se/smittykydd-beredskap/utbrott/aktuella-utbrott/covid-19/bekraftade-fall-i-sverige>

National Public Health Agency of France:

<https://www.santepubliquefrance.fr/regions/ile-de-france/documents/bulletin-regional/2020/covid-19-point-epidemiologique-en-ile-de-france-du-23-avril-2020>

Italian Ministry of Health:

http://www.salute.gov.it/portale/nuovocoronavirus/dettaglioContenutiNuovoCoronavirus.jsp?lingua=italiano&id=5351&a_rea=nuovoCoronavirus&menu=vuoto

Italian Department of Civil Protection, COVID Monitoring:

<http://opendatadpc.maps.arcgis.com/apps/opsdashboard/index.html#/b0c68bce2cce478eaac82fe38d4138b1>

New South Wales Government:

<https://www.health.nsw.gov.au/infectious/diseases/Pages/covid-19-latest.aspx>

Provincial Health Services Authority of Canada. BC Center for Disease Control:

<http://www.bccdc.ca/about/news-stories/stories/2020/information-on-novel-coronavirus>

Coronavirus Cases in Japan by Prefecture, Nippon Communications Foundation:

<https://www.nippon.com/en/japan-data/h00657/coronavirus-cases-in-japan-by-prefecture.html>

Government of Ireland:

<https://www.gov.ie/en/press-release/a8debf-statement-from-the-national-public-health-emergency-team-friday-apri/>

The Lancet Infectious Disease, Estimates of the severity of coronavirus disease 2019:

[https://www.thelancet.com/journals/laninf/article/PIIS1473-3099\(20\)30243-7/fulltext#seccestitle230](https://www.thelancet.com/journals/laninf/article/PIIS1473-3099(20)30243-7/fulltext#seccestitle230)

Ministry of Health of Portugal, Status Reports:

<https://covid19.min-saude.pt/relatorio-de-situacao/>

Coordination Center for Health Emergencies, Spain:

https://www.mscbs.gob.es/profesionales/saludPublica/ccayes/alertasActual/nCov-China/documentos/Actualizacion_78_COVID-19.pdf

Our World in Data, Testing:

<https://ourworldindata.org/coronavirus>

BBC News Services, Coronavirus Tracking:

<https://www.bbc.com/news/uk-51768274>

City of Toronto:

<https://www.toronto.ca/home/covid-19/media-room/covid-19-status-of-cases-in-toronto/>

General Secretariat for Health, Spain:

<https://www.mscbs.gob.es/profesionales/saludPublica/ccayes/alertasActual/nCov-China/home.htm>

CDC, National Vital Statistics Reports:

https://www.cdc.gov/nchs/data/nvsr/nvsr68/nvsr68_06-508.pdf

The COVID Tracking Project:

<https://covidtracking.com/data/>

CIA World Factbook:

<https://www.cia.gov/library/publications/resources/the-world-factbook/>

Timeline of COVID events in Mexico:

<https://www.gob.mx/salud/prensa/077-se-confirma-en-mexico-caso-importado-de-coronavirus-covid-19?idiom=es>

<https://www.jornada.com.mx/ultimas/politica/2020/03/18/fallece-victima-de-covid-19-en-el-iner-9638.html>

<https://www.milenio.com/politica/arquidiocesis-celebracion-semana-santa-puerta-cerrada>

<https://world-today-news.com/161-countries-support-mexicos-proposal-to-the-un-to-avoid-hoarding-inputs-against-covid-19/>

<https://www.informador.mx/mexico/Habilitan-Los-Pinos-como-albergue-para-medicos-y-enfermeras-20200504-0034.html>

Secretary of Health, Mexico:

<https://www.gob.mx/salud/en>